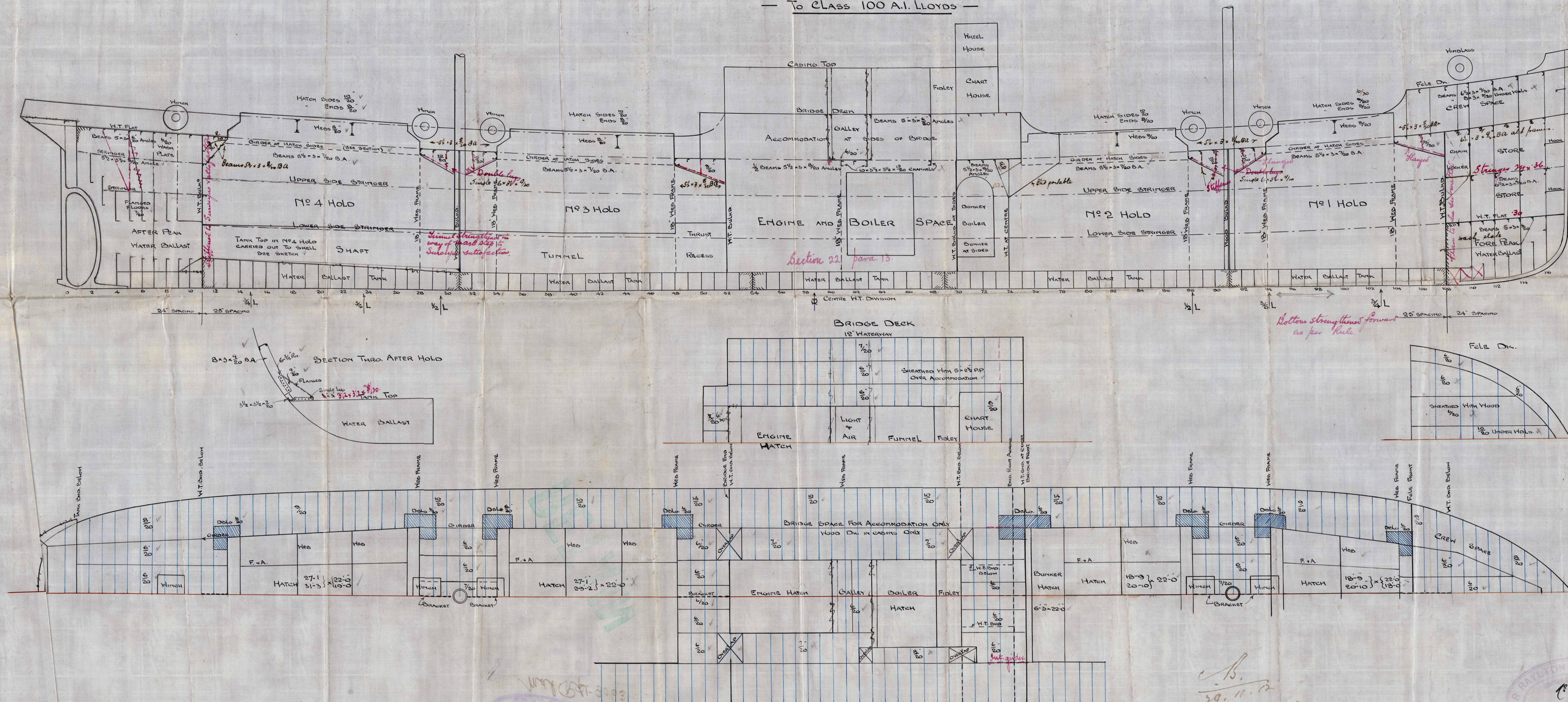


— S.S. N° 583 —  
— PROFILE AND DECK PLANS —

— 245'-0" × 36'-0" × 21'-0" M.L.D. —

—  $\frac{1}{8}'' = 1 \text{ FOOT}$  —

— To CLASS 100 A.I. LLOYDS —



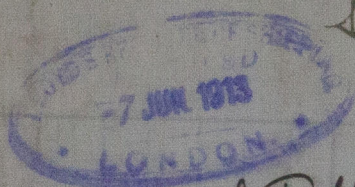


W499-0311

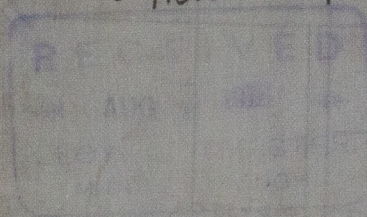
Sir Raylton Dixon & Co. Ltd.  
S. S. No 583

Amended Profile &  
Deck Plans.

L. Valegarth



Mat Rpt-8063



RECEIVED



© 2021

Lloyd's Register  
Foundation