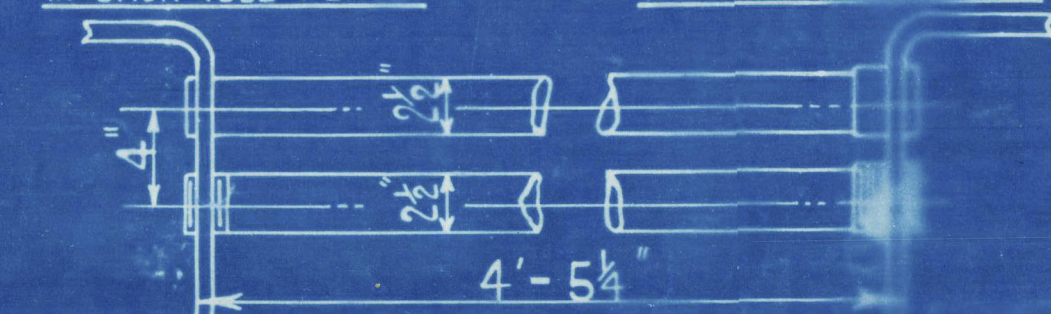


COCHRAN PATENT VERTICAL MULTITUBULAR BOILER.

PLAIN TUBE HOLES $2\frac{1}{2}$ " DIA.
IN BACK TUBE PLATE.



PLAIN TUBE HOLES $2\frac{1}{2}$ " DIA.
IN FRONT TUBE PLATE.



HORIZONTAL FLUE TUBES.

STAY TUBE HOLES SCREWED
 $2\frac{1}{2}$ " DIA. 11 THREADS PER INCH
IN BACK TUBE PLATE.

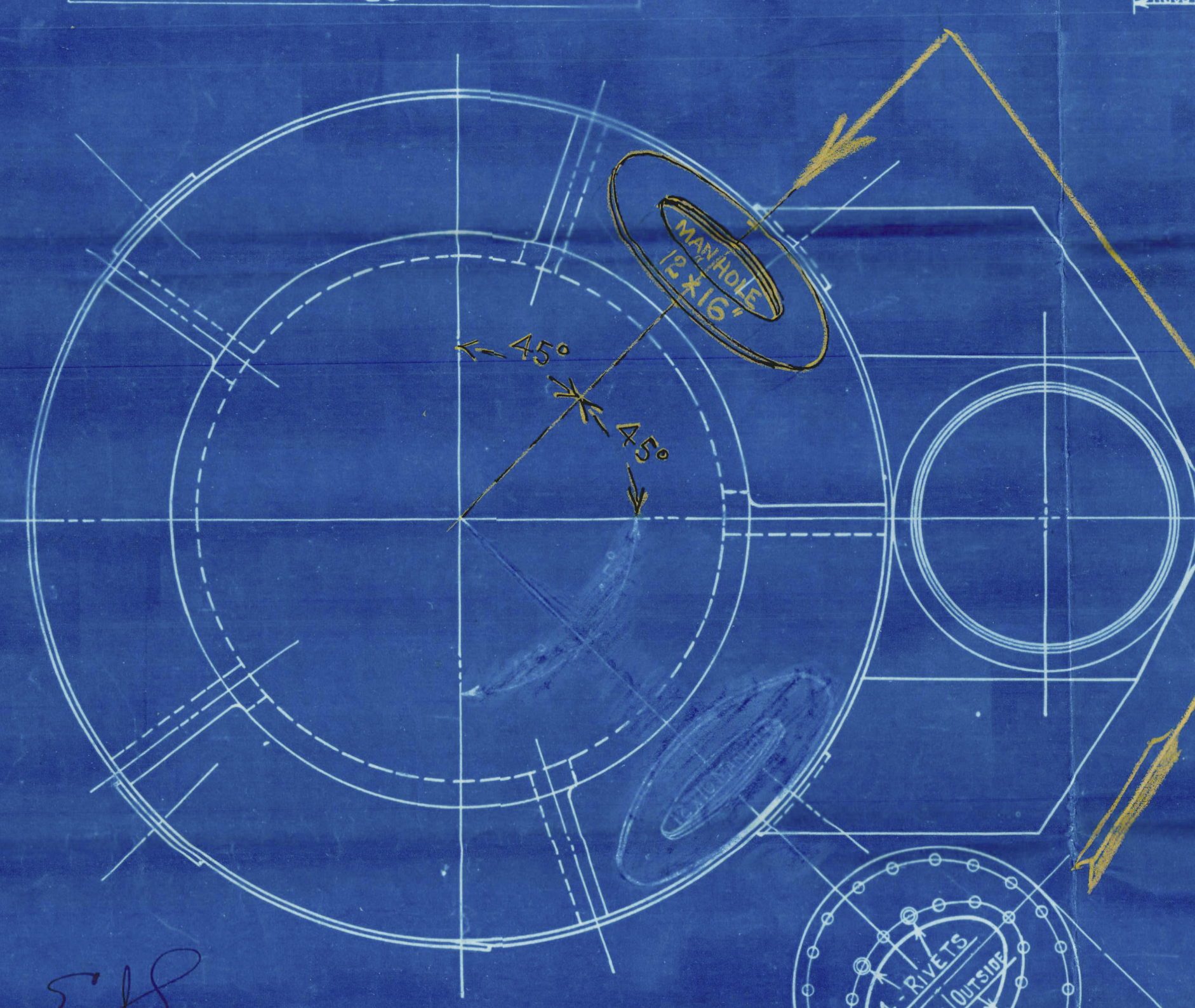
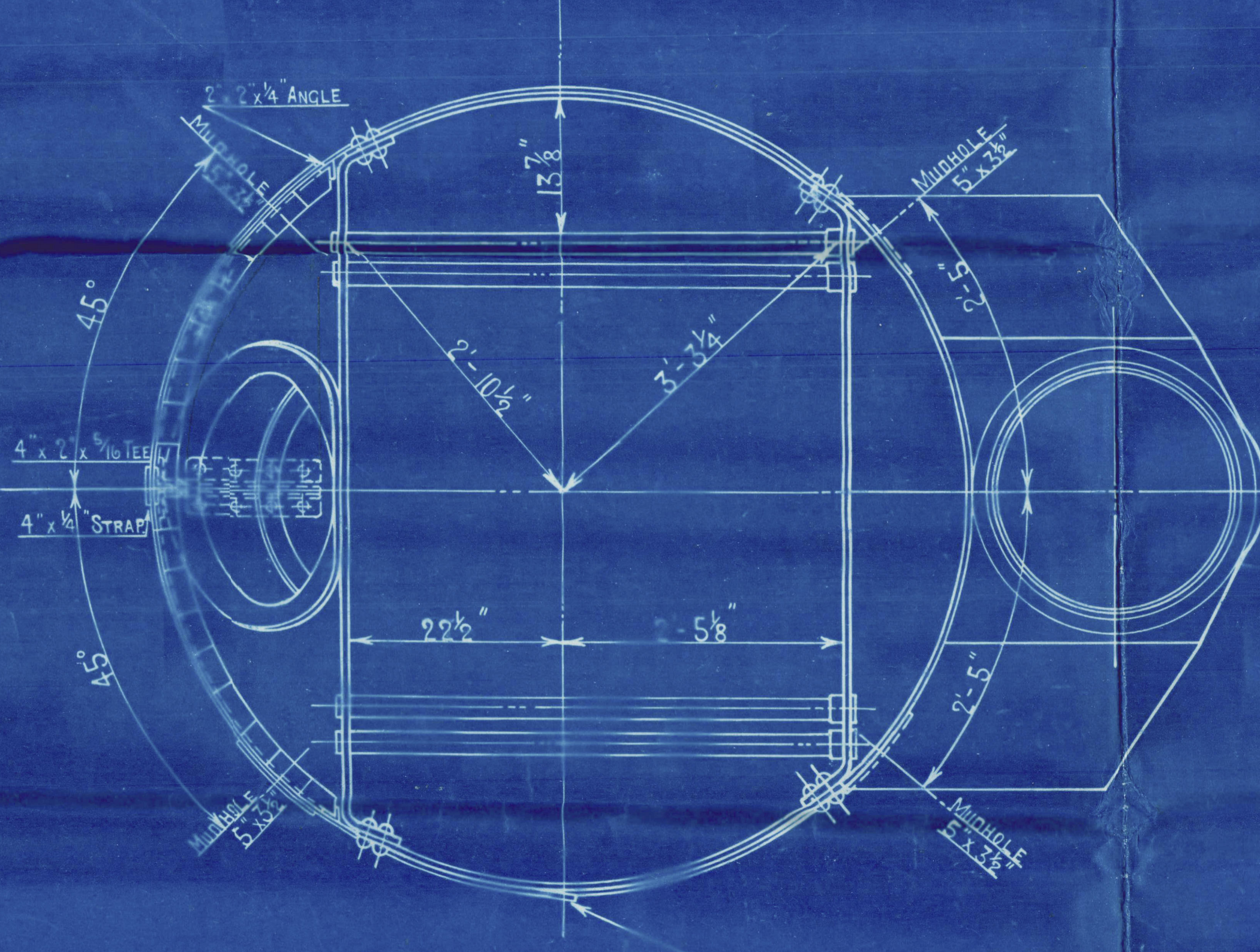
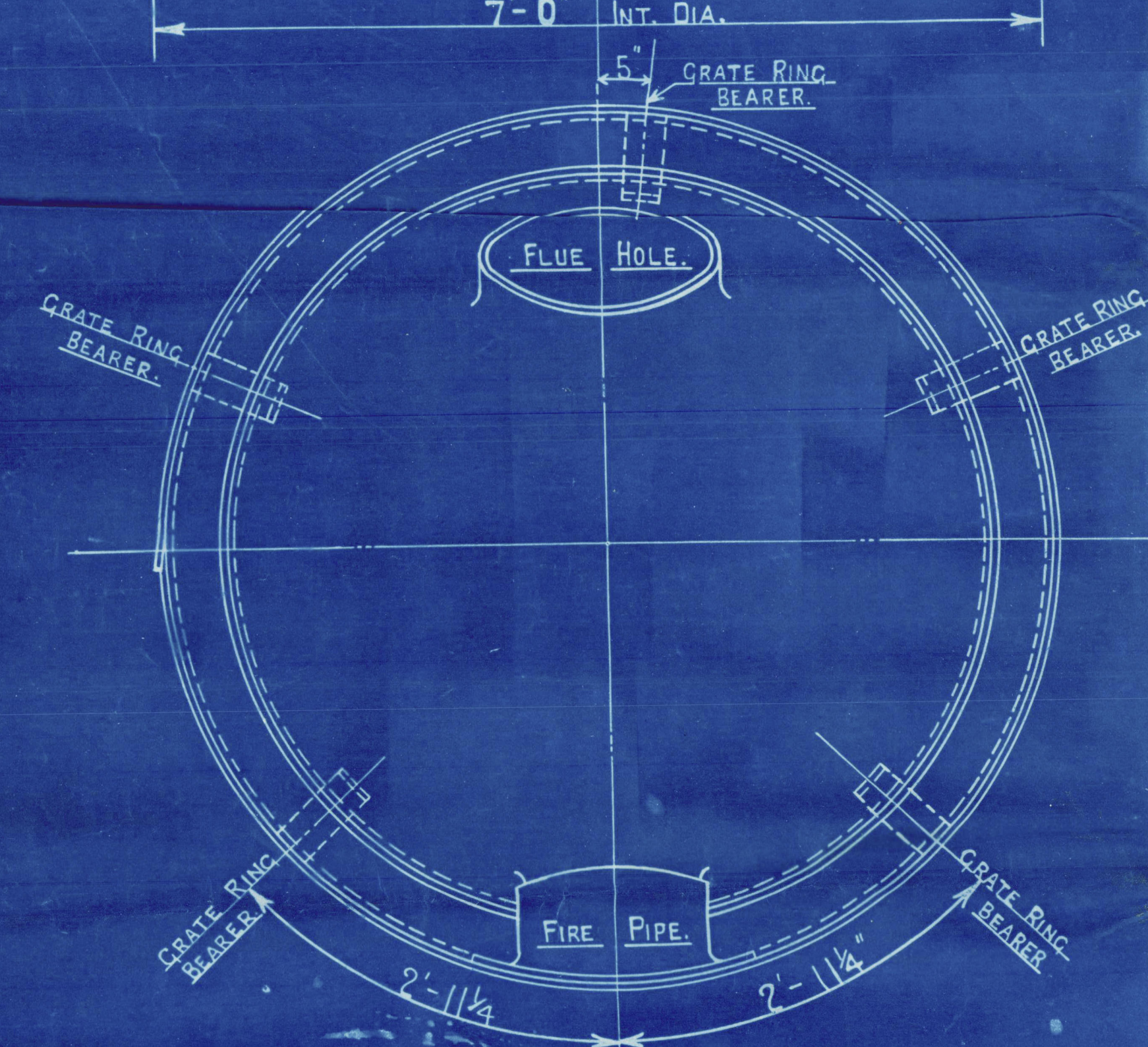
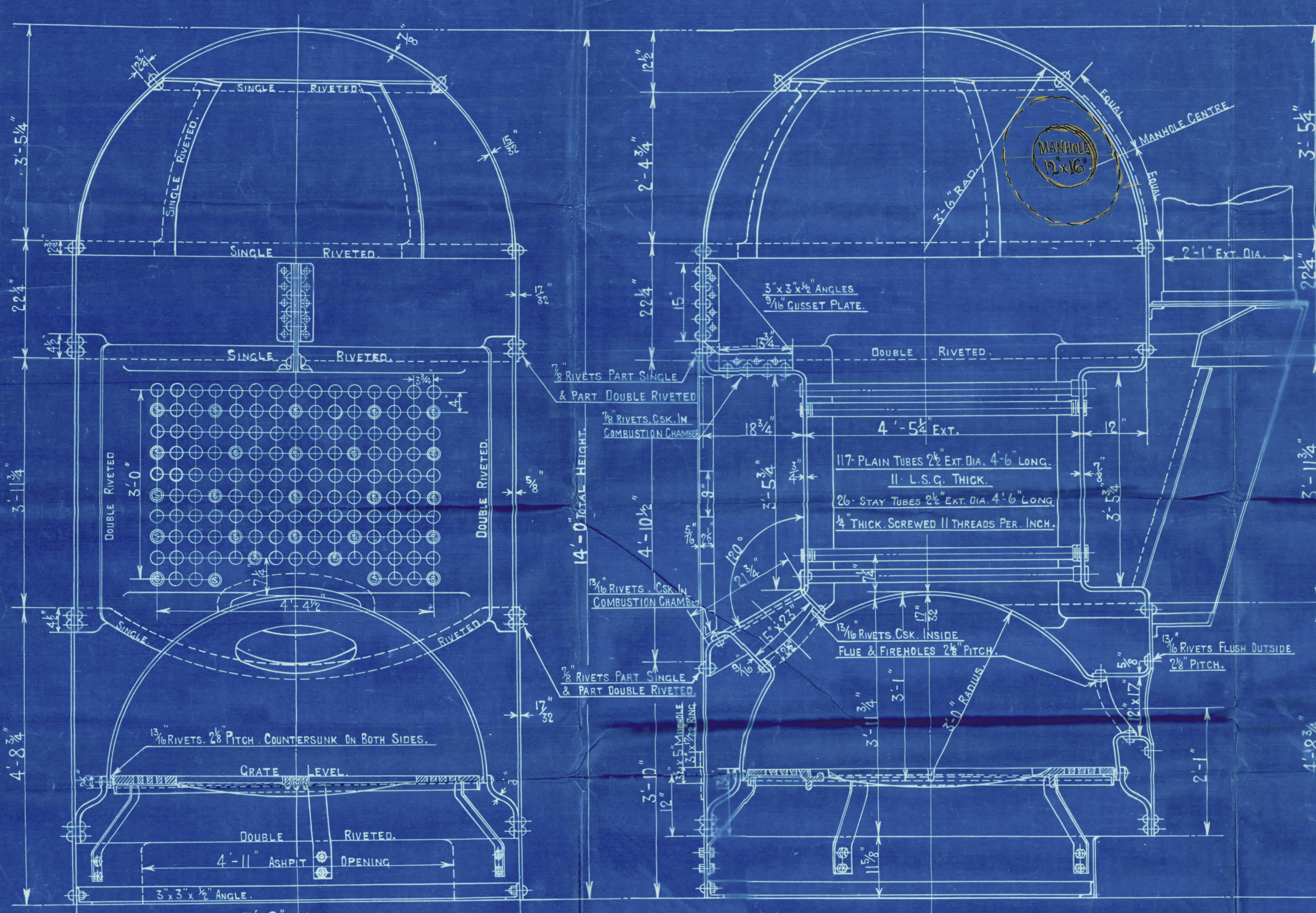
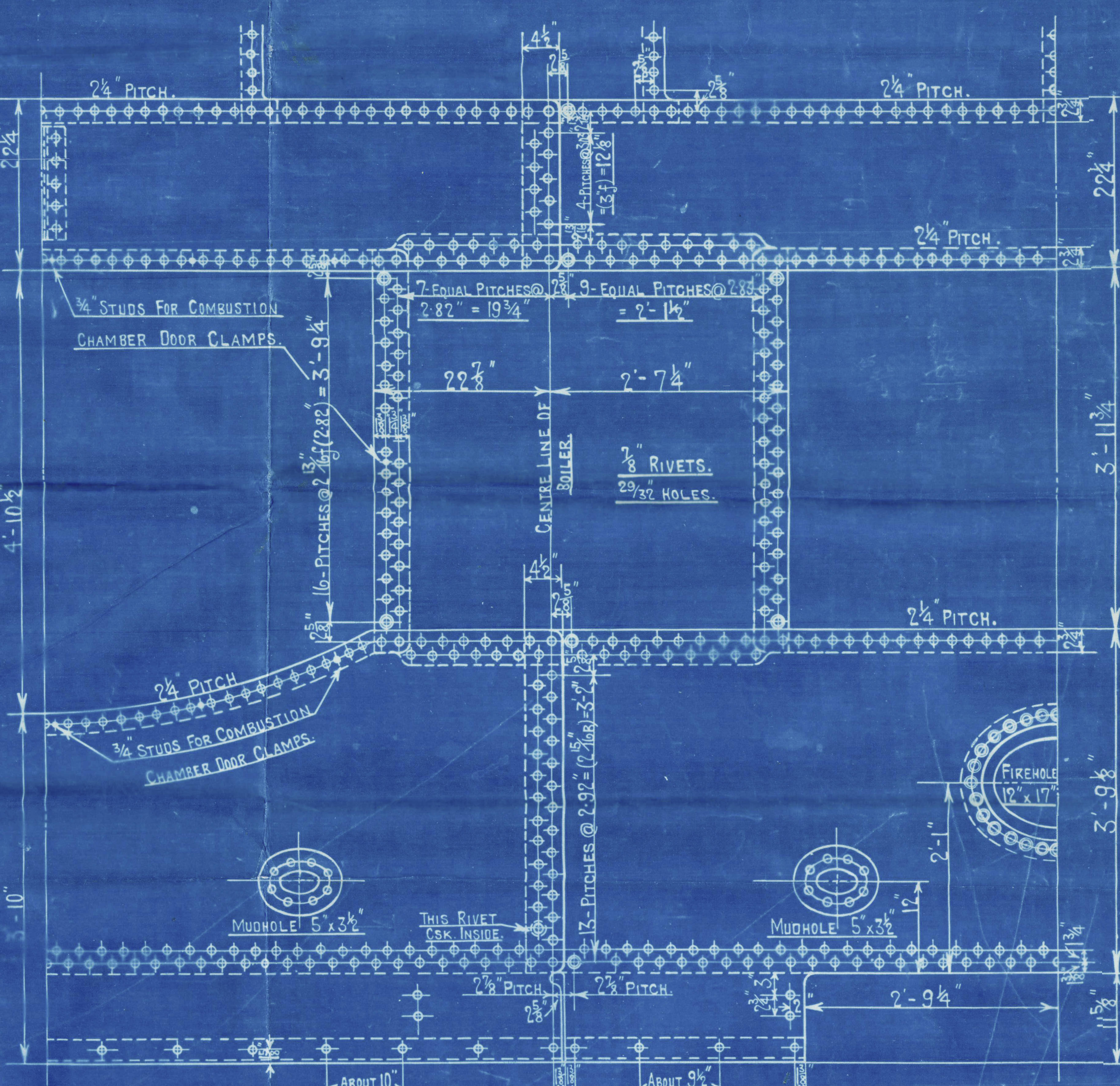
SCALE $1\frac{1}{2}$ " = 1 FOOT.

HEATING SURFACE.
TUBES 402 SQ. FT.
PLATE 97 SQ. FT.
TOTAL 500 SQ. FT.
GRATE AREA 20.75 SQ. FT.

PLATE	$2.32 \times 100 \times 100$	= 68.3 %
RIVETS	$2 \times 2.59 \times 100$	= 68.4 %
FRONT TUBE PLATE	$4 \times 2.59 \times 100$	= 35.1 %
BACK TUBE PLATE	$4 \times 2.59 \times 100$	= 37.5 %
SHELL	$20.5 (8.5 \times 2) \times 100$	= 108 LBS
FRONT TUBE PLATE	$20.5 (8.5 \times 2) \times 100$	= 102 LBS
BACK TUBE PLATE	$20.5 (8.5 \times 2) \times 100$	= 103.4 LBS
FURNACE	$1250 (8.5 \times 2)$	= 112.3 LBS
GRATE RING	516×14	= 100 LBS

PLATE	$2.32 \times 100 \times 100$	= 68.3 %
RIVETS	$2 \times 2.59 \times 100$	= 68.4 %
FRONT TUBE PLATE	$4 \times 2.59 \times 100$	= 35.1 %
BACK TUBE PLATE	$4 \times 2.59 \times 100$	= 37.5 %
SHELL	$20.5 (8.5 \times 2) \times 100$	= 108 LBS
FRONT TUBE PLATE	$20.5 (8.5 \times 2) \times 100$	= 102 LBS
BACK TUBE PLATE	$20.5 (8.5 \times 2) \times 100$	= 103.4 LBS
FURNACE	$1250 (8.5 \times 2)$	= 112.3 LBS
GRATE RING	516×14	= 100 LBS

PLATE	$2.32 \times 100 \times 100$	= 68.3 %
RIVETS	$2 \times 2.59 \times 100$	= 68.4 %
FRONT TUBE PLATE	$4 \times 2.59 \times 100$	= 35.1 %
BACK TUBE PLATE	$4 \times 2.59 \times 100$	= 37.5 %
SHELL	$20.5 (8.5 \times 2) \times 100$	= 108 LBS
FRONT TUBE PLATE	$20.5 (8.5 \times 2) \times 100$	= 102 LBS
BACK TUBE PLATE	$20.5 (8.5 \times 2) \times 100$	= 103.4 LBS
FURNACE	$1250 (8.5 \times 2)$	= 112.3 LBS
GRATE RING	516×14	= 100 LBS



COCHRAN & CO ANNAN LTD.
ENGINEERS & BOILERMAKERS
ANNAN, SCOTLAND.

PATENT BOILER N^o 6080
7'-0" x 14'-0" x 500# x 100 LBS.

SCALE 1 INCH TO 1 FOOT.

SIEMENS MARTIN MILD STEEL PLATES.

TENSILE TESTS

PLATES NOT EXPOSED TO FLAME OR FLANGED 28 TO 32 TONS.
PLATES EXPOSED TO FLAME OR FLANGED EXCEPT FURNACE CROWN 26 TO 30 TONS.
FURNACE CROWN 26 TO 29 TONS.

DRAWING N^o 6080
9565

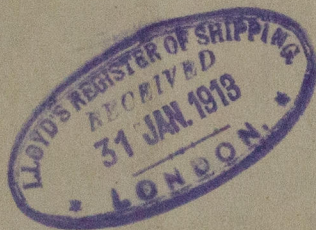
STANDARD
SURVEY - LLOYDS.

COCHRAN & CO., ANNAN, LD.

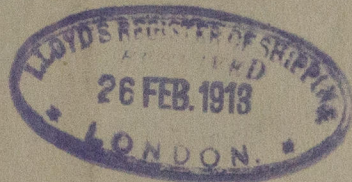
Boiler No. 6080.

Drawing No. 9565.

Sir Raylton Discon & Co. S.S. 583



GLASGOW REPORT No. 32386.



RETAIN



© 2021

Lloyd's Register
Foundation

W499-0308