

8.11.12

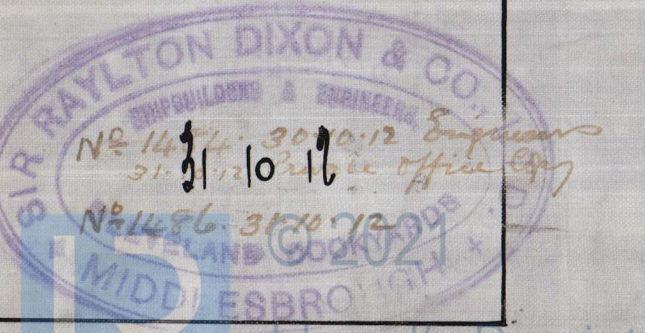
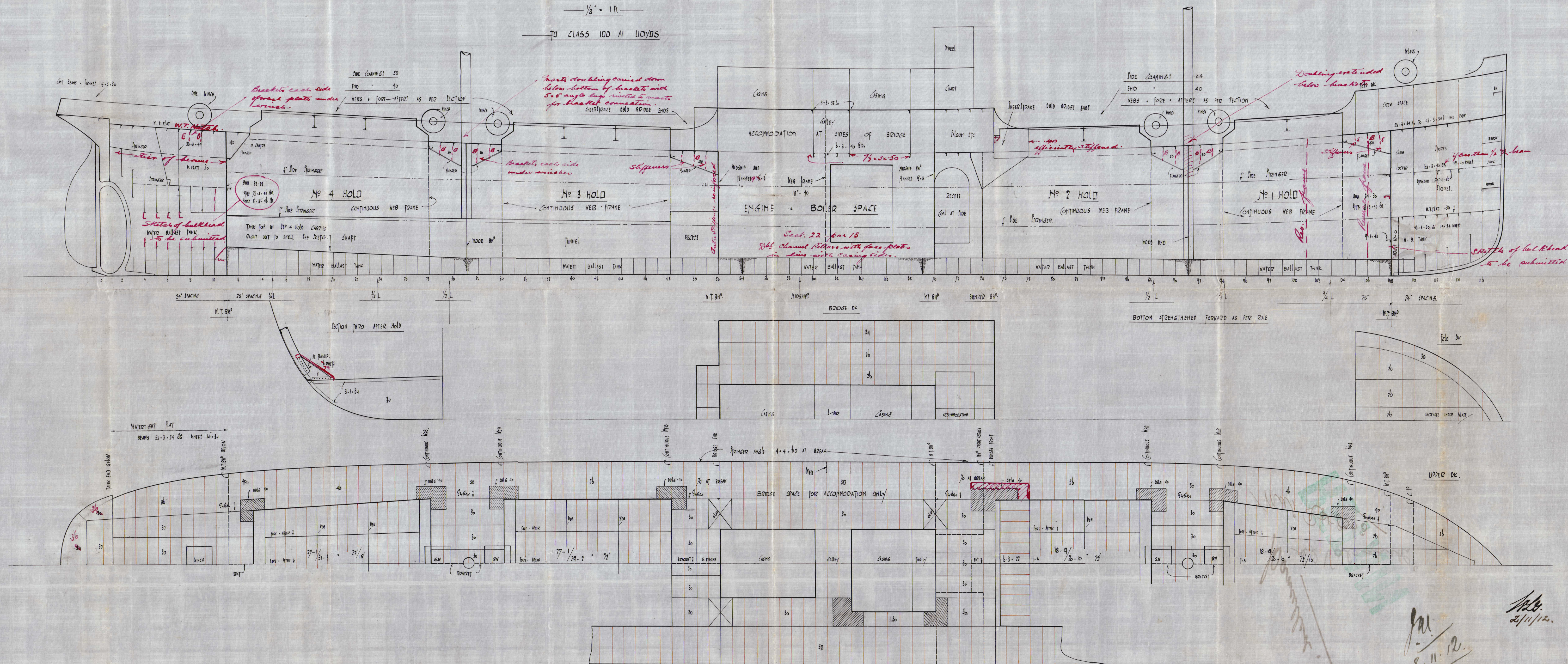
— No 583 S S —

— PROFILE + DECK PLANS —

— 245' x 36' x 21' MO —

— 1/8" = 1 ft —

— TO CLASS 100 AT LLOYDS —



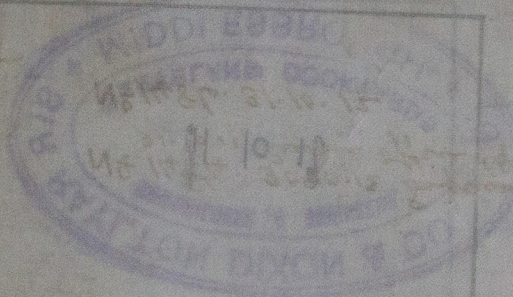
Lloyd's Register Foundation

W499-0307



Sir Raylton Dixon & Co. Ltd  
S.S. No 583.

Amended Profile and  
Deck Plans.



~~Cancelled~~

S.S. Valegarth  
Mdb. Rpt 8063



© 2021

Lloyd's Register  
Foundation