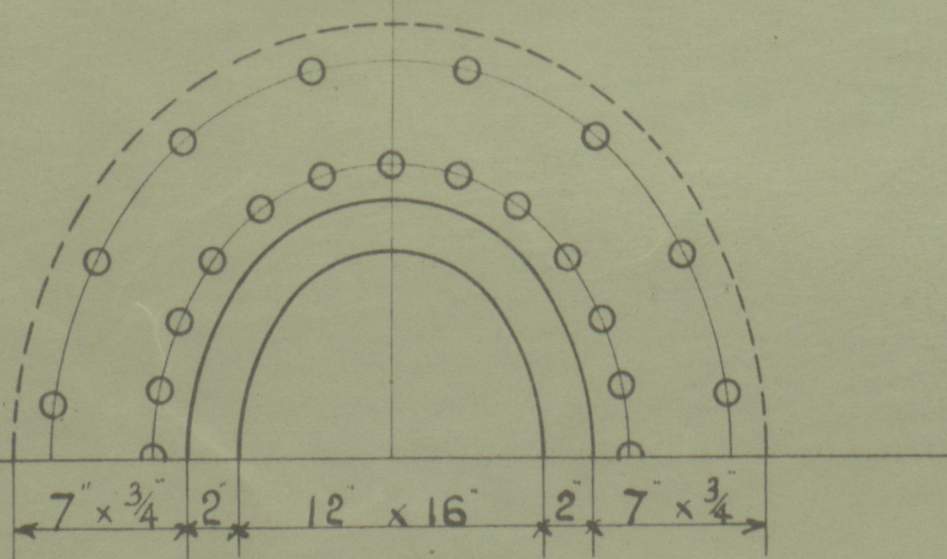


STEEL BOILER 11-0 DIA 11-0 LONG 100 LBS W.P. LLOYDS

5911

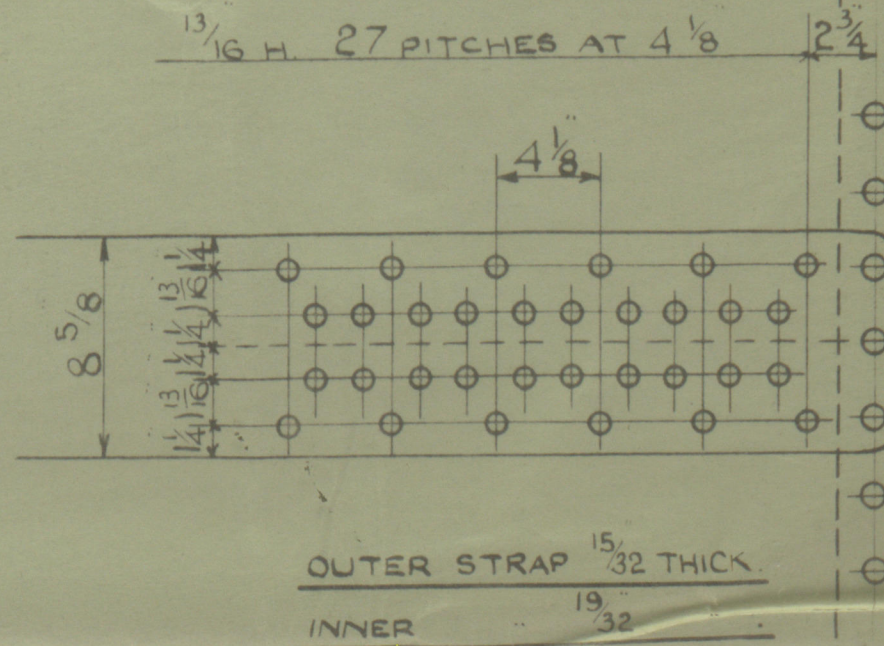
SPECIFICATION OF MATERIALS

SHELL, & STRAPS	29-33 TONS
GIRDERS, & MAINSTAYS	28-32 "
BALANCE OF PLATES, RIVETS, & SCREWSTAYS	26-30 "



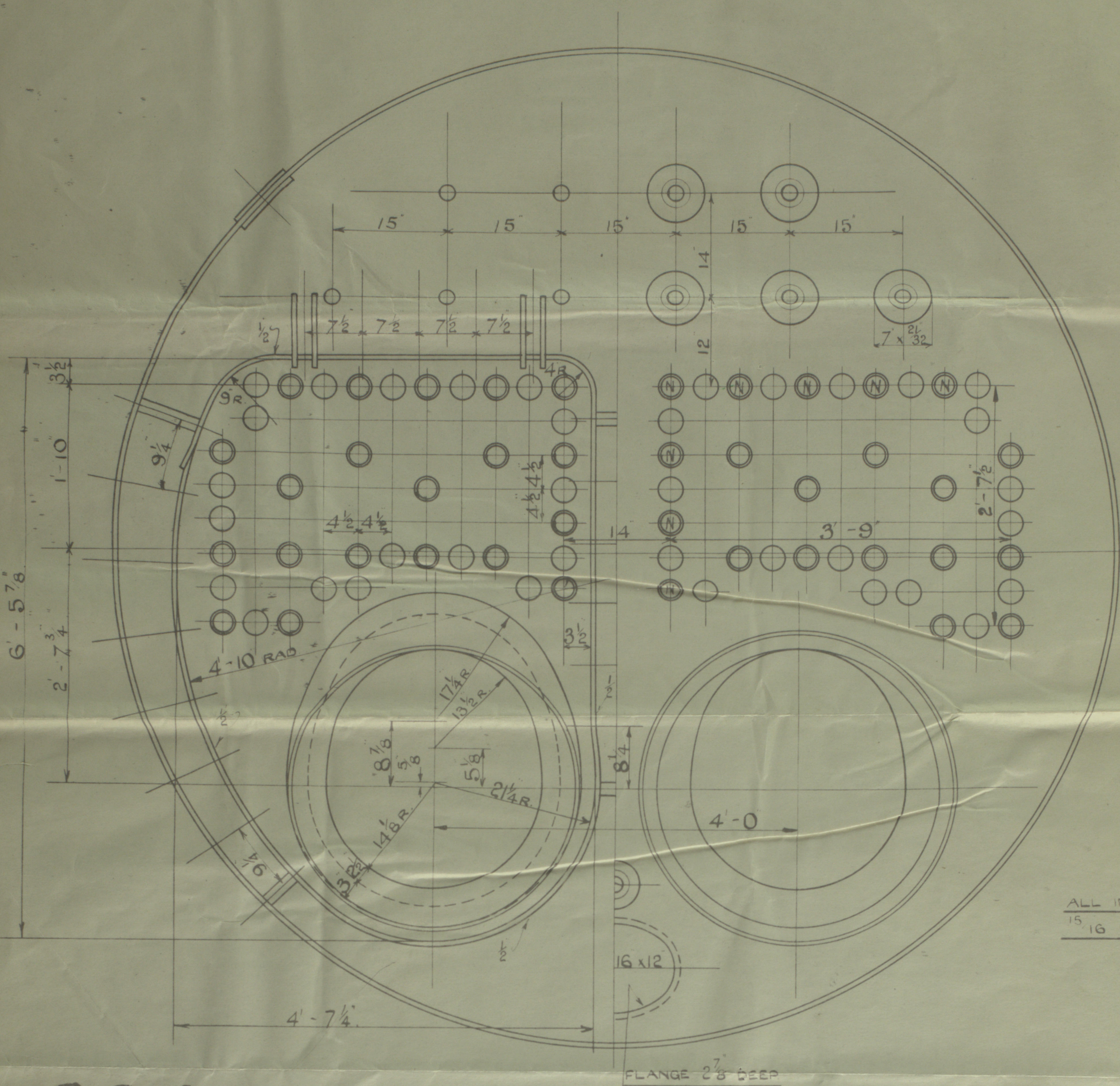
MANHOLE RING RIVETING.
40 - 15/16 H. 2 3/4 PITCH AT INNER ROW.

SHELL RIVETING.
PLATE 7. 80 30
RIVET 7. 99 68.

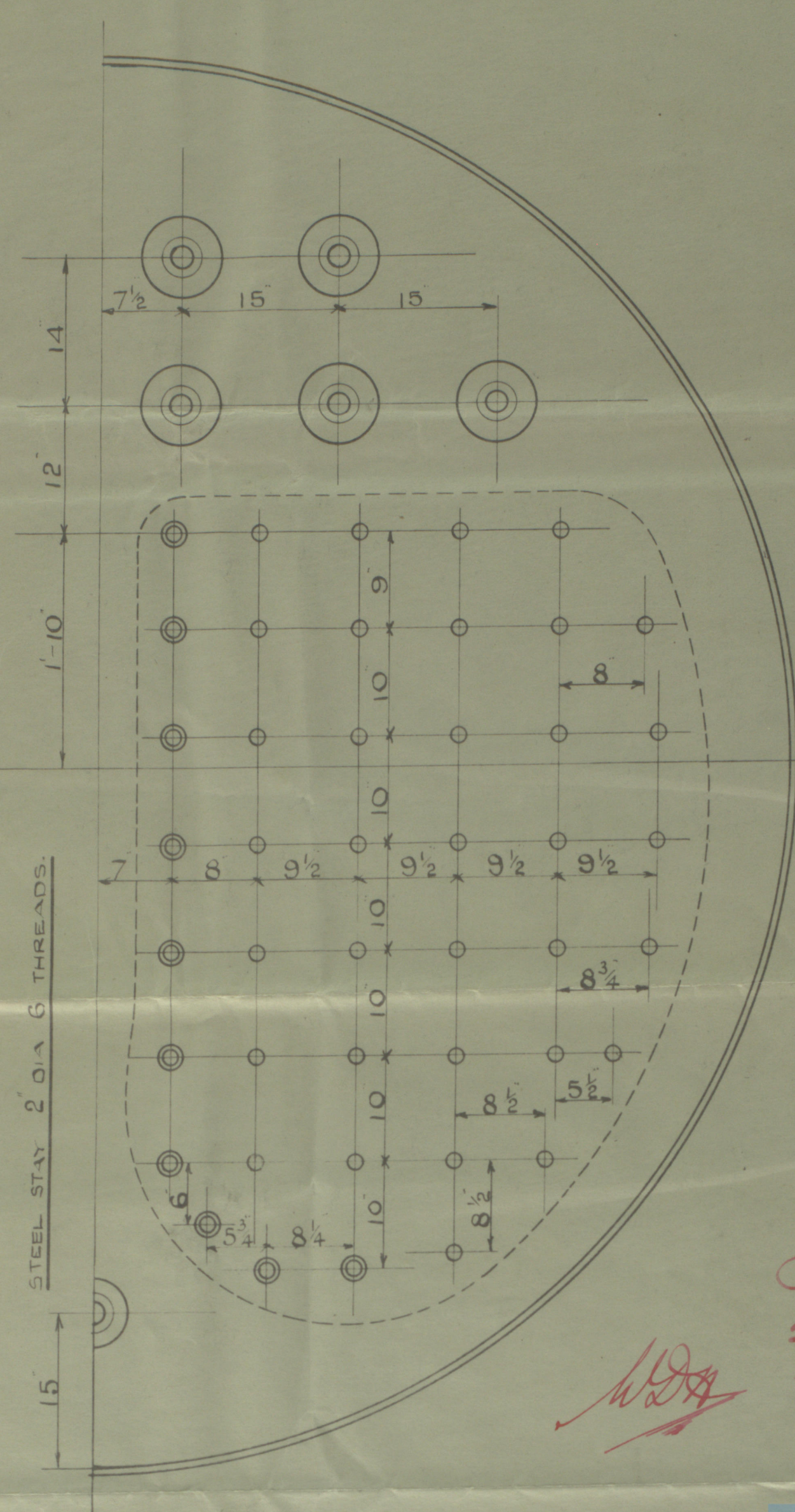
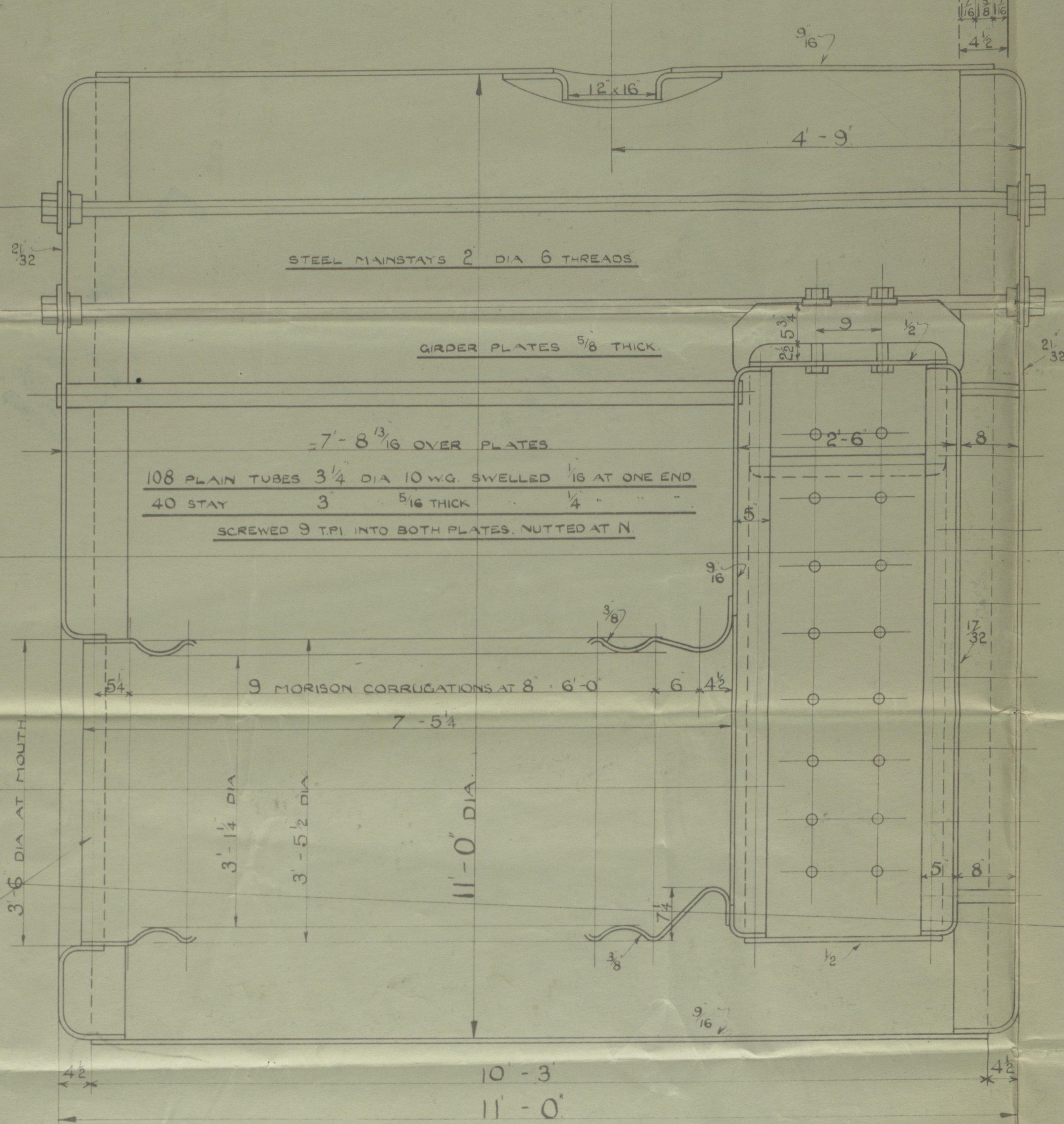


16 H. 3 P. DOUBLE RIVETING
CONTINUOUS BELOW FURNACE
PLATE 7. 68 75
RIVET 7. 48 64.

COMBUSTION CHAMBER SCREW STAYS
SCREWED 9 TPI INTO BOTH PLATES.
SINGLE NUT AT EACH END OUTSIDE.
AT BACK MARK 0 1 3/8 DIA.
SIDES 1 3/8
IN GIRDERS 1 1/4



ALL INTERNAL RIVETING.
15/16 H. 2 1/8 P. 3 LAP.



RILEY Bros.

No 5911

Unmended Plan

11'-0 x 11'-0 x 100lbs.

for

Craig Taylor & Co.

S.P. No 225

B. No 5911.

No. 6732
LLOYD'S TEST.
200 lbs.
WP 100lbs
7-8-29 SW

Middlebrough.

W498-0208



© 2019

Lloyd's Register
Foundation