

4/3/19

DIMENSIONS

LENGTH B.P.	390' 0"
BREADTH MLD.	51' 8"
DEPTH MLD TO UPPER DECK	27' 8"
BRIDGE	35' 8"



S.S. No 225-227.
MIDSHIP SECTION.

CLASS 100 A.1. LLOYDS NEW RULES.

STEEL.

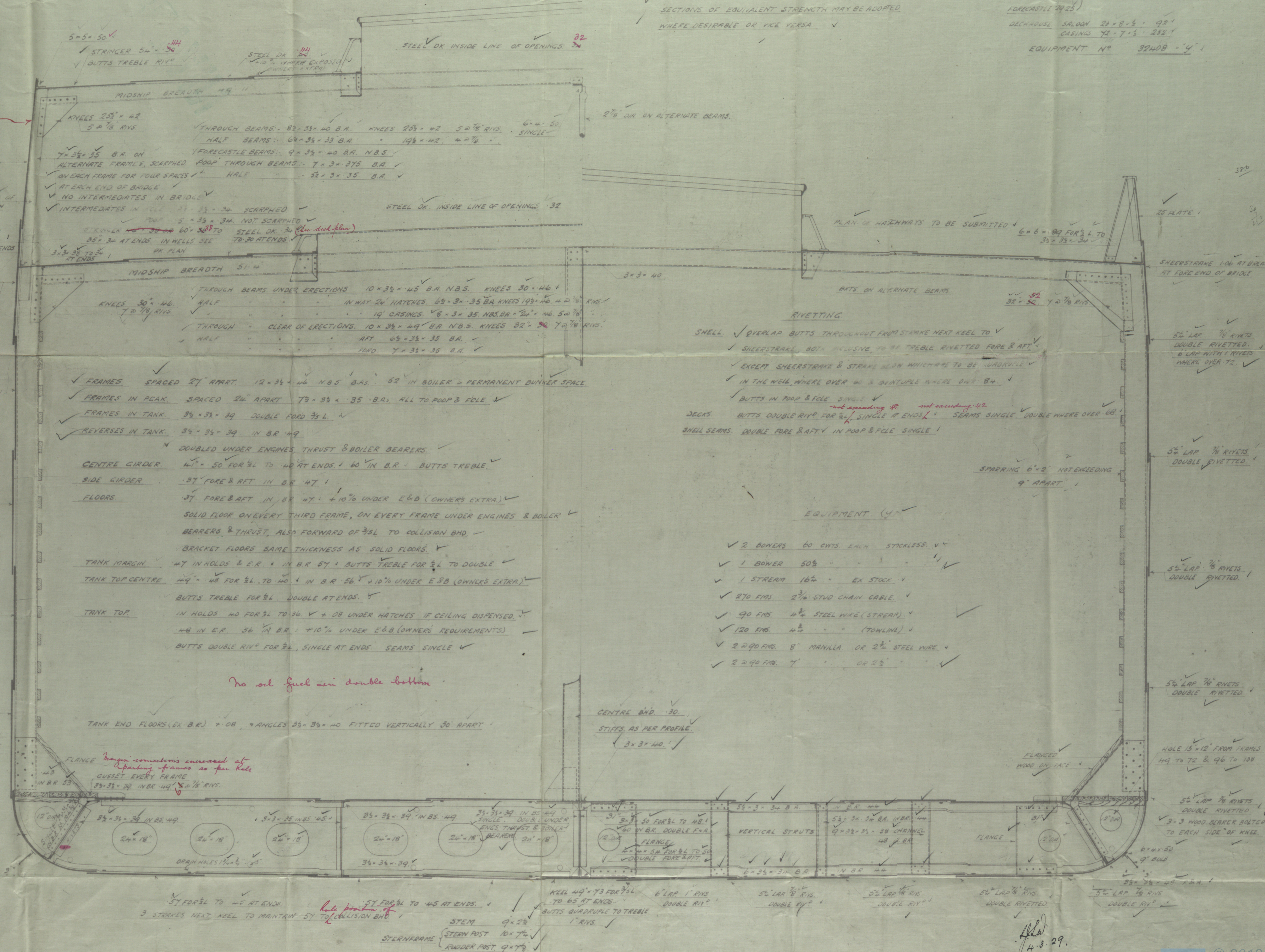
SCALE 1/4" = 1 FT. T.N. 15692

NUMERALS.

D	27' 6"
L x D	10511
L x (B + D)	30162
1/2 D TO UPPER DECK	13' 7"
1/2 D TO BRIDGE DECK	10' 6"
a (CORRECTED)	23.6
LONGITUDINAL No	30162
POOP 60' 3"	
BRIDGE 227' 25"	8 x 7/8" = 1902
FORECASTLE 24' 25"	
DECKHOUSE SALON 21' 8" x 1/2" 92'	
CASINO 71' 7" x 1/2" 232'	
EQUIPMENT No	32408

UNLESS OTHERWISE STATED ALL SCANTLINGS ARE OLD
BRITISH STANDARD, NEW BRITISH STANDARD
SECTIONS OF EQUIVALENT STRENGTH MAY BE ADOPTED
WHERE DESIRABLE OR VICE VERSA

Butts 4 R



filed
4.3.29.

Messrs Craig Taylors & Co's

No. 225. & 227.

Midship Lechon.

S.S. Portfield
MDB. RPT. No. 13857

S.S. Portregio
MDB. RPT. No. 13941

RETAIN



© 2019

Lloyd's Register
Foundation