

# S.S. No 225 MIDSHIP SECTION.

CLASS. 100. A.I. LLOYDS NEW RULES.

STEEL.

SCALE  $\frac{1}{2}$ " = 1 FT. T.N. 15697.

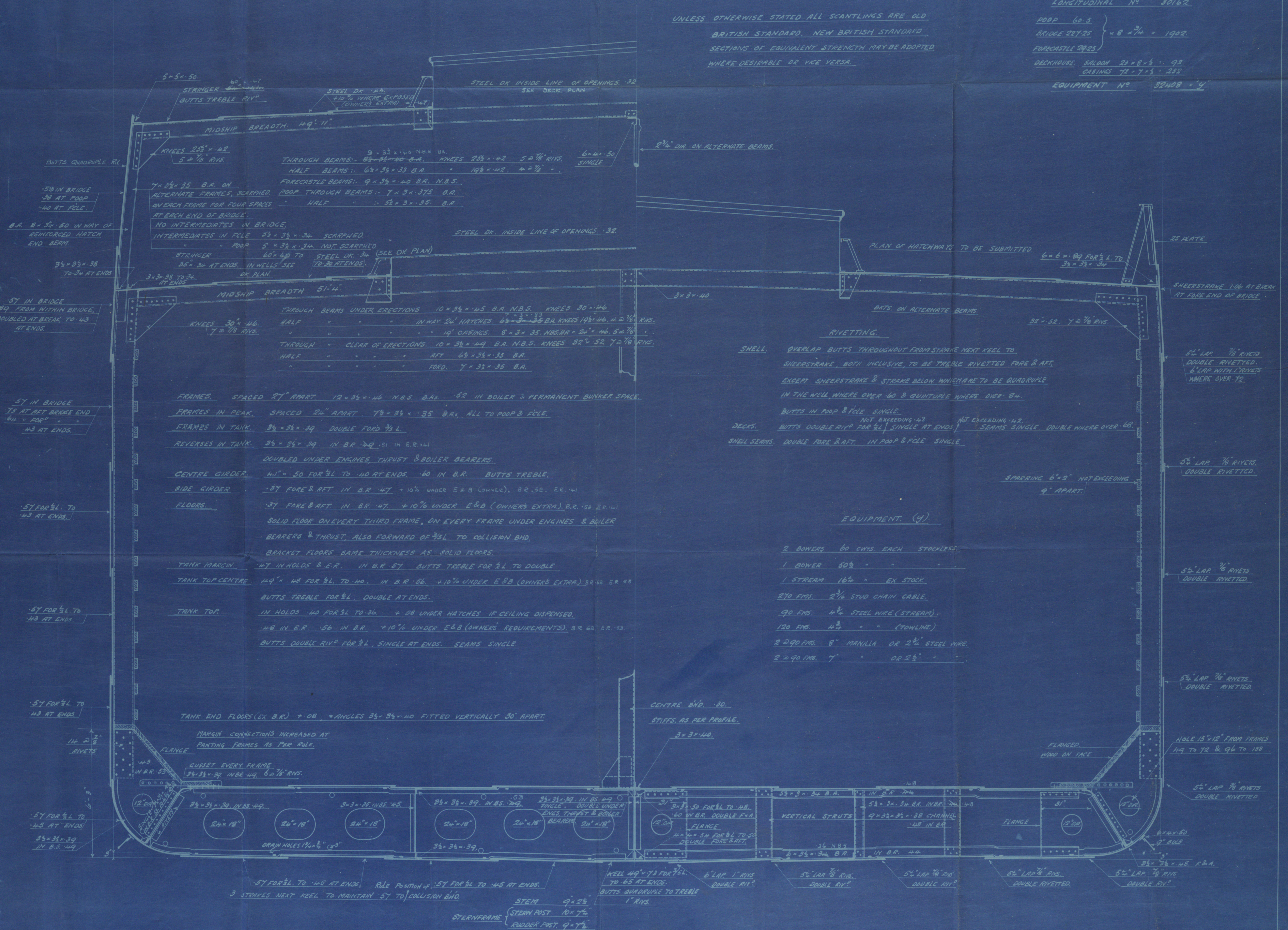
## DIMENSIONS.

LENGTH B.P.	380' 0"
BREADTH MLD.	51' 8"
DEPTH MLD. TO UPPER DK.	27' 8"
" " BRIDGE "	35' 8"

## NUMERALS.

D	27.66
L+D	10511.
L x (B+D)	30162.
$\frac{L}{10}$ TO UPPER DK.	18.73
$\frac{L}{10}$ TO BRIDGE DK.	10.66
d. (CORRECTED)	29.6
LONGITUDINAL N°	30162.
POOP 60.5	
BRIDGE 227.25	
FORECASTLE 29.25	
DECKHOUSE SALOON 22 x 8.4 " 98	
CASINGS 72 x 7.5 " 252	
EQUIPMENT N°	32408 " 4

UNLESS OTHERWISE STATED ALL SCANTLINGS ARE OLD  
BRITISH STANDARD. NEW BRITISH STANDARD  
SECTIONS OF EQUIVALENT STRENGTH MAY BE ADOPTED  
WHERE DESIRABLE OR VICE VERSA.





Messrs Craig Taylor & Co  
No 225  
S/S. PORTFIELD.  
MIDSHIP SECTION.  
(AS BUILT)

RETAIN

RETAIN



© 2019

Lloyd's Register  
Foundation

W498-0204