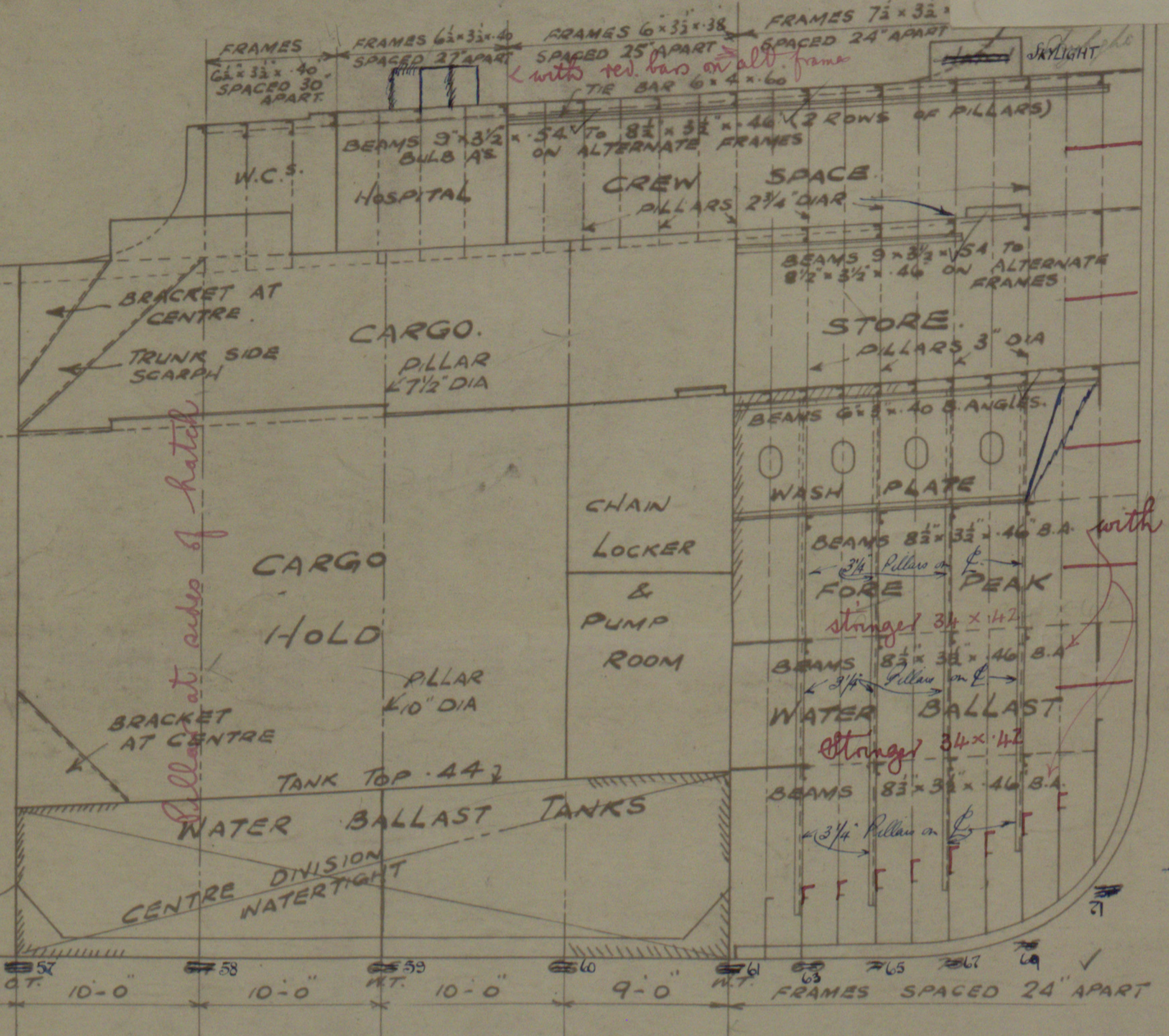
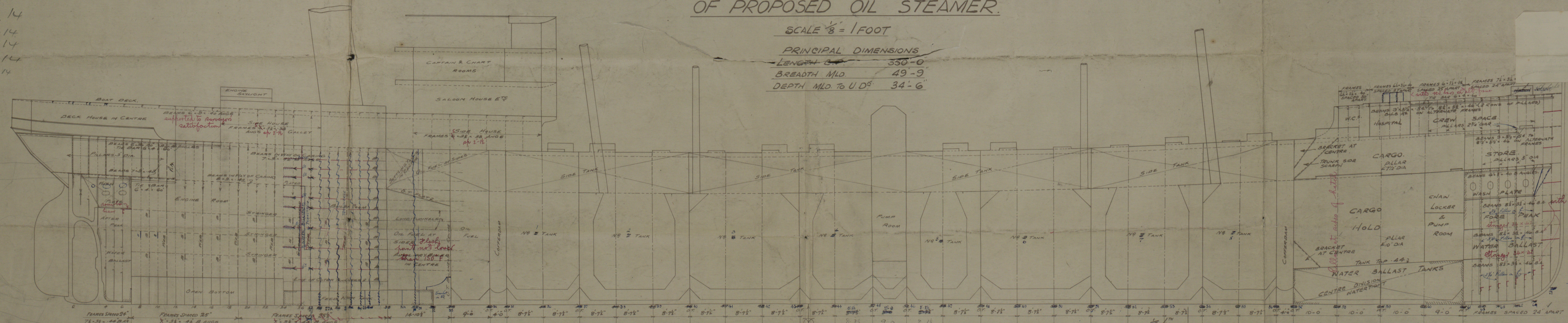


# LONGITUDINAL SECTION & DECK PLANS OF PROPOSED OIL STEAMER.

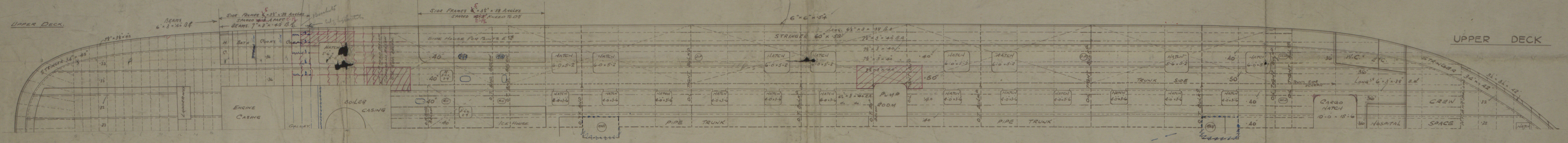
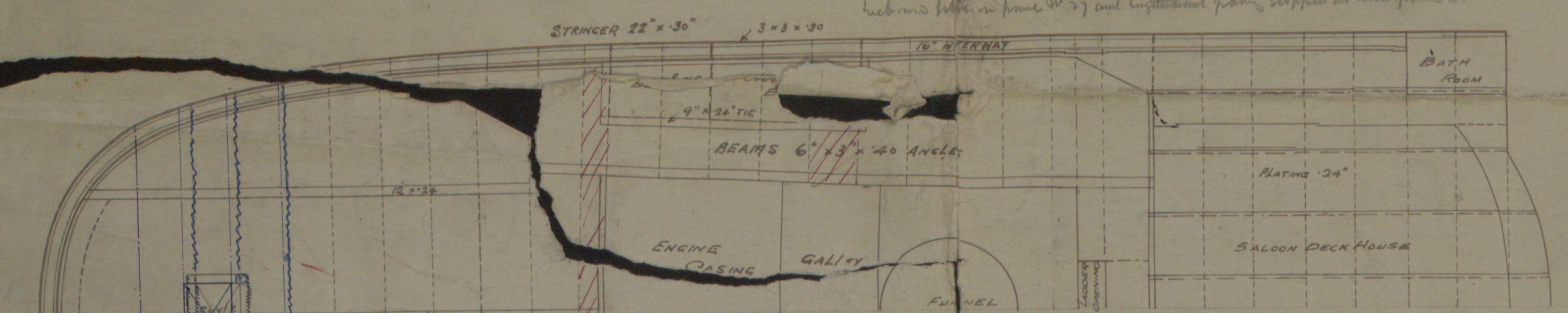
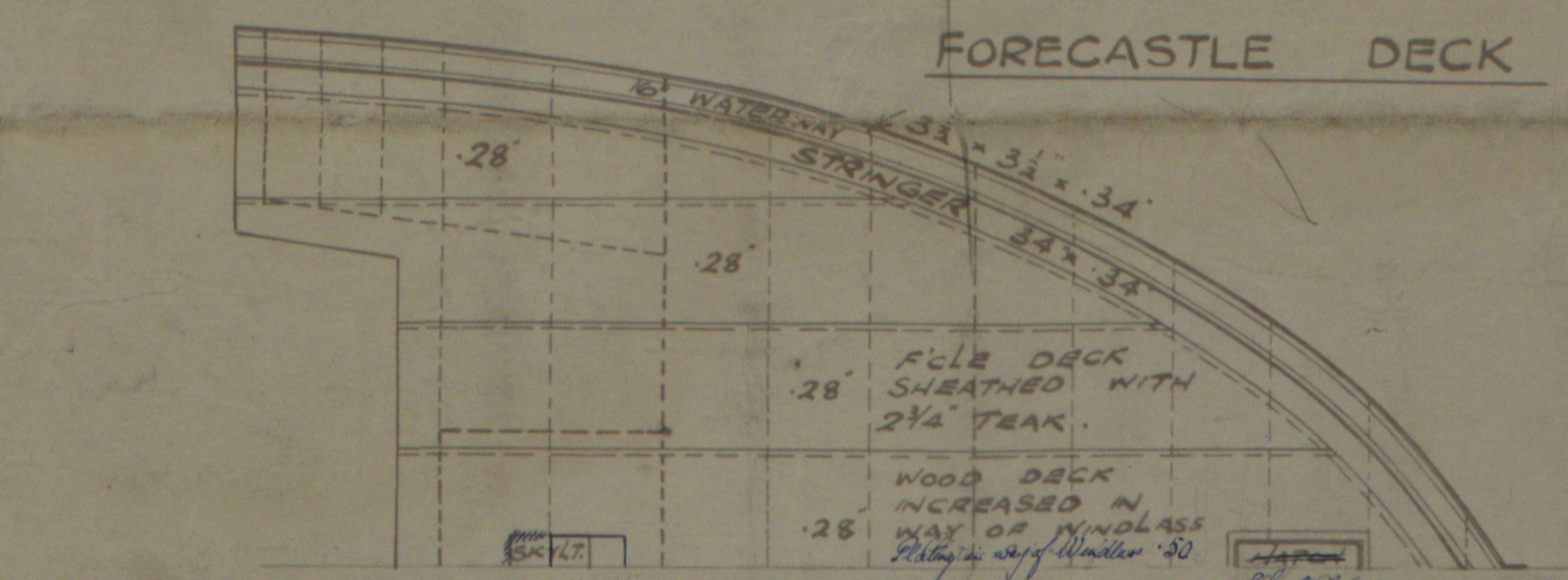
SCALE 1/8" = 1 FOOT

PRINCIPAL DIMENSIONS	
LENGTH O.A.	330'-0"
BREADTH MLD	49'-9"
DEPTH MLD TO U.D.	34'-6"

10.7.14  
20.7.14  
19.8.14  
24.8.14  
21.9.14



NOTE - WHERE TRANSVERSES & BULKHEAD WBS ARE INCREASED IN LENGTH DUE TO SHEER THE PARALLEL LENGTH SHOWN ON MIDSHIP SECTION TO BE MAINTAINED OR ALTERNATIVELY THE TRANSVERSES & WBS TO BE INCREASED 1/2" IN WIDTH FOR EVERY FOOT INCREASE IN DEPTH.



Date 16-7-14

**FOR ENCLOSURE TO**

**From**

**PALMERS S. & I. CO., Ltd.,**

Shipyard Department,

**JARROW-ON-TYNE.**

(S.Y.G.O. NO. 5.)

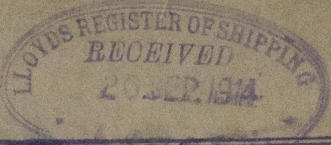
2/2

Palmas S. *any*  
No 845

Profile & Deck Plans

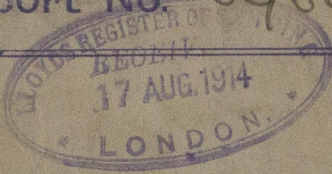
Now:

TOEM. MARU.

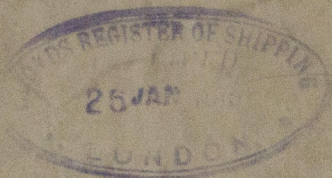
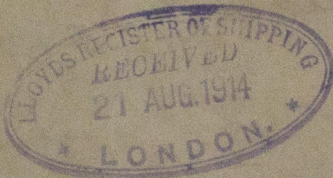


Ex. SS 'AUNGBAN' -  
NEWCASTLE ON TYNE.

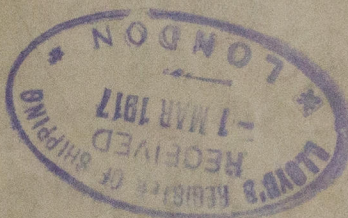
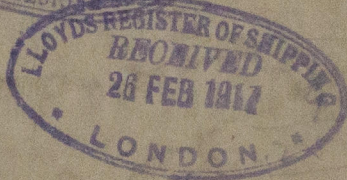
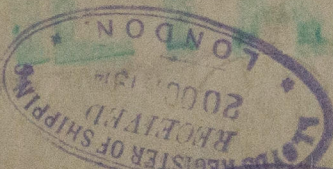
Report No. 69649



W. 149.



RETAIN



W492-0288 1/2



© 2020

Lloyd's Register  
Foundation



W47C 0000 2



© 2020

Lloyd's Register  
Foundation