



"SAN MANUEL"

No 932

Arrangement of shell  
plating different in San Manuel  
see separate plans.

# MIDSHIP SECTION

## PRINCIPAL DIMENSIONS.

LENGTH B.P. 407'-0" x 52'-0" B.M.D. x 31'-6" D.M.D. TO UPPER DECK

CLASS 100 A. LLOYDS

"ISHERWOOD" SYSTEM (C)

## LLOYD'S NUMERALS.

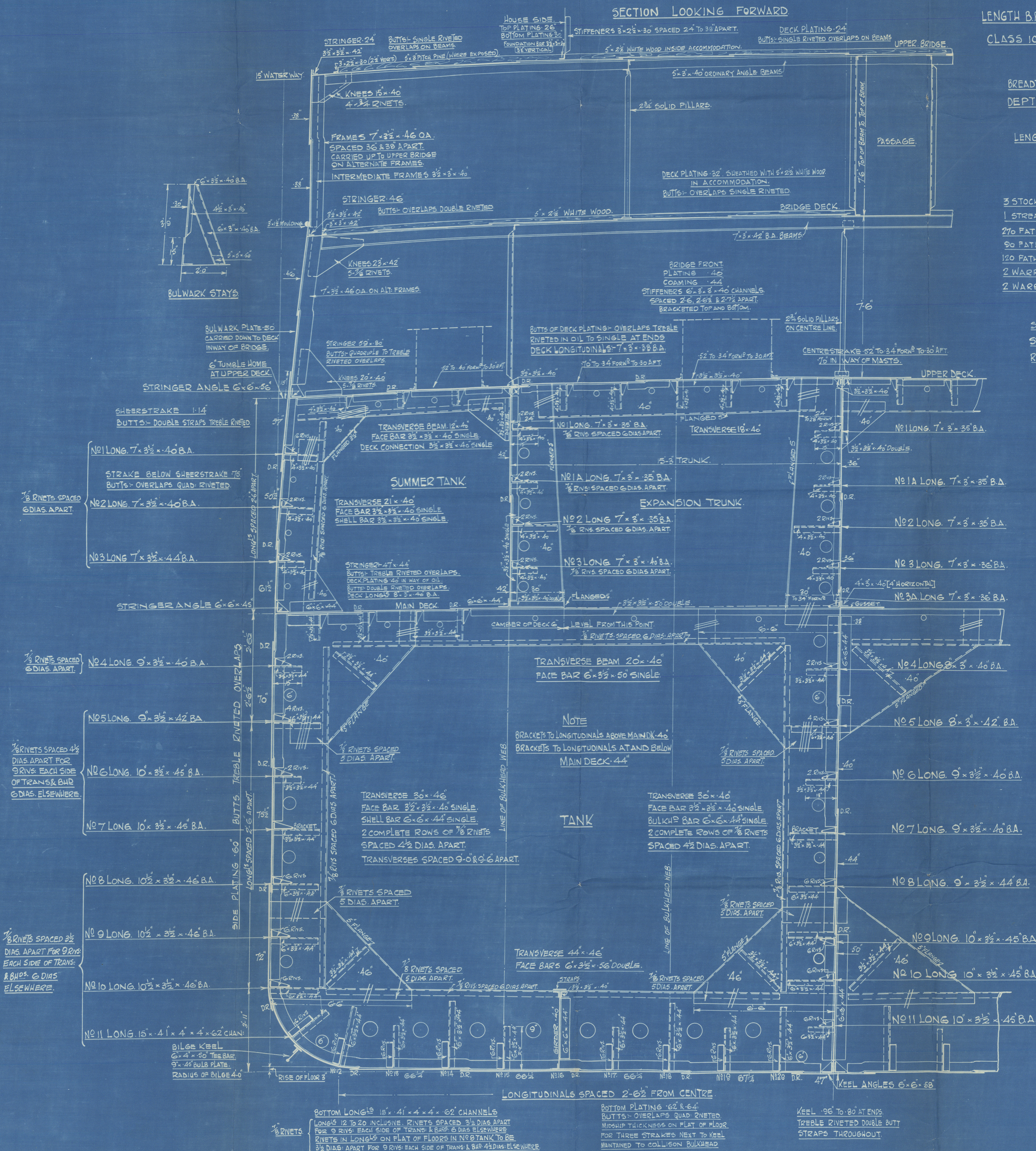
BREADTH MOULDED 52'-00  
DEPTH MOULDED 31'-50  
TRANSVERSE NUMBER = 83-50 d = 20-25  
LENGTH BETWEEN PERPS 407'-00  
LONGITUDINAL NUMBER = 33984-50 DEPTH TO LENS

## EQUIPMENT No 35731.

3 STOCKLESS BOWER ANCHORS 63 3/4 CWTs  
1 STREAM ANCHOR [RODGERS] 17 1/2 CWTs. Ex Stock  
270 FATHOMS STUD CHAIN CABLE. 2 1/2" DIAM.  
90 FATHOMS STREAM WIRE. 4 1/2" STEEL WIRE  
120 FATHOMS TOW LINE. 5" do. do.  
2 WARPS 90 FATHOMS EACH. 2 1/2" do. do.  
2 WARPS 90 FATHOMS EACH. 2 1/2" do. do.

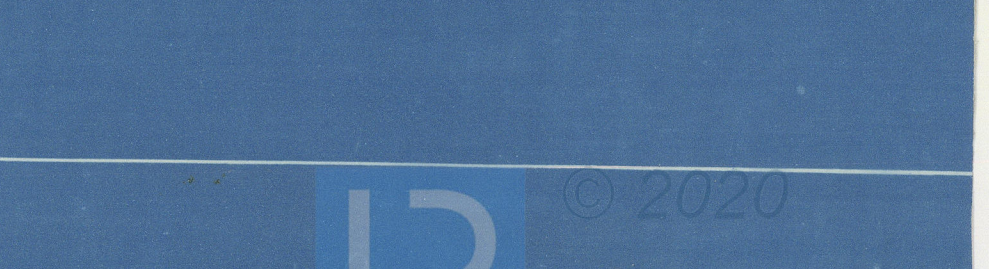
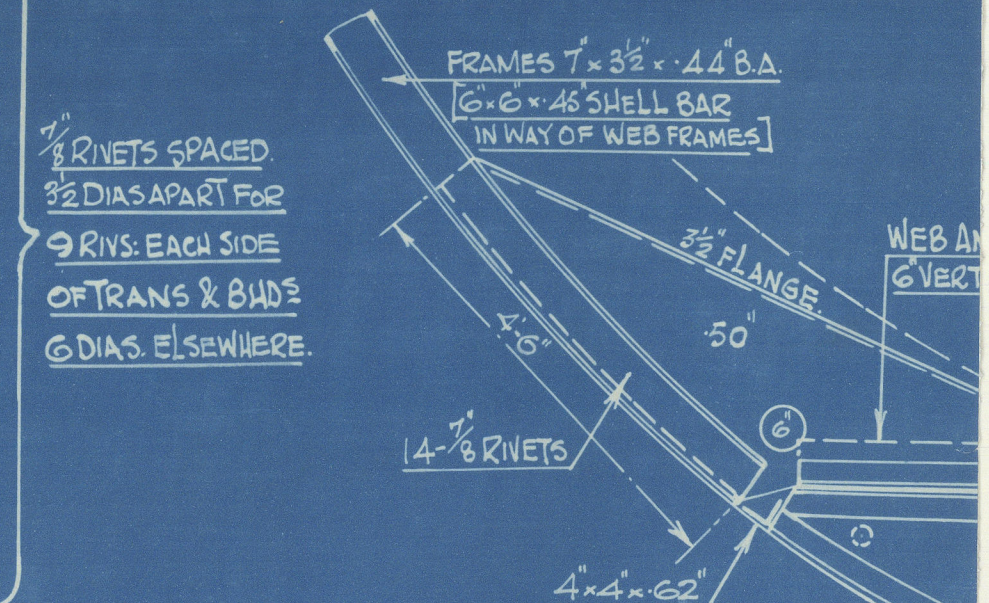
## FORGINGS.

STEM BAR. 10 1/2" x 2 1/2"  
STERN FRAME 8 POST, 10 1/2" x 1 1/2". R. POST 9" x 1 1/2".  
RUDDER HEAD. 1 1/2" DIA. (ABOVE GUN SIZE, OWNER'S REQUIREMENTS)



7/8 RIVETS  
SPACED 6 DIAS APART

7/8 RIVETS SPACED 4 1/2 DIAS  
APART FOR 9 RIVS EACH  
SIDE OF TRANS & BMD'S  
6 DIAS ELSEWHERE.





M4911-0062  
212  
Date... 8-12-22

FOR ENCLOSURE TO

Lloyds Register of Shipping  
From Newcastle.

PALMERS S. & I. CO., Ltd.,

Shipyard Department,

JARROW-ON-TYNE.

PALMERS 932  
Nº 932  
"SAN MANUEL" ONLY  
MID-SECTION AS BUILT

46258

RETAIN

S/S "SAN MANUEL"  
NEWCASTLE ON TYNE

Report No. 46258

W491-0062



© 2020

Lloyd's Register  
Foundation