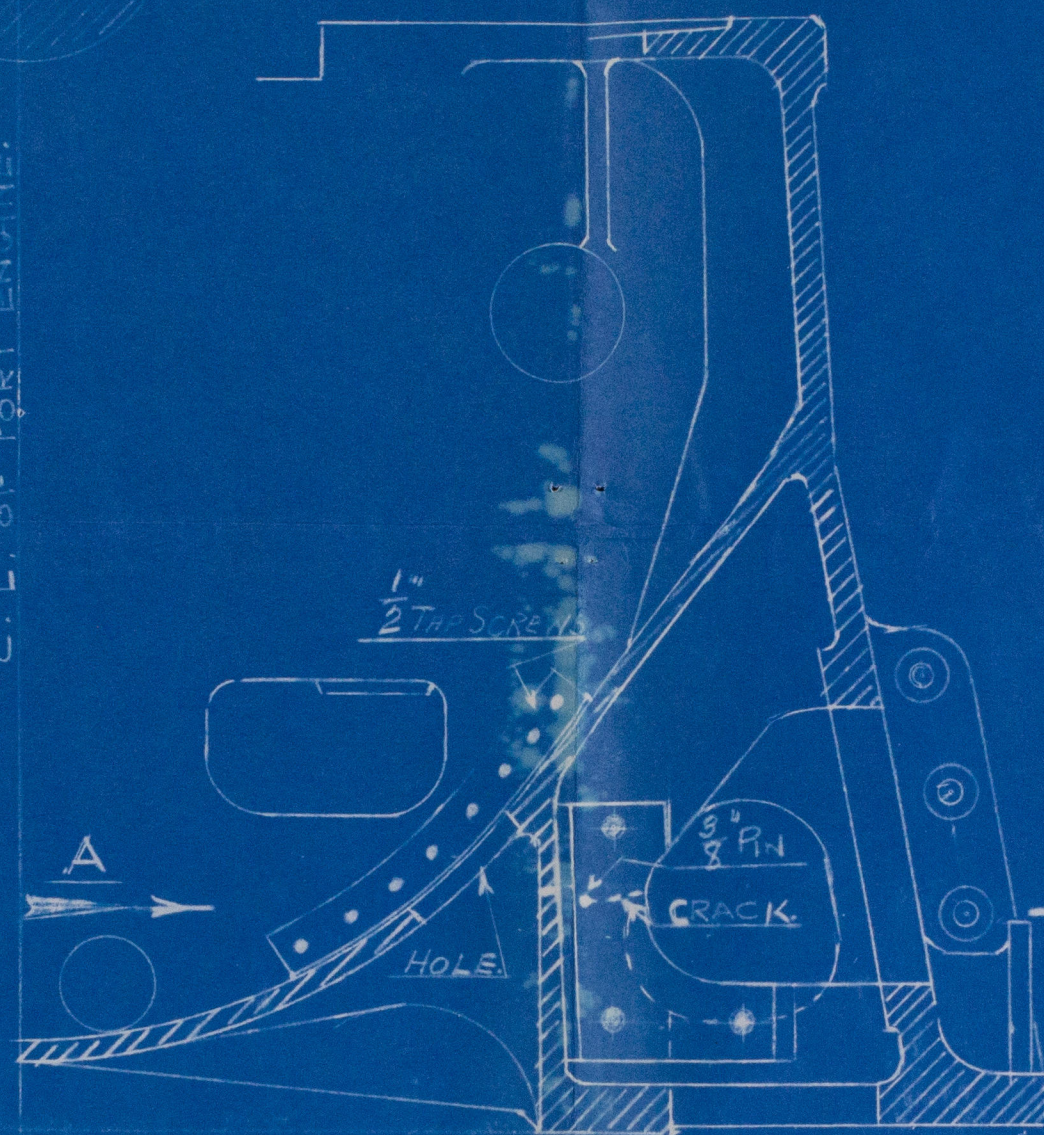
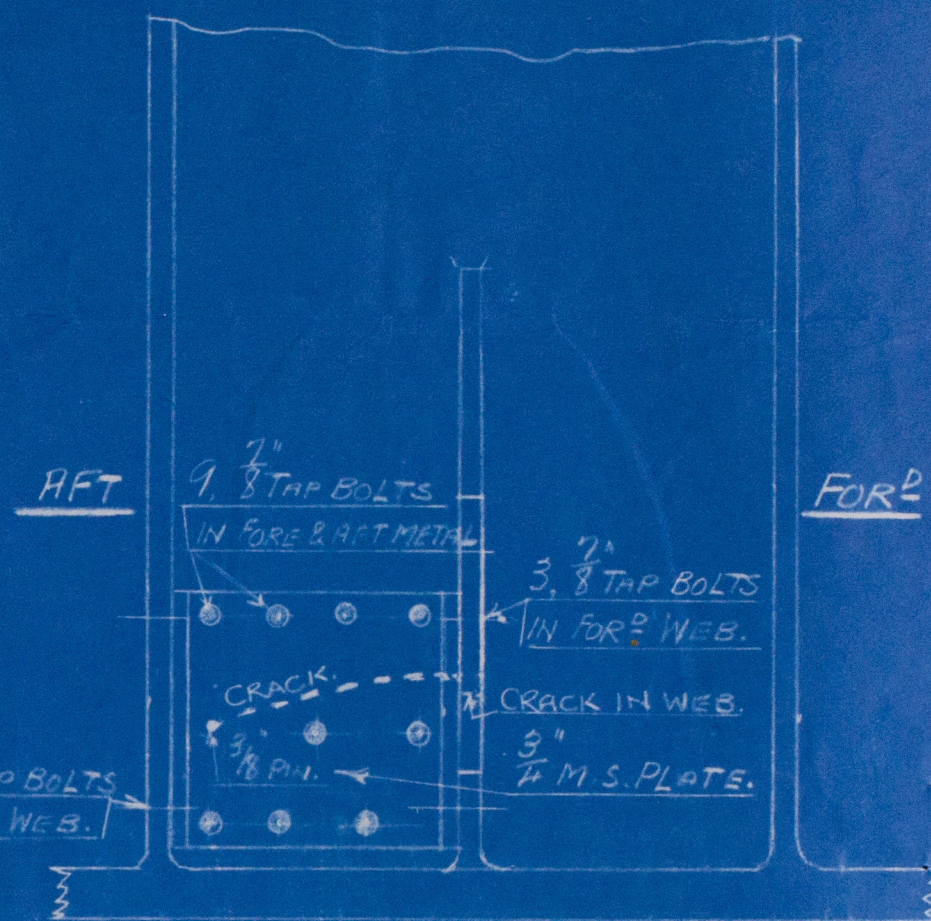


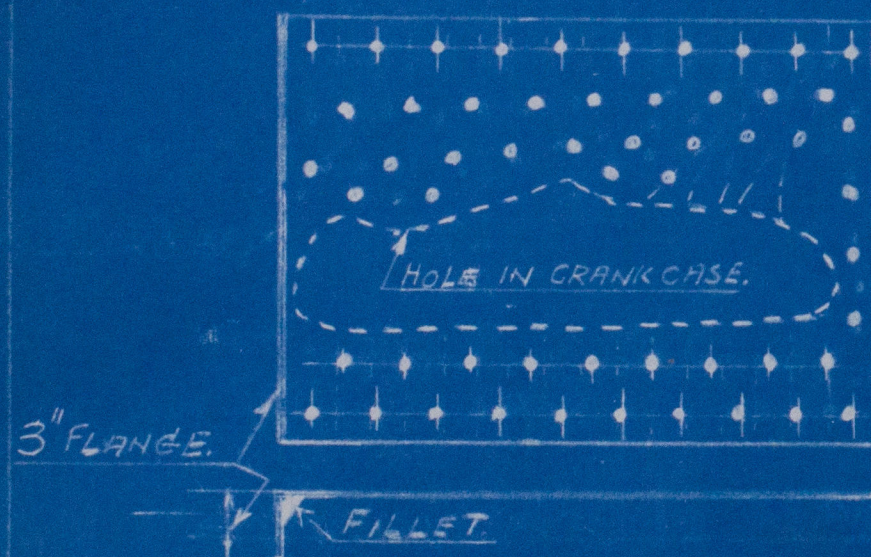
—VIEW LOOKING IN DIRECTION OF —
— ARROW "A" —



—SECTION THRO' FOR^d CRANKPIT—PORT ENG.—
— LOOKING FOR^d. —



—VIEW LOOKING IN DIRECTION OF —
— ARROW "B" —



EXPANDED VIEW
OF COPPER PATCH.
1/2" TAP SCREWS.
HEADS THREADED WITH COPPER WIRE.

HALIFAX SHIPYARDS
LIMITED
JUL 18 1938
DRAWING OFFICE
HALIFAX, N. S.

M. V. KOLL.	
PATCHES ON FOR ^d END OF C. CASE PORT ENG.	
HALIFAX SHIPYARDS LIMITED	
1" = ONE FOOT.	
18-7-38.	CX. 526.

m.v. "Koll."
Afx. rpt. no 2905.
Repairs to Crankcase.

W49-0059



© 2020

Lloyd's Register
Foundation