

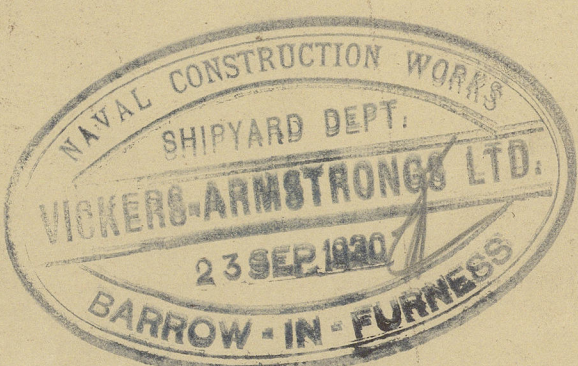
1 piece to  
shoulder & repair of roof

pp 2

Job No 579.

Roof & Bridge Bulkheads.

Scale 1/4" = 1 ft.



Note: Bulkheads watertight except where otherwise marked.

Roof & Bridge Fronts

Types of Rivets.

Position	Dia	Head	Point	Csk	Shaping in m/s
Butts & Laps					
In way of Oil Tanks	3/4"	Bar	Csk	Csk	2 1/2"
Clear of Oil Tanks	3/4"	Bar	Csk	da	3 1/2"
To Shell	3/4"	Csk	Csk	-	3 1/2"
Boundary Bars					
To Bhd at Sides	3/4"	Bar	Csk	Bar	3 1/2"
To Bhd at Bottom	3/4"	Bar	Csk	Bar	3 1/2"
To Upper DK	3/4"	Bar	Csk	Bar	5 1/4"
To Roof & Bridge Dks	3/4"	Bar	Csk	Bar	5 1/4"
Horizontal Stiffeners	3/4"	Bar	Csk	Csk	5 1/4"
Angles connecting ribs to bulkheads	3/4"	Bar	Csk	Csk	5 1/4"
Brackets	3/4"	Bar	Csk	Csk	da in details
Butts & Laps					
To Shell	5/8"	Bar	Csk	Csk	3 1/2"
To Bhd at Sides	5/8"	Bar	Csk	Bar	3 1/2"
To Bhd at Bottom	5/8"	Bar	Csk	Bar	3 1/2"
To Upper DK	5/8"	Bar	Csk	Bar	4 1/2"
To Bridge DK	5/8"	Bar	Csk	Bar	4 1/2"
Vertical Stiffeners	5/8"	Bar	Csk	Csk	4 1/2"
Brackets	5/8"	Bar	Csk	Csk	da in details

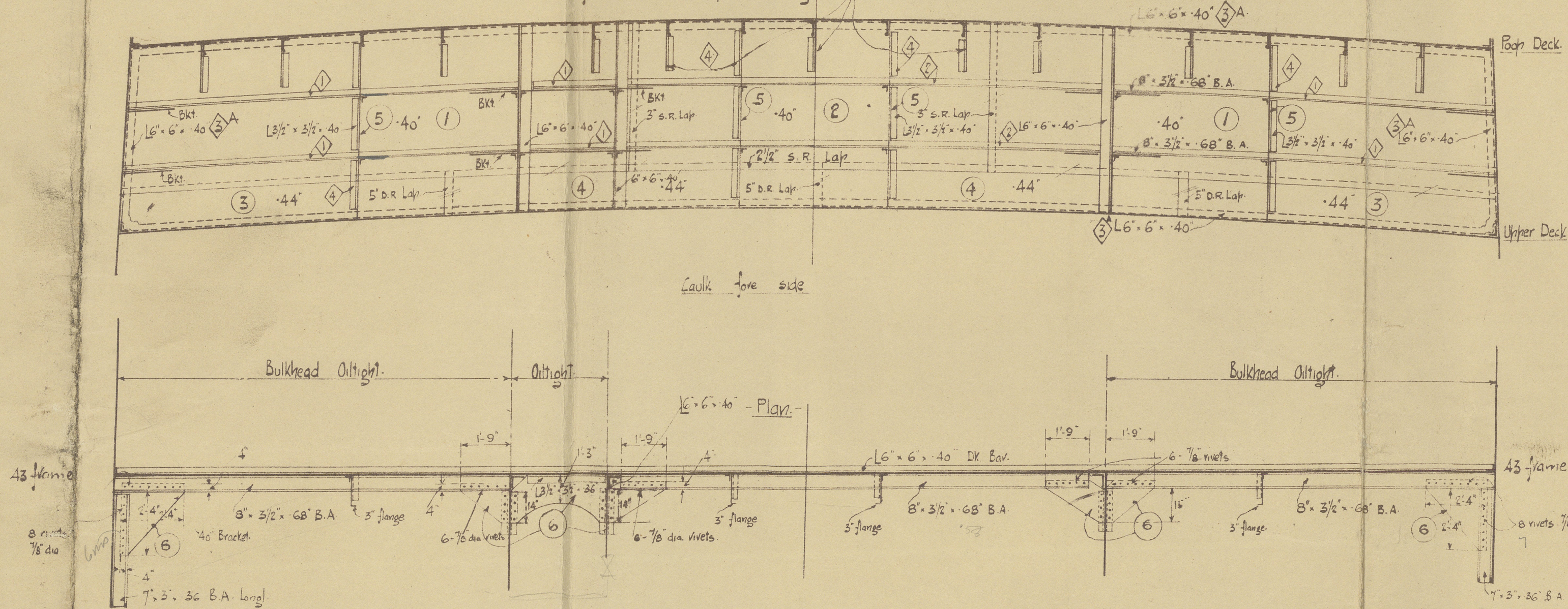
Copy of Order

Mark	Reces	Length	Breadth	Thks	Remarks
P.F.B. 579					
1	2	Roof Front Bulkhead (Plates)			
2	1	14'-11"	74"	40"	
3	2	13'-5"	73"	44"	
4	2	15'-7"	75"	44"	
5	4	7'-6"	19"	40"	
6	2	14'-0"	30"	40"	each to cut 7 brackets
B.F.B. 579					
1	1	14'-9"	76"	40"	
2	1	13'-8"	76"	40"	
3	1	14'-0"	76"	40"	
4	2	19'-1"	25"	44"	Coaming fit
5	1	20'-4"	25"	44"	da
6	7	7'-9"	19"	40"	Weld fit
7	1	6'-5"	49 1/2"	40"	
8	1	13'-5"	76"	40"	
9	2	6'-6"	30"	40"	To cut 4 ribs each
B.L.B. 579					
1A	1	11'-7"	48 1/2"	30"	
2A	2	8'-1"	60 1/2"	30"	
3A	1	12'-6"	48 1/2"	30"	
4	1	4'-0"	18"	30"	Doubling
5	1	5'-1"	25"	30"	Door
6	1	12'-0"	25"	40"	Brackets
P.F.B. 579					
1	1	38'-0"	8' x 3 1/2"	60"	
2	1	39'-0"	8' x 3 1/2"	60"	
3A	3	48'-0"	6' x 6"	50"	
4	1	26'-6"	3 1/2' x 3 1/2"	40"	
5	1	13'-0"	3 1/2' x 3 1/2"	40"	
B.F.B. 579					
1	2	41'-0"	7' x 3"	36"	K.A.
2	1	25'-3"	7' x 3"	36"	K.A.
3	1	33'-0"	3 1/2' x 3 1/2"	40"	
4	4	34'-0"	3 1/2' x 3 1/2"	40"	
5	1	26'-0"	3 1/2' x 3 1/2"	40"	
6	1	30'-0"	3 1/2' x 3 1/2"	40"	
7	1	15'-0"	3 1/2' x 3 1/2"	40"	
B.L.B. 579					
1	4	32'-6"	3 1/2' x 3 1/2"	36"	
2	2	29'-0"	3 1/2' x 3 1/2"	34"	
3	1	36'-6"	3 1/2' x 3 1/2"	34"	
4	1	30'-0"	3 1/2' x 3 1/2"	36"	
5	1	26'-0"	3 1/2' x 3 1/2"	36"	

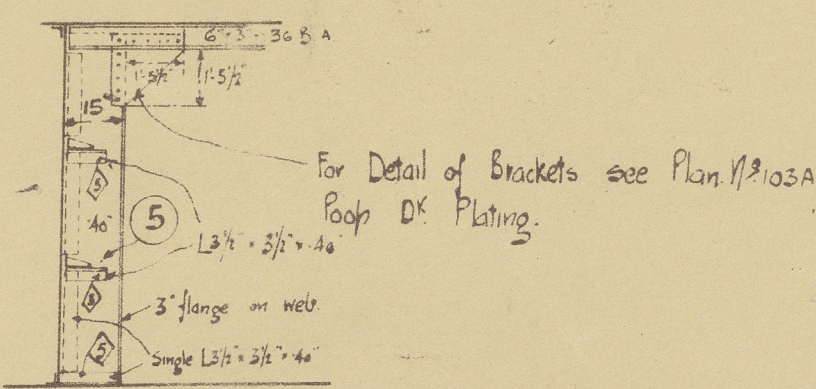
Copy of Order (contd.)

Mark	Reces	Length	Breadth	Thks	Remarks
P.F.B. 579					
7	1	12'-6"	51 1/2"	30"	
8	1	8'-1"	58 1/2"	30"	
9	1	8'-1"	39 1/2"	30"	
10	1	8'-1"	46"	30"	
11	1	11'-9"	51 1/2"	30"	
12	1	12'-5"	48 1/2"	30"	
13	1	12'-8"	51 1/2"	30"	
P.F.B. 579					
10	1	9'-0"	38"	40"	

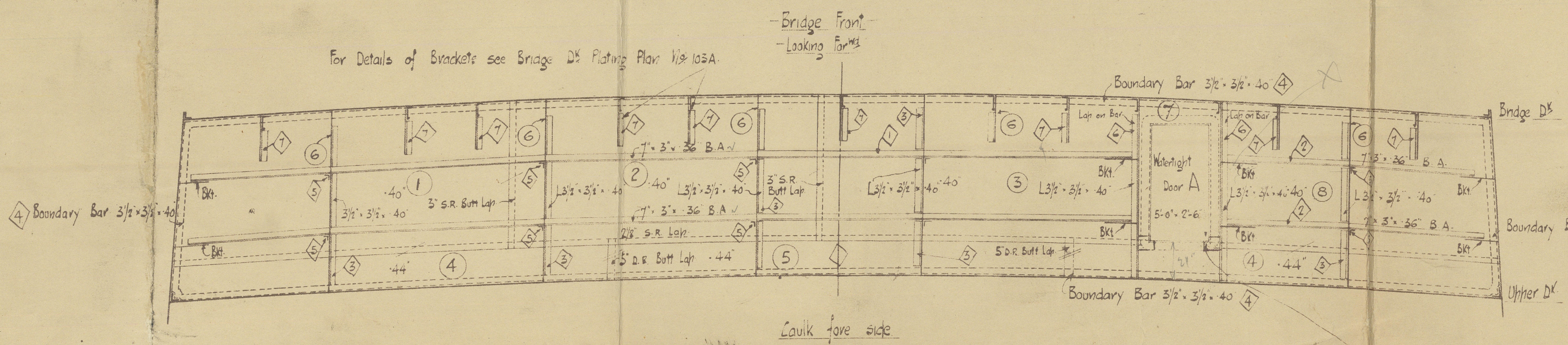
Roof Front 43 frame -  
Looking for 1/2"



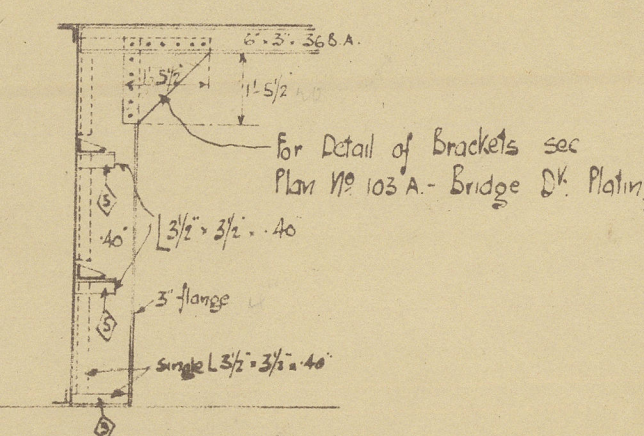
Section at Web



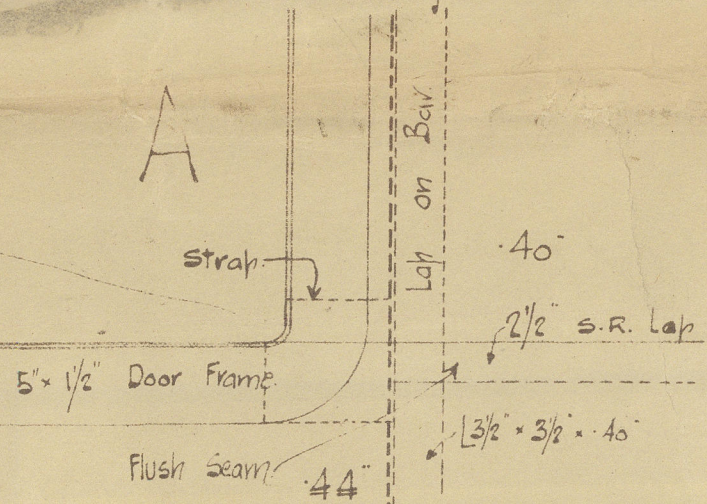
For Details of Brackets see Bridge DK Plating Plan No 103A



Section at Web



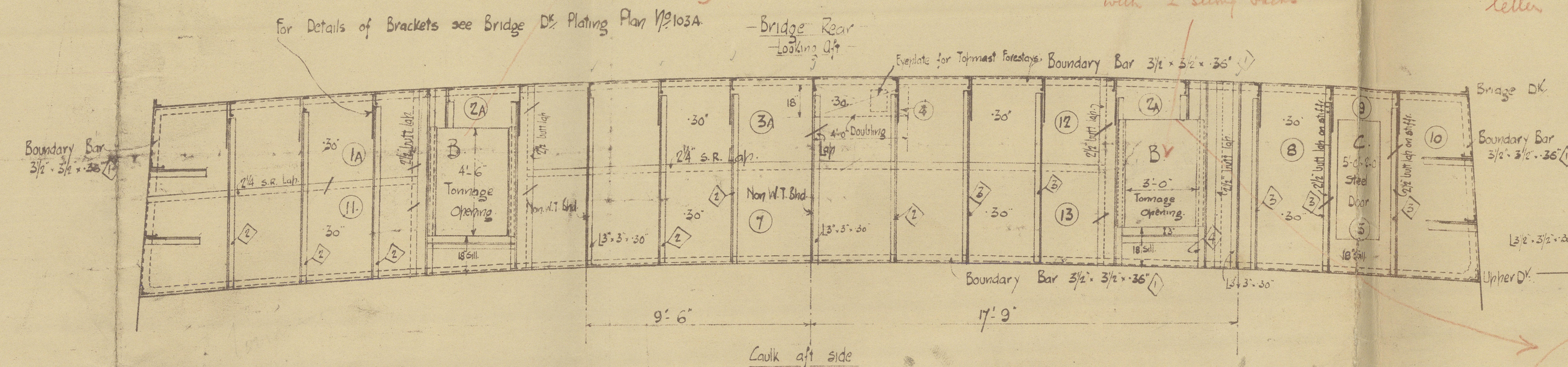
Detail of Bottom of Watertight Door (Looking aft)



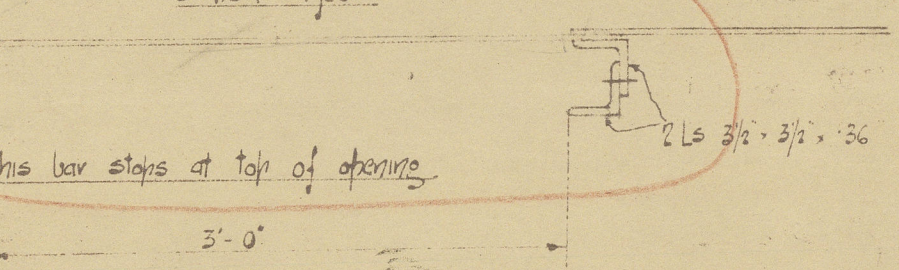
Wood Shifting Brackets

Portable plate W.T. with 2 strong bracks

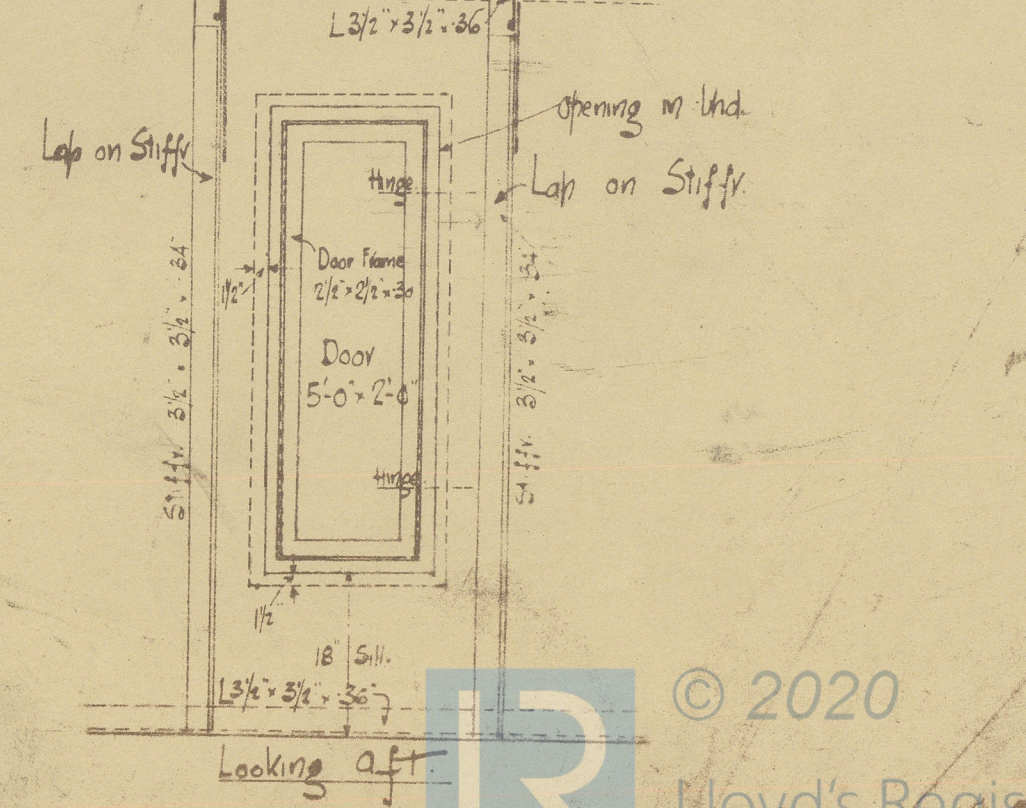
Notes in red refer to Belfast letter 4/10/20



Detail of Tonnage Door - B - Scale 1" = 1 foot



Detail of N.W.T. Steel Door - C - Scale 1/2" = 1 ft





579

W488-0043



© 2020

Lloyd's Register  
Foundation