

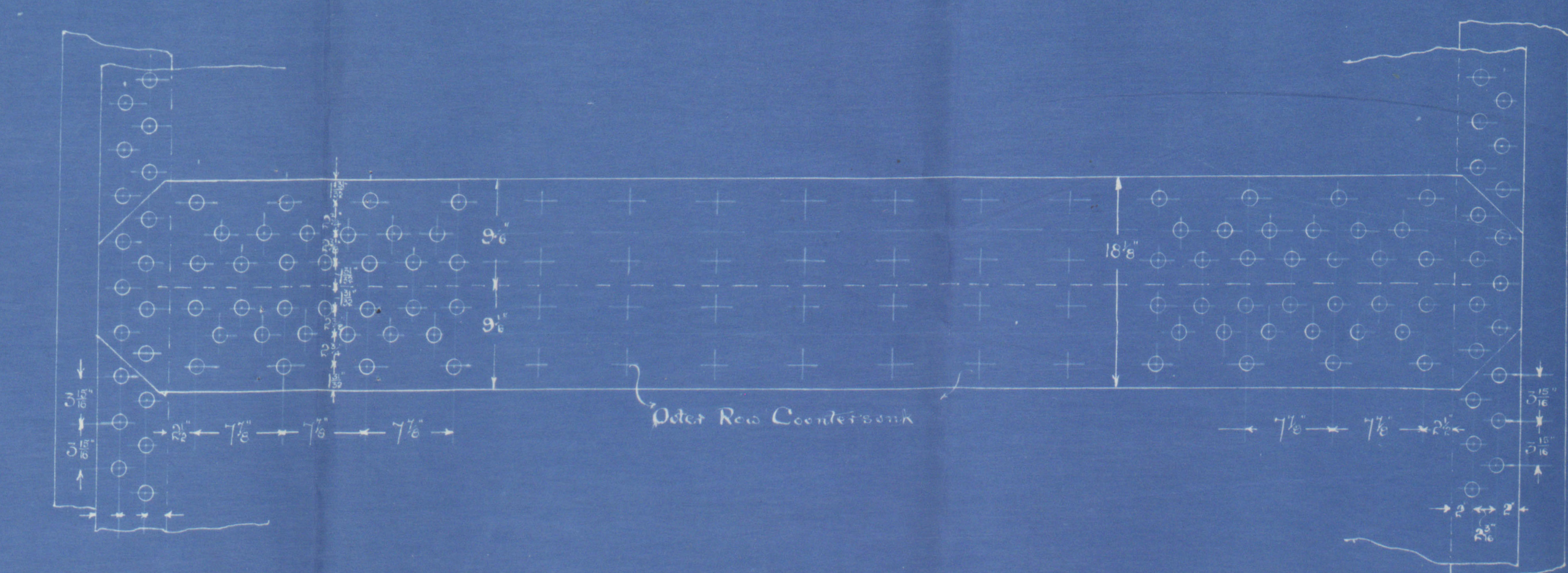
8/11/20

Heating Surface per Boiler.		
2 1/2 Fire Tubes	87 1/2 sq ft.	87 1/2 sq ft.
2 Fire Boxes	152 1/2 sq ft.	152 1/2 sq ft.
196 Stay Tubes	1043 1/2 sq ft.	534 sq ft.
Front Plate	22 1/2 sq ft.	22 1/2 sq ft.
Total	1505 1/2 sq ft.	1156 1/2 sq ft.

Cross Section Fire Tubes. 836 sq ft.
Inner " " " " 531 sq ft.

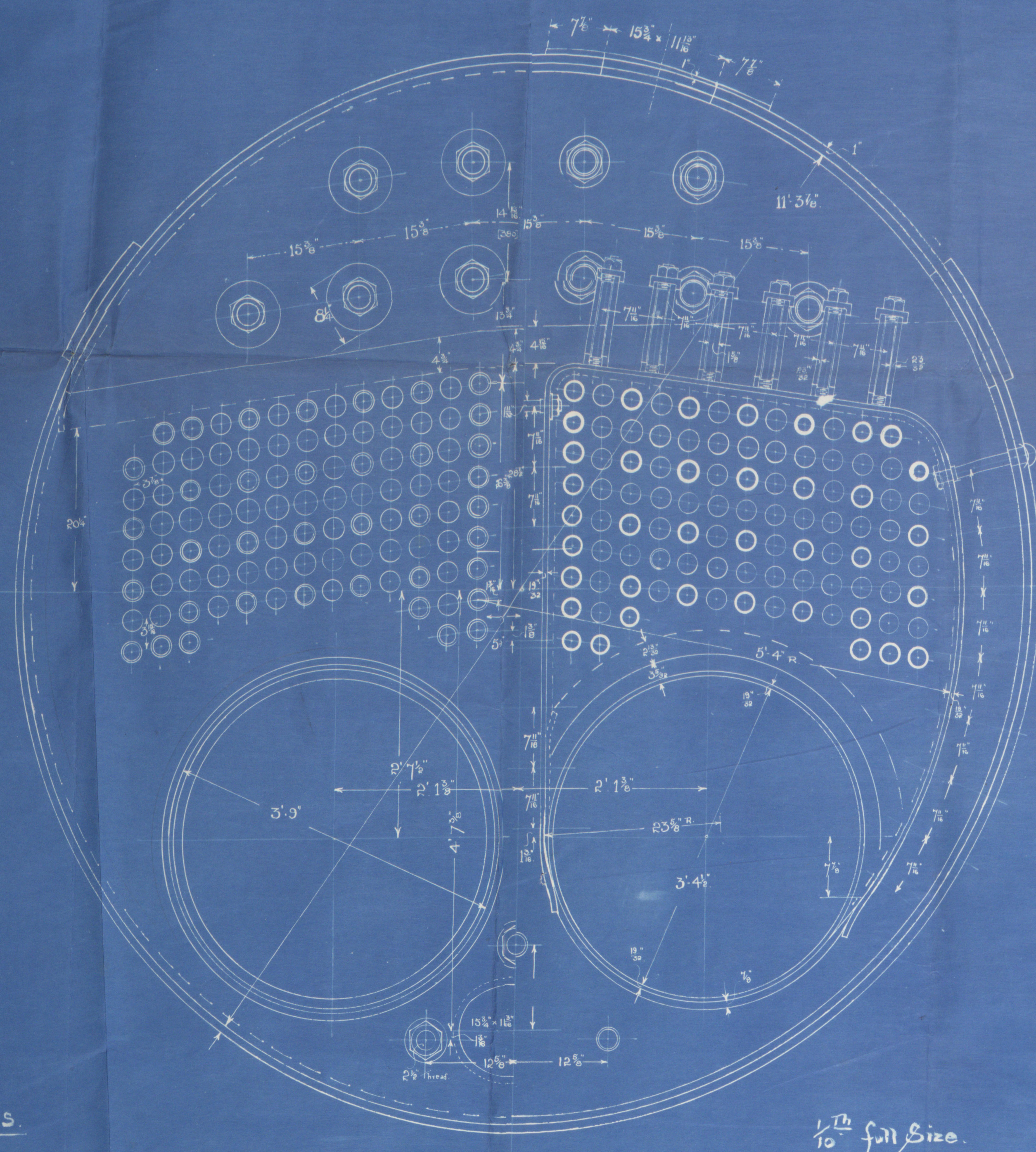
Grate Area, each Boiler, 35 1/2 sq ft.

Heating Surface for 2 Boilers 2011 1/2 sq ft.
Grate Area " " " 71 sq ft.



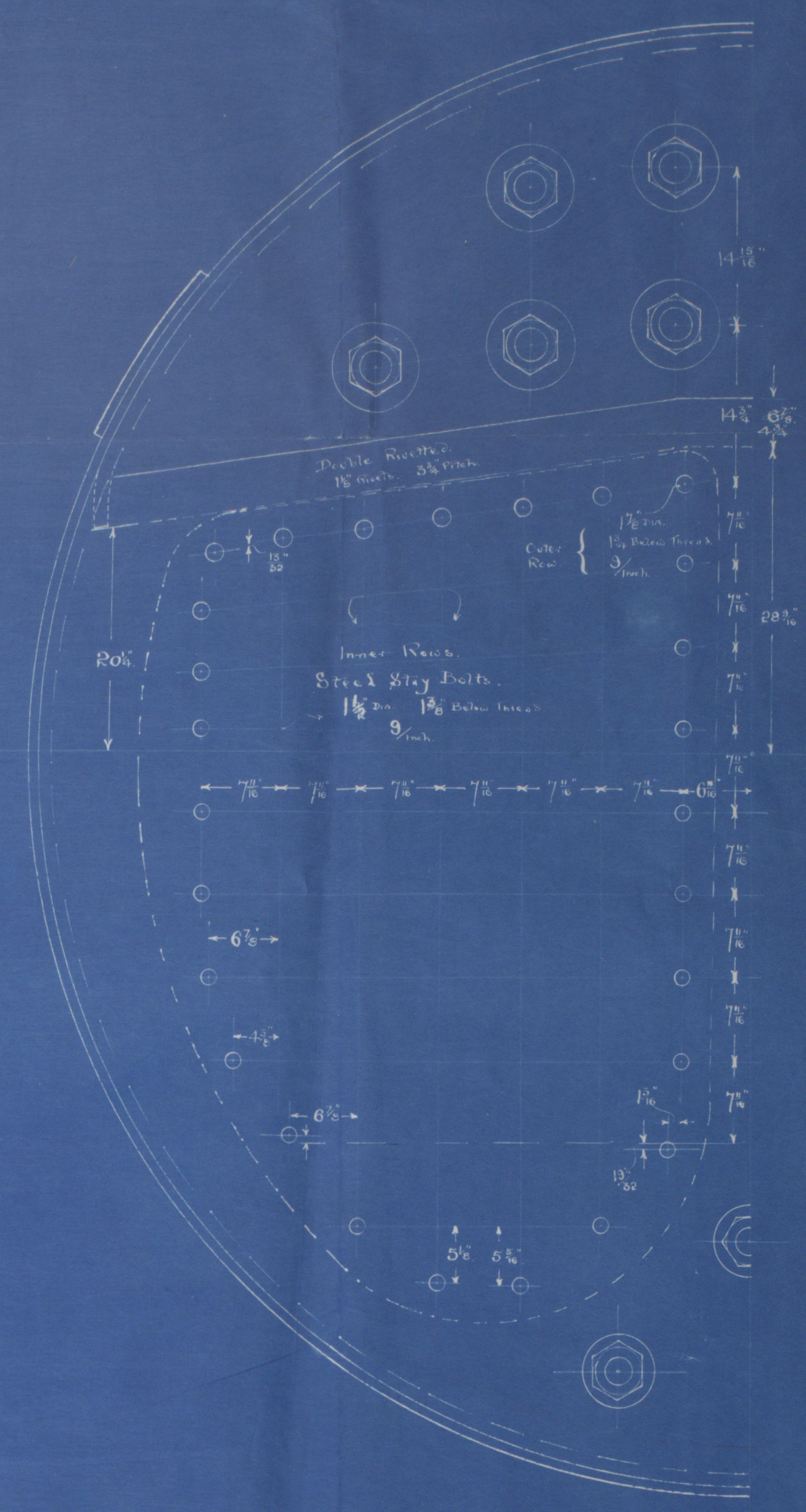
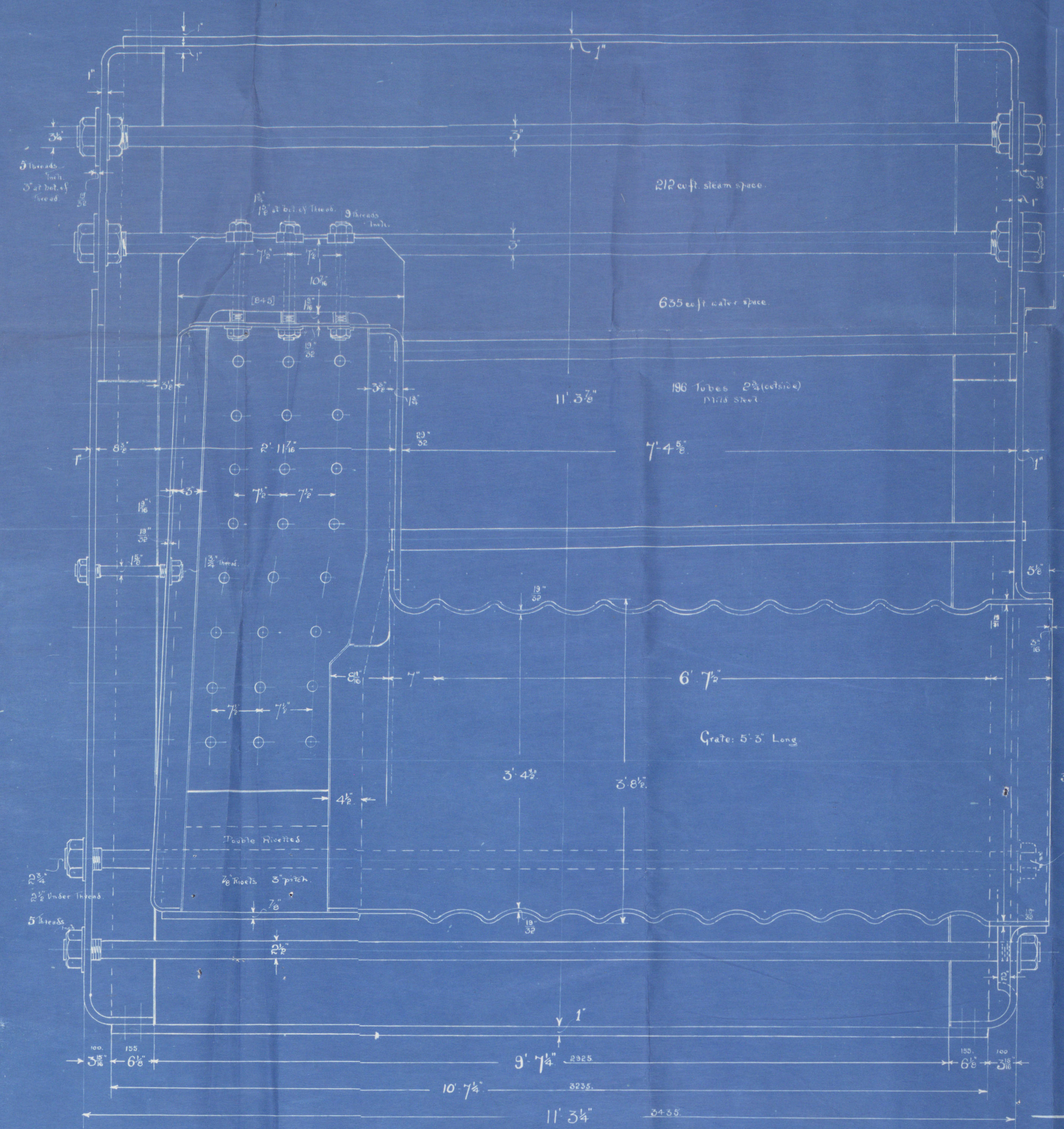
Materials: Siemens-Martin Steel for Shell	
62583 lbs minimum strength	
Shell	1"
Double Bolt Straps	1"
Rivets	Unwin's & Lyndane 1 1/2"
Strength of Seams	85%
" " Rivets	107%

Steam Pressure 175 lbs/sq in.



2 Boilers.

1/10th full size.



Vessel No 241.

1/2 Bulgarian. - ex-Otto Kallhoff.

3/11/20

Boilers

S S Bulgarian
Lon. 83 1/44.

RETAIN

RETAIN

W486-0312



© 2019

Lloyd's Register
Foundation