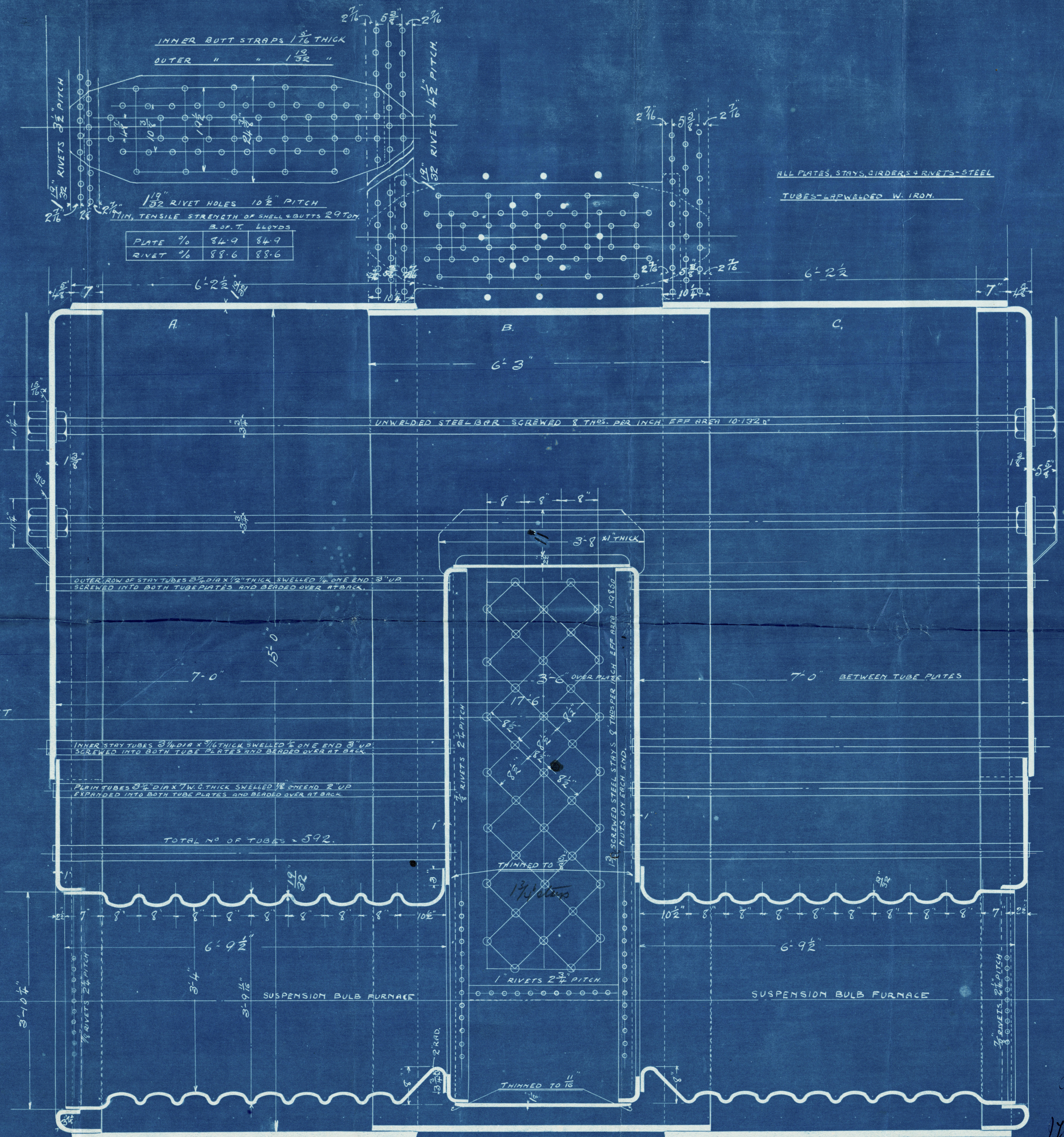
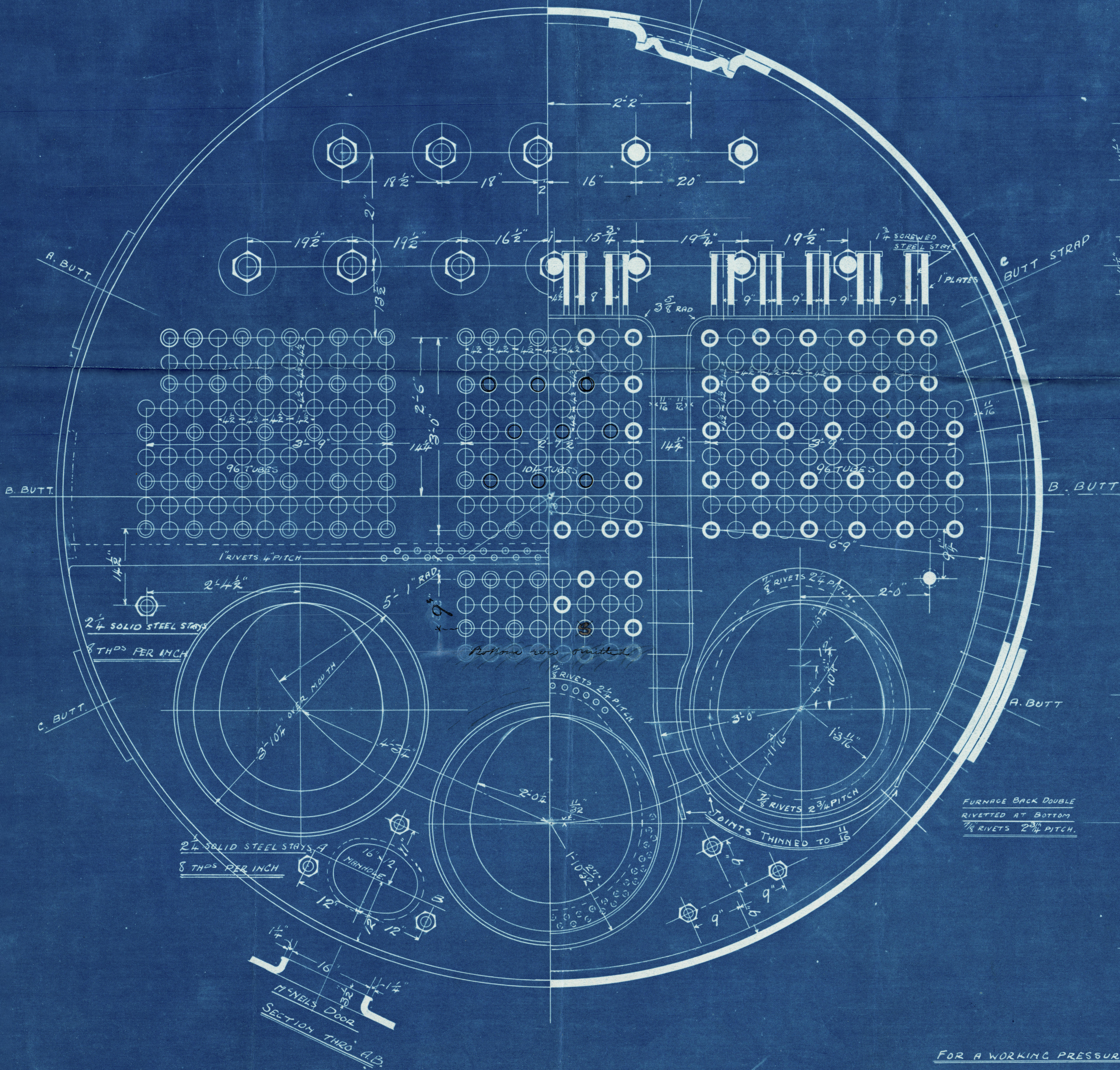
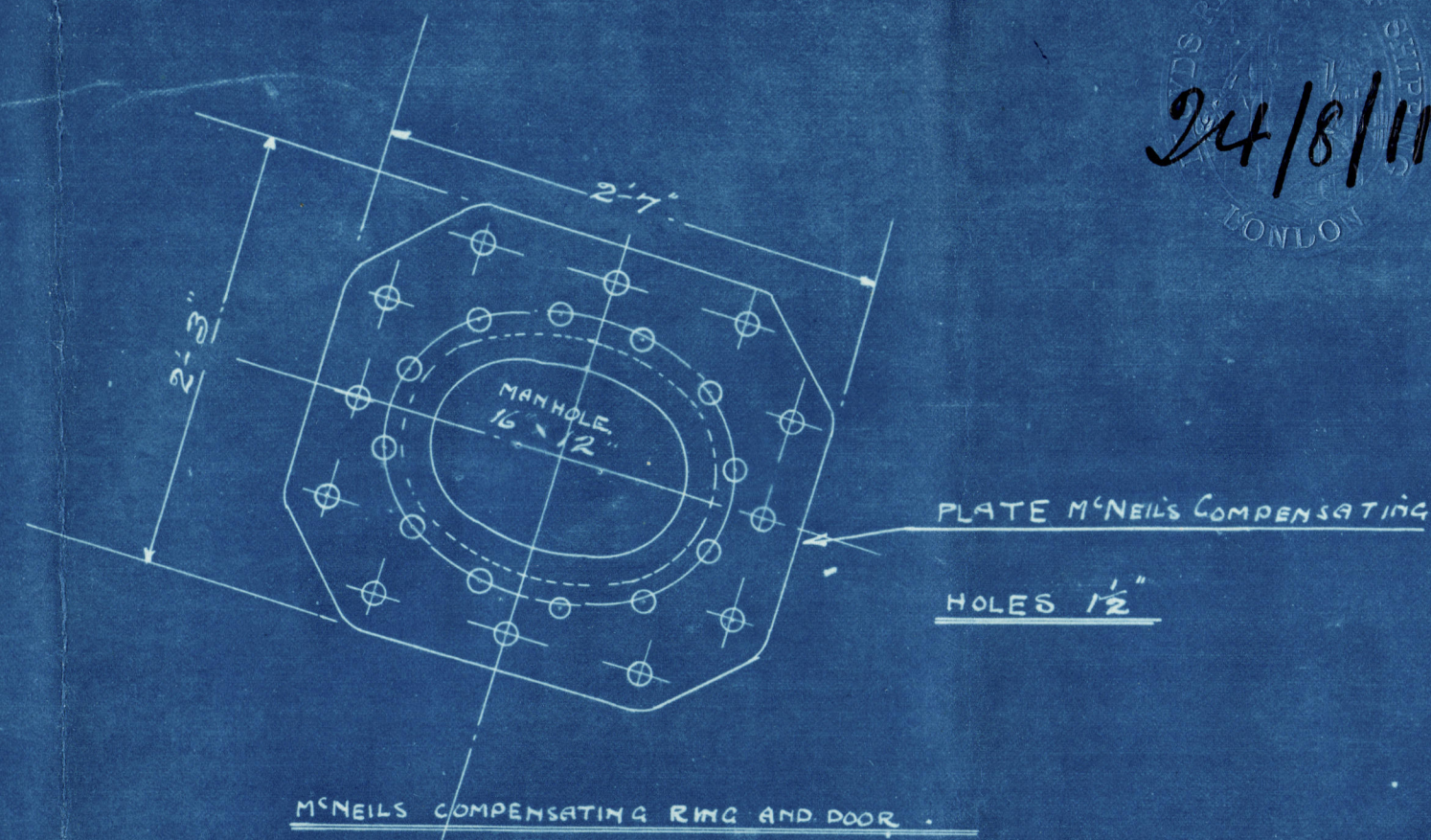
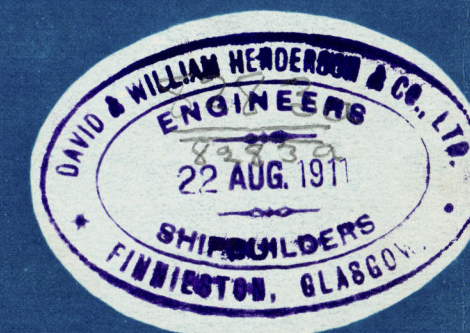


24/8/11



FOR A WORKING PRESSURE OF 215 LBS. PER SQ. INCH.
TESTED " " 430 LBS. " " "
TO PASS "B.O.T." AND LLOYDS.



2. OFF

MAIN BOILER №478

Surveyors to Lloyd's Register

D & W Henderson & Co Ltd.

Main Boilers 478.

W.P. 215 lbs. sq. in.



5/8" Benefactor"

GLASGOW REPORT No. 31511



RETAIN

RETAIN



© 2019

Lloyd's Register
Foundation

W485-0105