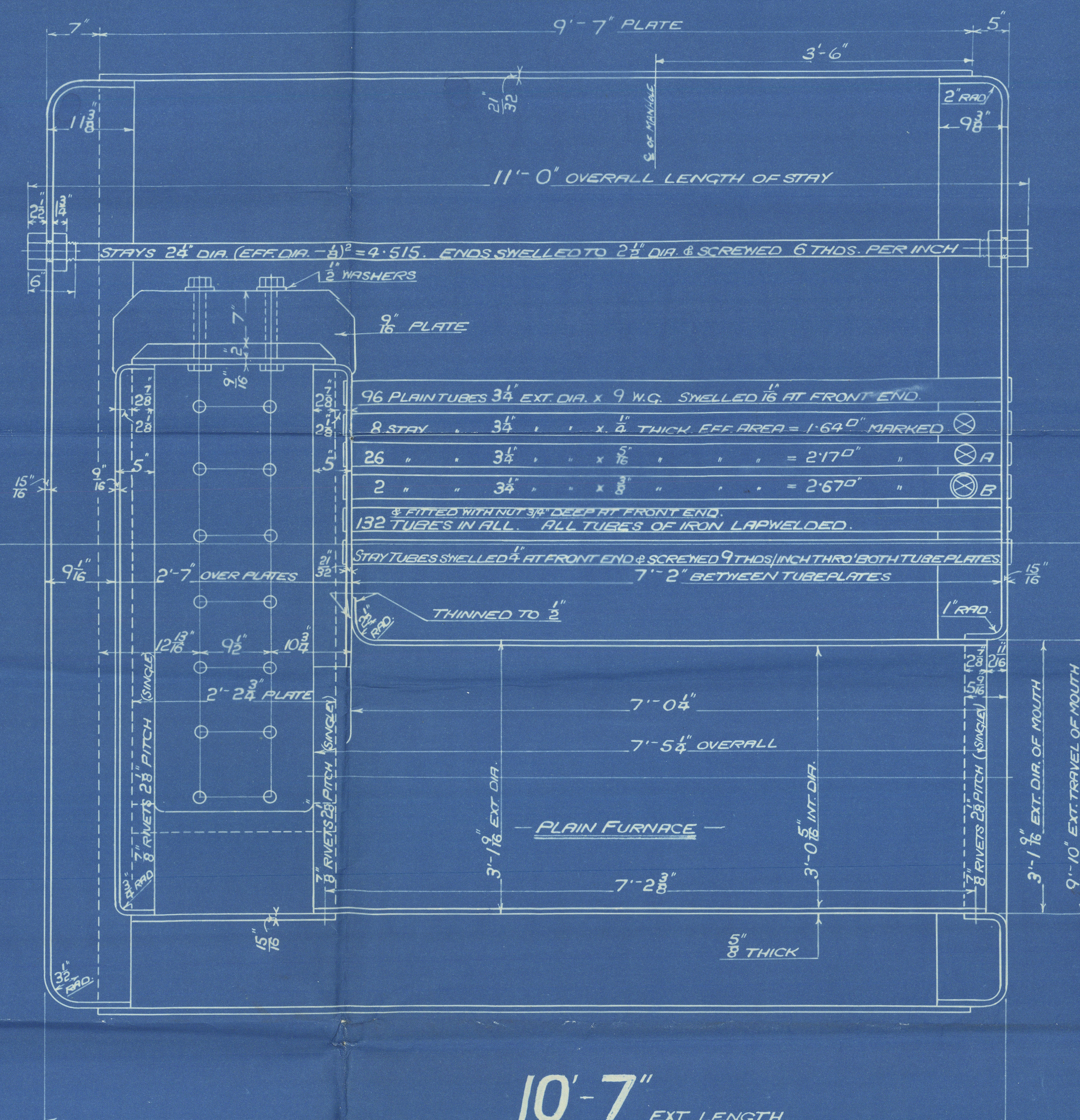
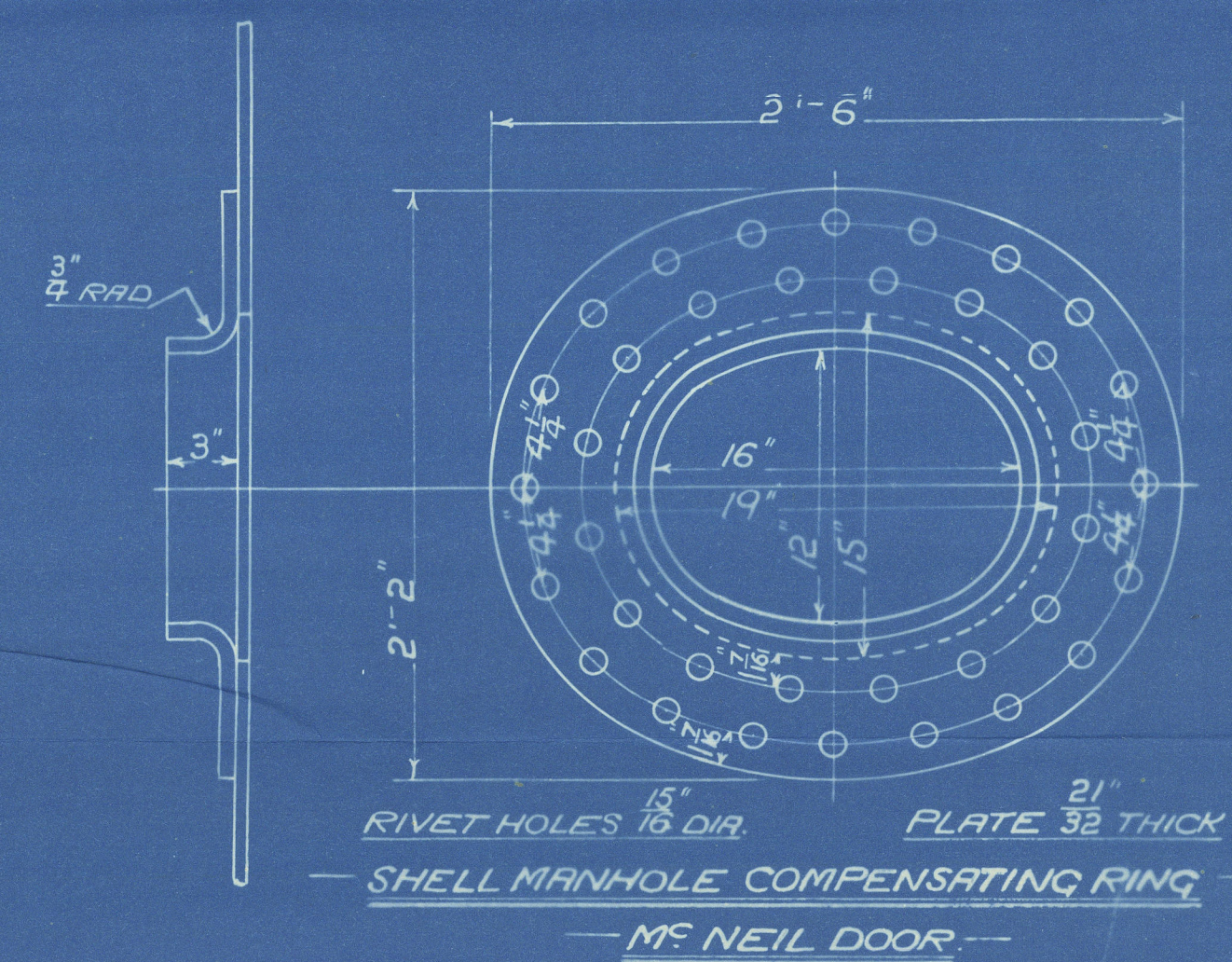


	LONG L	END CIRCUM
RIVET HOLE DIA.	15' 16	15' 16
PITCH	9 1/4	2' 8 1/16"
% PLATE	77.9	66.7
% RIVET	78.6	59.4
% COMBINED	78.1	—

—BACK END CIRCUM.—
142 PITCHES OF 2.816"

FRONT END CIRCUM. —
192 PITCHES OF 2.816"



FIREBOX STAYS—STEEL			
POSITION	MARK	DIA.	(DIA - .25) THICKS/INCH
BACK, TOP & SIDES	○	1 3/8"	1-227
" " WIDE SPACE	⊗	1 1/2"	9
" " TOP ROW	◎	1 5/8"	1-844
" " CORNER	⊗	1 1/2"	2-199

ALL FIREBOX STAYS SCREWED THRO' BOTH PLATES & NUT FITTED AT EACH END.

ALL $\frac{3}{8}$ " & $\frac{1}{2}$ " NUTS $\frac{3}{4}$ " DEEP EXCEPT ON GIRDER TOPS WHERE THE OUTSIDE NUTS ARE $\frac{1}{8}$ " DEEP.

ALL $1\frac{5}{8}$ " & $1\frac{3}{4}$ " NUTS $\frac{7}{8}$ " DEEP.

DONKEY BOILER

— ONE OFF EACH CONTIN.

~~CON^T N° 898 - 910 - 918 - 912~~

WORKING PRESSURE 120 LBS. PER SQUARE INCH.

TEST	"	230	"	"	"	"
------	---	-----	---	---	---	---

TO PASS LLOYDS SURVEY

SCALES 1' & 1/2" = ONE FOOT —



0.7134535
TIR: N° 50137

GLASGOW

DAVID ROWAN & CO. LTD

DONKEY BOILER N° 912

WP-120 LBS

DUPLICATE OF N° 898 APPD

BURNTISLAND SBC

S/S N° 156

N° 18477

LLOYD'S TEST

230 LBS

WP-120 LBS

J.C.M. 19-10-29

Brynmor
GLASGOW REPORT N° 49823

RETAIN

G

W481-0080



© 2020

Lloyd's Register
Foundation