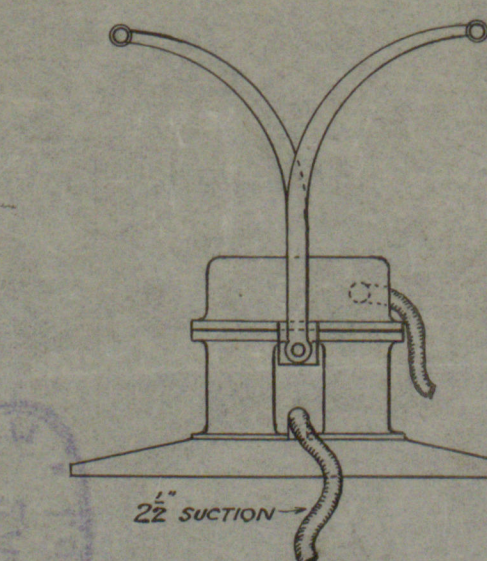
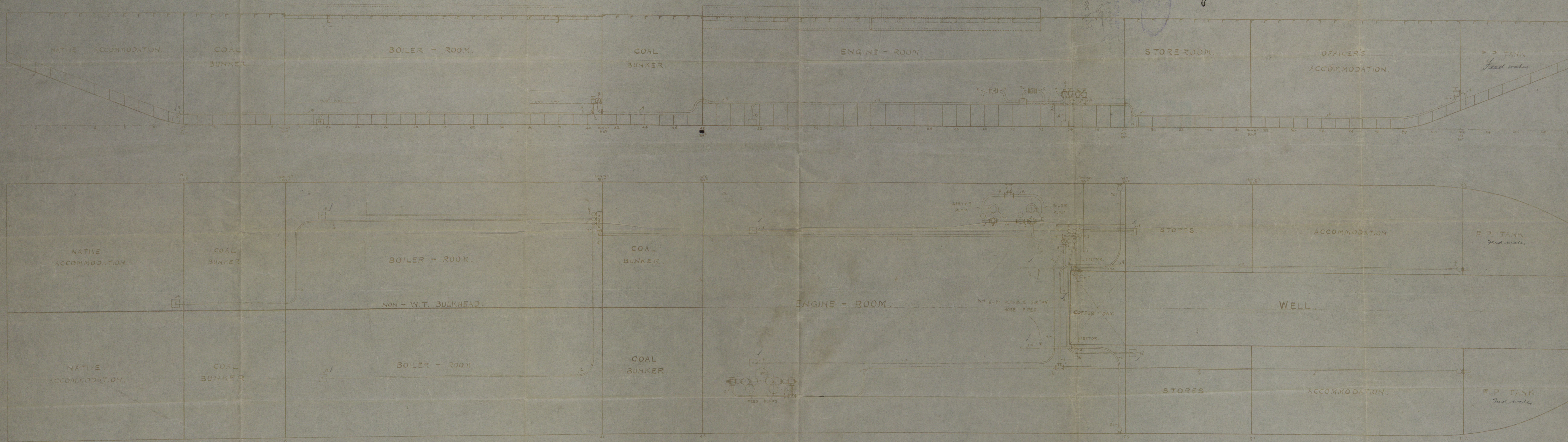


LIST OF PIPES.							
N°	PURPOSE	BORE	MATERIAL	N°	PURPOSE	BORE	MATERIAL
1	CONNECTION BETWEEN STOVE & ENG. MUDBOX	2 1/2"	LEAD	17	SECTION FROM COFFER DAM	2"	LEAD
2	SUCTION FROM AFT COMPART	2"	LEAD	18	SECTION FROM ENG. BILGES	2"	LEAD
3	DISCHARGE FROM AFT COMPART	2"	LEAD	19	SECTION FROM ENG. BILGES	2"	LEAD
4	DISCHARGE FROM AFT COMPART	2"	LEAD	20	DISCHARGE OVERBOARD	2"	LEAD
5	DISCHARGE FROM AFT COMPART	2"	LEAD	21	DISCHARGE OVERBOARD	2"	LEAD
6	DISCHARGE FROM AFT COMPART	2"	LEAD	22	DISCHARGE OVERBOARD	2"	LEAD
7	DISCHARGE FROM AFT COMPART	2"	LEAD	23	DISCHARGE OVERBOARD	2"	LEAD
8	DISCHARGE FROM AFT COMPART	2"	LEAD	24	DISCHARGE OVERBOARD	2"	LEAD
9	DISCHARGE FROM AFT COMPART	2"	LEAD	25	DISCHARGE OVERBOARD	2"	LEAD
10	DISCHARGE FROM AFT COMPART	2"	LEAD	26	DISCHARGE OVERBOARD	2"	LEAD
11	DISCHARGE FROM AFT COMPART	2"	LEAD	27	DISCHARGE OVERBOARD	2"	LEAD
12	DISCHARGE FROM AFT COMPART	2"	LEAD	28	DISCHARGE OVERBOARD	2"	LEAD
13	DISCHARGE FROM AFT COMPART	2"	LEAD	29	DISCHARGE OVERBOARD	2"	LEAD
14	DISCHARGE FROM AFT COMPART	2"	LEAD	30	DISCHARGE OVERBOARD	2"	LEAD
15	DISCHARGE FROM AFT COMPART	2"	LEAD	31	DISCHARGE OVERBOARD	2"	LEAD
16	DISCHARGE FROM AFT COMPART	2"	LEAD	32	DISCHARGE OVERBOARD	2"	LEAD



SYSTEM OF HAND PUMPING AS ARRANGED TO SUIT OWNERS
3 PORTABLE WEEGEE HAND PUMPS
WITH 2 1/2" FLEXIBLE SUCTIONS, AND OVERBOARD
DISCHARGES, AS PER SKETCH
FOR PUMPING OUT HOLDS THROUGH HATCHES.

19/4/13



BILGE

PUMPING

ARRANGEMENT

N° 773.

SCALE $\frac{1}{4}$ " = ONE FOOT.

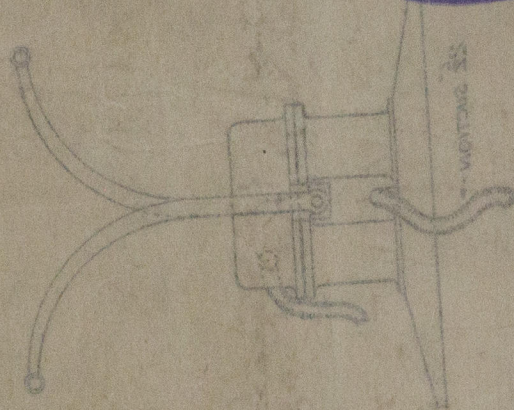
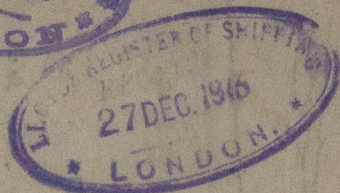
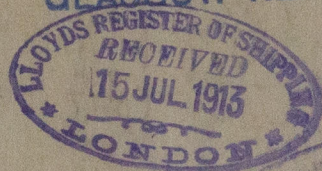
LOWRITZ & CO. LONDON
No. 773
Drawn by J. Campbell
Checked by H. S. A.
DATE 8 July 1913.

16.7.13

Lobnitz & Co. No 773.

Pumping "Plan Lynn"

GLASGOW REPORT No. 33440



100's pumping out holes through various
discharge at the surface
with 8 1/2" vertical suction and overboard
3 bolsters, needed hand pump
system or hand pumping as suggested to suit

W486-0037



© 2020

Lloyd's Register
Foundation