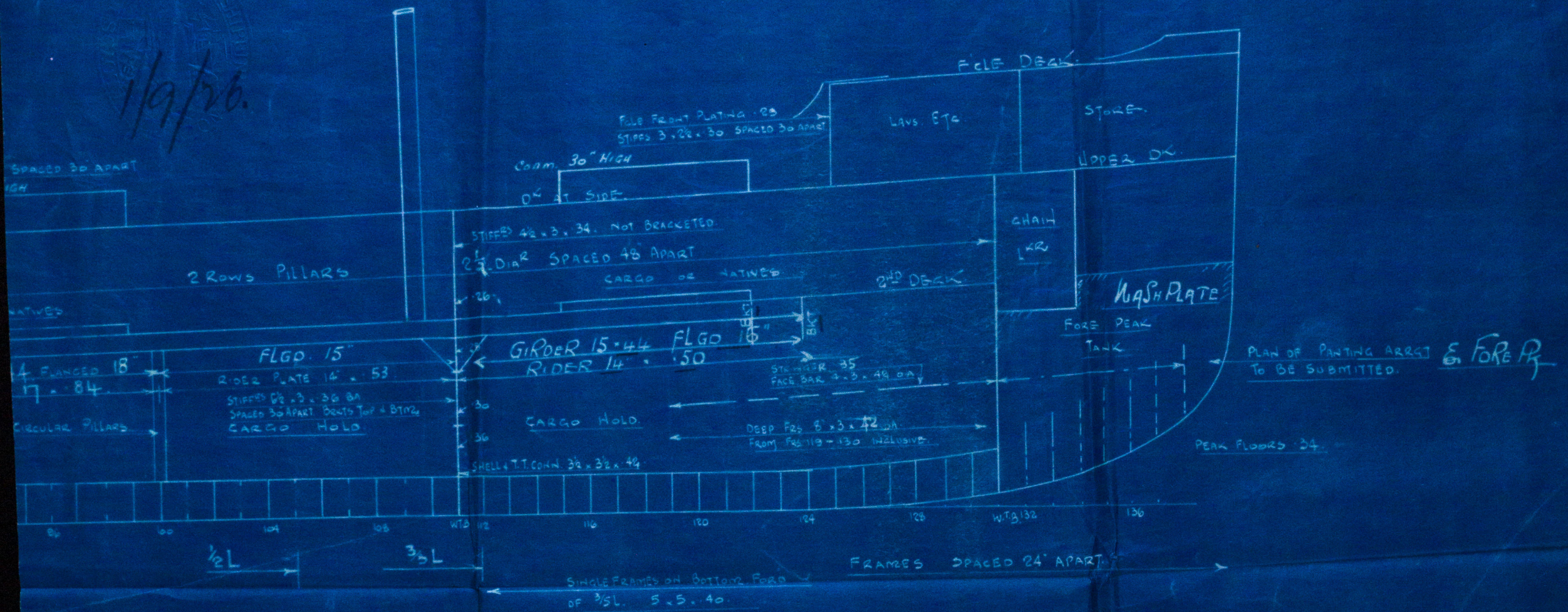
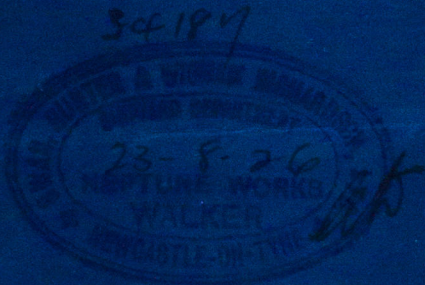


1/9/26

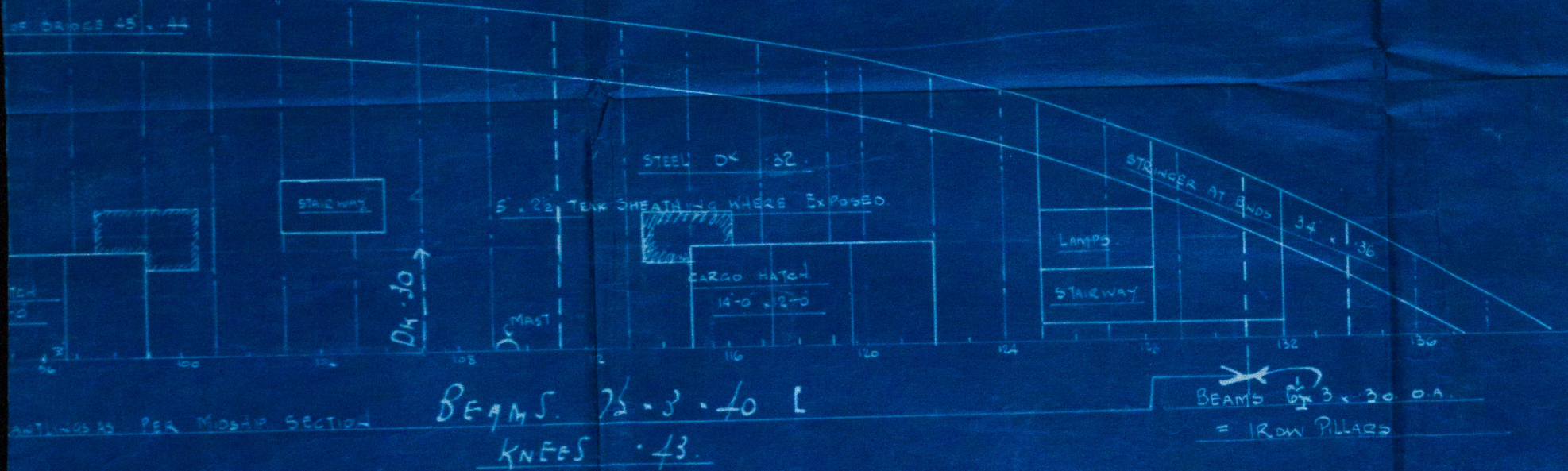
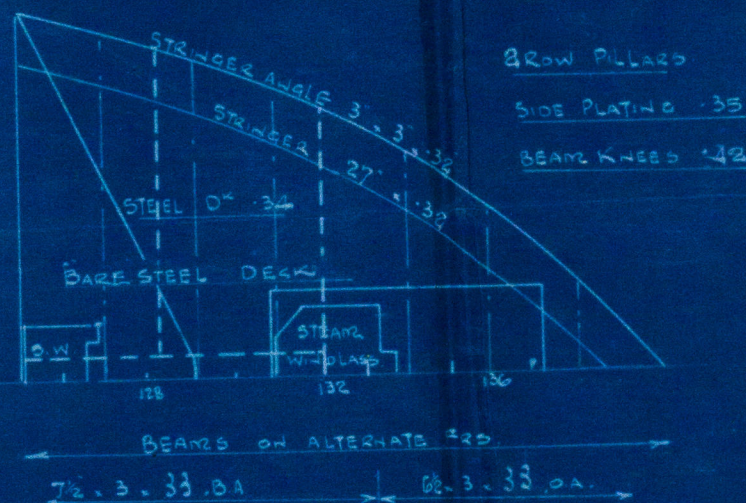


1230

SKETCH SHOWING PROPOSED
AMENDMENT OF 2ND D^{CK} GIRDER IN
FOREMOST HOLD, DISPENSING WITH PILLAR
SCALE 1/8" = 1 FOOT



FORECASTLE D^{CK}



2ND DECK

STIFFS 35" x 3 x 48" O.A.

BEAMS BELOW CHAIN LRS

bbf
1-9-26



10-0-0

10-0-0

10-0-0

Messrs Swan Hunter & Wigham Richardson Ltd.

No 1230

Amendment to 2nd Deck Index at the end.

No 11A

S. S. Juna
NEWCASTLE ON TYNE.

Report No. 81484.

1230

Amendment to 2nd Deck Index

© 2020



Lloyd's Register
Foundation

W48-0156