

# S.S. "JESSIE MÆRSK". PART STERNFRAME

TO LLOYDS +100A1 CLASS

VESSEL BUILT SCHEEPSWERF & MACHINFABRIEK. AMSTERDAM 1920.

ORIGINAL POST --- CAST STEEL

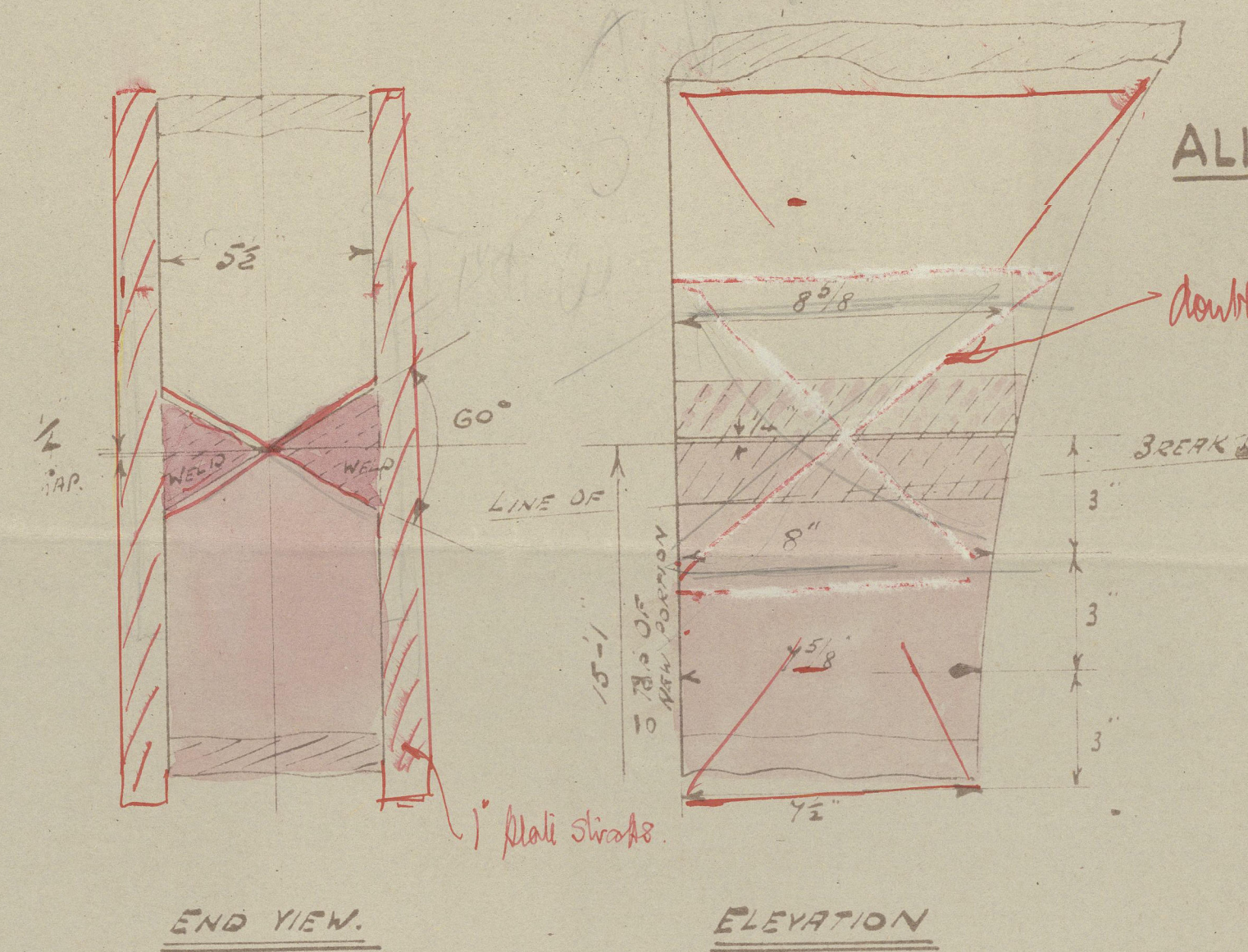
NEW PART POST --- FORGED SCRAP IRON

RUDDER STOCK ~~1/2~~ DIA<sup>8</sup>

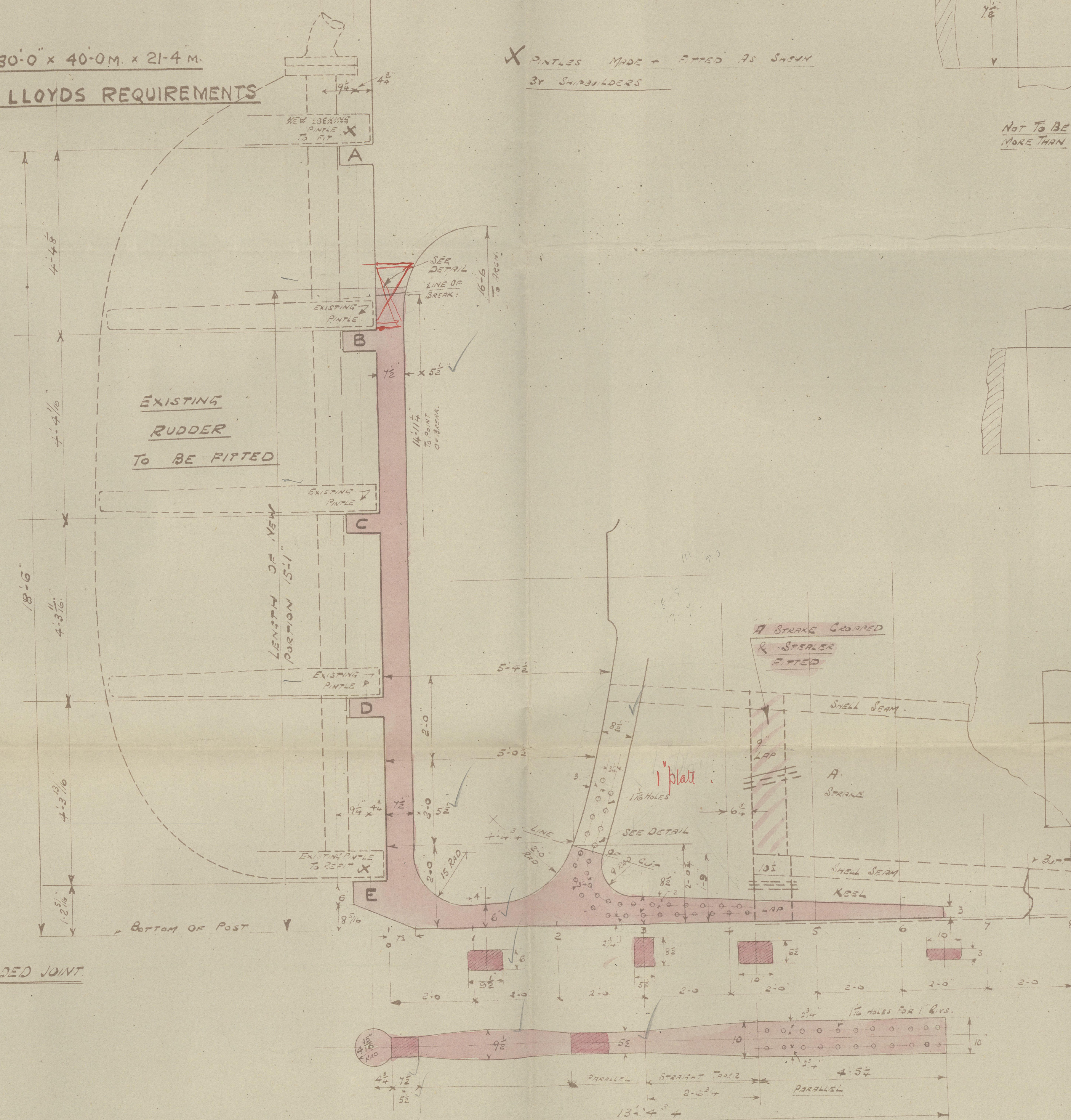
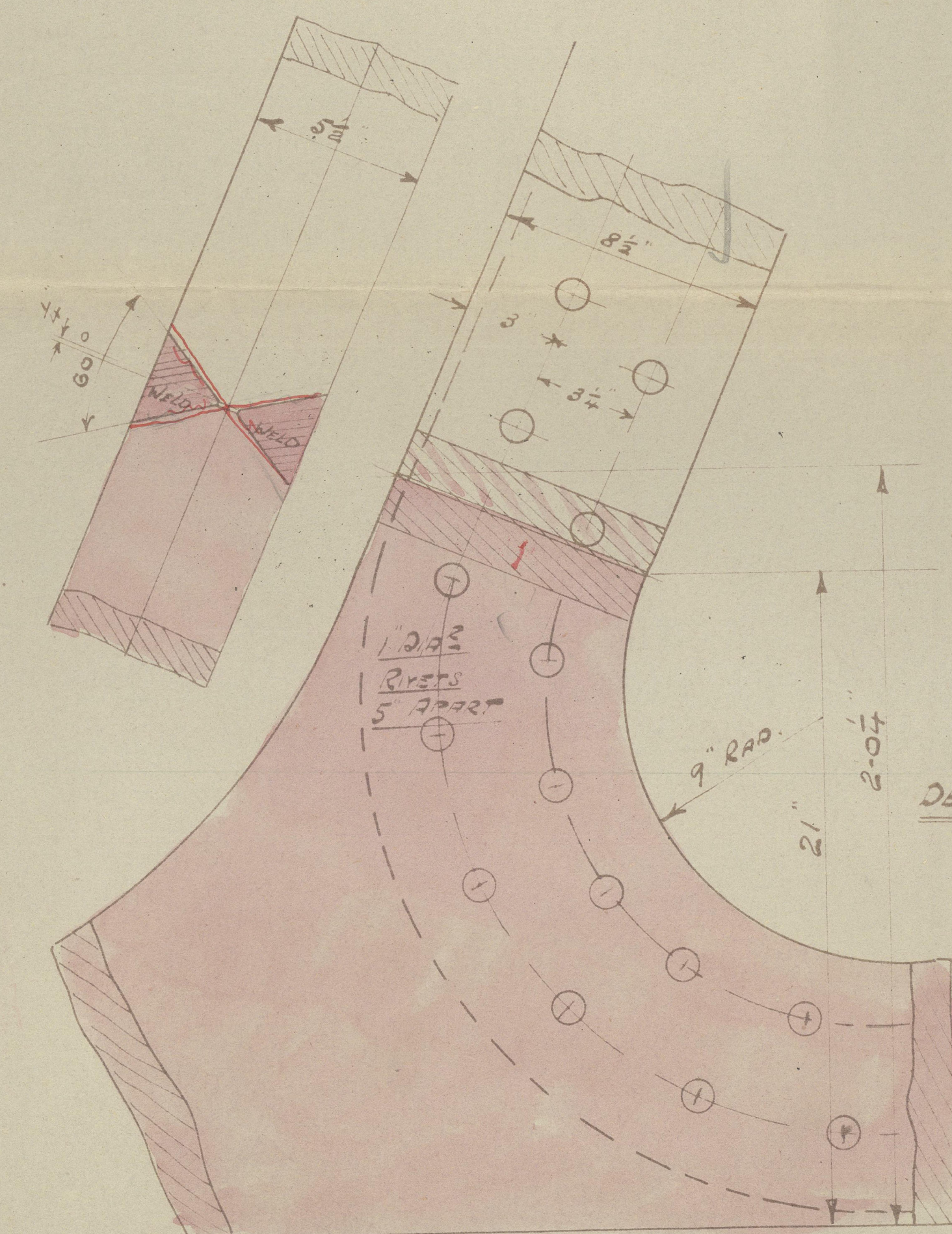
SCALE  $\frac{3}{4}$ " TO 1 FOOT  
DETAILS 3" TO 1"

DIMENSIONS 280'0" x 40'0" x 21'4"

ALL WELDING TO LLOYDS REQUIREMENTS

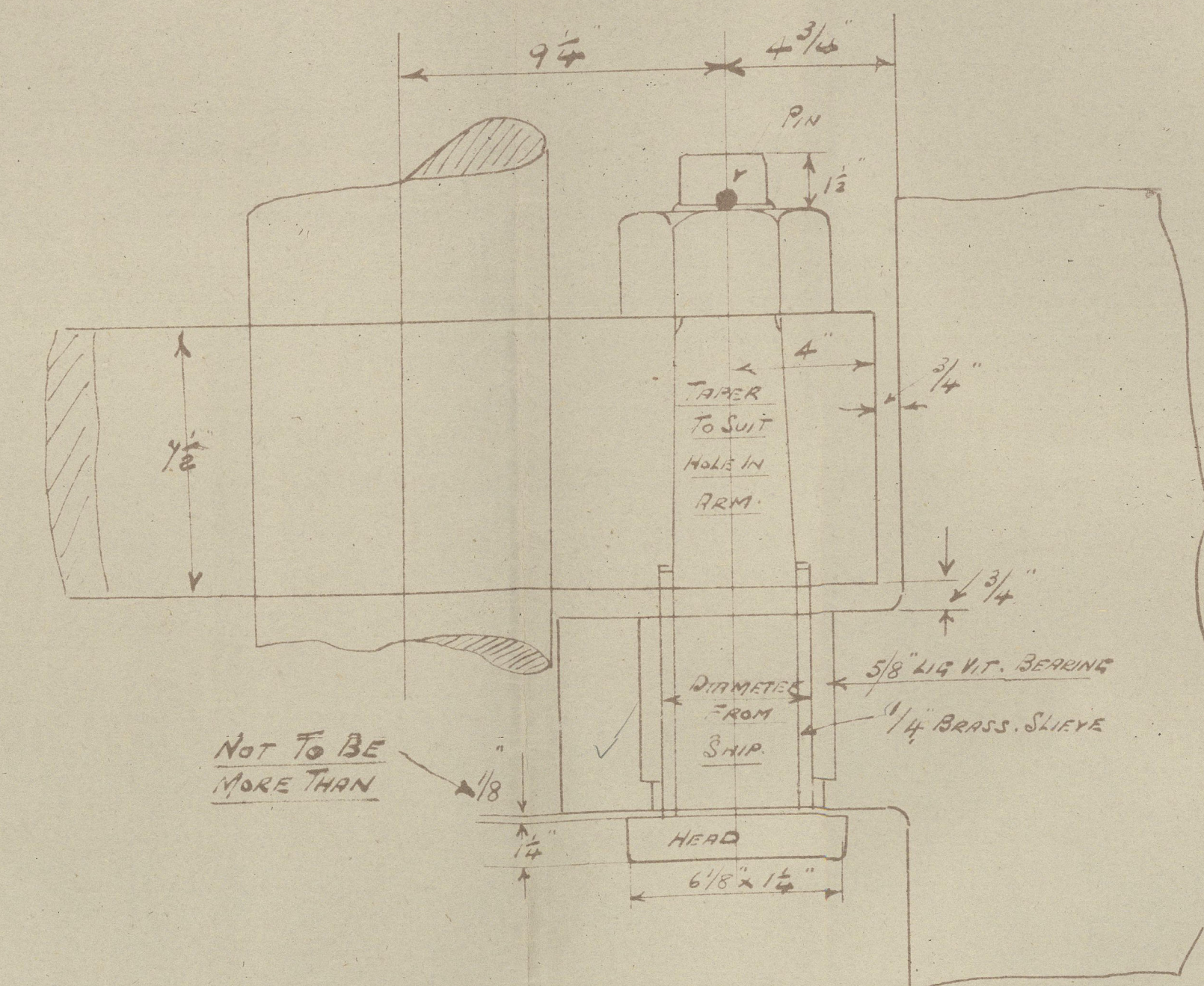


DETAIL OF UPPER WELDED JOINT  
RUDDER POST

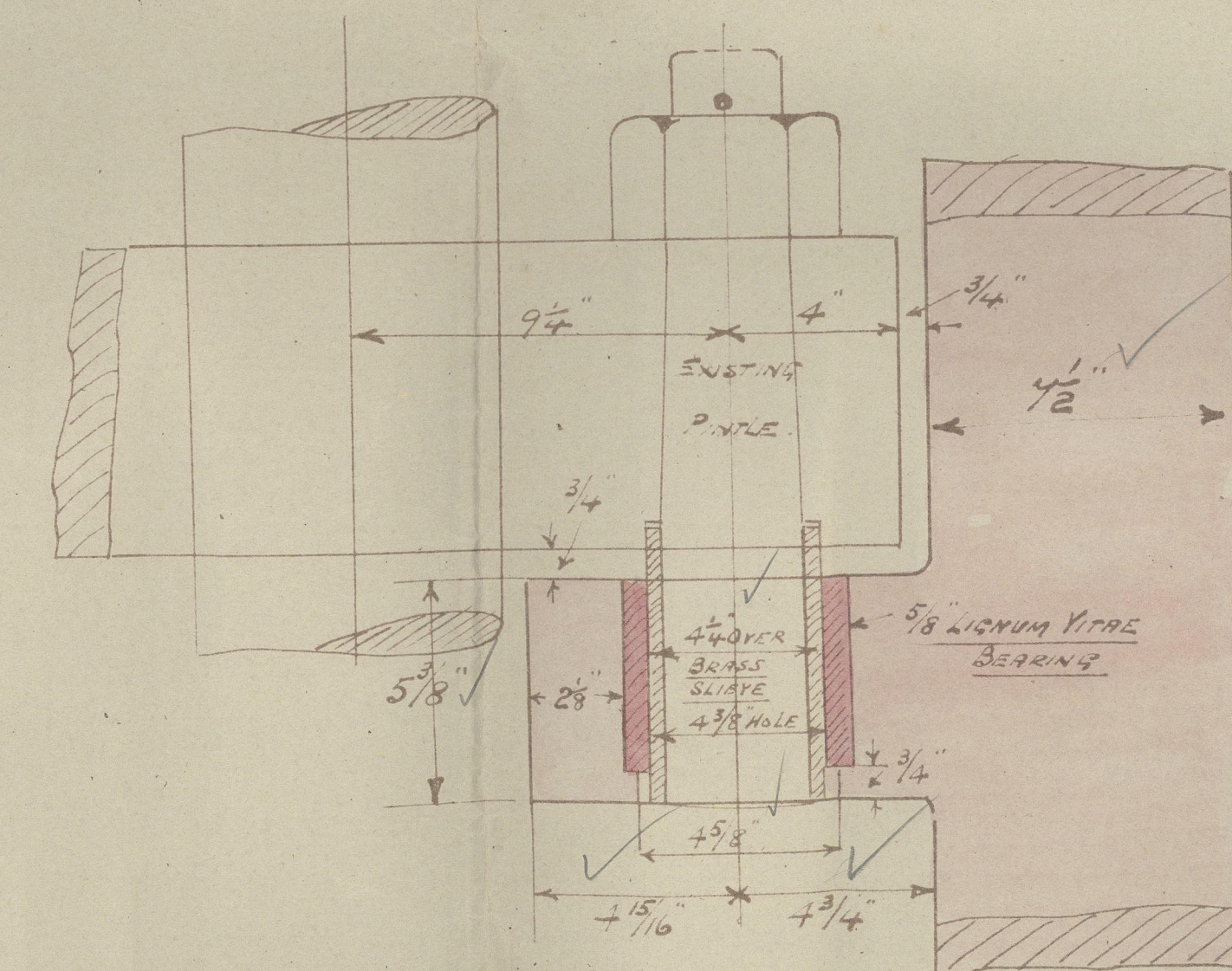


PART NEW STERNFRAME TO BE SUPPLIED  
AS PER DRAWING & TEMPLATE SUPPLIED BY  
SHIPBUILDERS  
3 TYPE JOINTS WELD FOR HEADING  
GUDGEONS BORED TRUE FOR LINES - 1/4 INCH WISE  
BUSHES FITTED  
CYCLES BORED IN STEEL AS PER DRAWING

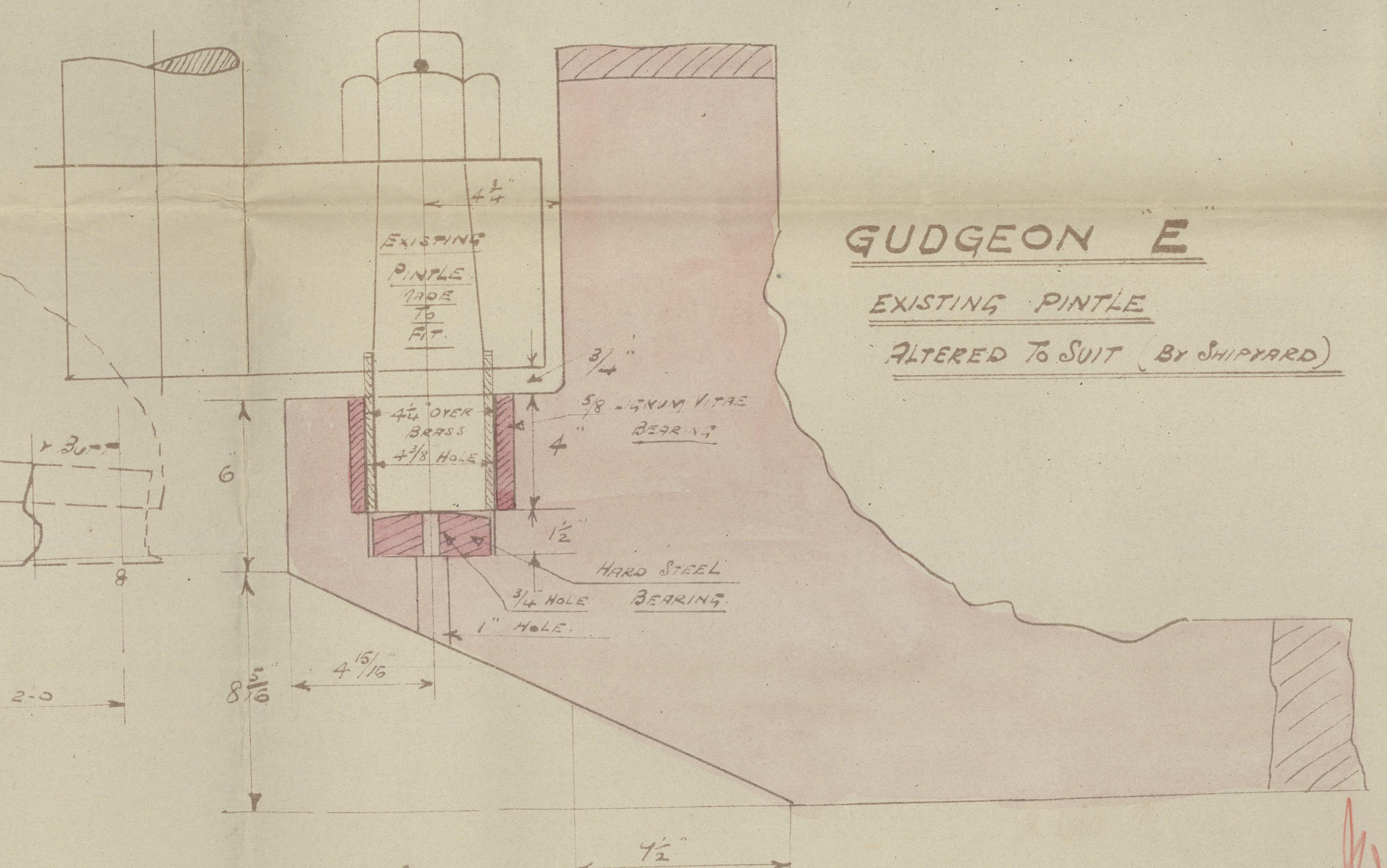
X PINTLES MADE & FITTED AS SHOWN  
BY SHIPBUILDERS



GUDGEON A  
EXISTING GUDGEON  
NEW LOCKING PINTLE  
MADE BY SHIPYARD



GUDGEONS B, C & D  
EXISTING PINTLES



GUDGEON E  
EXISTING PINTLE  
ALTERED TO SUIT (BY SHIPYARD)



"JESSIE MAERSK"

---

Part stern frame

---

W.Hpl. 18336.

W48-0121



© 2020

Lloyd's Register  
Foundation