



SUNDERLAND ENGINE WORKS

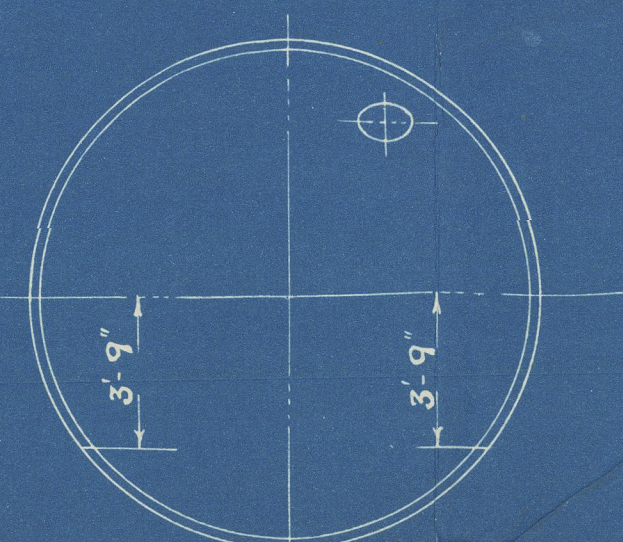
BOILER

TRACING 2572

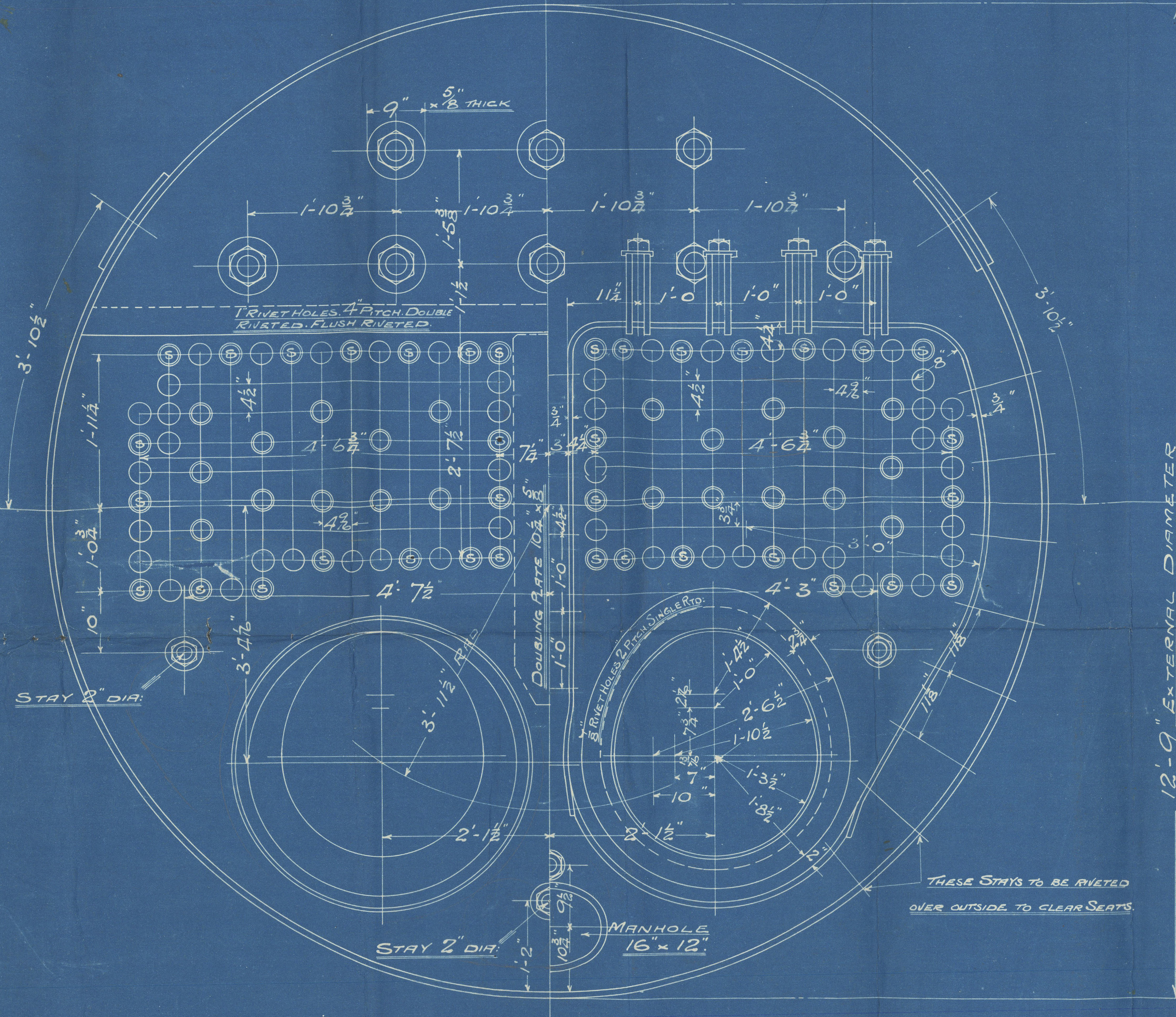
SCALE - 1 INCH TO A FOOT

SCHEDULE "L"

WRITTEN DIMENSIONS ONLY TO BE TAKEN



POSITION OF MANHOLE ETC.
LOOKING ON BOILER BACK.



THESE STAYS TO BE RIVETED
OVER OUTSIDE TO CLEAR SEATS

12'-9" EXTERNAL DIAMETER

RIVET HOLES 1/8" DIA.

PLATE 1" THICK

RIVET HOLES 1/8" DIA.

PITCH = 8 3/16"

PLATE SECTION = 86.8%

RIVET " " = 86.34%

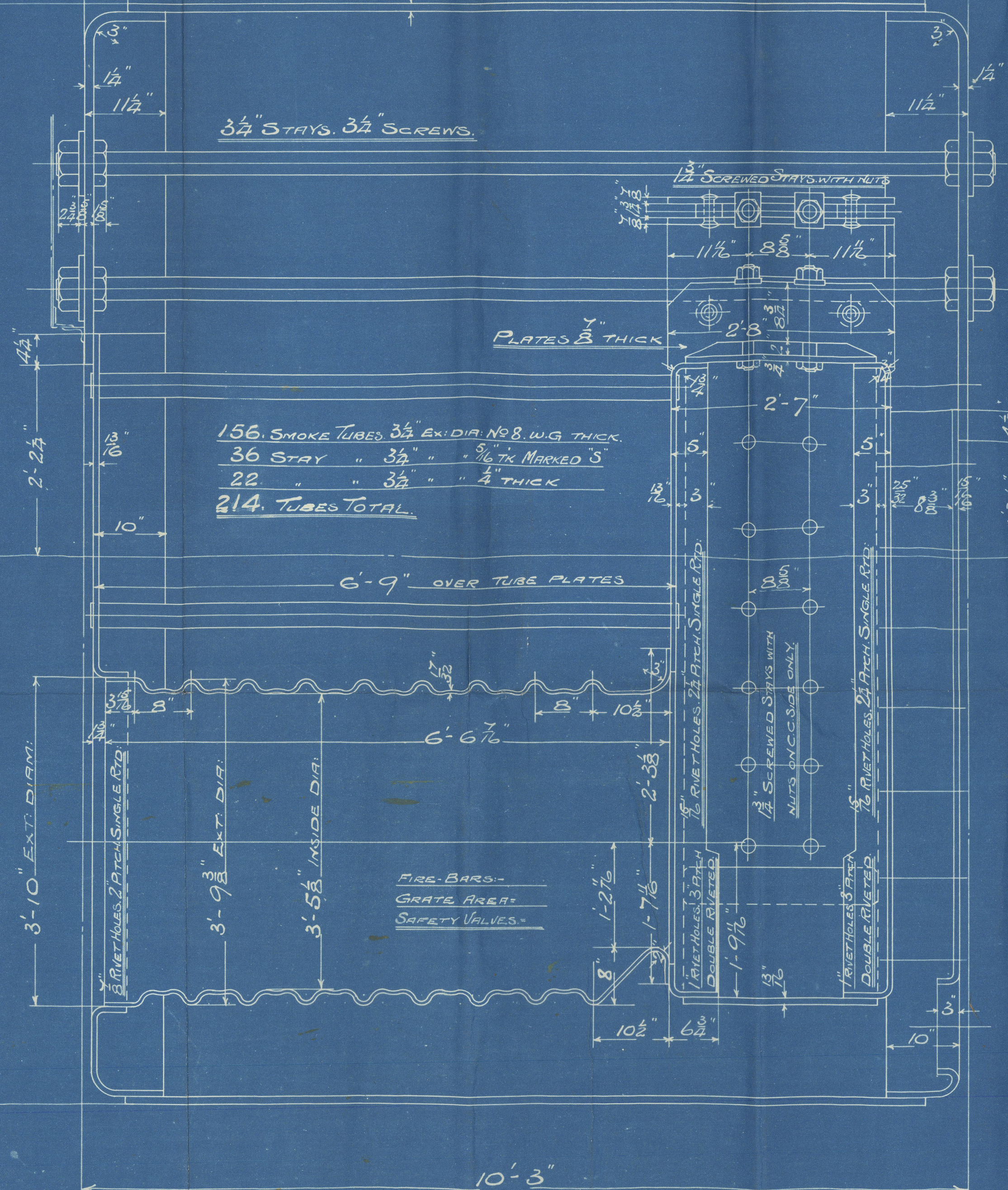
11 PITCHES @ 8 3/16" = 7'-10 3/8"

BUTT STRAPS
INSIDE 1" THICK
OUTSIDE 1" THICK

ALL RIVETS TO BE PUT IN
FRONT END OF BOILER

EVERY ALTERNATE RIVET TO BE LEFT OUT
OF INSIDE ROW FOR 3" CIRCUM. TOP OF BOILER
ALL RIVETS TO BE PUT IN FOR 3" CIRCUM.
BOTTOM: - AT BACK END OF BOILER.

RIVET HOLES 1/8" DIA.



156 SMOKE TUBES 3 3/4" EX. DIA. NO. 8 W.G. THICK.
36 STAY " 3 3/4" " 3/16" TH. MARKED 'S'
22 " " 3 3/4" " 1/4" THICK
214 TUBES TOTAL

FIRE BARS -
GRATE AREA -
SAFETY VALVES -



MANHOLE
16" x 12"

TO PASS "NORSKE VERITAS" SURVEY.

SHELL	22.58 (15.2) 86.34	= 180.7 LBS PER.
WORKING PRESSURE	= 180	" " "
TEST	= 360	" " "
HEATING SURFACE ON TUBES	= 1230	SQ. FT.
" " OTHER PARTS	= 316	" " "
" " TOTAL	= 1546	" " "
Ex: FRONT TUBE PLATE	= 1516	" " "
EFFECTIVE AREA OF STAYS		
3 3/4" STAY TUBES 3/16" TH. 9 THREADS PER INCH	= 217	SQ. INCHES
3 3/4" " 1/4" " " " " "	= 164	" " "
3 3/4" MAIN STAYS 6 " " " "	= 724	" " "
2" " 6 " " " "	= 251	" " "
2" SCREWED " 11 " " " "	= 279	" " "
1 1/2" " 11 " " " "	= 243	" " "
1 1/2" " 11 " " " "	= 21	" " "
ALL PLATES, RIVETS, & STAYS - STEEL		
TUBES - WROUGHT IRON		
HOLES TO BE DRILLED IN PLACE AFTER BENDING		
TENSILE STRENGTH OF SHELL PLATES, NOT LESS THAN 28,000 LBS.		
" " MAIN STAYS	= 28	" " "
" " GIRDER PLATES	= 28	" " "

DRAWN BY J.A.S.
CHECKED BY -
TRACED BY J.A.S.
CHECKED BY -
TRACING No. 2572

S.S. "KALUA" EX "DACAPO"

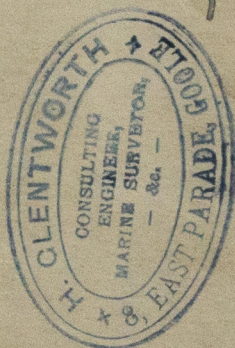
CONTRACT 1824.1 OFF

Main Boile

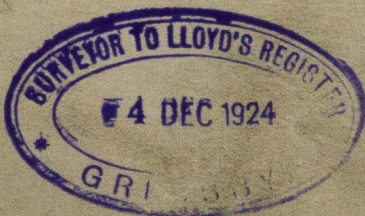
P. P. KALUA
ex. (DACA PO)

No 73865. RR.

Gms. 14237.



Gms. Office



© 2020

W48-0088

Lloyd's Register
Foundation