

Certificate of Freeboard:

Classification Society: *Lloyd's Register of Shipping*
Name: *"Pangan"* Gross Tonnage: *3487*
Port: *Copenhagen* Year when built: *3-1909*
Agent: *Det Østasiatisk Komp.* Class: *100 A1-Awing. Deck with freeboard.*
Type: *Awing Deck.*

Freeboard in fresh water *6 ft. 10 1/2 in. = 2095 mm* below the edge of the statutory deck line

Freeboard in tropical seas *7 ft. 0 in. = 2134 mm* below the edge of the statutory deck line

Freeboard (centre of disc) *7 ft. 3 1/2 in. = 2222 mm* below the edge of the statutory deck line

Freeboard *7 ft. 7 in. = 2311 mm* below the edge of the statutory deck line

Freeboard in north Atlantic *7 ft. 9 in. = 2361 mm* below the edge of the statutory deck line.

Statutory deck line is ~~to be~~ marked in accordance with *British*

of Trade's freeboard tables: - 1 3/4 inches -

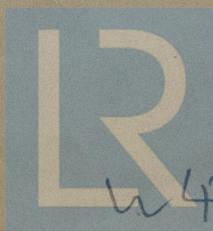
above iron Awing Deck at side.

This is to certify that the freeboard of the
Steamer "*Pangan*" of Copenhagen, *3487* Tons has been marked
2224
the vessel's sides in accordance with the above.

Copenhagen, 15th July 1915.

A. C. F. F. F.

SURVEYOR TO LLOYD'S
REGISTER OF SHIPPING



© 2019

Lloyd's Register
Foundation

W 479-0136

Bridge House? Has the Bridge House an efficient Bulkhead at the fore end?

for closing the openings in Bulkhead

ridge Front plating? 32 and Coaming plate? 18 x .42

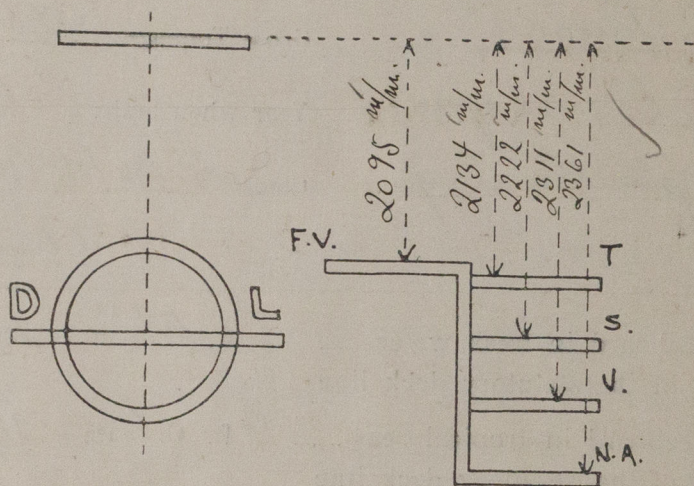
the St

h end of

ent Iron

h as the

ings co



This is to certify that the freeboard of the
of Copenhagen, 3437 tons has been marked
3334
vessel's sides in accordance with the above.
Copenhagen, 18th July 1916.



© 2019

Lloyd's Register
Foundation

Received by me

Send afterwards