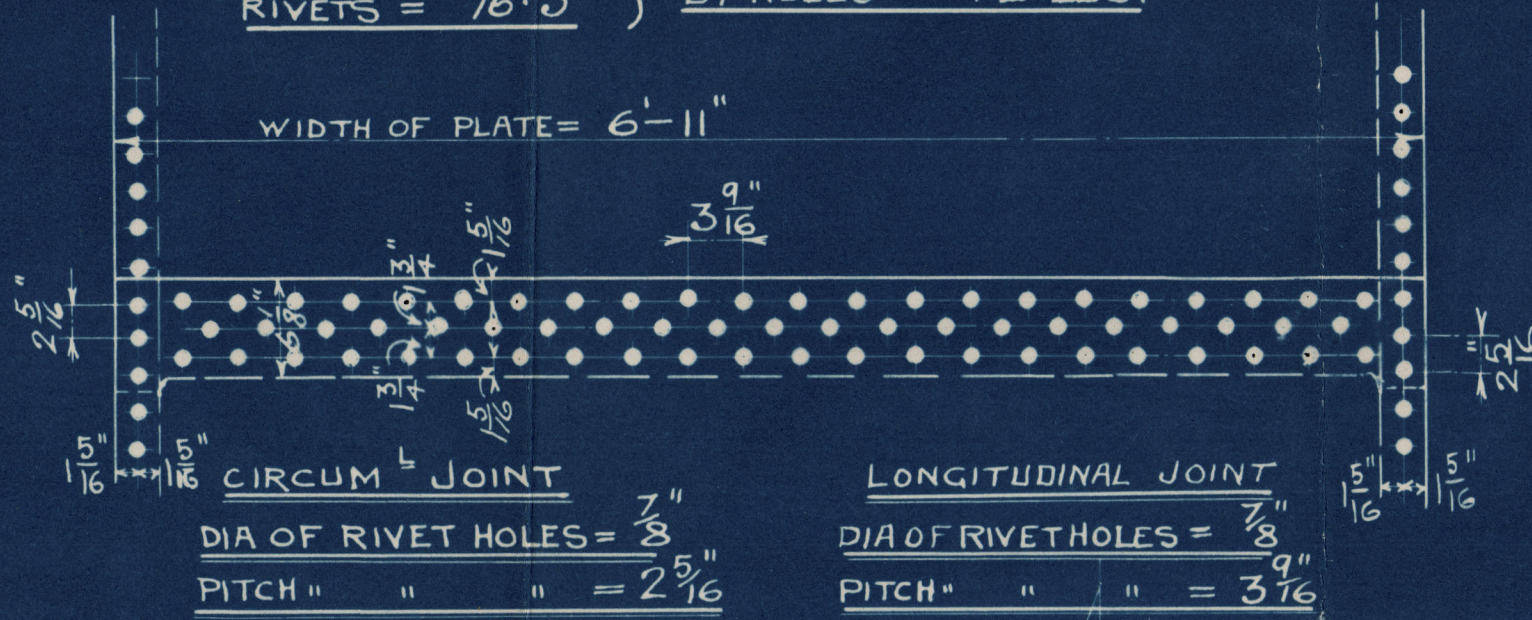


12:40:05
LLOYD'S REGISTER OF SHIPPING
LONDON

TENSILE STRENGTH OF SHELL PLATE AND MANHOLE RING 28 3/4 TO 32 TONS

"	"	"	OTHER PLATES	26	"	30	"
"	"	"	LONGITUDINAL STEEL STAYS	27	"	32	"

PLATE = 75.5% } WORKING PRESS OF SHELL
RIVETS = 76.3 } BY RULES = 92 LBS.



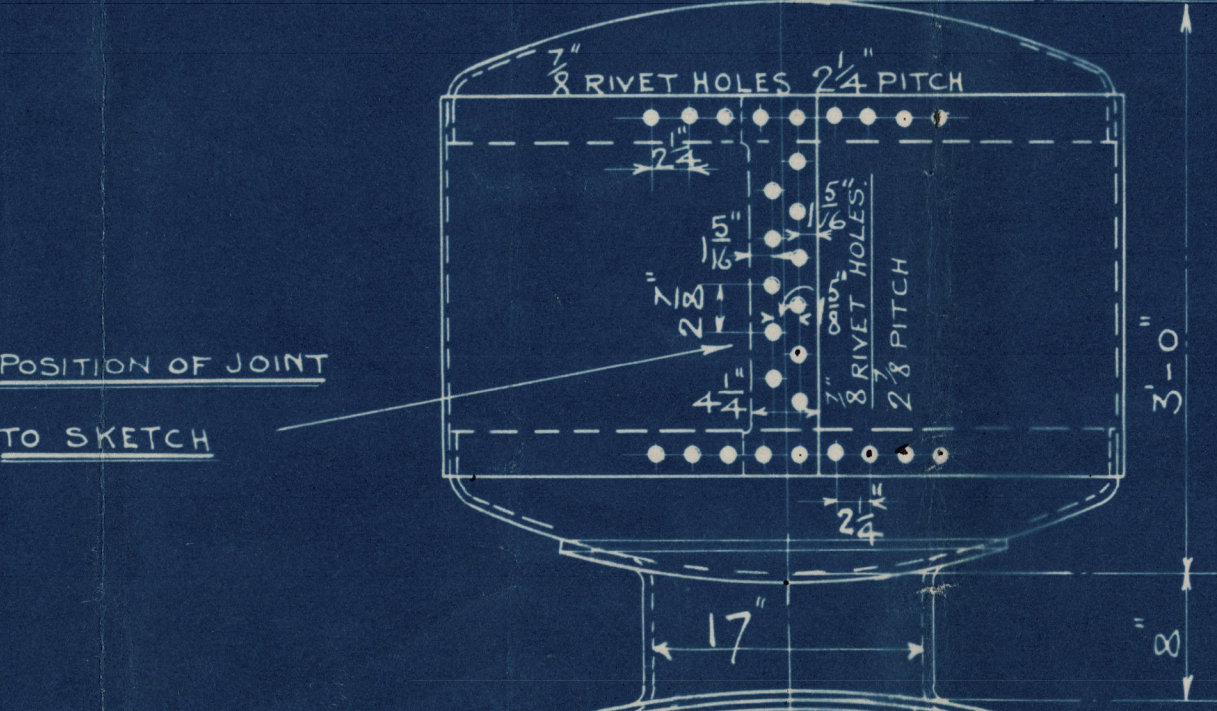
HEATING SURFACE = 697 ft²

GRATE SURFACE BARS =

WORKING PRESSURE 80 LBS PER SQ INCH

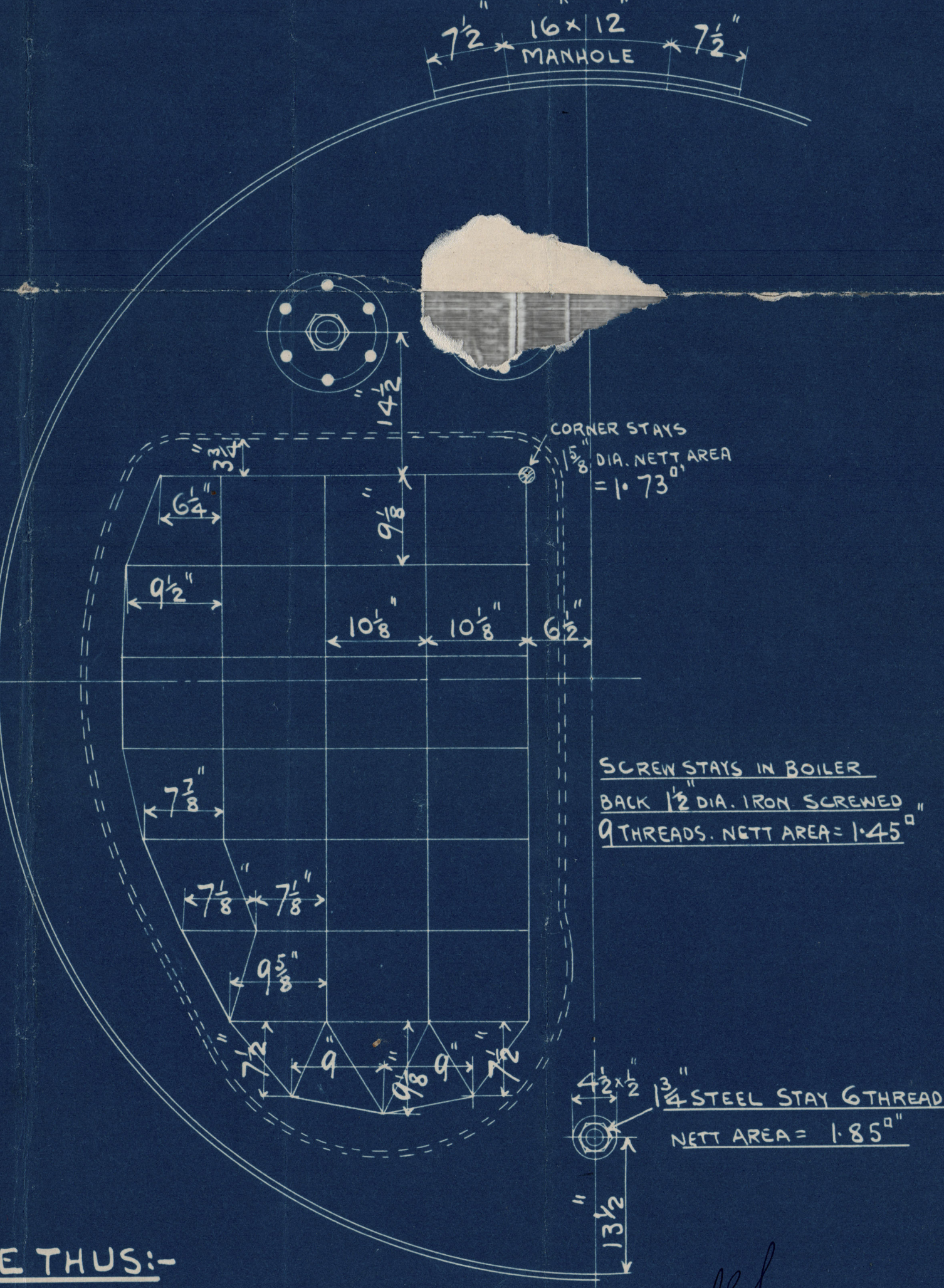
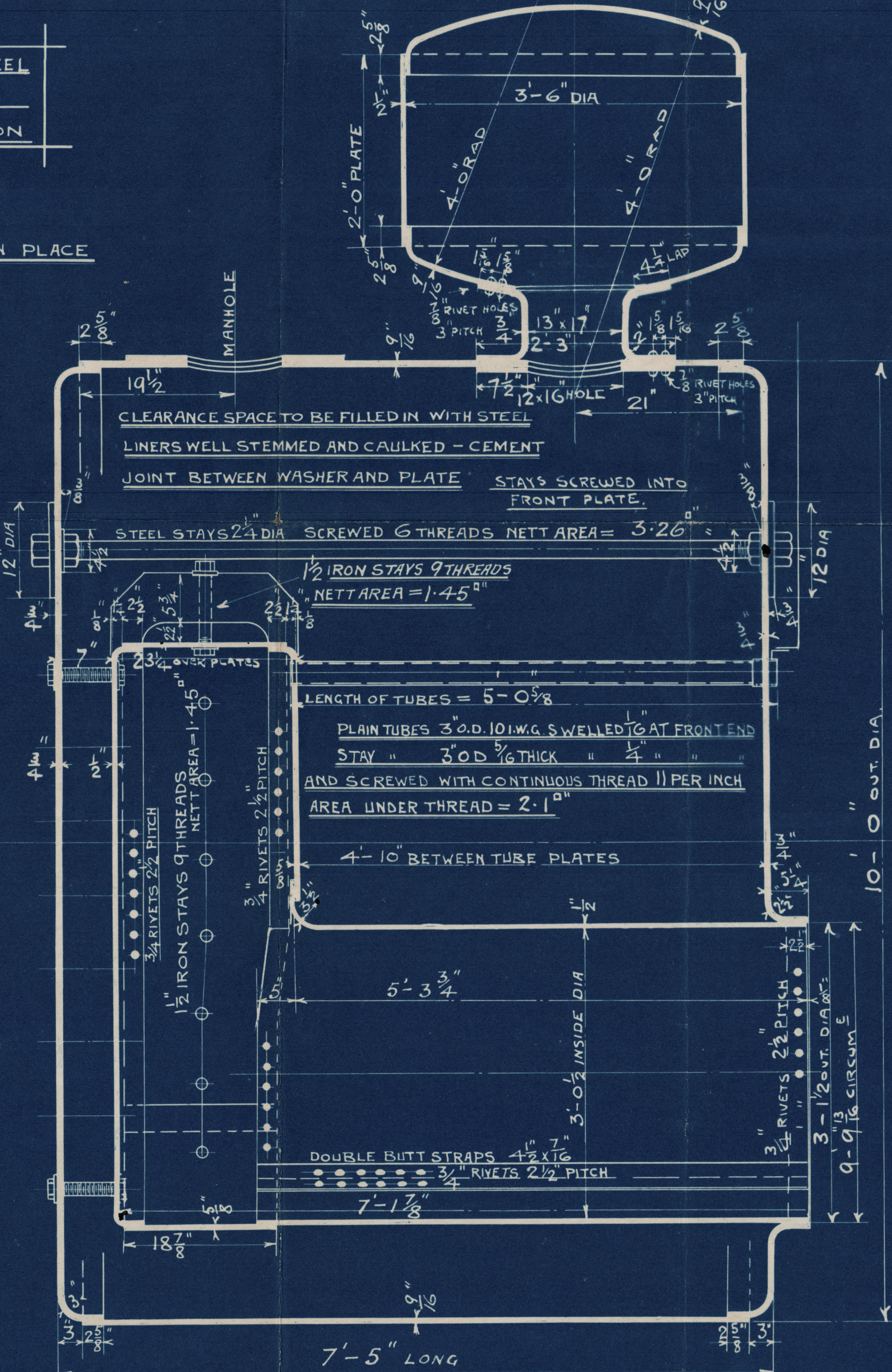
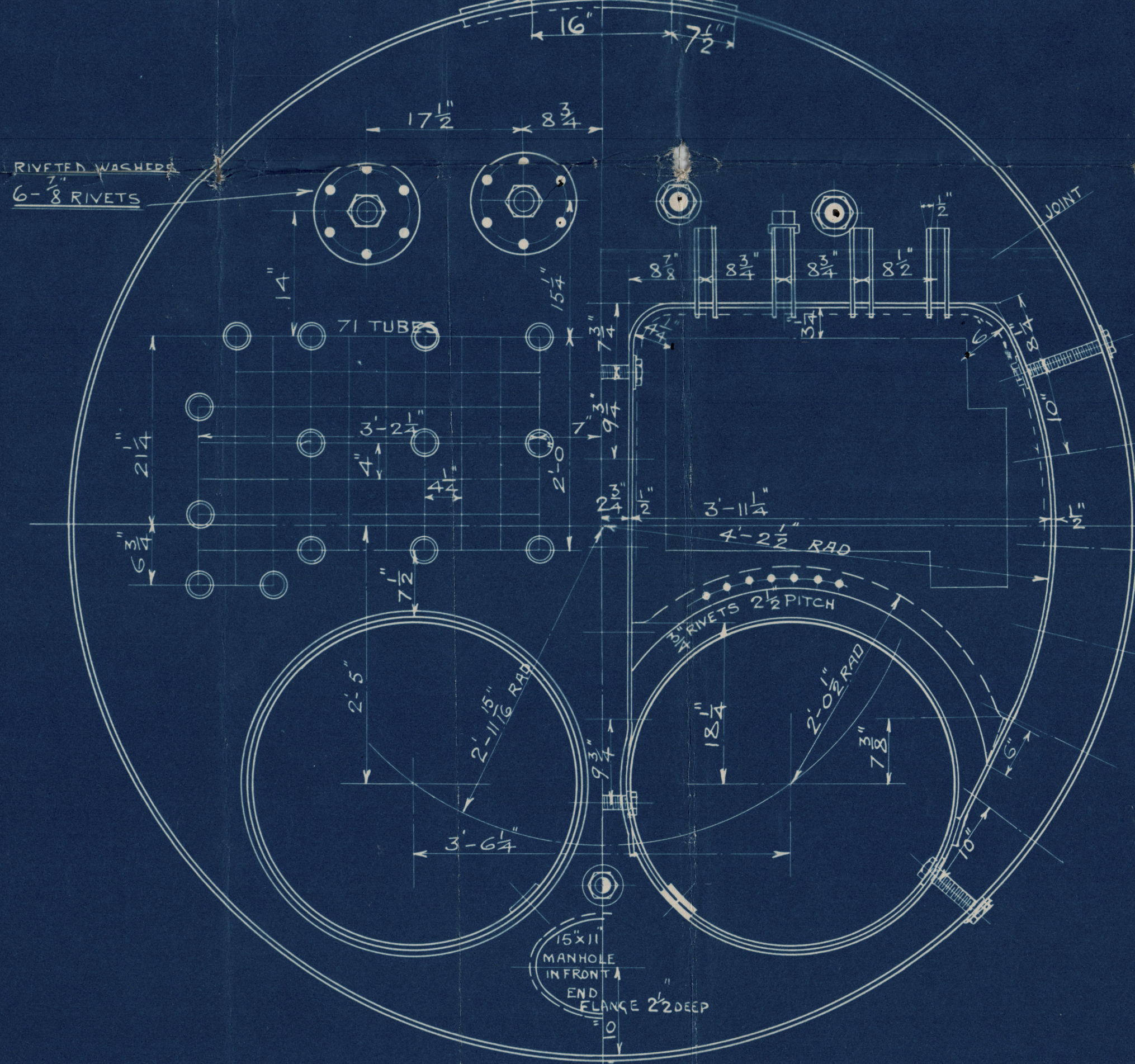
TEST " 160 " " " "

TO LLOYD'S REQUIREMENTS



ALL PLATES OF STEEL
" RIVETS " "
" TUBES " IRON

ALL HOLES TO BE DRILLED IN PLACE



ONE THUS:-

SWAN, HUNTER & WIGHAM RICHARDSON LTD
ENGINE WORKS DEPARTMENT,
NEPTUNE WORKS
WALKER,
NEWCASTLE-ON-TYNE
No. 3346 DATE 8-4-05

DONKEY BOILER N^o 740.

SCALE:- 1 INCH = ONE FOOT.

8/4/05.

12.4.05

10/4/05

W479-0062

New Castle on Tyne
Swan Hunter & W Richardson

Donkey Boiler No 740

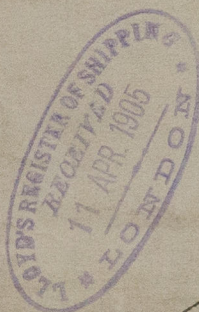
RECEIVED

No 7063

160 lb.

J H H

24-8-05-



J. J. Lestris

Newcastle Report

No 49439 1919
L
W479-0662

Lloyd's Register
Foundation