

- JAN 31 1927

Index No. **32295**
(For London Office only.)

Lloyd's Register of Shipping.

SURVEYS FOR FREEBOARD.

PARTICULARS IN RESPECT OF STEAM SHIPS HAVING SPAR OR
AWNING DECKS.Port of Survey *Rotterdam*
Date of Survey *Building*
Name of Surveyor *J. H. H. H. H. H.*Ship's Name.
SIMON BOZIVARPort of Registry
and Nationality.*Dutch*
*Amsterdam*Official
Number.*138*Gross
Tonnage.*7905.51*

Date of Build.

1926/1927

Particulars of Classification.

100 A1 Contemplated.

Number in Register Book.

Registered
dimensions from
Ship's Register.

LENGTH.

419.92

BREADTH.

59.17

DEPTH.

*27.79*UNDER DECK
Tonnage.*5335.77*Moulded Depth as measured *31'-6"* Main Deck." " " *29'-6"* Spar or Awning Deck.Length on
LOADLINE*420'-0"*Frame Depth *11 1/2'* Ceiling *fitted*Rule " *6 1/2'* Sheer *+ .43**super plan fitted**= - .83**Sparring fitted*Peak
Tanks*3 included**for 6 1/2" frames**in lower decks**- 20 tons*CORRECTED
DIMENSIONS.*420.0**58.34**28.22**5315.77*Co-efficient of fineness *.769*Any modification necessary
[Para. 4 (a) to (e)*] *C.D.B*Co-efficient as corrected *.75*Allowance for strength in excess of Lloyd's rules = *✓*

State particulars—

Three complete steel decks
Bulkhead framing
*No Camber to Deck Beams.**Superstructure deck is only a*
deck laid forward and aft.
way of 1/2 length (passenger accommoda-
tion) 1 inch cement on steel deck
india rubber on top.
rainwater cement and india rubber
*under accommodation**Straight* *Straight* *Straight* *Stem*
128.0 *160.0* *132.0* *90.0 Sheer**128.0 x 27.68 = 3542**132.0 x 45.0 = 5940**67.71* *420* *19482**52.00* *22.57 x 3 = 67.71 moulded Sheer**115.71**.43*Sheer at Stem *90* at 1/2 length from Stem *54 3/8*Sternpost *55 3/8* " " " Sternpost *32 3/8*

Drop in Sheer abaft amidships.....

from frame 49 to frame 108

Round of Spar-deck Beam.....

" " Main-deck " *nil*

Length x Height.

State if open or closed at ends.

Forecastle *37.42 x 7'-6"* *open*Bridge..... *✓ x*Poop..... *✓ x*FREEBOARD recommended amidships from centre of Disc to top of Statutory Deck Line, *W* (Steel) Deck:—

Fresh Water Line

above centre of Disc ...

Indian Summer Line

" " " ...

Winter Line

below " " ...

Winter North Atlantic Line

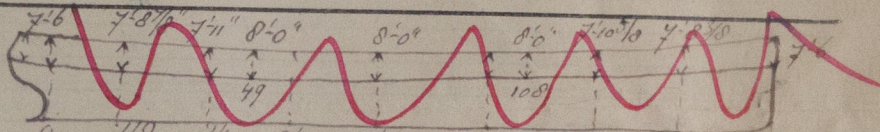
" " " ...

*12 - 4 1/2**7**6 1/2**6 1/2**✓***7 MAR 1927**NOTE.—All vessels equal in strength to Lloyd's Spar-decked rule, or which, although in excess of that rule, do not come up to Lloyd's requirements for Ships of full scantlings to the upper deck, are to be considered as Spar-decked Ships, the freeboard for which will vary with their strength.
All vessels equal in strength to Lloyd's Awning-decked rule, or which, although in excess of that rule, do not come up to Lloyd's requirements for a Spar-decked Vessel, are to be considered as Awning-decked Ships, the freeboard for which will vary with their strength.

* If the frames, skin planking, or ceiling are of unusual thickness the breadth of vessel to inside of ceiling should be reported if possible.

NOTE.—If the
depth is measured
when vessel is
afloat, the details
of measurement
should be reported.Addition for Keel below base line for
draught record.....*1.44*.....inches.

CORRECTION FOR LENGTH:—

Length of Ship on Load Line..... *420.0*Length in Table..... *378.0*Difference..... *42.0*Correction for 10ft..... *.8*x Difference ÷ 10 = *3.36**+ 3 1/4*Height of 'Tween Decks..... *3/8* *1/4* *1/8*

(From top of beam to top of beam at side)

Correction for Height of 'Tween Decks in Spar-decked Ships.....

Freeboard Table *B* or *C* *4 - 11 1/2*Correction for Length..... *+ 3 1/4**5 - 2 3/4*Correction for Height of 'Tween Decks in Spar-decked Ships..... *+ 8 - 0**13 - 2 3/4*Correction for Strength in excess of Lloyd's rules..... *✓*

Correction for Iron Deck if required.....

*- 3 1/2**12 - 11 1/4*Other Corrections (if any)..... *✓*Winter Freeboard..... *12 - 11 1/4*Summer Freeboard..... *6 1/2* *12 - 4 3/4*Indian Summer Freeboard..... *11 - 10 1/4*N.A. Winter Freeboard..... *✓*Correction necessary because clearside amidships measured
in accordance with the Statute is not taken at inter-
section of the ~~wood~~ steel deck with side*NIL*Winter Freeboard from Deck Line *12 - 11 1/4*Summer " " " *12 - 4 3/4*Indian Summer " " " *11 - 10 1/4*N.A. Winter " " " *✓**12 - 4 1/2**7**6 1/2**6 1/2**✓*

© 2019

Lloyd's Register

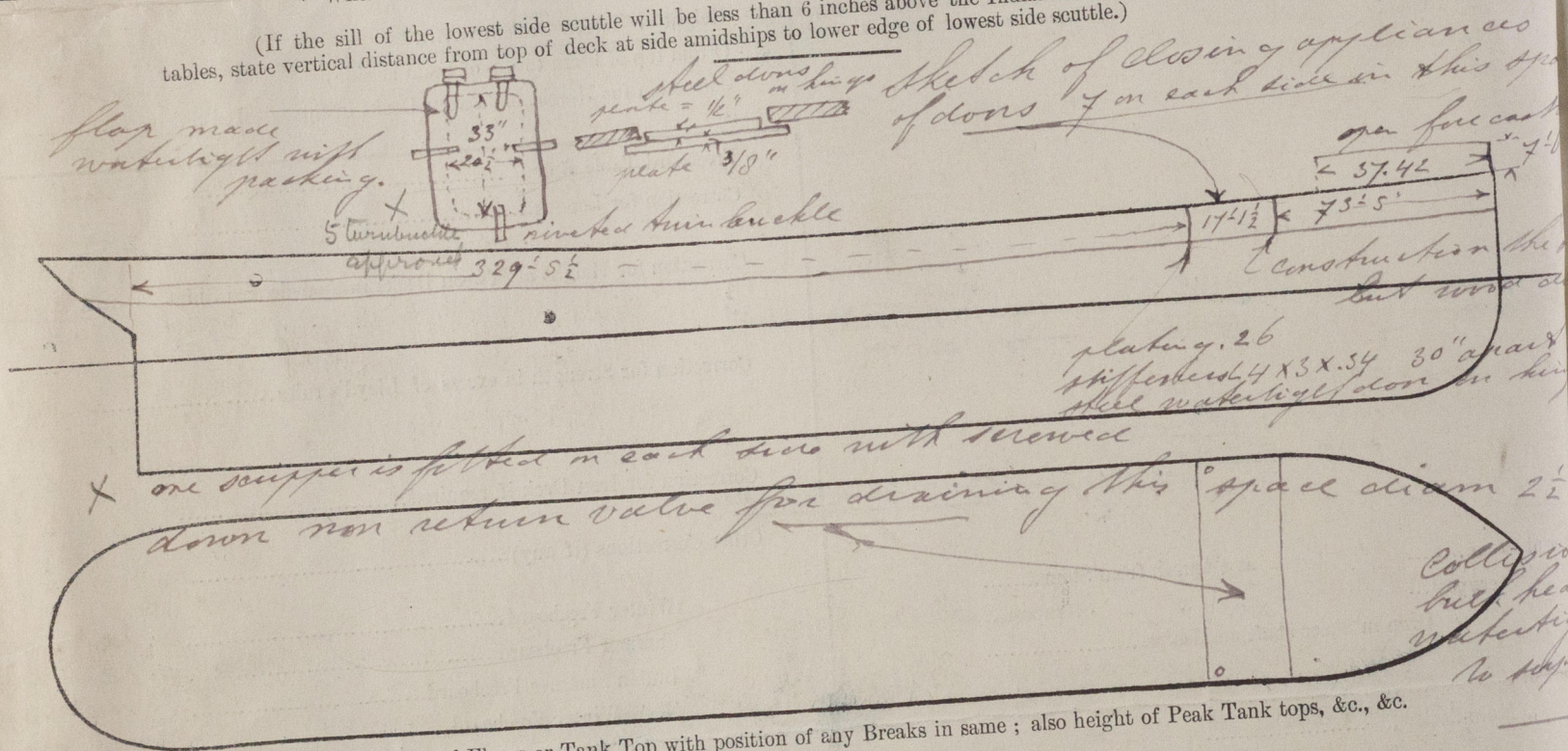
Foundation

W 478-0029

Do all the Frames extend to the top Height in the Spar deck? *yes as per plan*
 Do all the Frames extend to the top height in the Poop? *yes*
 To what height do the Reverse Frames extend? *2 frames*
 Has the Poop an efficient Iron Bulkhead at the fore end? *yes*
 Give particulars of the means for closing the openings in Bulkhead *enclosed by steel deckhouses*
 Is the Poop connected with the Bridge House? *yes*
 Give particulars of the means for closing the openings in Bulkhead *enclosed by steel deckhouses*
 What is the thickness of the Bridge Front plating? *33* and Coaming plate? *44*
 Give scantlings and spacing of the Stiffeners *33*
 Are bracket plates fitted at each end of the Stiffeners? *yes*
 Has the Bridge House an efficient Iron Bulkhead at the after end? *yes*
 How are the openings closed? *enclosed by steel deckhouses*
 Is the Forecastle at least as high as the main or top-gallant rail? *yes*
 Are the Engine and Boiler openings covered by a Bridge, Poop, or enclosed by a Strong Iron or Steel Deckhouse? *enclosed by steel deckhouses*
 If the openings are not so protected are the exposed parts of the Casings efficiently constructed? *yes*
 Give thickness of plating; scantlings and spacing of Stiffeners *Coaming .32-.28 plating .24 stiffeners 75x75x.75*
 What is the height of the exposed Casings? *covered to bottom deck* Are suitable means provided for closing all openings in them in bad weather? *yes*
 Are the Weather Deck Hatchways efficiently constructed and at least equal to the requirements of Section 28 of the Rules for 1904-5? Give particulars below:—

Position and Size.	24'-9" x 15'-0"	24'-4 1/2" x 18'-0"	24'-4 1/2" x 18'-0"	Ship.	Rule.	Ship.	Rule.
Item.	Ship.	Rule.	Ship.	Rule.	Ship.	Rule.	Rule.
COAMING.							
Height above top of DECK	33	33	33	33	33	33	33
Thickness							
Sides	.44	.44	.44	.44	.44	.44	.44
Ends	.44	.44	.44	.44	.44	.44	.44
SHIFTING BEAMS OR WEB PLATES.							
Number	3	3	3	3	3	3	3
Section and Scantlings	7 1/2" 10" x .36"	7 1/2" 16" x .32"	7 1/2" 14" x .32"	7 1/2" 16" x .32"	7 1/2" 16" x .32"	7 1/2" 16" x .32"	7 1/2" 16" x .32"
Material	IL 11 1/2" 4x3x.44	IL 9 1/2" 4x3x.44	IL 10 1/2" 4x3x.44	IL 10 1/2" 4x3x.44	IL 10 1/2" 4x3x.44	IL 10 1/2" 4x3x.44	IL 10 1/2" 4x3x.44
* FORE AND AFTERS.							
Number							
Section and Scantlings							
Material							
HATCHES Thickness	2 1/2	2 1/2	2 1/2	2 1/2	2 1/2	2 1/2	2 1/2
Remarks							

* When the Fore and Afters are of wood the depth should be stated from the underside of the hatches.
 (If the sill of the lowest side scuttle will be less than 6 inches above the Indian Summer Load Line if assigned under the tables, state vertical distance from top of deck at side amidships to lower edge of lowest side scuttle.)



Show hereon line of Floors or Tank Top with position of any Breaks in same; also height of Peak Tank tops, &c., &c.

State any special features in the construction of the Vessel *The vessel has been constructed in accordance with the approved plans which are retained in your office for approval.*
The fitting of the steel shutters as detailed above and as approved by your office H 23 1/2-1927 has now been taken in hand; The builders have requested the pleasure assignment by cablegram as the vessel has to be delivered by the 1st of November.
 Builder's name and yard number *Rijkswaarsche Droogdok Maatschappij*

Names of sister vessels

Owners *Rotterdamse Stoomboot Maatschappij*

Address *Amsterdam.*

Received by me *is already on the report sent to you*