

TENSILE STRENGTH OF MATERIALS

CYL SHELL PLATES & BUTT STRAPS	30 TO 34 TONS/D.
CIRDER PLATES	28 . 32
MANHOLE DOUBLING	27 . 30
ALL OTHER PLATES & FURNACES	26 . 30
LONG STEEL STAYS	25 . 32
SCREW STAY & RIVET BARS	26 . 30

WORKING PRESSURE = 215 LBS/D.

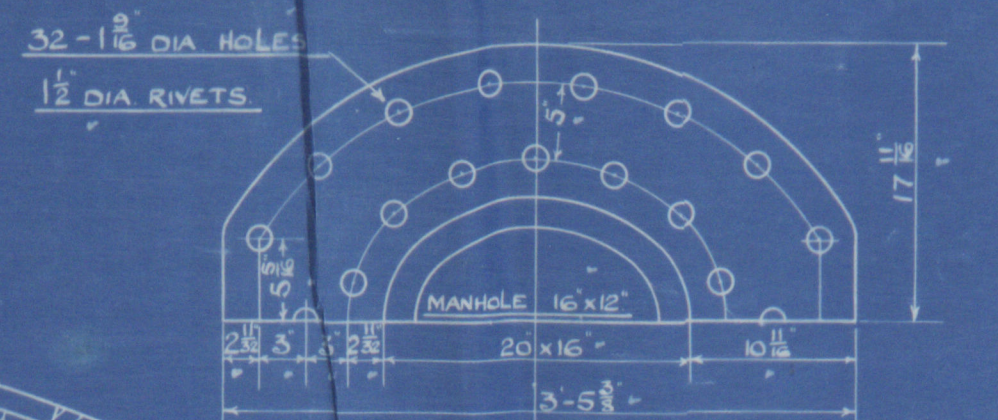
TEST = 373

ALL PLATES OF STEEL

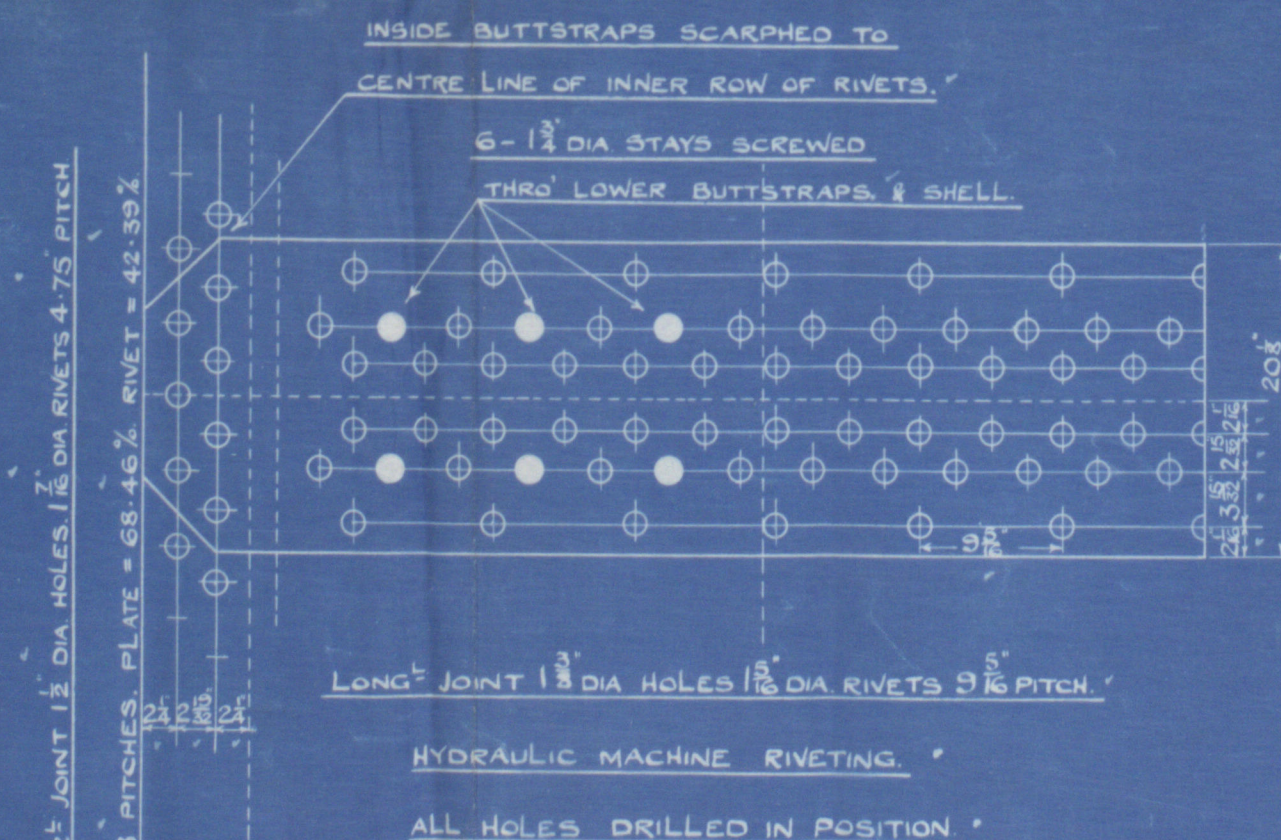
STAYS

RIVETS

TUBES IRON



POSITION OF MANHOLE AND HANDING
OF BUTTSTRAPS FIXED LATER



OUTER BUTTSTRAP-1 1/2 THK
INNER = 1 1/2

PLATE = 85.234%

RIVET = 85.288%

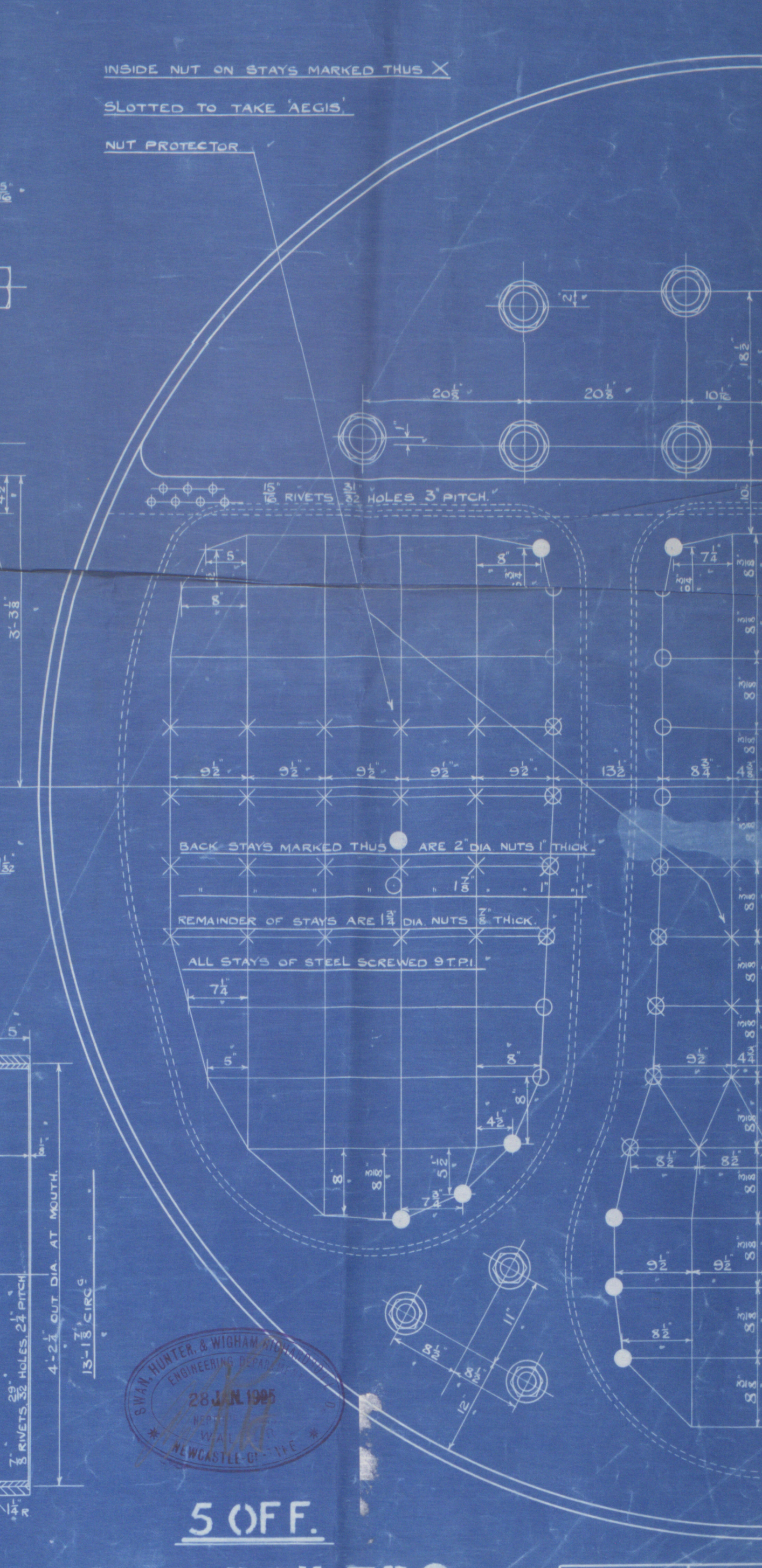
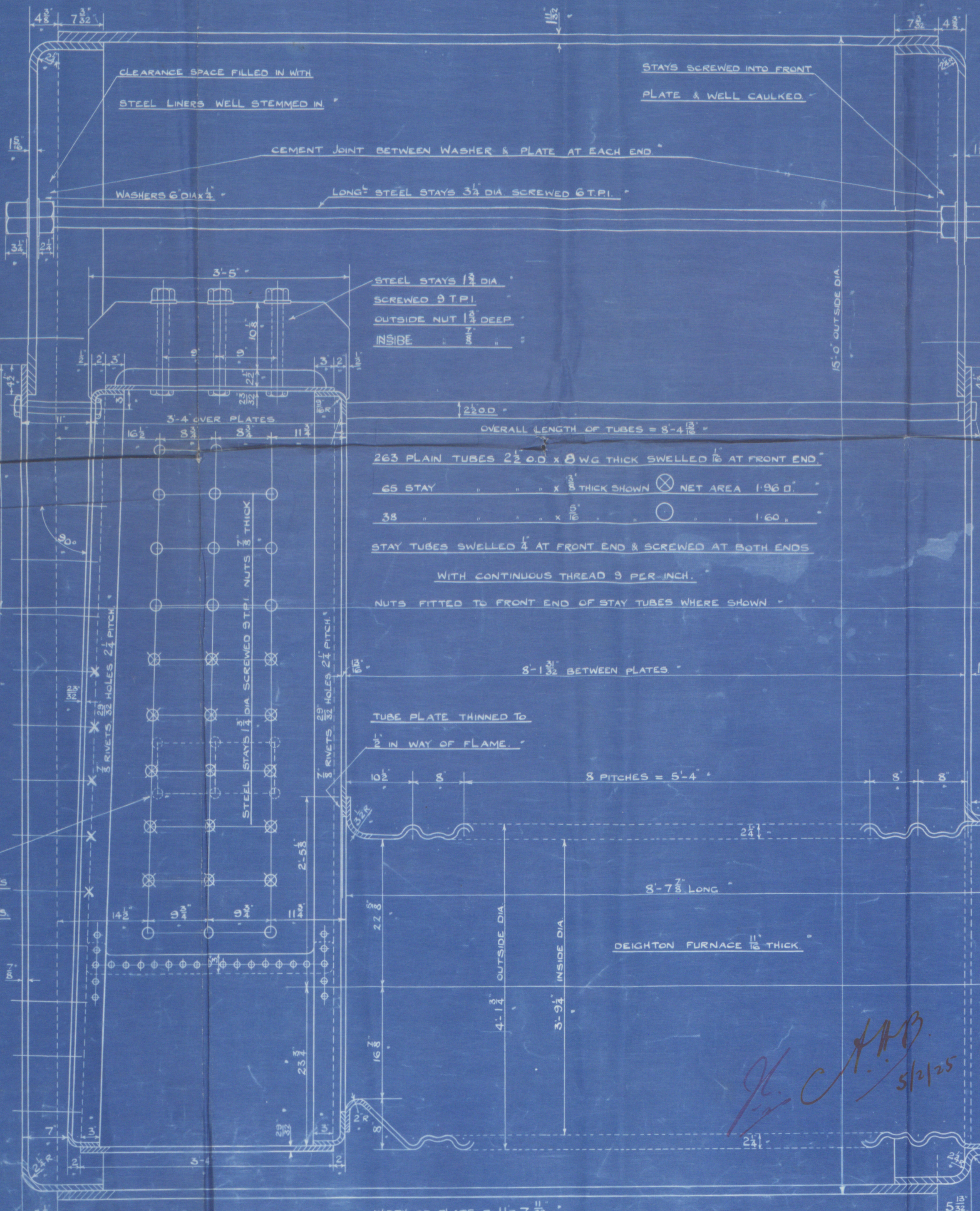
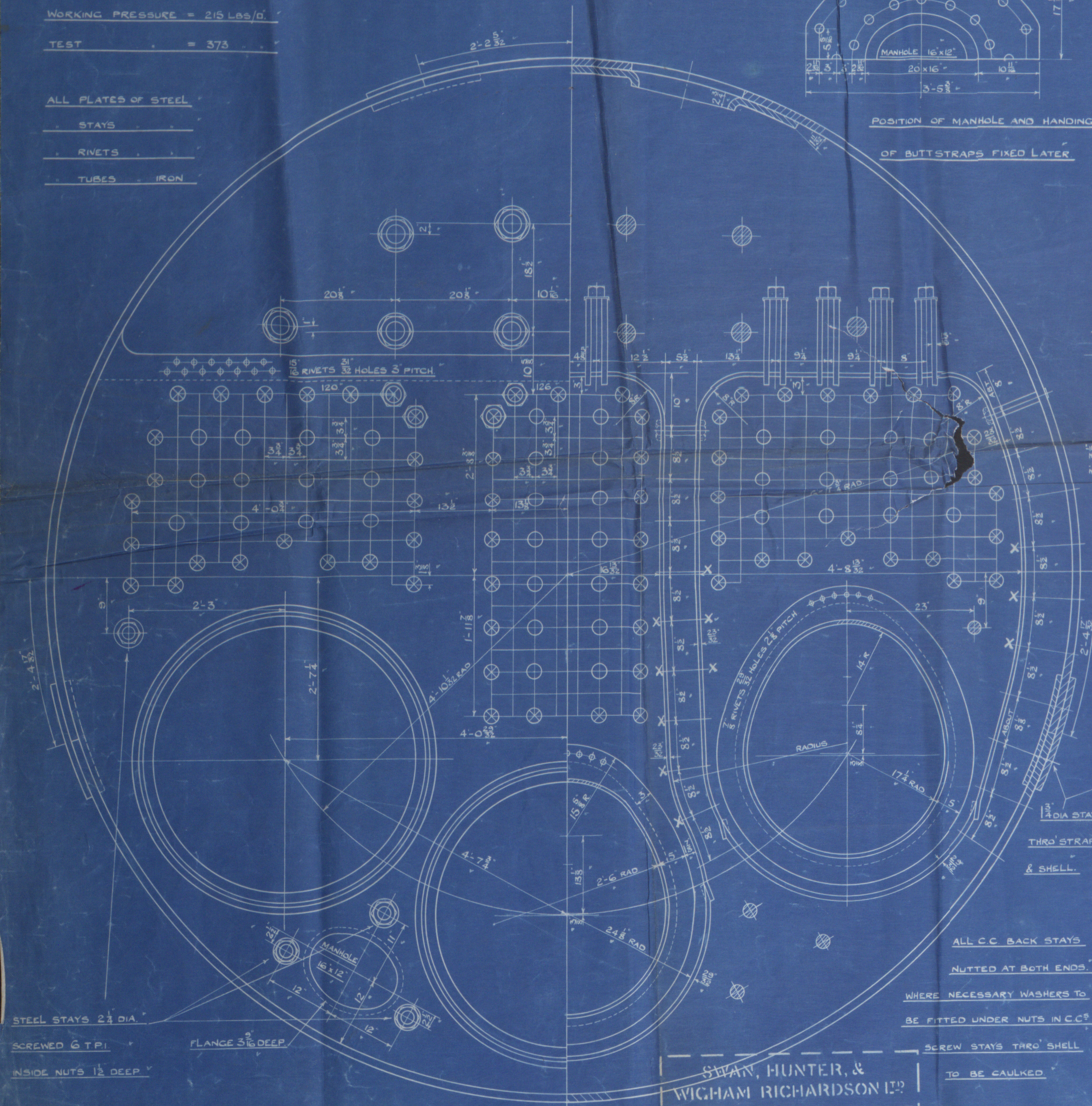
COMBINED=87.526%

TOTAL HEATING SURFACE (5 BOILERS) = 12270 sq. ft.

TOTAL GRATE AREA (5 BOILERS) = 318 sq. ft.

FIREBARS 5-6 LONG

SURVEYS:- LLOYDS & BOARD OF TRADE



SWAN, HUNTER, &
WIGHAM RICHARDSON LTD
ENGINEERING DEPARTMENT
NEPTUNE WORKS
NEWCASTLE-ON-TYNE
DATE

5 OFF.
MAIN BOILERS.

SCALE 1" = 1 FOOT

NO. 1199
DATE 20/2/25
20/2/25

50-140
20/2/24
DATE.
S. H. & W. R. Ltd
Boilers 1200
(Duplicate 1190)
Submitted to London 29/1/25
approved 6/2/25
S. H. & W. R.
advised 7/2/25
"S. S. Ardhana"

NEWCASTLE ON TYNE.

Report No. 79910.

RETAIN

W477-0346



© 2020

Lloyd's Register
Foundation