

# Single Screw Motor Tanker.

Class: Lloyds Register + 100 A1, Carrying Petroleum in Bulk"

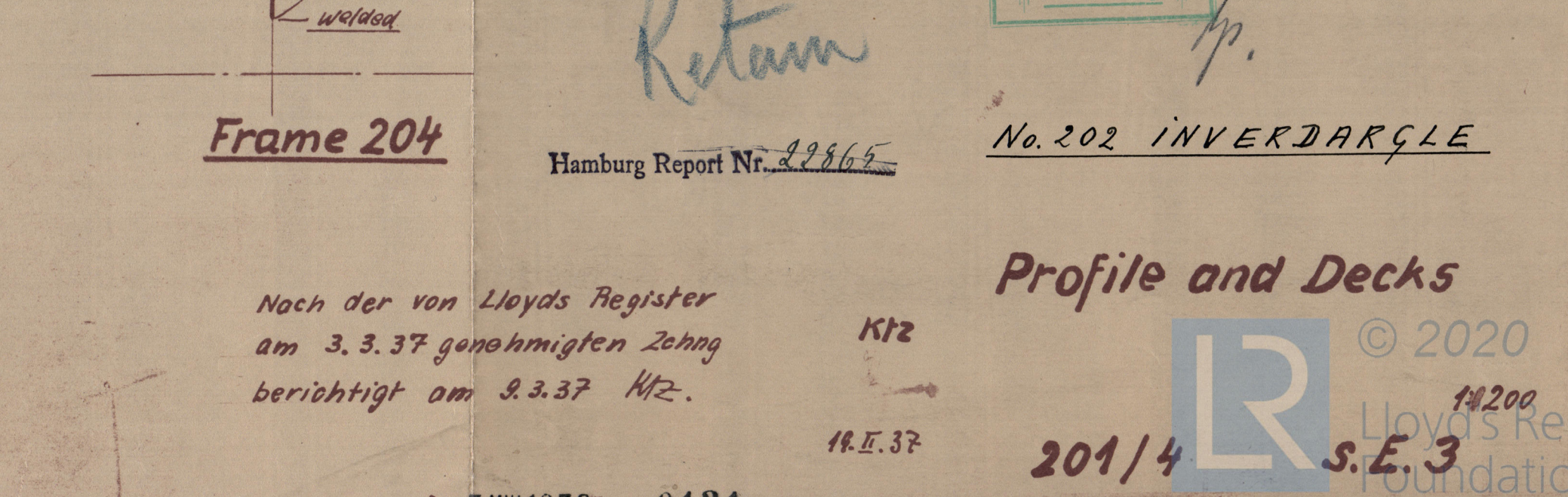
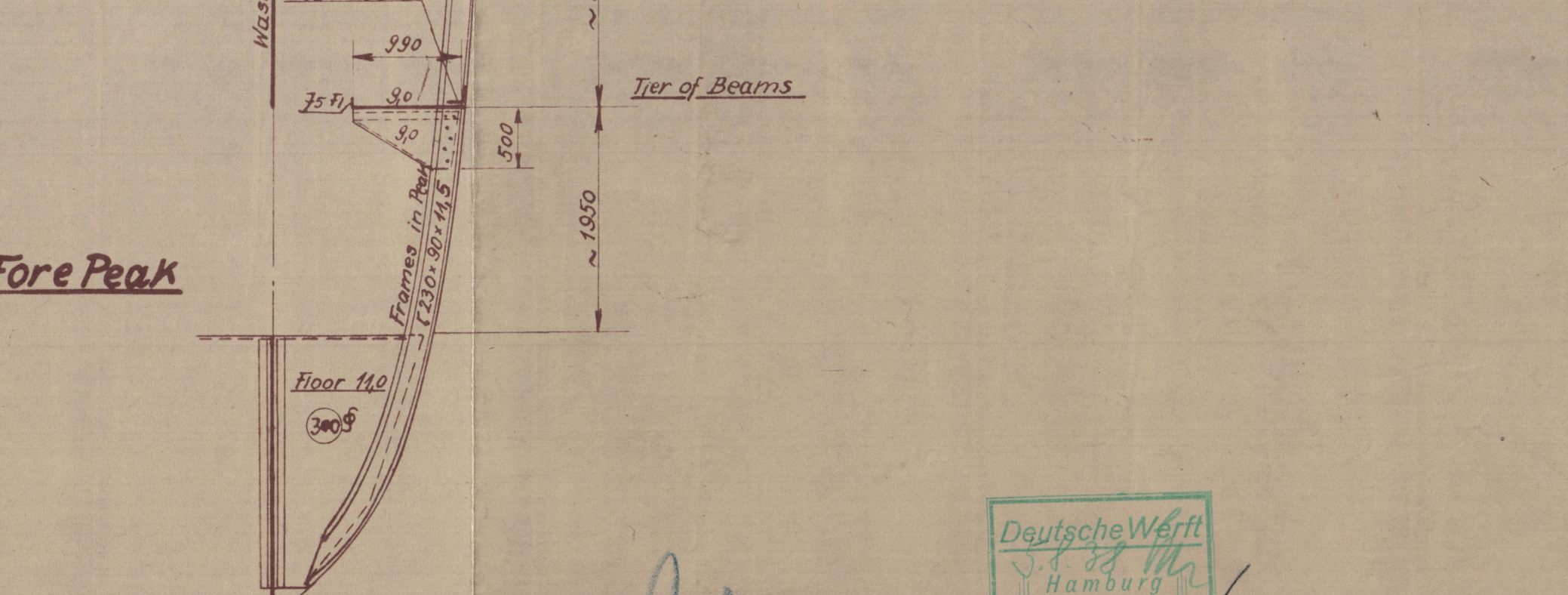
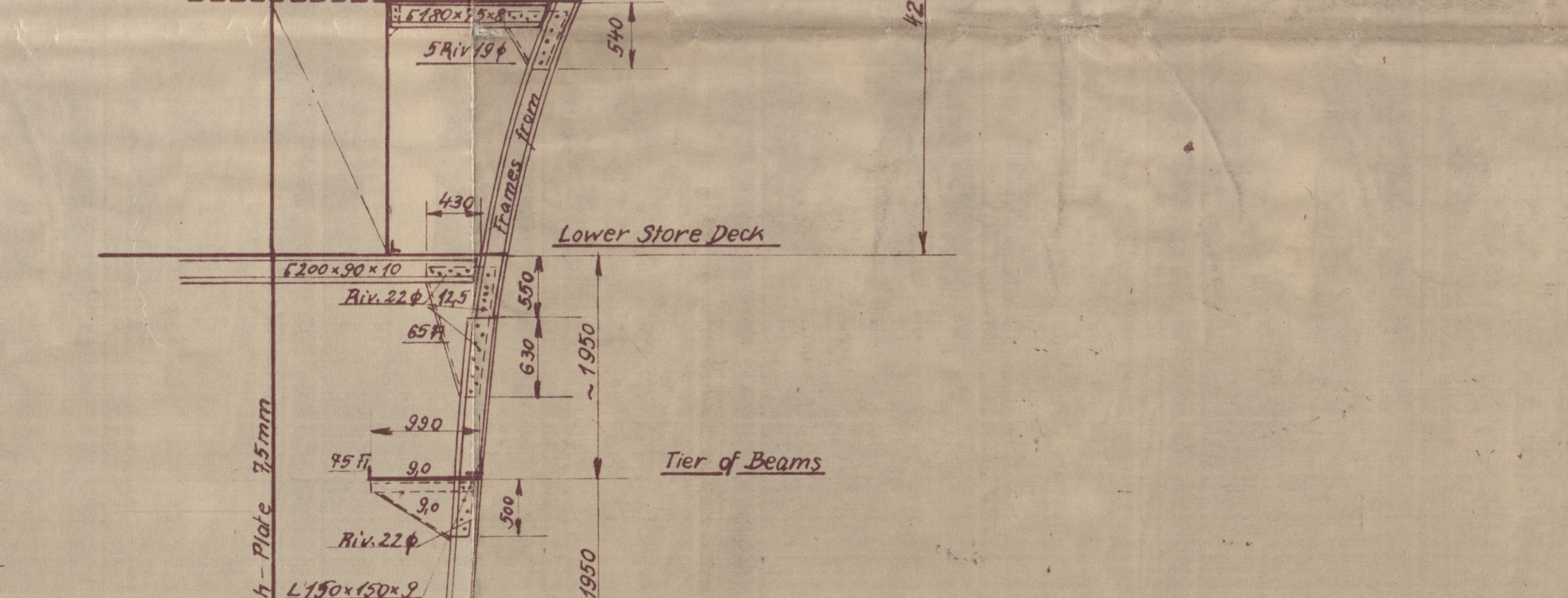
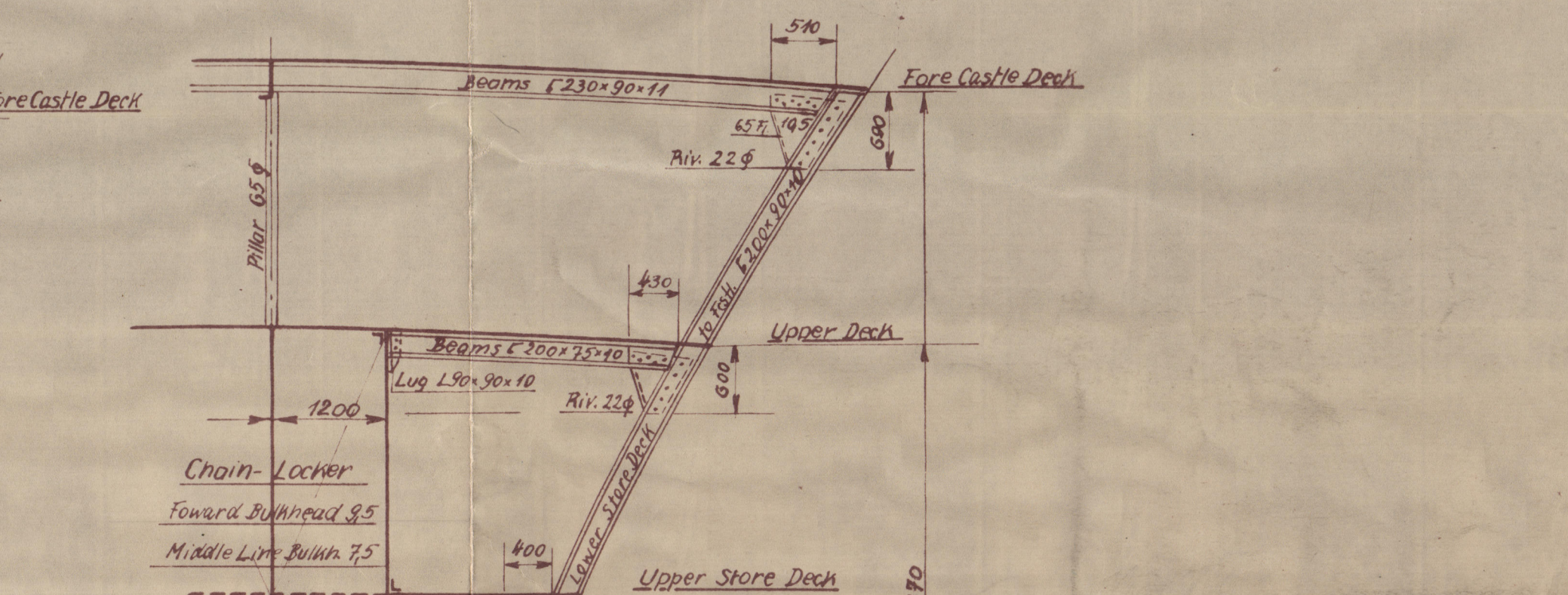
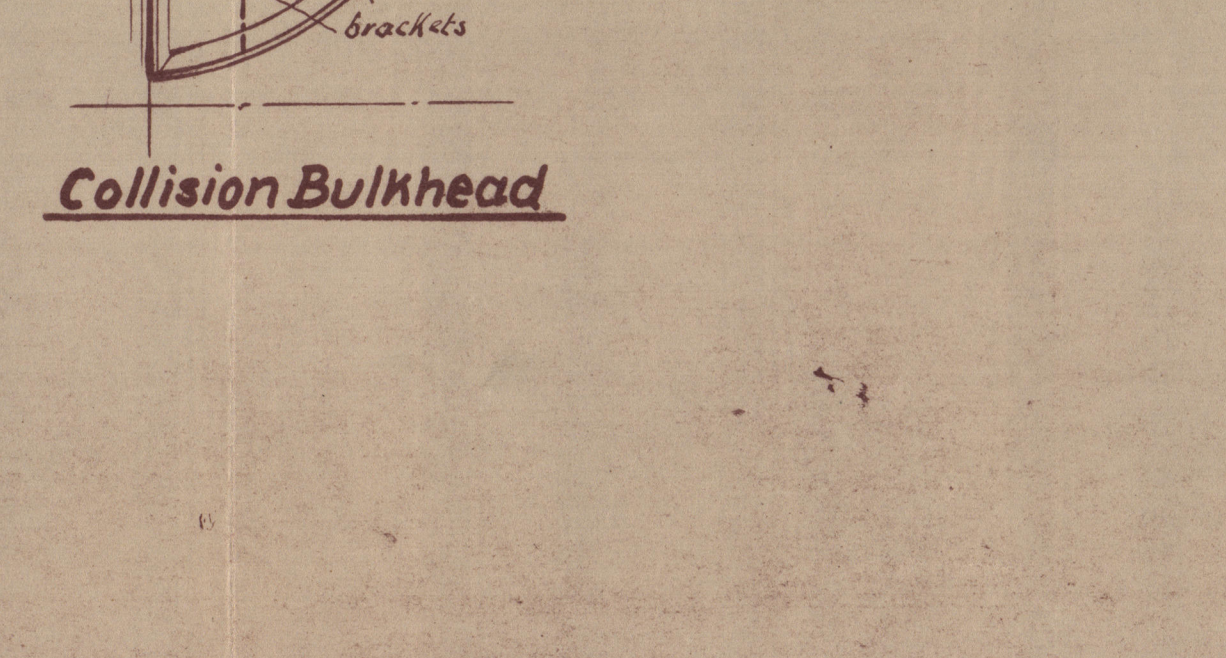
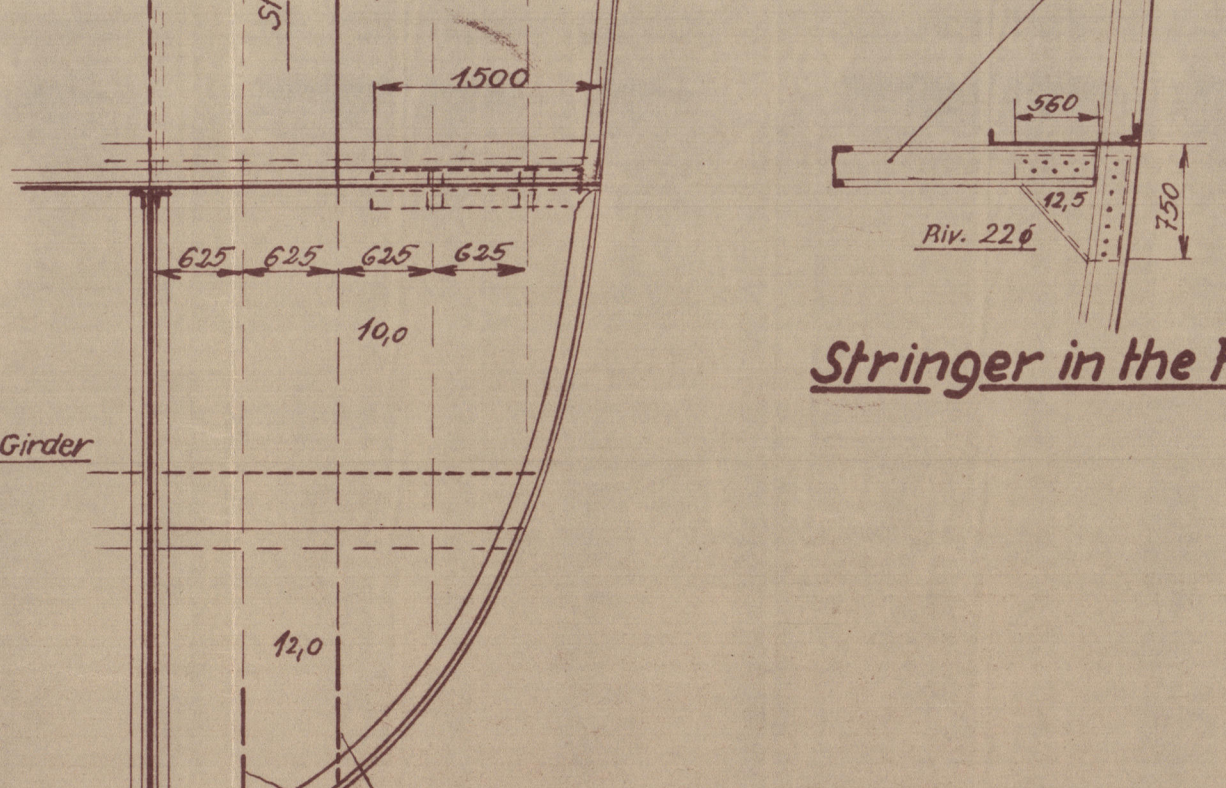
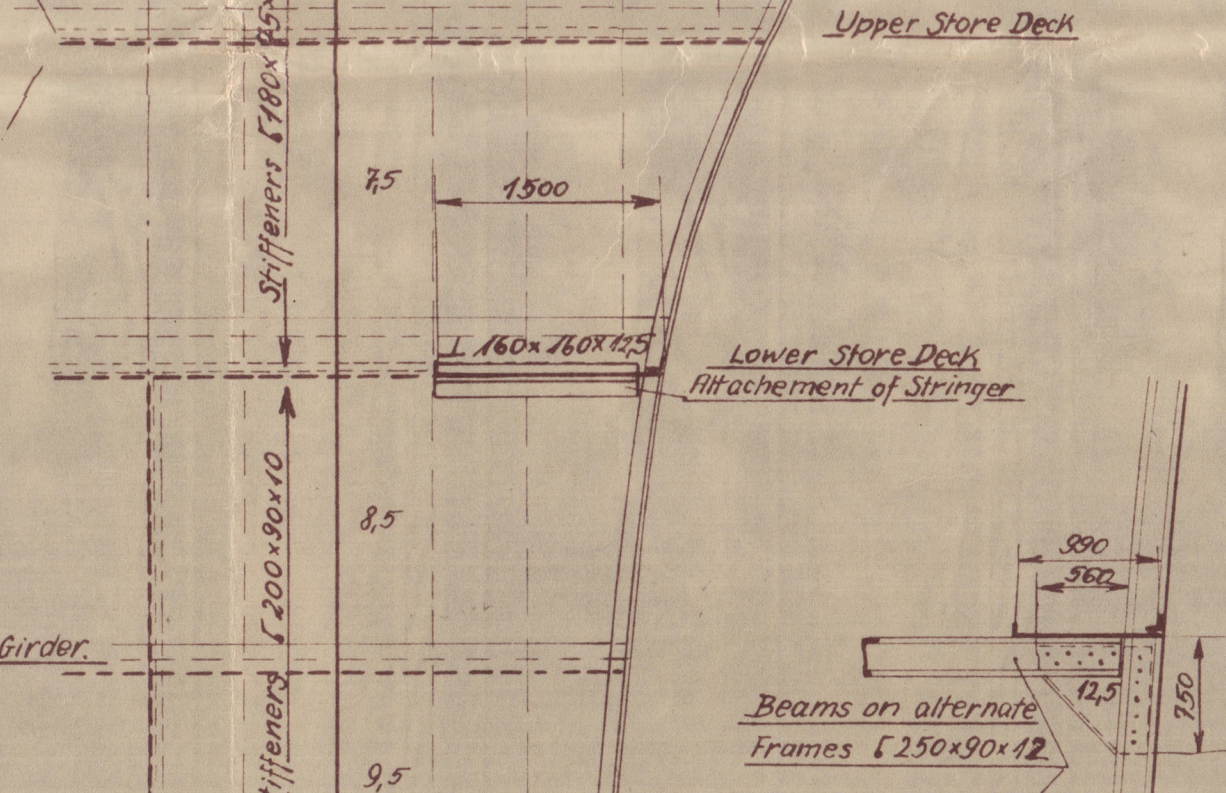
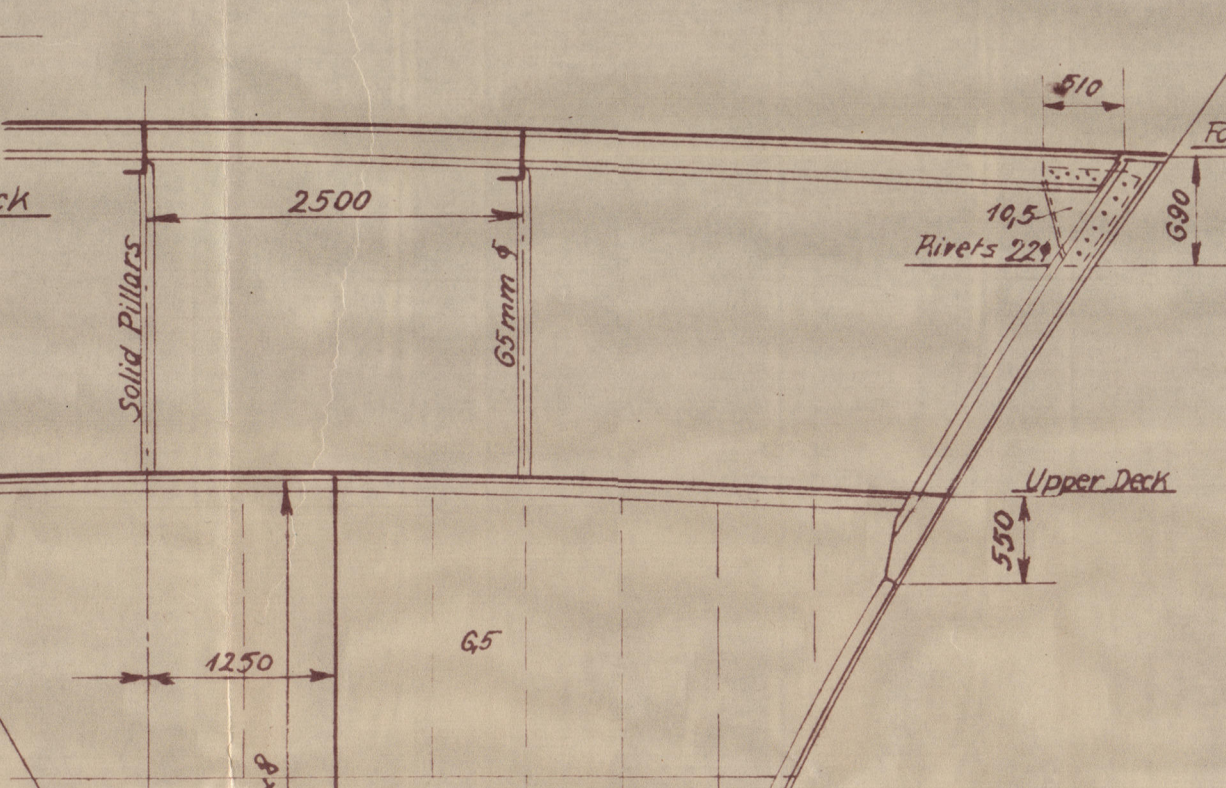
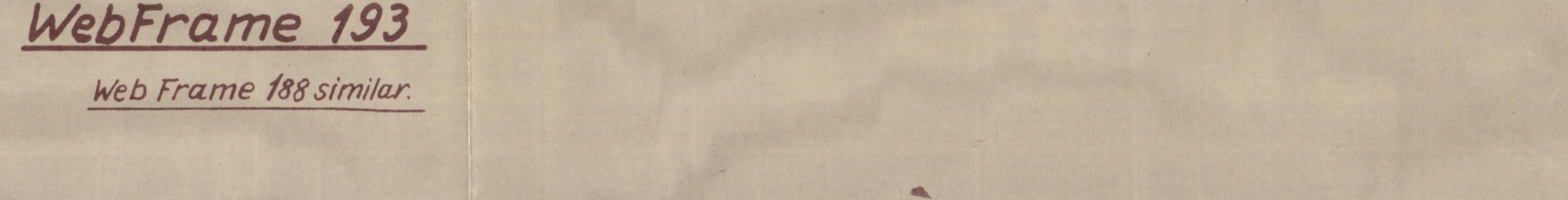
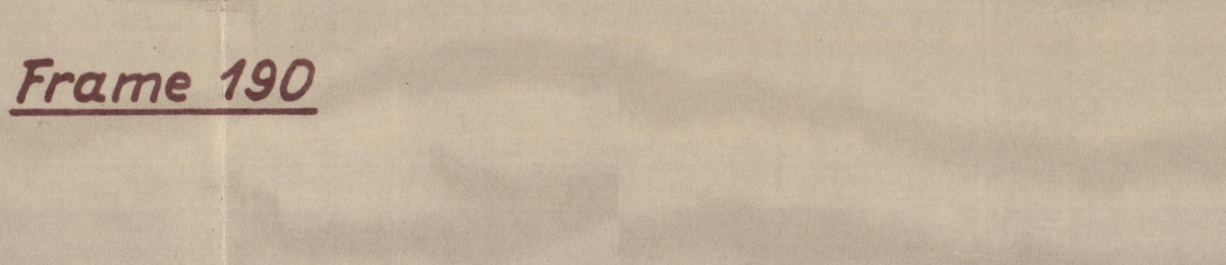
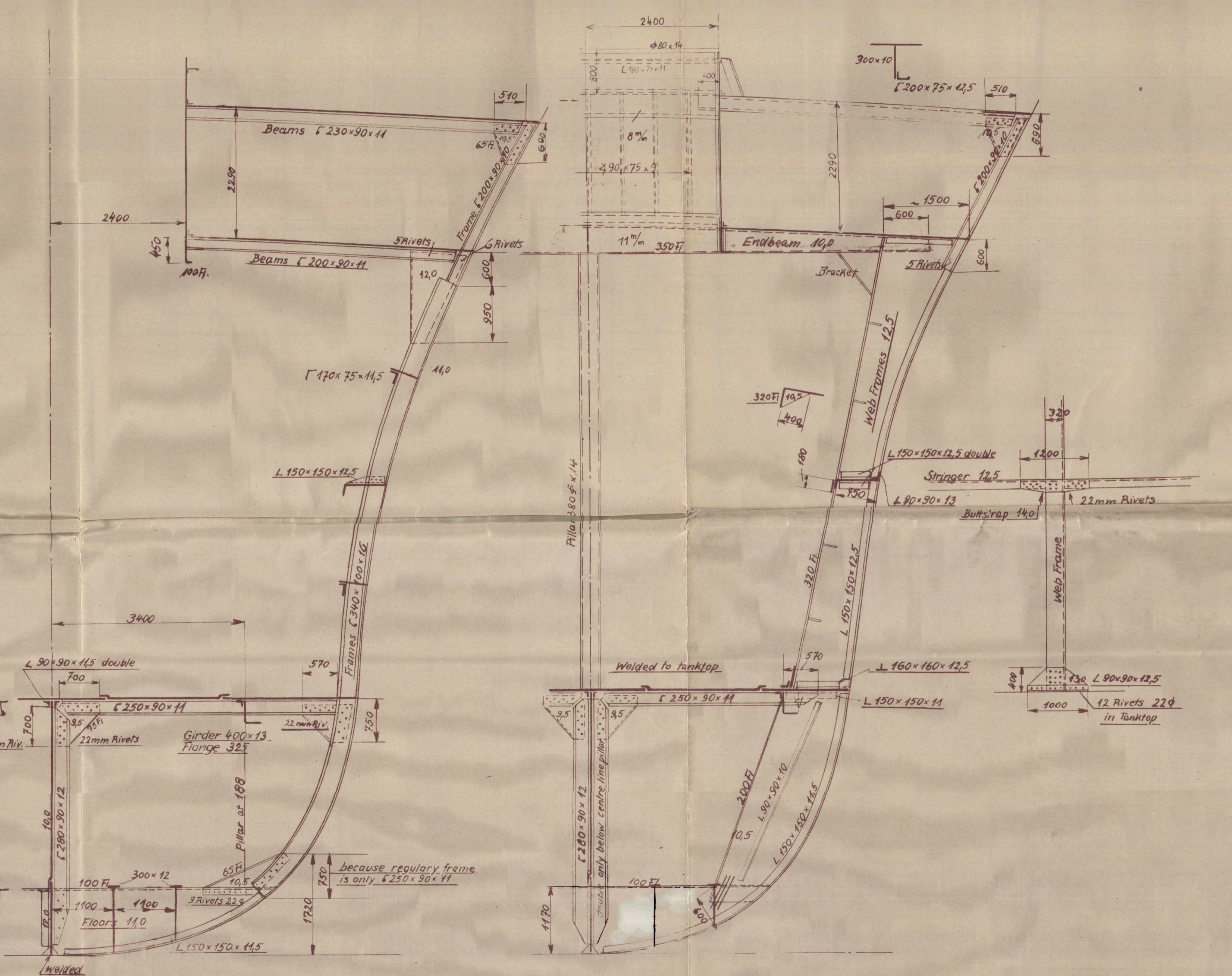
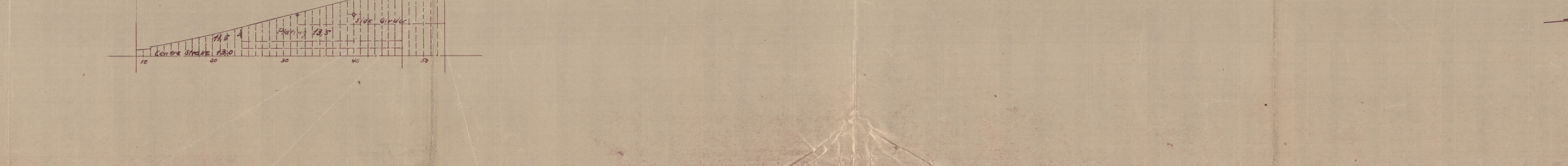
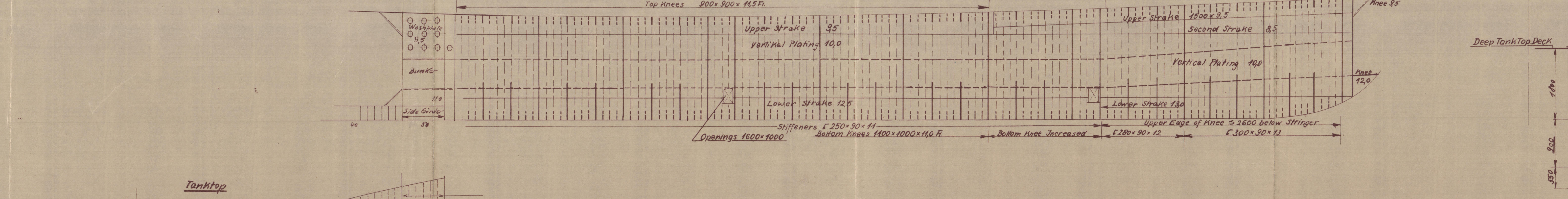
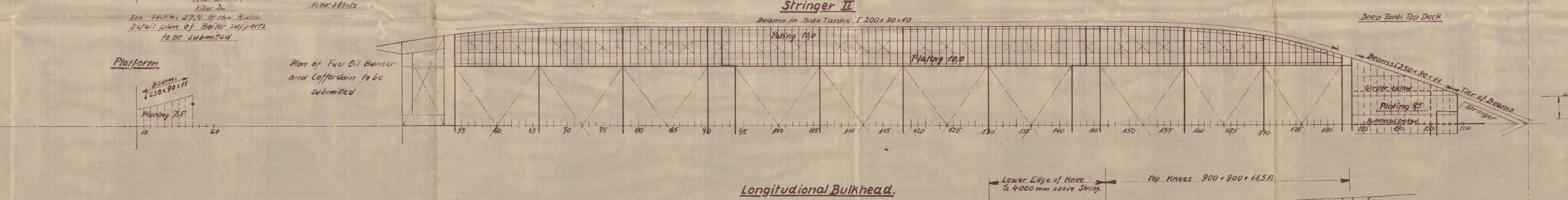
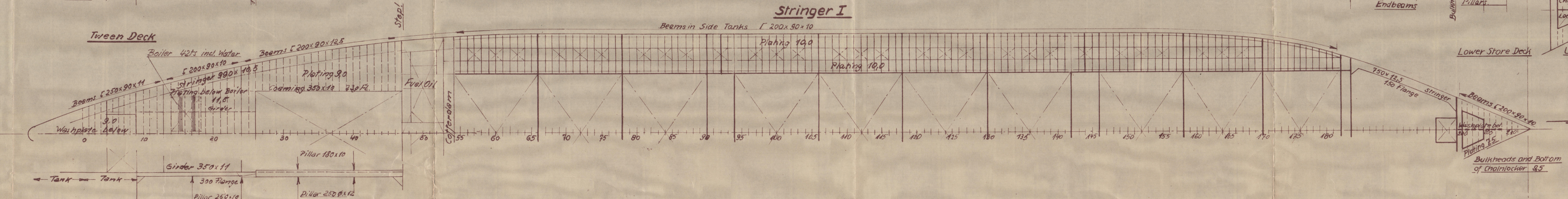
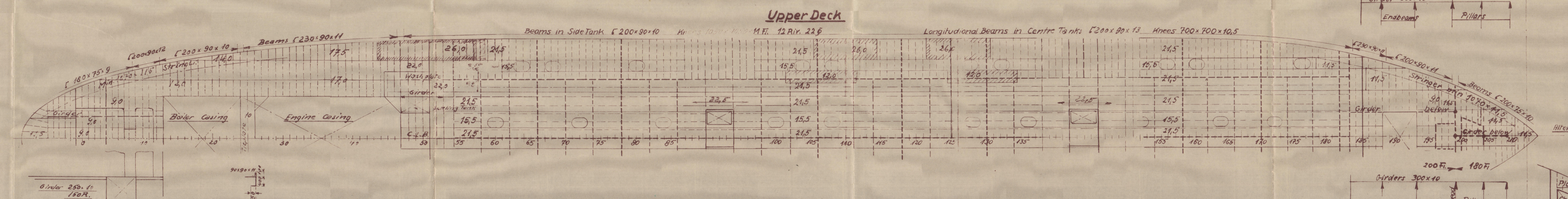
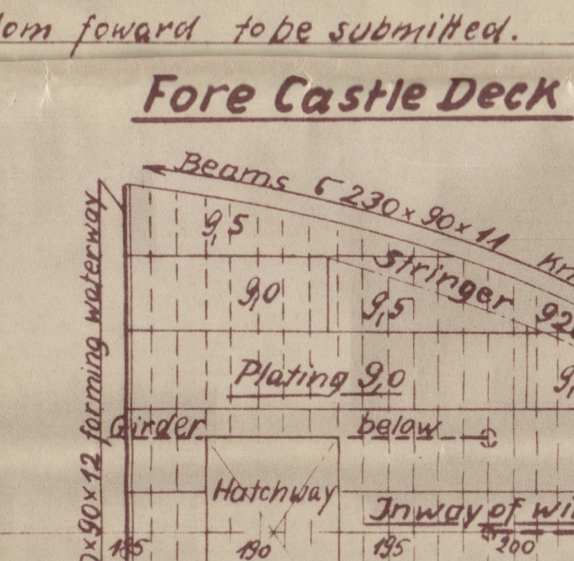
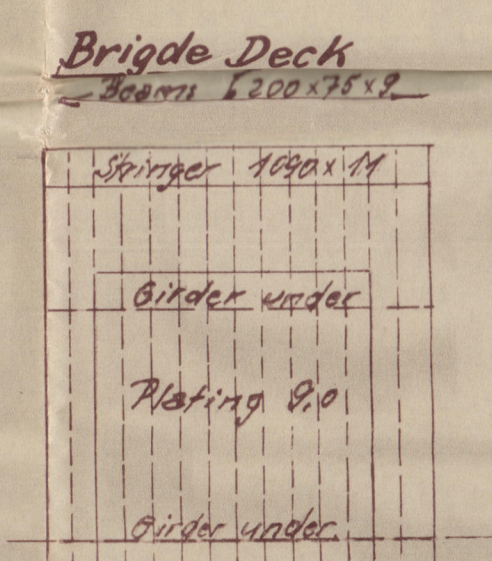
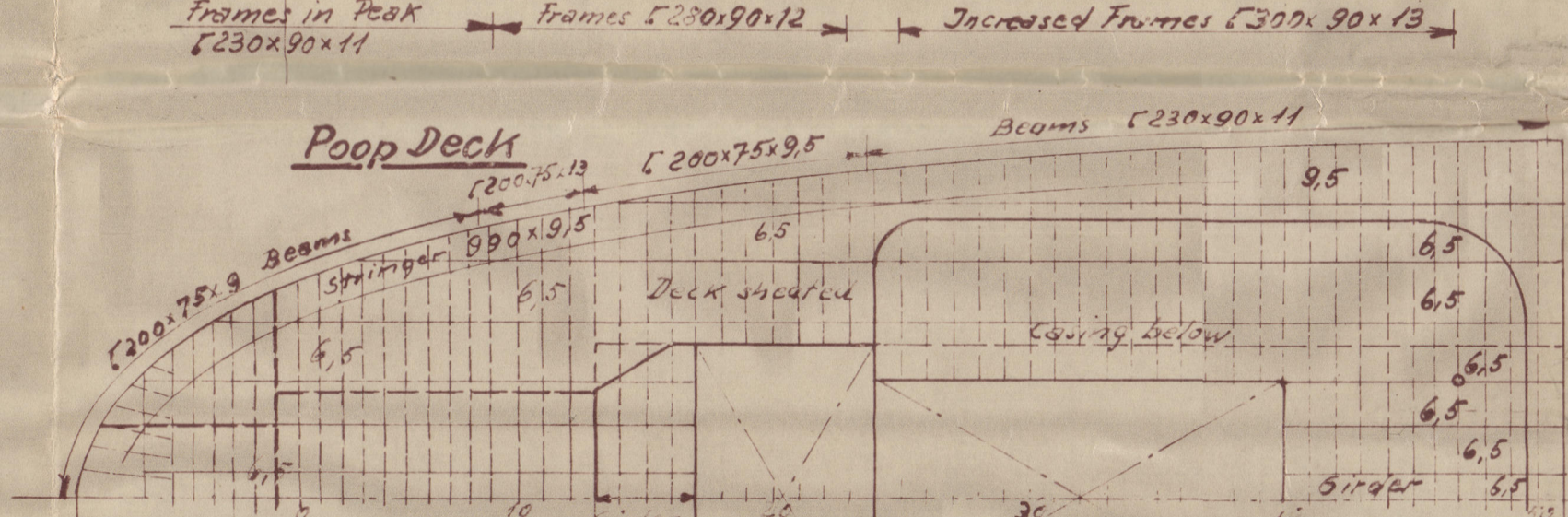
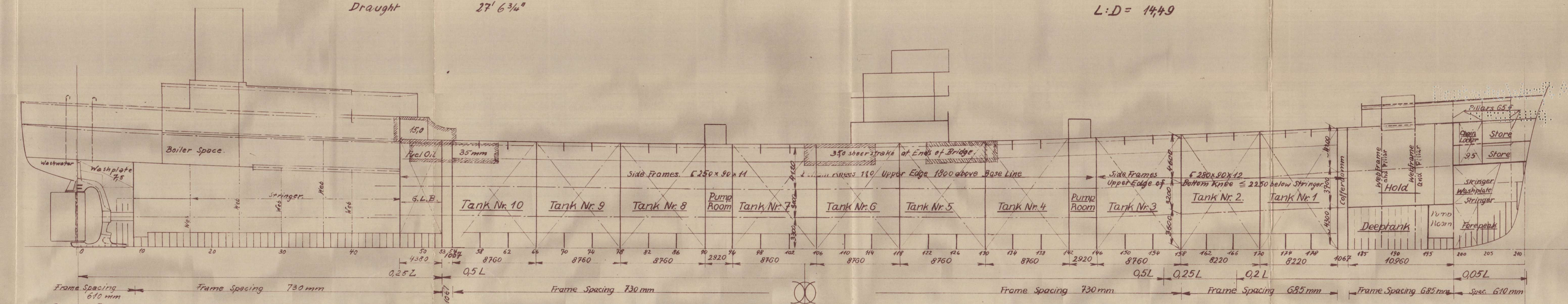
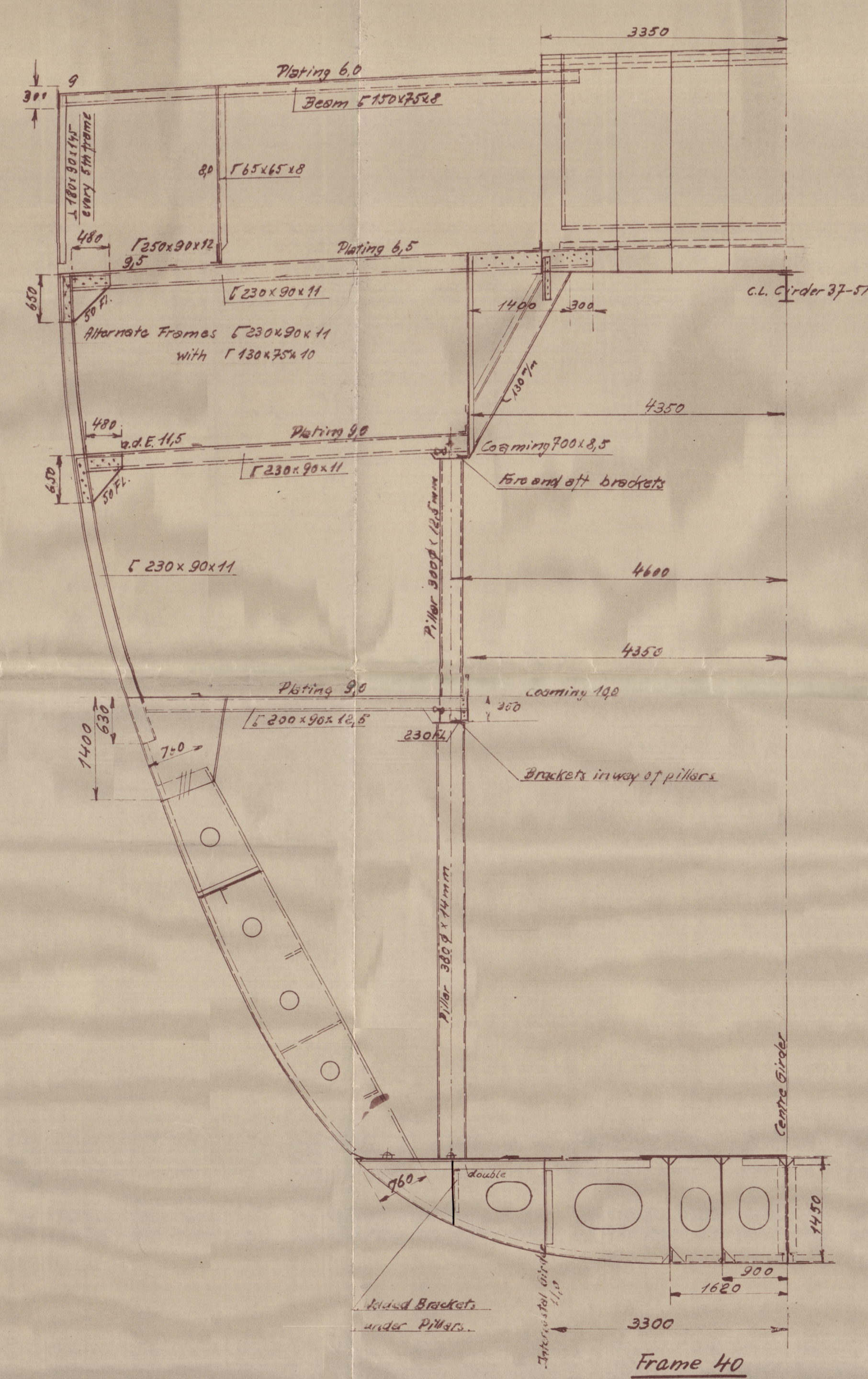
## Principal Dimensions:

Length (Lloyds) 495'  
Breadth moulded 67'  
Depth moulded 34' 3"  
Draught 27' 6 3/4"

Scale 1:200  
(Sections 1:50)

## Scantling Numerals.

First Longitudinal Number 16913  
Second " 50078  
L:D = 14.9



Return

No. 202 INVERDARCLE

Frame 204

Profile and Decks

14200

201/4

0131