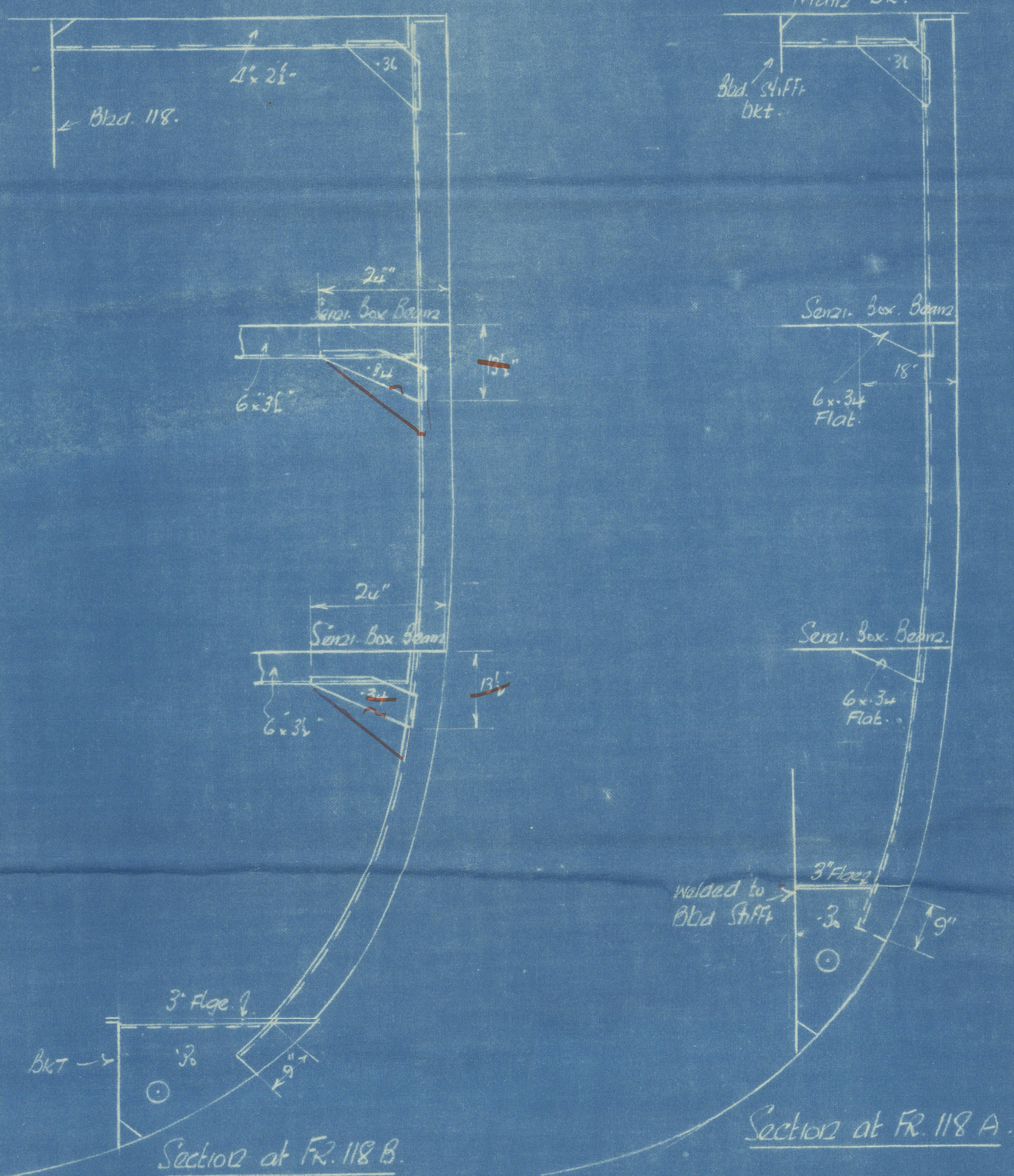


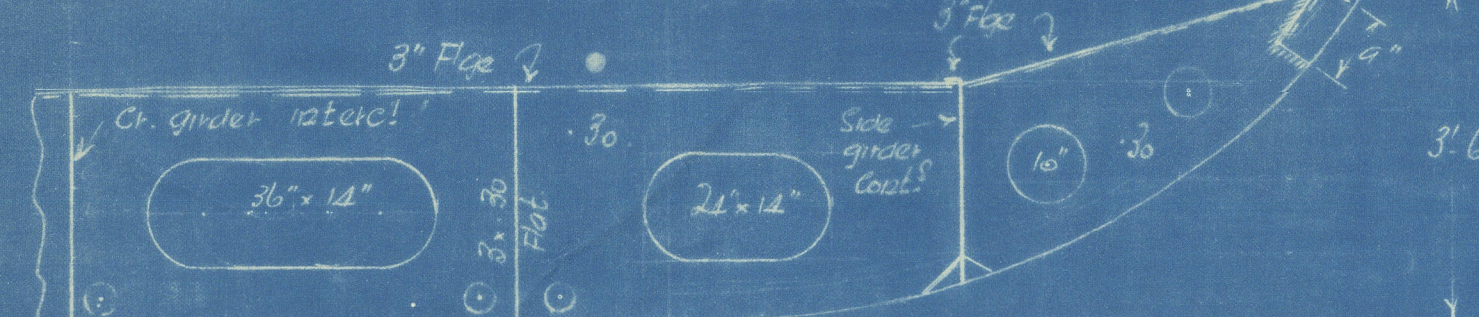
No 1507. FORE END FRAMING.

SCALE: $\frac{1}{2}$ " = 1 FOOT

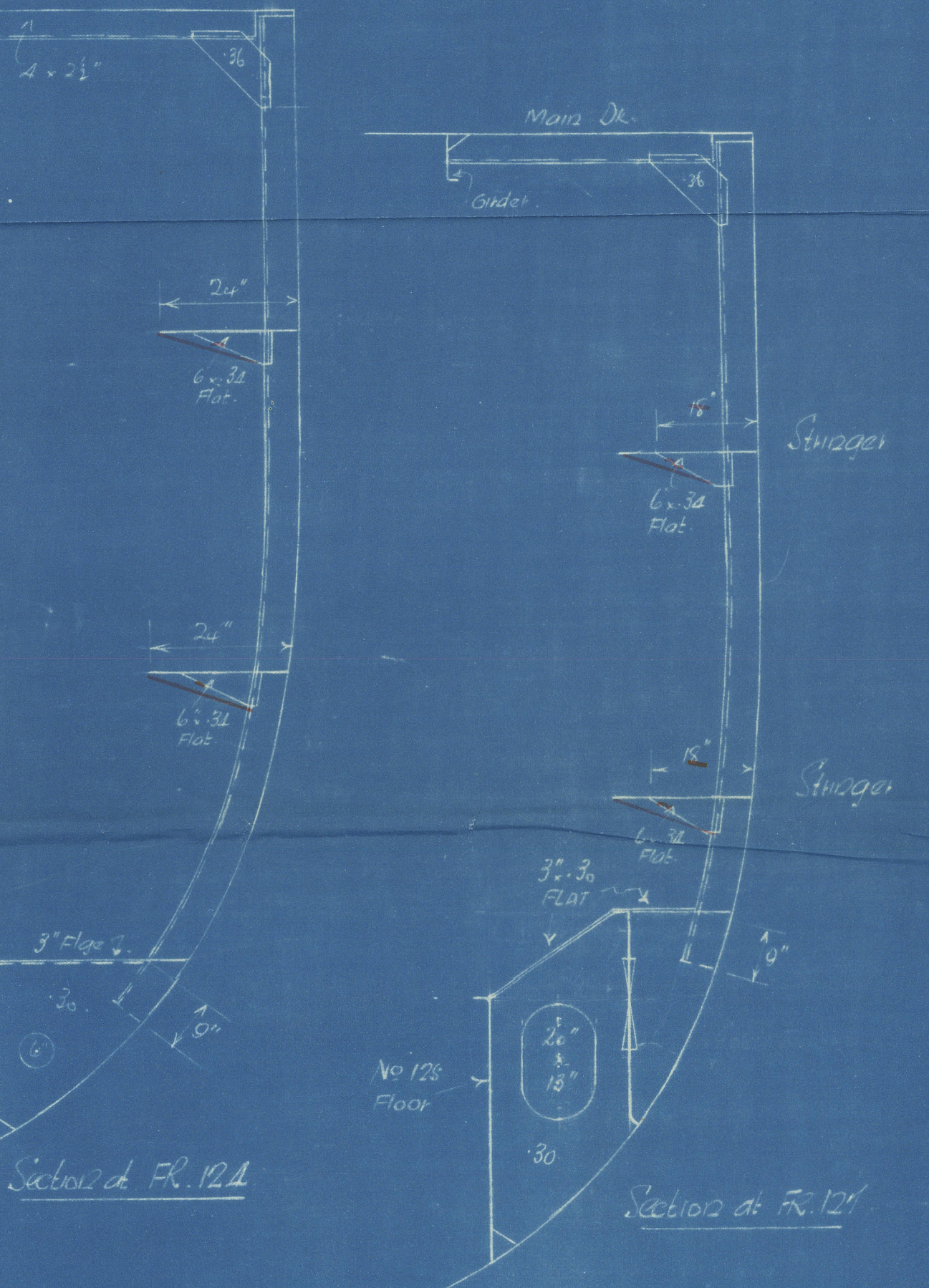
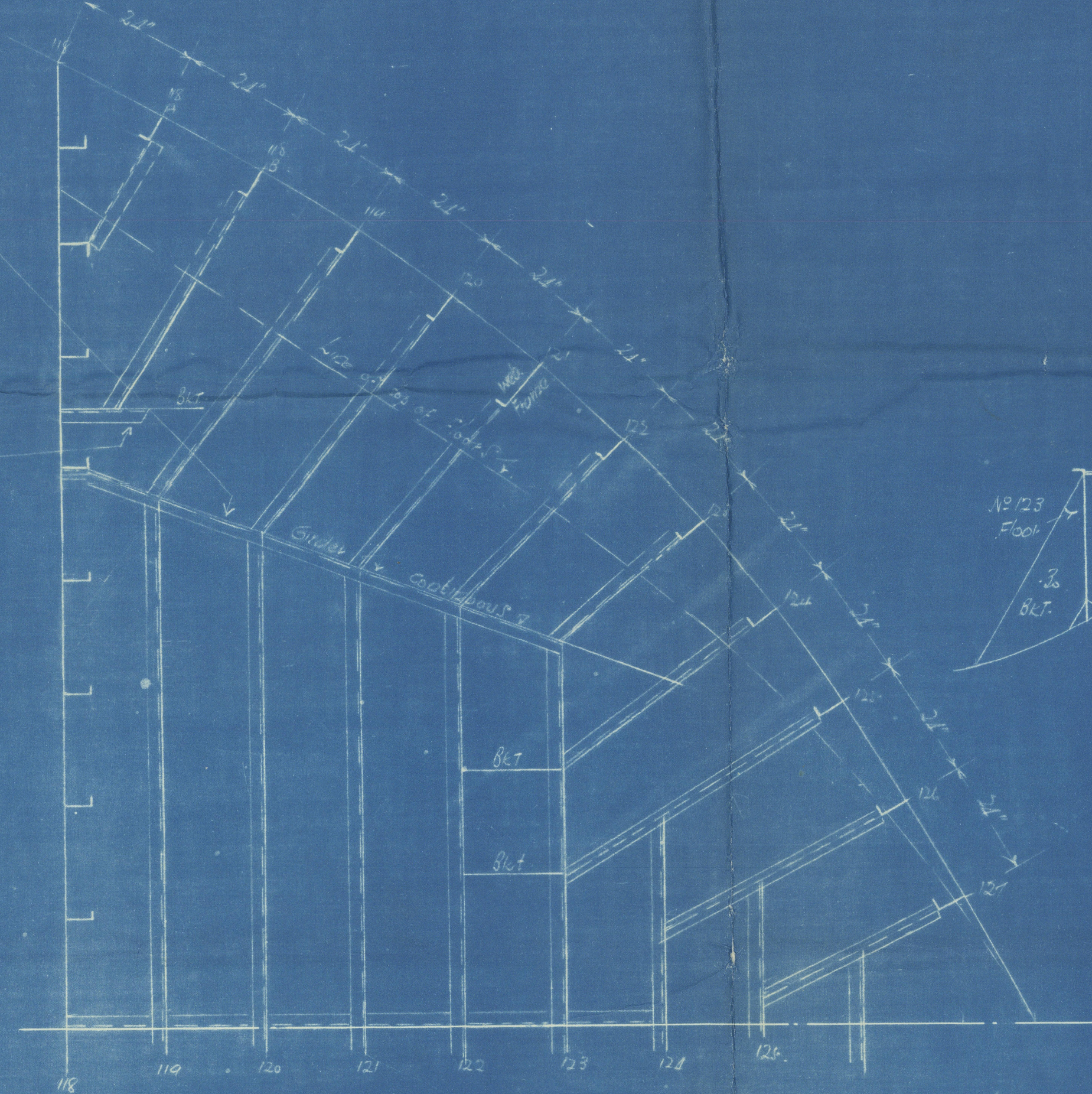
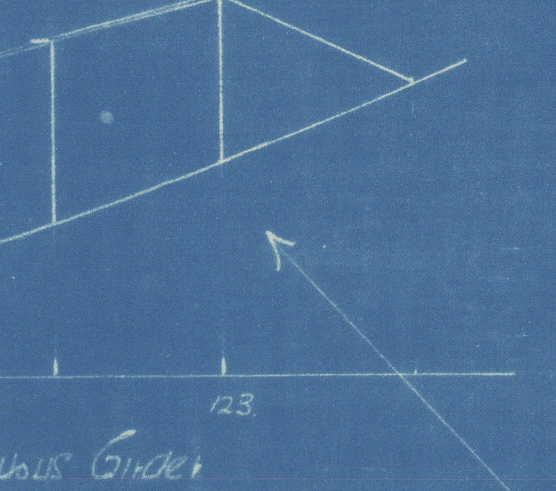
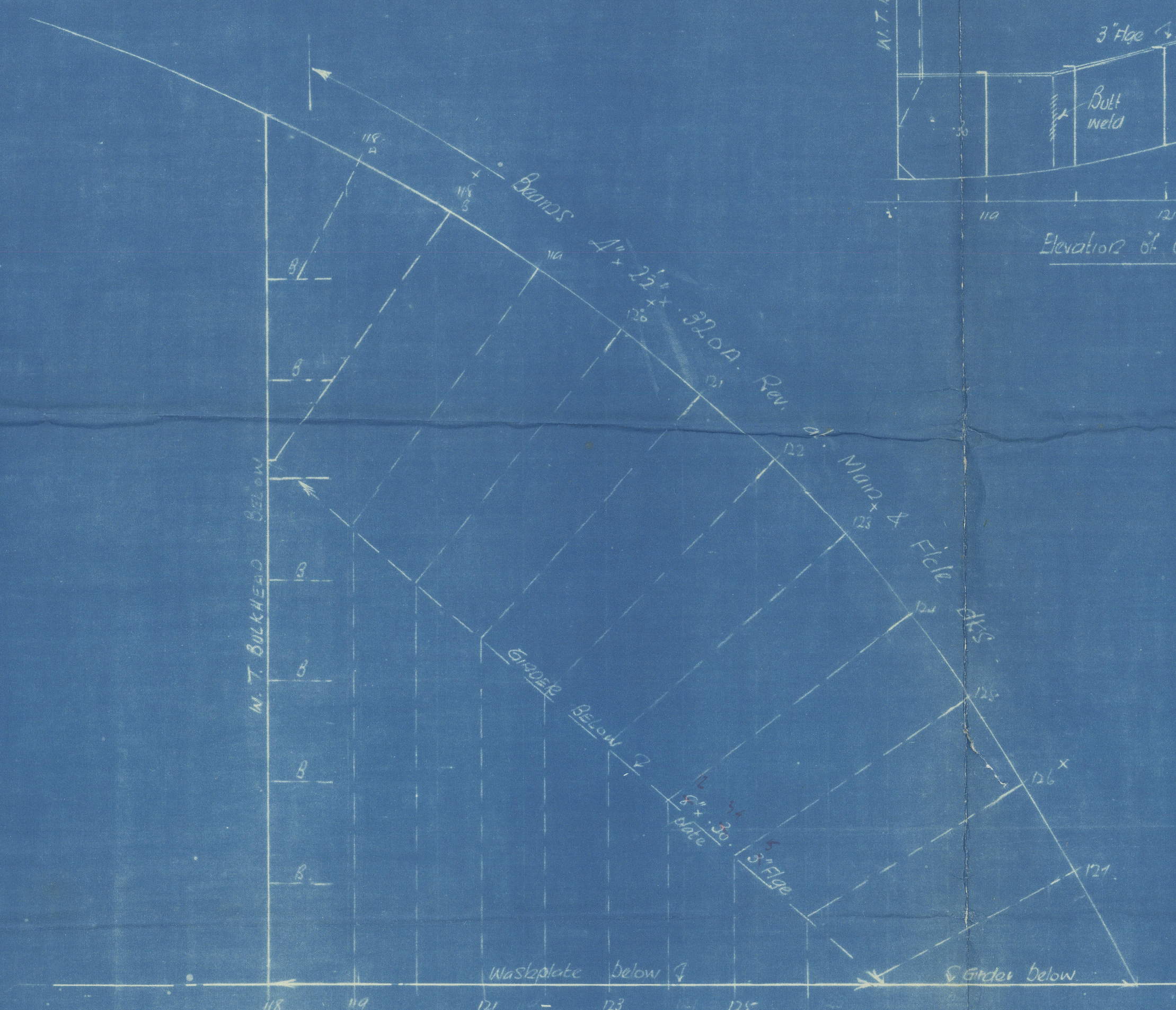
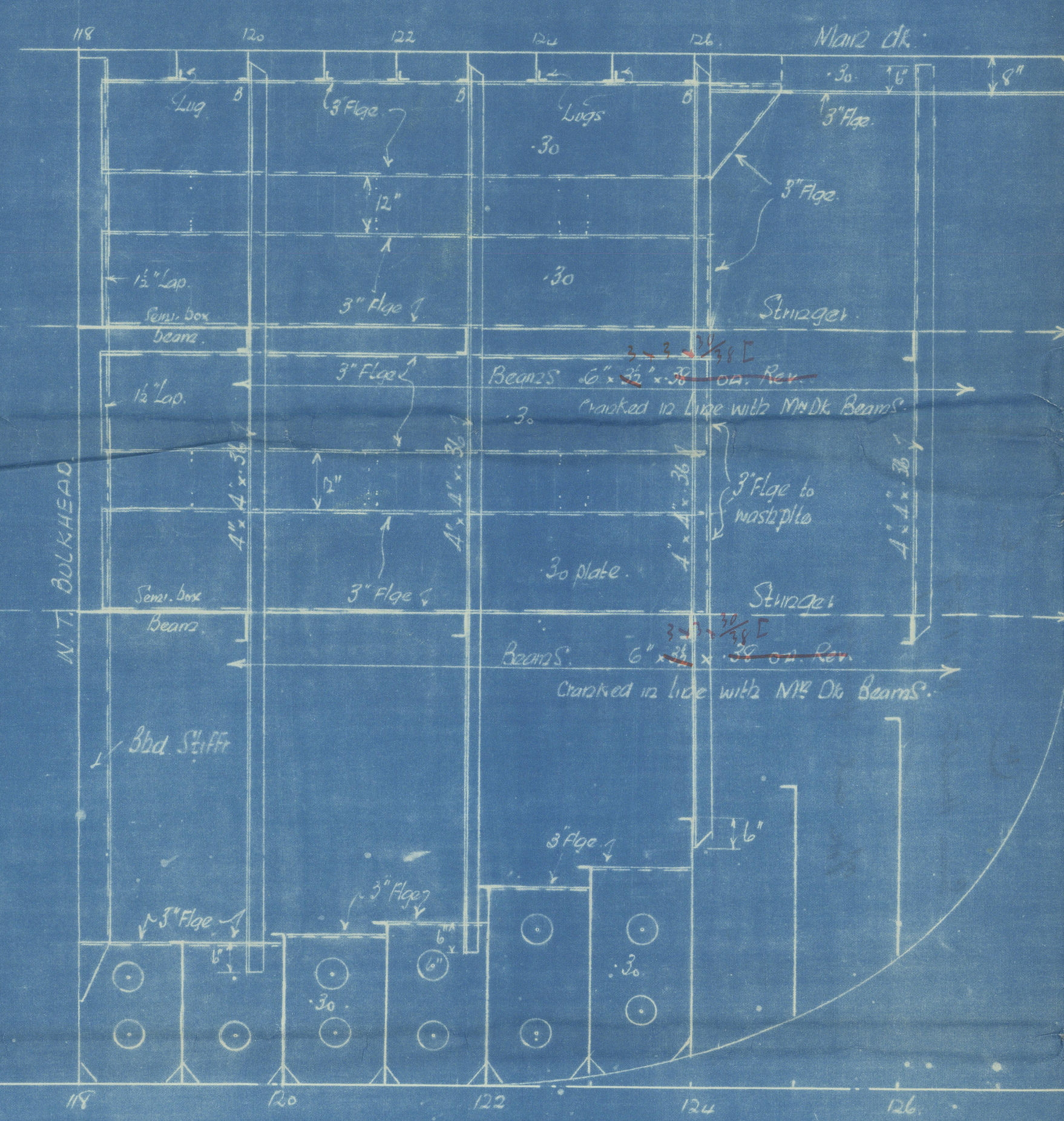
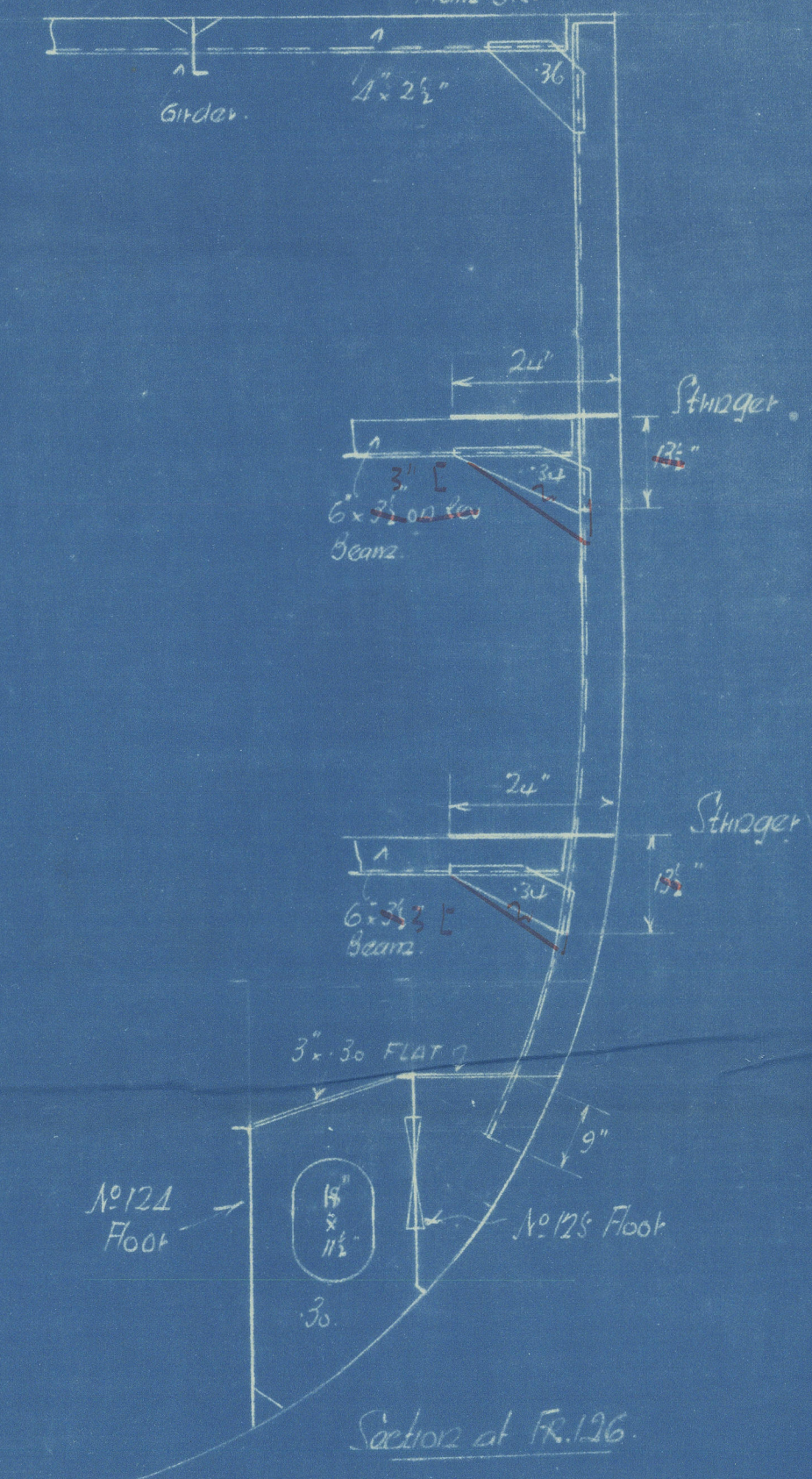
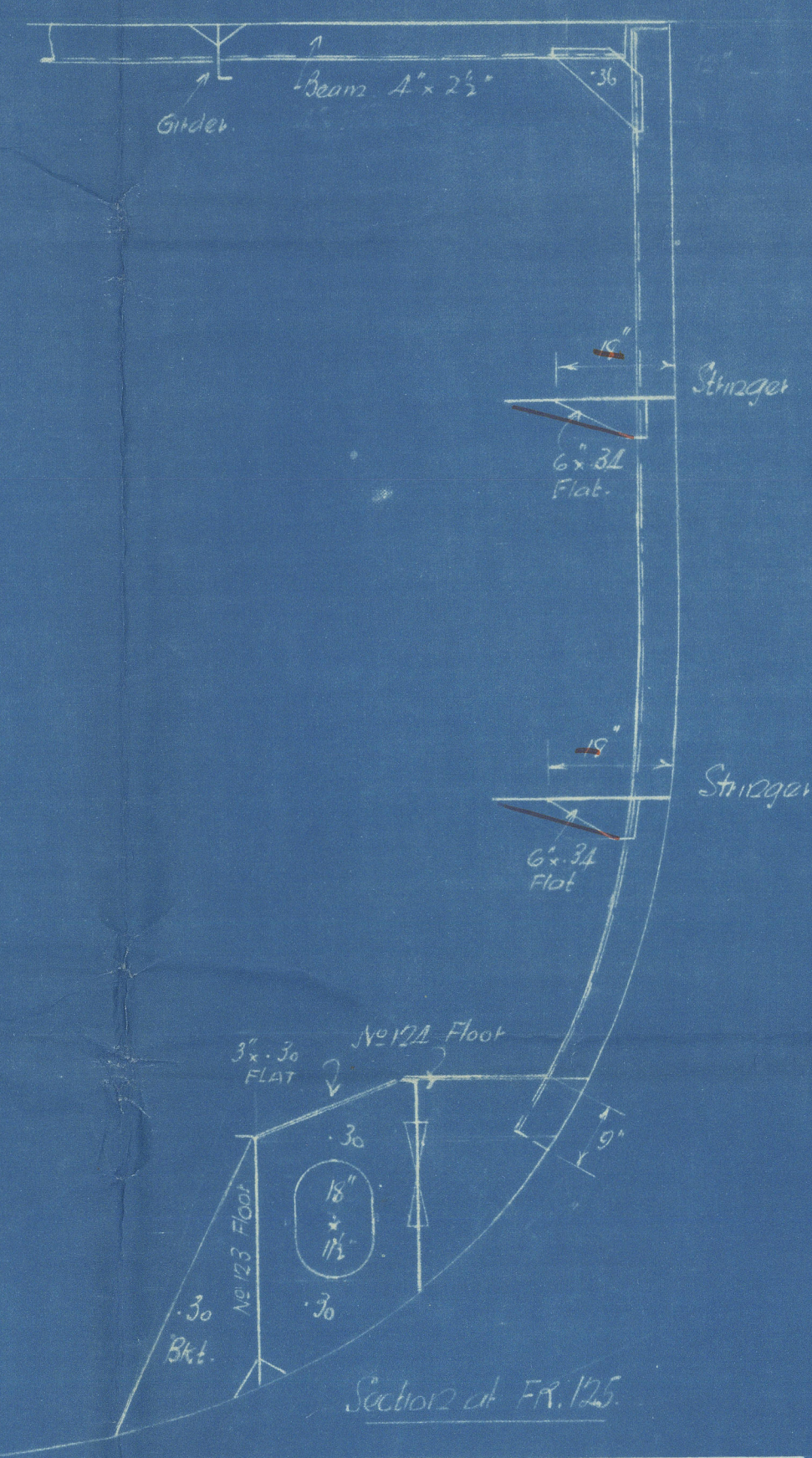
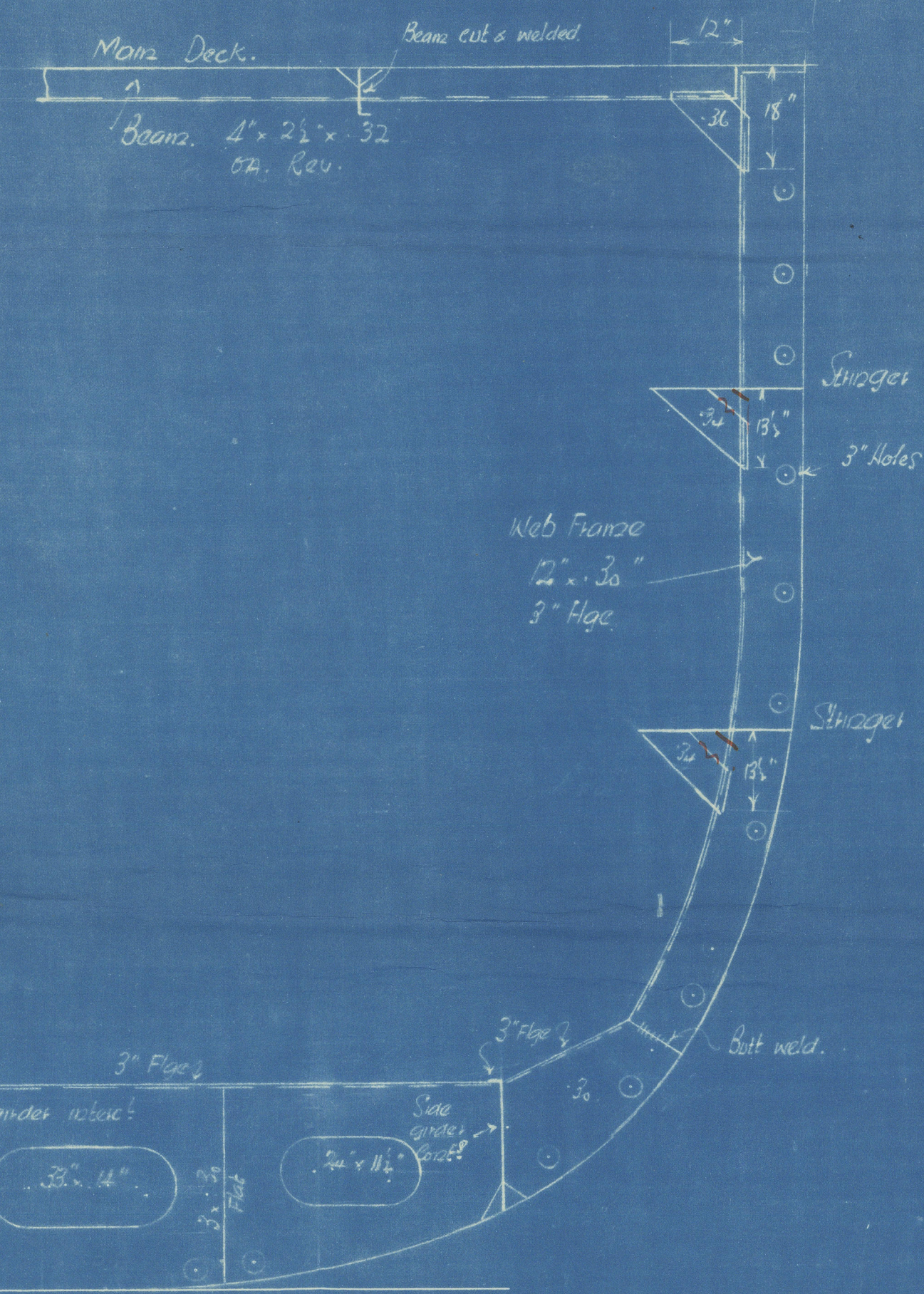
2/2/35



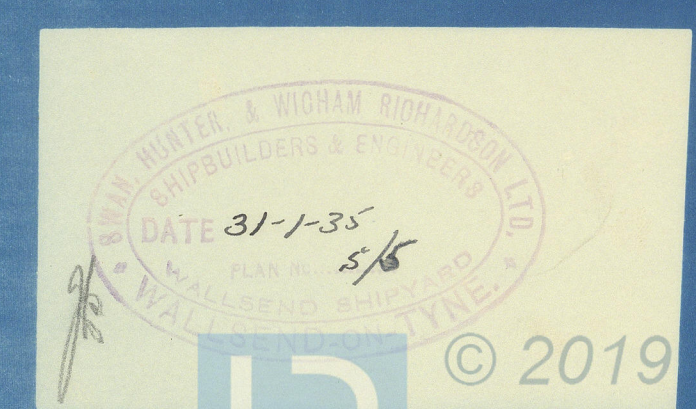
BOTTOM SHELL PLATING. 3/16" FOR 21" TO 31" AT END



FRAMES IN PILE 8" x 8" x 28' on Rev on ALT. PILE. (BUT NOT SET TO MAIN DECK)



WJ.
2.2.35





© 2019

Lloyd's Register
Foundation

(4)

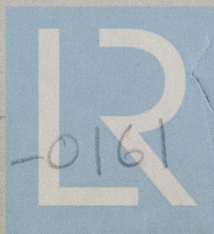
40.

Swan Hunter's No 1507

Note end framing

MS "JOSEPH MEDILL"
NEWCASTLE ON TYNE.

Report No. 92860.



© 2019

Lloyd's Register
Foundation

W475-0161