

M.S. "JOSEPH MEDILL"

ACTUAL SUPPORT OF SHIP IN DRY DOCK

SHIP LOADED AS BELOW

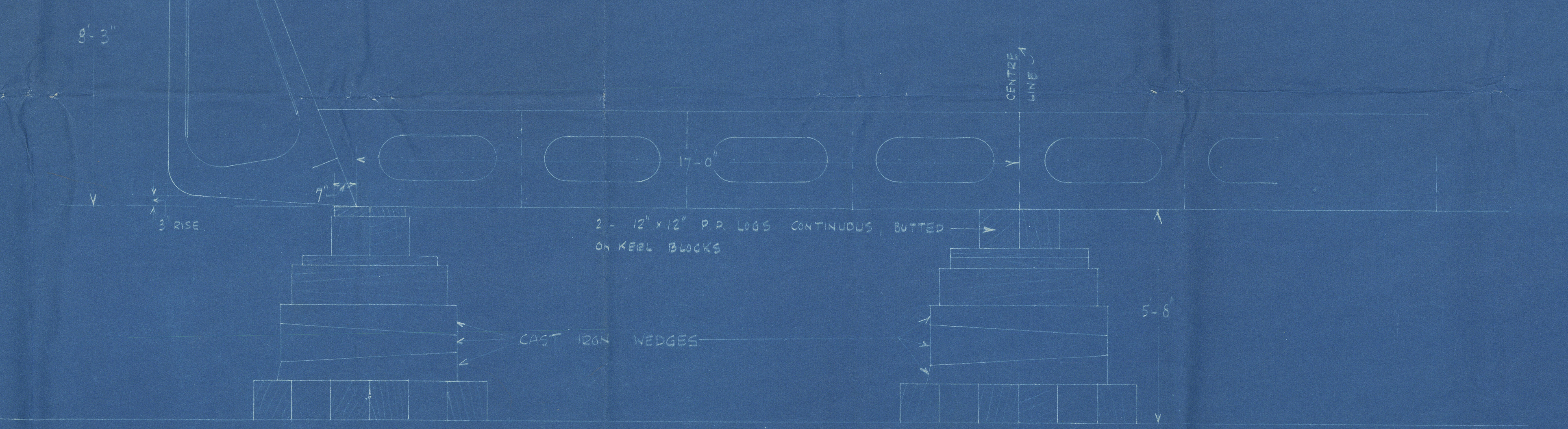
	TONS
WIGHT SHIP	764
COAL	2768
OL FUEL	92
FRESH WATER IN E.P.D.B.	28
F.W. TANKS	5
STORES ETC	10
WATER BALLAST IN N° 1 BILGE (P)	30
	3709

DRAUGHT	FORW	11-6"
	AFT	14-8"

AREA OF KEEL BLOCKS	424 SQ. FT.
" " BILGE	410
" " INTERMEDIATE	20
TOTAL AREA	864
LOAD ON BLOCKS/SQ. FT.	$\frac{3709 \text{ TONS}}{864 \text{ SQ. FT.}} = 4.3 \text{ TONS}$

SHIP DOCKED AT 8 A.M. THURS 8 AUG. 1935

UNDocked 10:30 P.M. FRIDAY 9 AUG. 1935



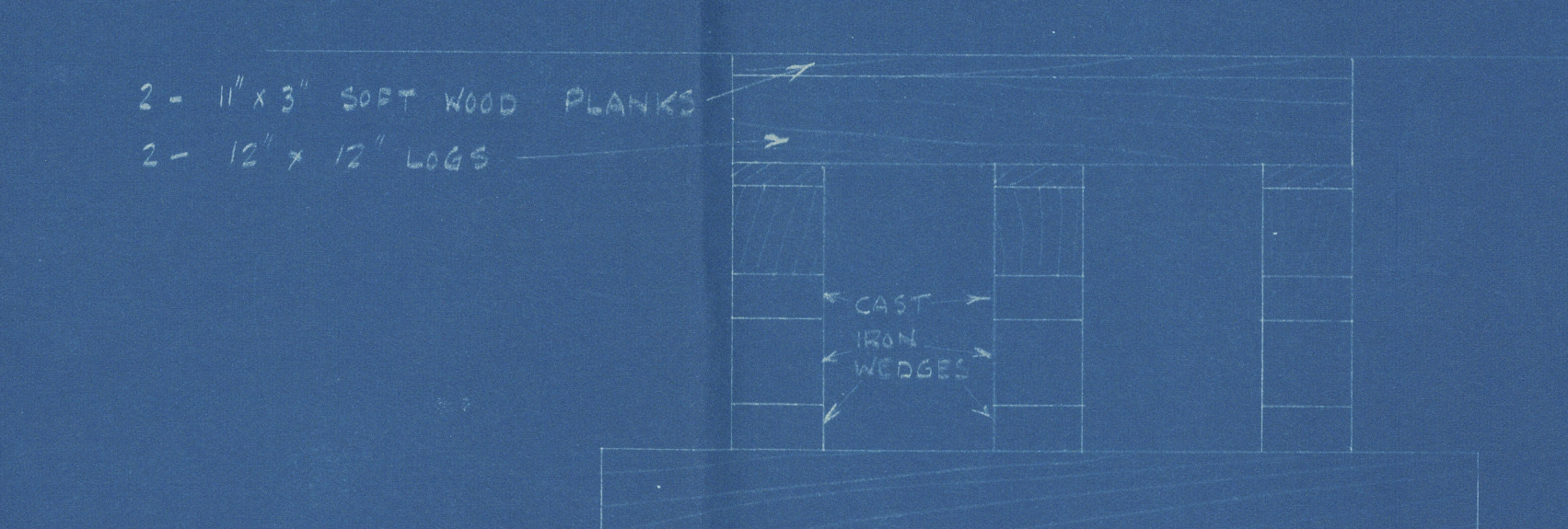
SECTION SHOWING KEEL & BILGE BLOCKS

SCALE $\frac{1}{8}$ = 1 FOOT

BREAKAGES (LONGITUDINAL)

POSITION OF SIGHT	N DOCK 8 AUG. 1935	OUT OF DOCK 10 AUG. 1935
1 FRAME 118 FORE PEAK BULK	ZERO	ZERO
2 " 111 AFT END ROLL HEAD	1/4"	ZERO
3 " 100 MIDDLE N° 1 HATCH	1/8"	1/4"
4 " 84 FORE END N° 2 "	1/8"	1/4"
5 " 68 BETWEEN N° 2 & 3 HATCH	1 1/2"	1 1/2"
6 " 48 AFT END N° 3 "	1"	1"
7 " 31 MIDDLE N° 4 "	1/2"	ZERO
8 " 13 TURE END PWB	ZERO	ZERO

TRANSVERSE SIGHTS BETWEEN 2 & 3 HATCHES 64/65 FWS
NO DEFLECTION



ELEVATION OF BILGE BLOCK

SCALE $\frac{1}{8}$ = 1 FOOT

JOSEPH MEDILL

S.H. & W.R. 1507.

DOCKING

95 "JOSEPH MEDILL"
NEWCASTLE ON TYNE.

Report No. 92860.

W478'-0160



© 2019

Lloyd's Register
Foundation