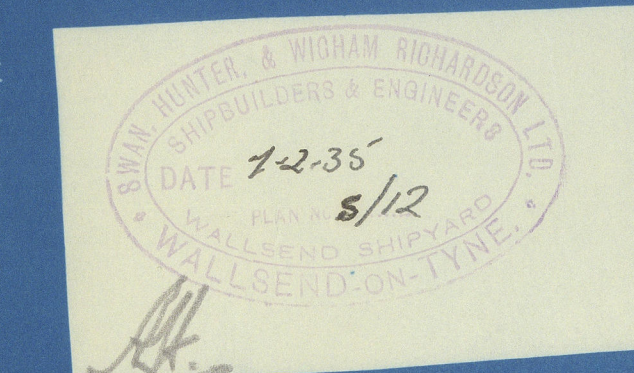
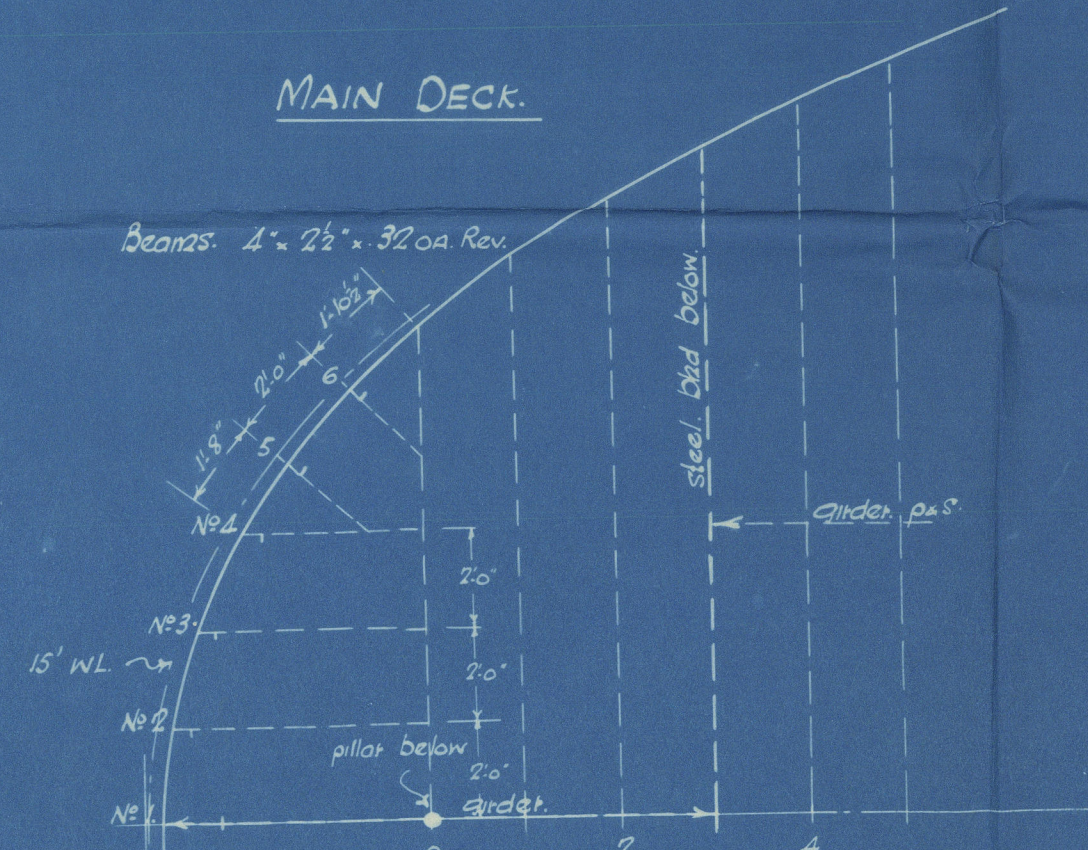
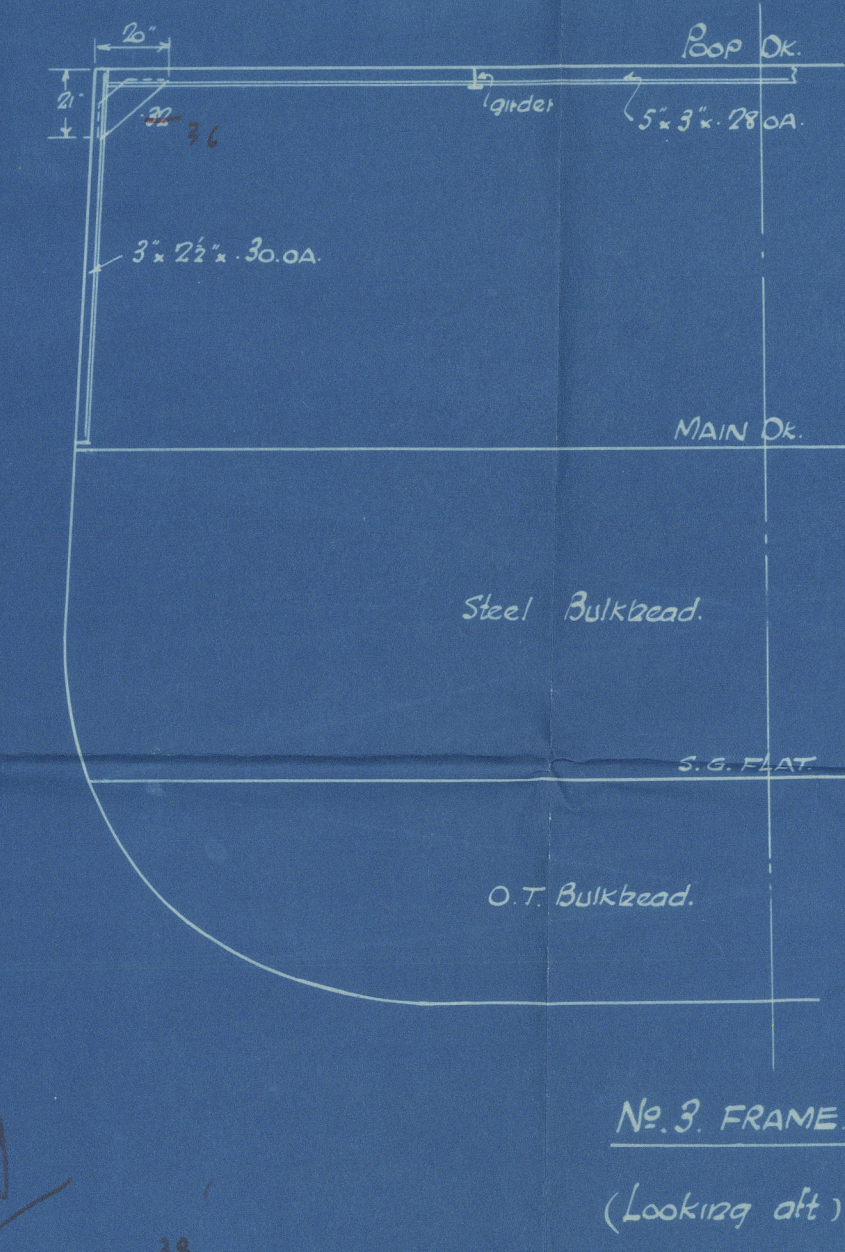
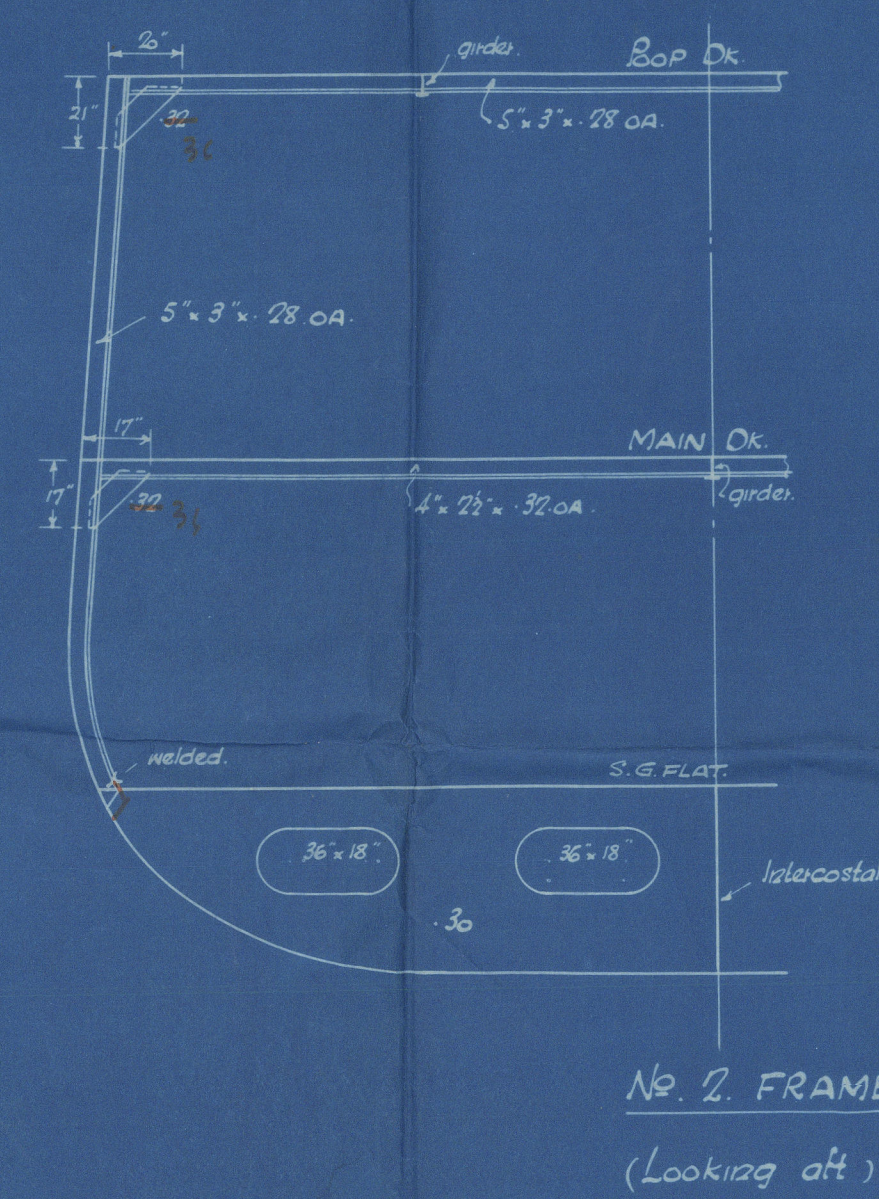
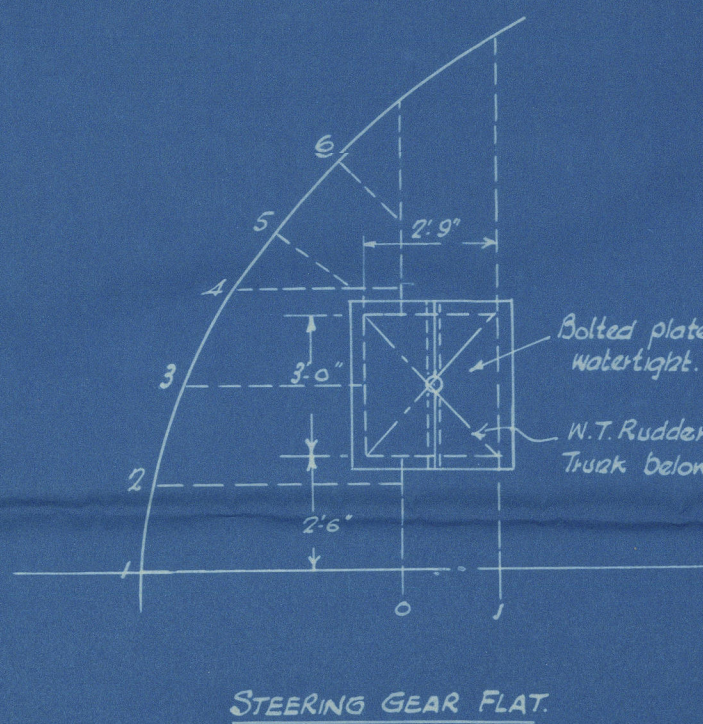
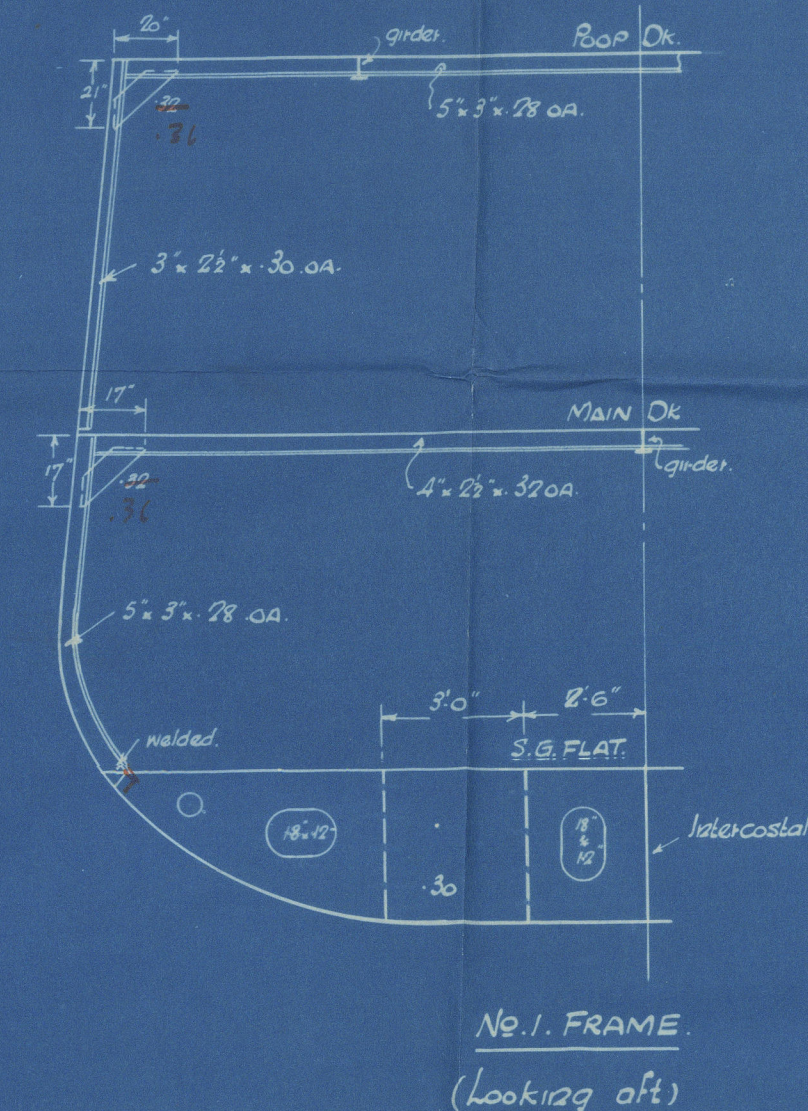
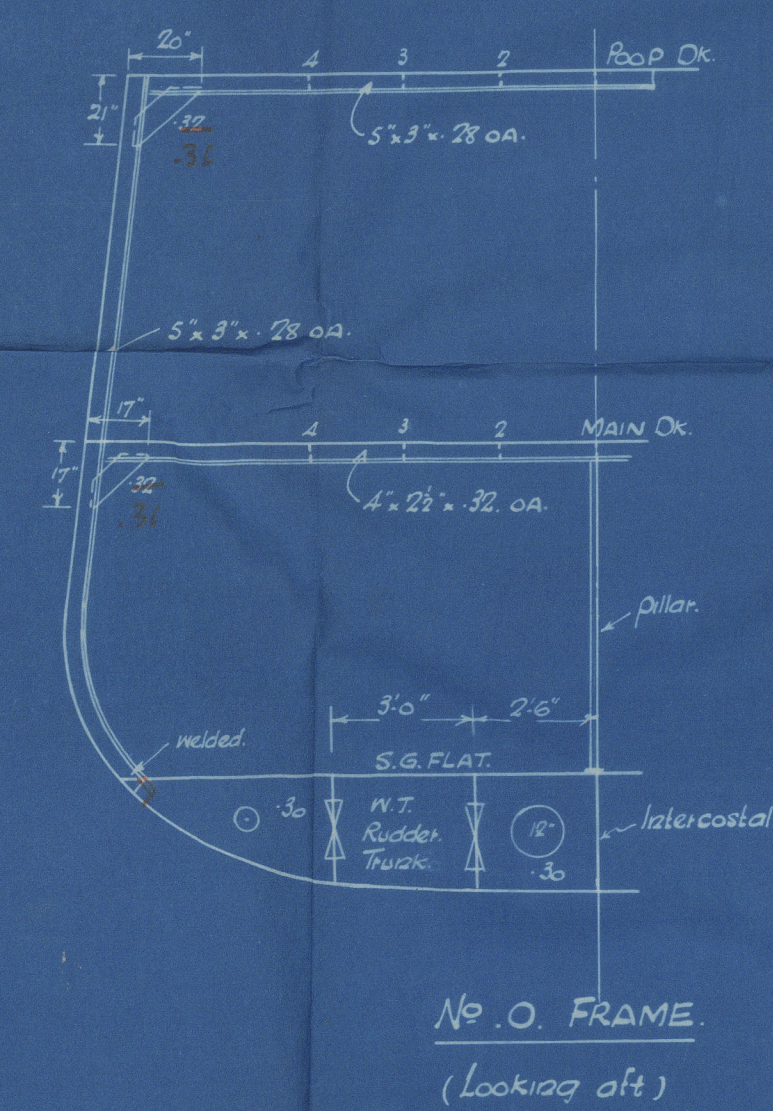
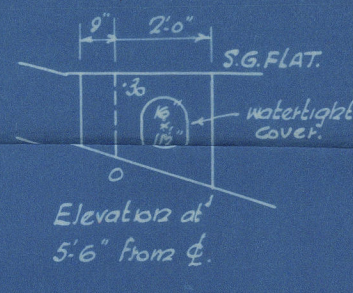
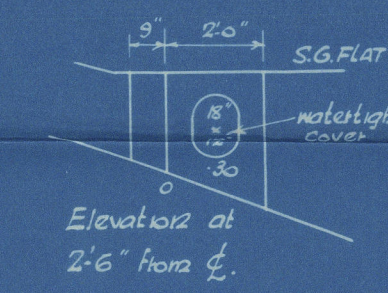
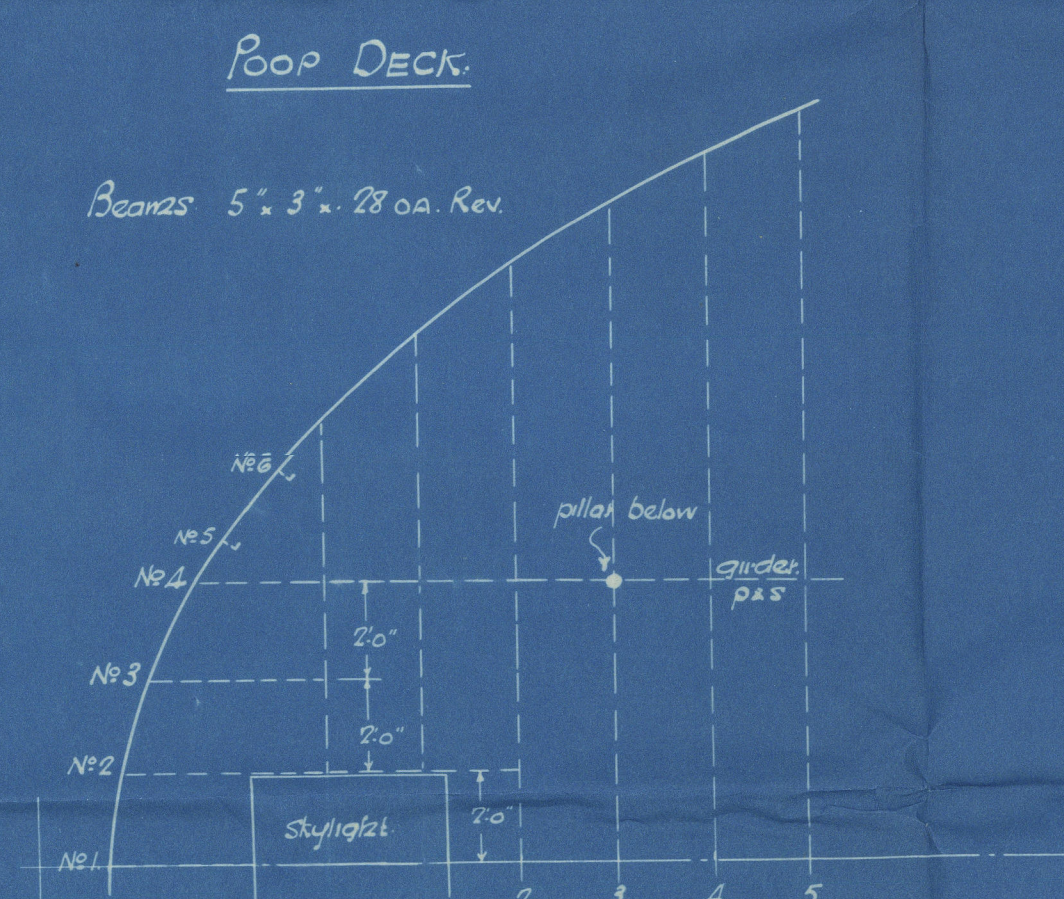
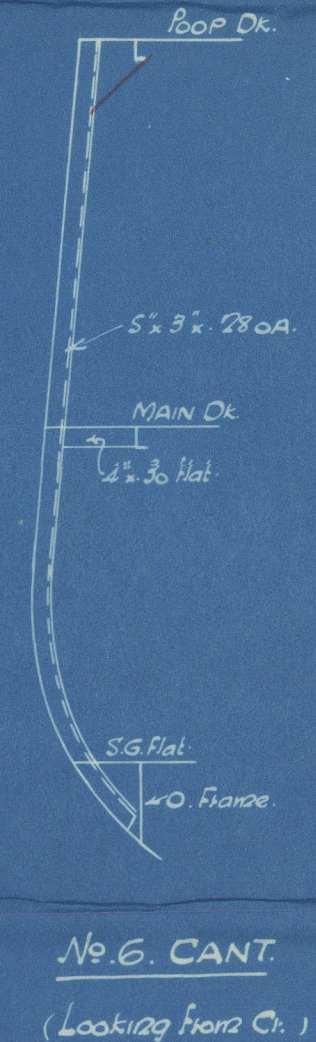
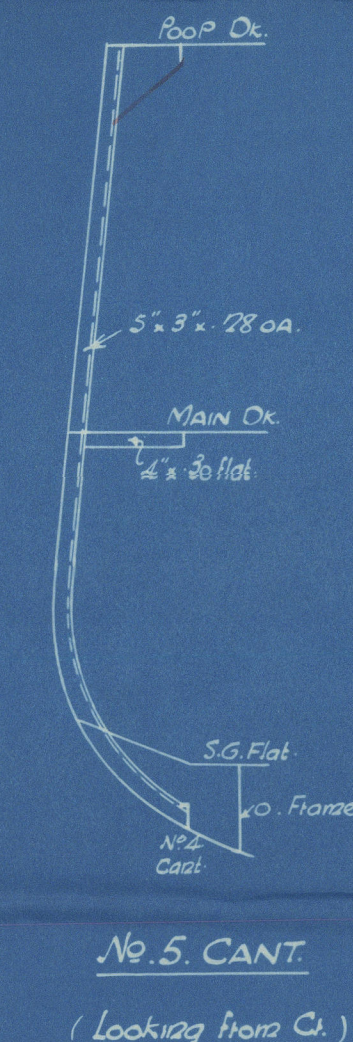
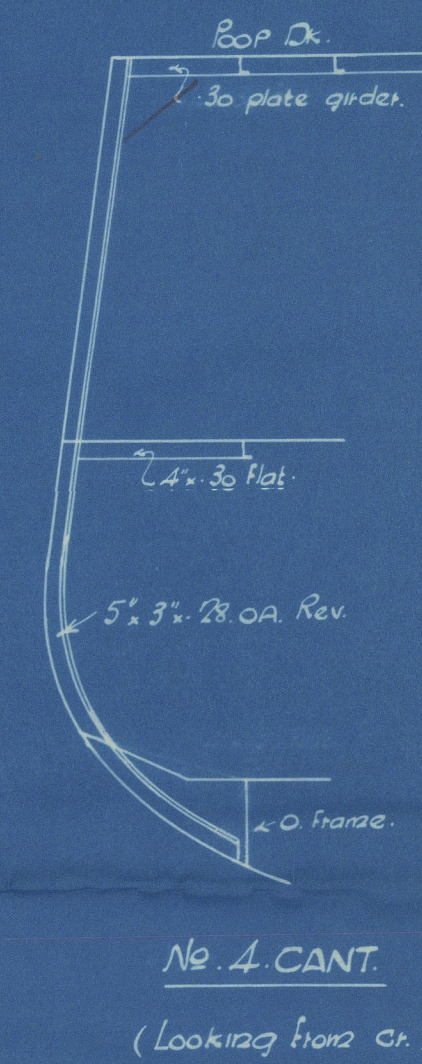
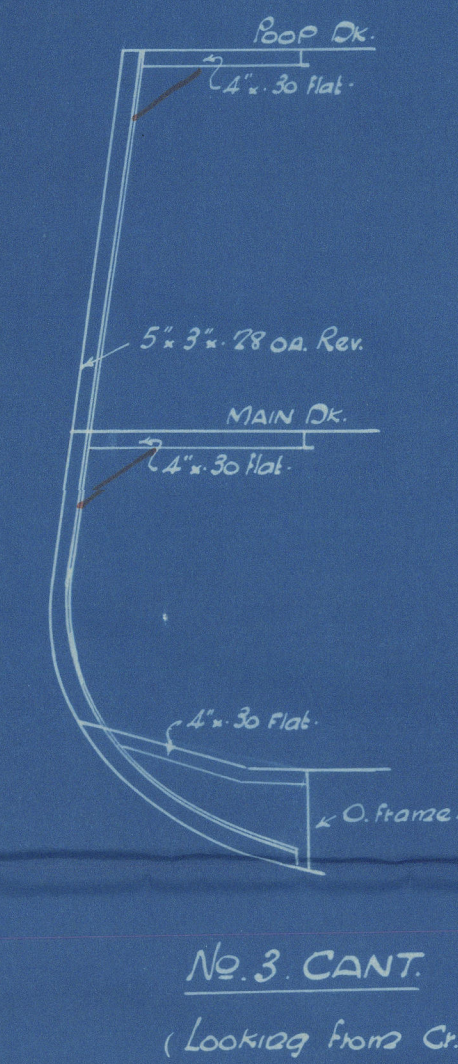
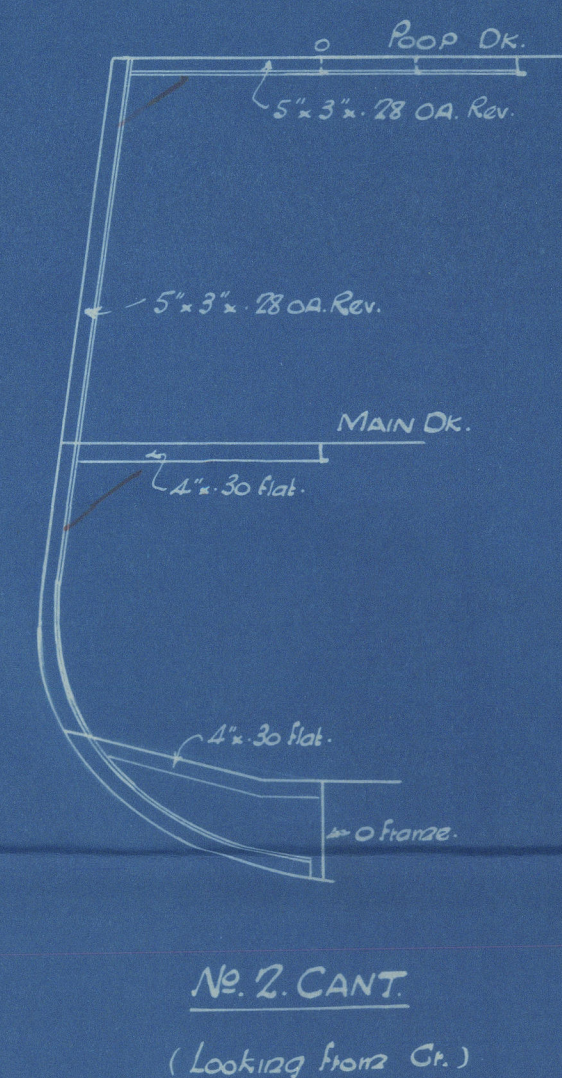
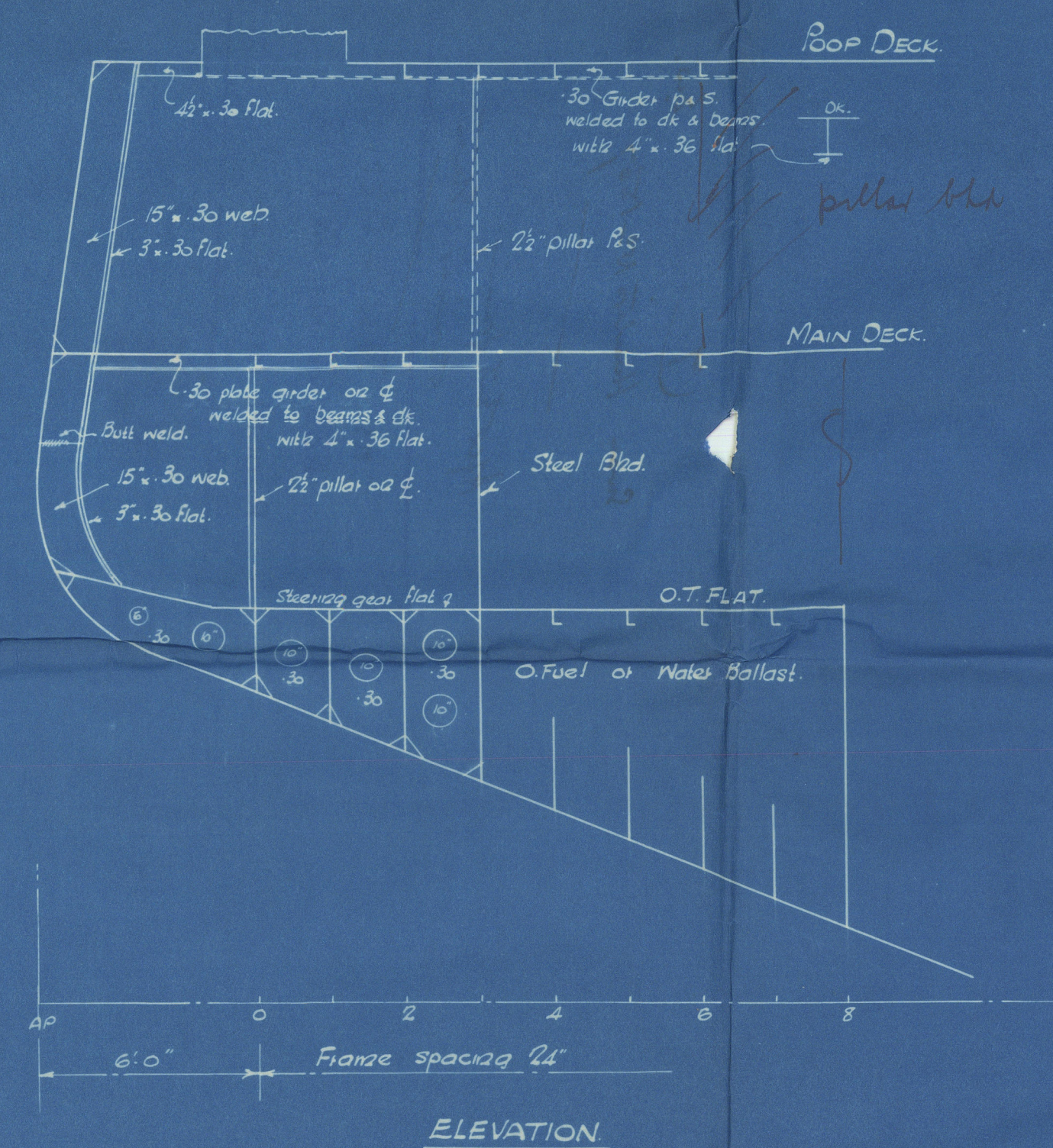


# No 1507. AFTER END FRAMING & CRUISER STERN.

SCALE:  $\frac{1}{4}" = 1 \text{ FOOT.}$

12/2/35





(7) Ew.  
Swan Hunters No 1507

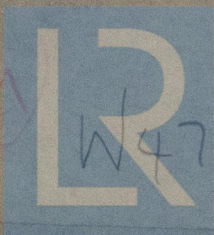
~~SH 1507~~  
After End framing  
Cruiser Stern

---

MS. "JOSEPH MEDILL"  
NEWCASTLE ON TYNE.

Report No. 92860.

---



© 2019

Lloyd's Register  
Foundation