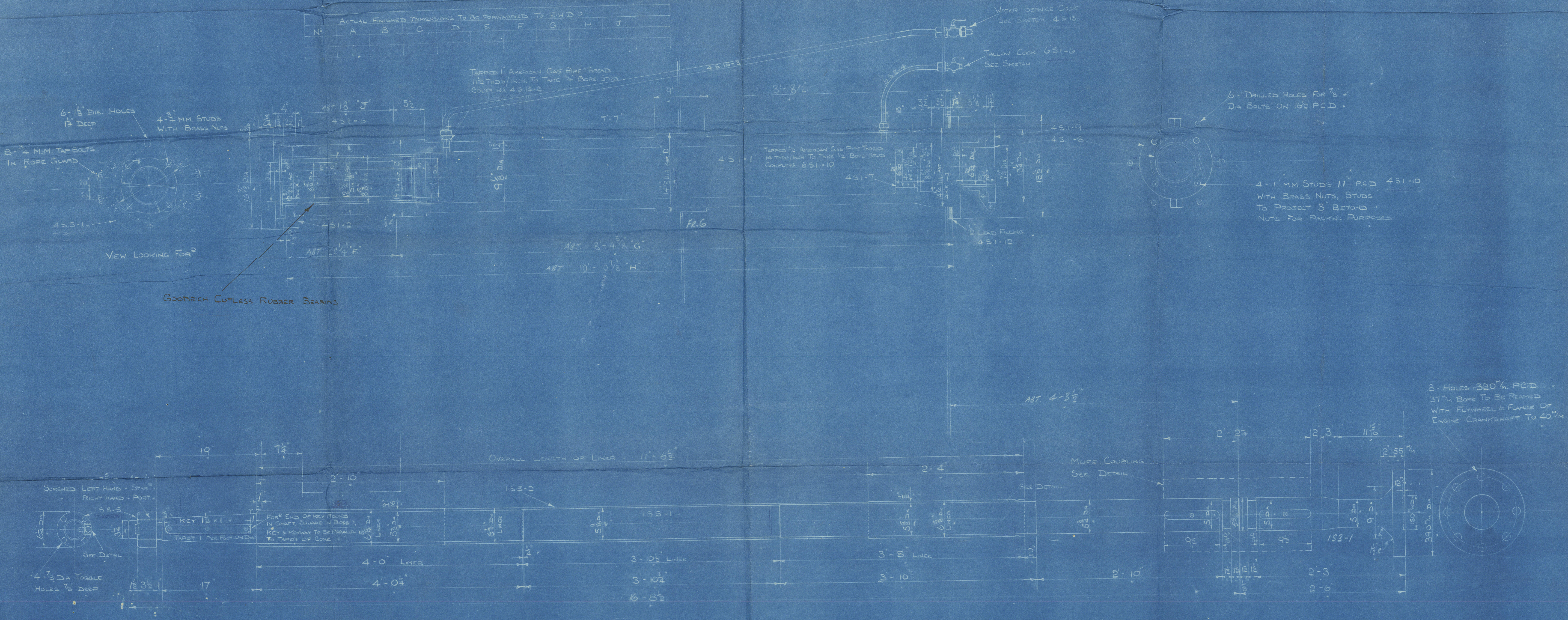


663

2 JAN 1916

ACTUAL FINISHED DIMENSIONS TO BE FORWARDED TO E.W.D.O.

Nº	A	B	C	D	E	F	G	H	J
1									



SYMBOL Nº	PORT	STAR	SPARE	DESCRIPTION	MAT	REMARKS	Nº REQ
1511-1	1511-1	1511-1		INTERMEDIATE SHAFT	ORDERED OUTSIDE		1
1511-2	1511-2	1511-2		PROPELLER SHAFT			1
1511-3	1511-3	1511-3		LINE			1
1511-4	1511-4	1511-4		KEY	M.S.	STOCK MATERIAL	1
1511-5	1511-5	1511-5		NUT	F.S.	ORDERED OUTSIDE	1
1511-6	1511-6	1511-6		LOCKING PLATE	M.S.	STOCK MATERIAL	1
1511-7	1511-7	1511-7		RUBBER RING	RUBBER	ORDERED OUTSIDE	1
1511-8	1511-8	1511-8		STERN TUBE	C.I.	PS. SEE SKETCH	1
1511-9	1511-9	1511-9		NUT	F.S.	ORDERED OUTSIDE	1
1511-10	1511-10	1511-10		STOP RING	O.B.G.	PS	1
1511-11	1511-11	1511-11		GOODRICH CUTLESS RUBBER BEARING		ORDERED OUTSIDE	1
1511-12	1511-12	1511-12		STERN TUBE BUSH (FOR 1511-8)	S.B.D.	PS. SEE SKETCH	1
1511-13	1511-13	1511-13		GLAND BUSH	S.B.D.		1
1511-14	1511-14	1511-14		STERN TUBE GLAND	C.I.	PS. IN HALVES	1
1511-15	1511-15	1511-15		STUDS	M.M.	STOCK BAR	4
1511-16	1511-16	1511-16		LEAD FOR PEAK BUSH		STOCK MAT	1
1511-17	1511-17	1511-17		ROPE GUARD (IN HALVES)	M.S.	STOCK PLATE	1
1511-18	1511-18	1511-18		MUFF COUPLING	F.S.	ORDERED OUTSIDE	1
1511-19	1511-19	1511-19		KEYS	STEEL	STOCK MAT	2
1511-20	1511-20	1511-20		BOLTS	M.S.	STOCK BAR	12
1511-21	1511-21	1511-21		NUTS			12
1511-22	1511-22	1511-22		STUD COUPLING FOR WATER SERVICE	B.S.	STOCK BAR	1
1511-23	1511-23	1511-23		OIL MUFF COUPLING	B.S.		1
1511-24	1511-24	1511-24		BOLTS, STUDS, NUTS, ETC.	M.S.	STOCK	1
1511-25	1511-25	1511-25					1
1511-26	1511-26	1511-26					1
1511-27	1511-27	1511-27					1
1511-28	1511-28	1511-28					1
1511-29	1511-29	1511-29					1
1511-30	1511-30	1511-30					1
1511-31	1511-31	1511-31					1
1511-32	1511-32	1511-32					1
1511-33	1511-33	1511-33					1
1511-34	1511-34	1511-34					1
1511-35	1511-35	1511-35					1
1511-36	1511-36	1511-36					1
1511-37	1511-37	1511-37					1
1511-38	1511-38	1511-38					1
1511-39	1511-39	1511-39					1
1511-40	1511-40	1511-40					1
1511-41	1511-41	1511-41					1
1511-42	1511-42	1511-42					1
1511-43	1511-43	1511-43					1
1511-44	1511-44	1511-44					1
1511-45	1511-45	1511-45					1
1511-46	1511-46	1511-46					1
1511-47	1511-47	1511-47					1
1511-48	1511-48	1511-48					1
1511-49	1511-49	1511-49					1
1511-50	1511-50	1511-50					1
1511-51	1511-51	1511-51					1
1511-52	1511-52	1511-52					1
1511-53	1511-53	1511-53					1
1511-54	1511-54	1511-54					1
1511-55	1511-55	1511-55					1
1511-56	1511-56	1511-56					1
1511-57	1511-57	1511-57					1
1511-58	1511-58	1511-58					1
1511-59	1511-59	1511-59					1
1511-60	1511-60	1511-60					1
1511-61	1511-61	1511-61					1
1511-62	1511-62	1511-62					1
1511-63	1511-63	1511-63					1
1511-64	1511-64	1511-64					1
1511-65	1511-65	1511-65					1
1511-66	1511-66	1511-66					1
1511-67	1511-67	1511-67					1
1511-68	1511-68	1511-68					1
1511-69	1511-69	1511-69					1
1511-70	1511-70	1511-70					1
1511-71	1511-71	1511-71					1
1511-72	1511-72	1511-72					1
1511-73	1511-73	1511-73					1
1511-74	1511-74	1511-74					1
1511-75	1511-75	1511-75					1
1511-76	1511-76	1511-76					1
1511-77	1511-77	1511-77					1
1511-78	1511-78	1511-78					1
1511-79	1511-79	1511-79					1
1511-80	1511-80	1511-80					1
1511-81	1511-81	1511-81					1
1511-82	1511-82	1511-82					1
1511-83	1511-83	1511-83					1
1511-84	1511-84	1511-84					1
1511-85	1511-85	1511-85					1
1511-86	1511-86	1511-86					1
1511-87	1511-87	1511-87					1
1511-88	1511-88	1511-88					1
1511-89	1511-89	1511-89					1
1511-90	1511-90	1511-90					1
1511-91	1511-91	1511-91					1
1511-92	1511-92	1511-92					1
1511-93	1511-93	1511-93					1
1511-94	1511-94	1511-94					1
1511-95	1511-95	1511-95					1
1511-96	1511-96	1511-96					1
1511-97	1511-97	1511-97					1
1511-98	1511-98	1511-98					1
1511-99	1511-99	1511-99					1
1511-100	1511-100	1511-100					1

Swan Hunter & Wigham
Richardson Ltd

Ship No 1507

Installation of M.A.N
Engines No 1484

hwc Ltr 29.4.35

ms "JOSEPH MEDILL"
NEWCASTLE ON TYNE.
Report No. 92860.

W475-01574

26



© 2019

Lloyd's Register
Foundation