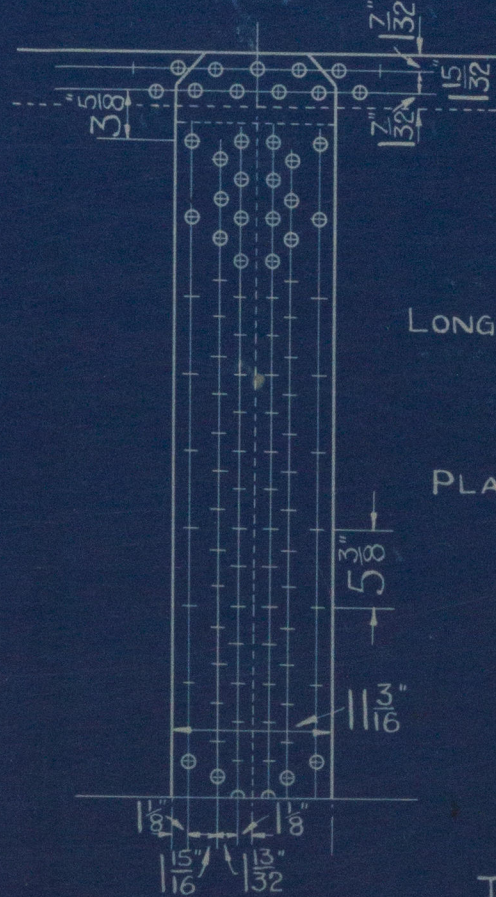
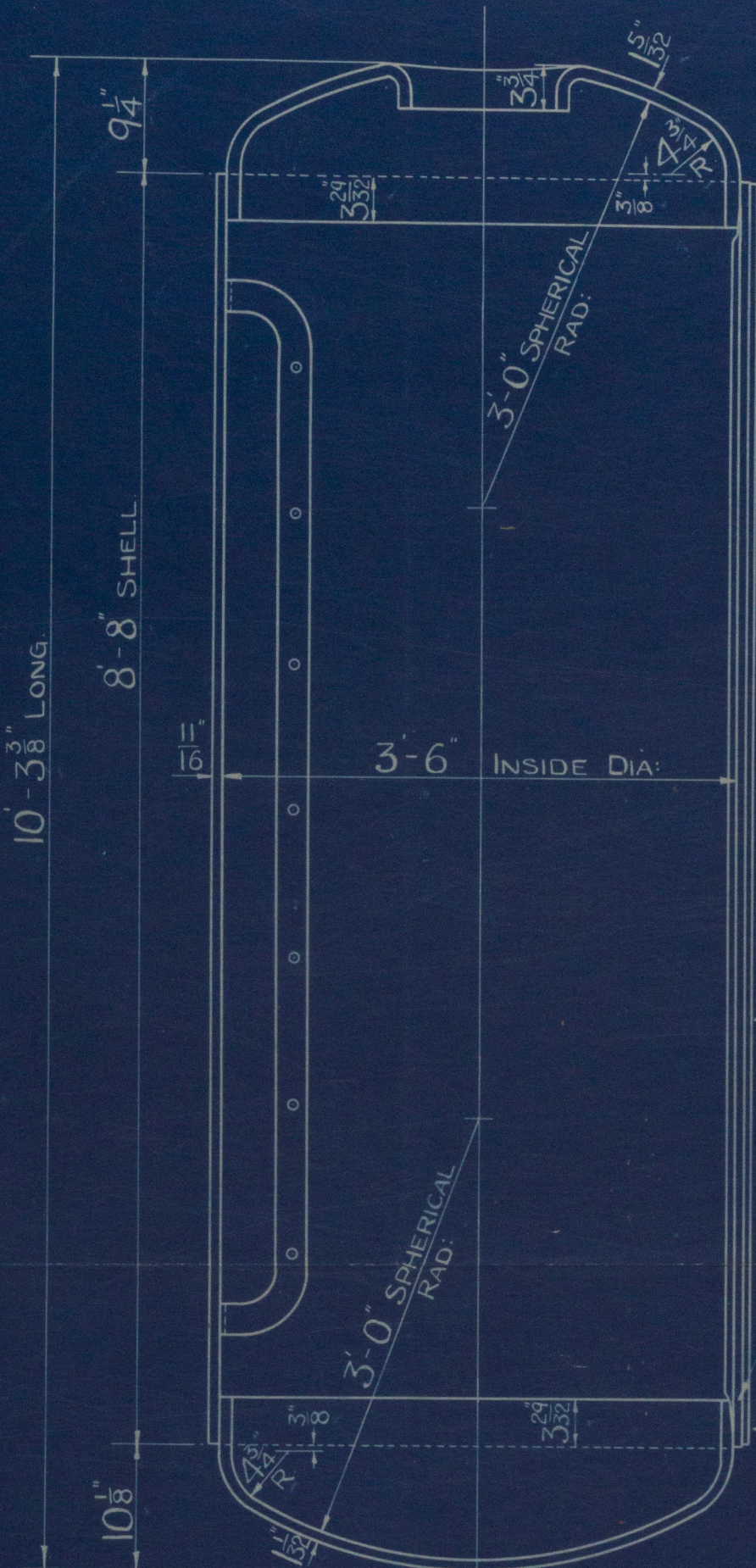


26 APR 1946  
NAVY DEPT  
BUREAU OF SHIPBUILDING  
BOSTON

CIRCUM<sup>L</sup> JOINT  $\frac{13}{16}$ " DIA: HOLES  $\frac{25}{32}$ " RIVETS  
2.793" PITCH, 48 PITCHES.  
PLATE = 70.90% RIVET = 42.79%



LONG<sup>L</sup> JOINT  $\frac{3}{4}$ " DIA: HOLES  $\frac{11}{16}$ " RIVETS  $5\frac{3}{8}$ " PITCH  
HYDRAULIC MACHINE RIVETED  
ALL HOLES DRILLED IN POSITION  
PLATE = 86.04%, RIVET = 88.73%, COMBINED = 89.83%.  
OUTER BUTTSTRAP =  $\frac{17}{32}$ " TH<sup>K</sup>.  
INNER BUTTSTRAP =  $\frac{21}{32}$ " TH<sup>K</sup>.

TO BOARD OF TRADE & LLOYDS SURVEY.  
WORKING PRESSURE = 427 LBS/IN<sup>2</sup>.  
TEST PRESSURE = 691 LBS/IN<sup>2</sup>.  
CAPACITY OF EACH TANK = 90 CUB: FT.

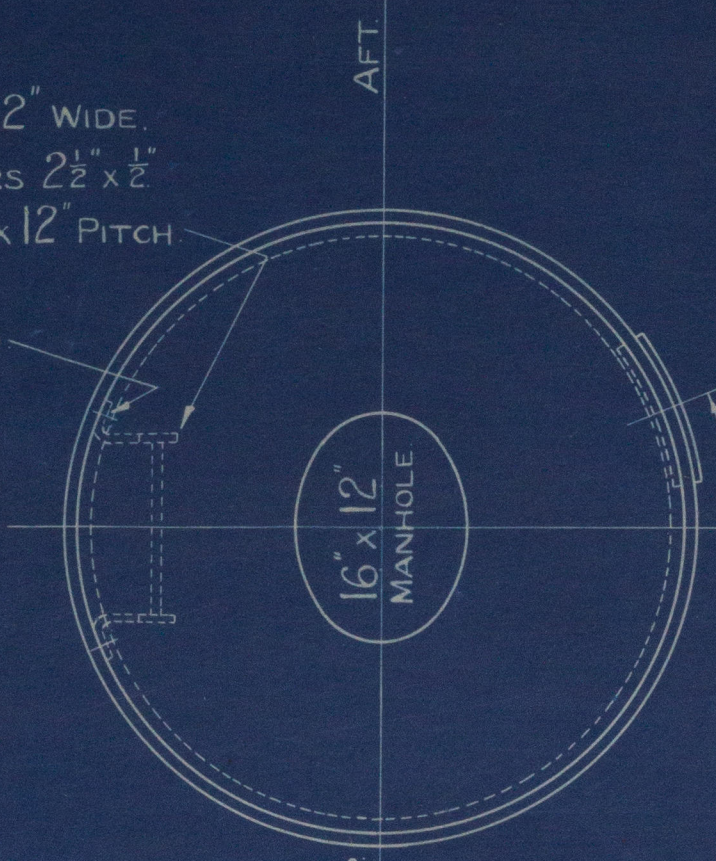
TENSILE STRENGTH OF MAT<sup>L</sup>.  
CYL: SHELL PLATES. 29 TO 33 TONS/IN<sup>2</sup>.  
END PLATES & MANHOLE DOORS. 26 - 30 TONS/IN<sup>2</sup>.  
RIVET BARS. 26 - 30 TONS/IN<sup>2</sup>.

ENCLOSURE  
NO 643  
"JUST SO"

SECTION LOOKING AFT.

PORT SYMBOL	STAR <sup>D</sup> SYMBOL	DESCRIPTION	MAT <sup>L</sup>	N <sup>O</sup> REQ <sup>D</sup> EACH SYMBOL	LENGTH	WIDTH	THICK	REMARKS.
31H1-1	31H2-1	SHELL	STEEL	1	11'-3"	8'-8 1/2"	11/16"	
-2	-2	OUTER STRAP	"	1	8'-8 1/2"	1'-0"	17/32"	
-3	-3	INNER "	"	1	8'-3 1/4"	11 3/4"	21/32"	
-4	-4	END PLAIN.	"	1	ORDERED OUTSIDE.			
-5	-5	" MANHOLE.	"	1	"	"	"	
-6	-6	MANHOLE DOOR	"	1	1'-8 1/2"	1'-4 1/2"	1 3/8"	
-7	-7	" " DOGS.	"	2				STOCK.
-8	-8	RIVETS CIR <sup>L</sup> SEAM PLAIN END	"					
-9	-9	" " MANHOLE "	"					
-10	-10	" " JOINTERS.	"					
-11	-11	" " LONG <sup>L</sup> JOINT.	"					
-12	-12	LADDER.	"	1				STOCK MAT <sup>L</sup>
/100	/100	SPECIAL BOLTS, NUTS, ETC.	"	AS REQ <sup>D</sup>				
/506	/506	WATER TEST.	"	"				
/507	/507	PAINTING.	"	"				
/510	/510	STUDS, NUTS ETC. [EXCEPT SPECIAL]	"	"				

LADDER 12" WIDE.  
SIDE BARS 2 1/2" x 1"  
RUNGS 8" DIA: x 12" PITCH.



PLAN VIEW.

# STARTING AIR TANKS.

SCALE: 1" = 1 FOOT.

ONE THUS FOR PORT.  
ONE TO OPP: HAND FOR STAR<sup>D</sup>.

4232.

G.L.E.  
D.H.  
R.H.

NO 1484  
DATE 23.4.55



# Starting Air Tanks

Swan Hunter & Wigham  
Richardson & Co.

Ship 1507

Inquiry 1484

kwc ltr 24.4.35

ms. "JOSEPH MEDILL"

NEWCASTLE ON TYNE.

Report No. 92660.

W475 - 0143

P: HAND FOR STAR

© 2019

Lloyd's Register

IN.	DATE
1484	23.4.35