

NO 1507 SHIP.

21-1-35

MIDSHIP SECTION.

SCALE : $\frac{1}{2} = 1:0"$

TO CLASS LLOYD'S. A¹

FOR SERVICE AT 14'0" DRAFT IN FRESH WATER.

FROM THE GREAT LAKES TO THE GULF OF ST LAWRENCE. (with 8 1/2' draft at extreme draught of 14'0")

LENGTH OVERALL = 259' 0"

BREADTH MLD AT BASE LINE = 43' 6"

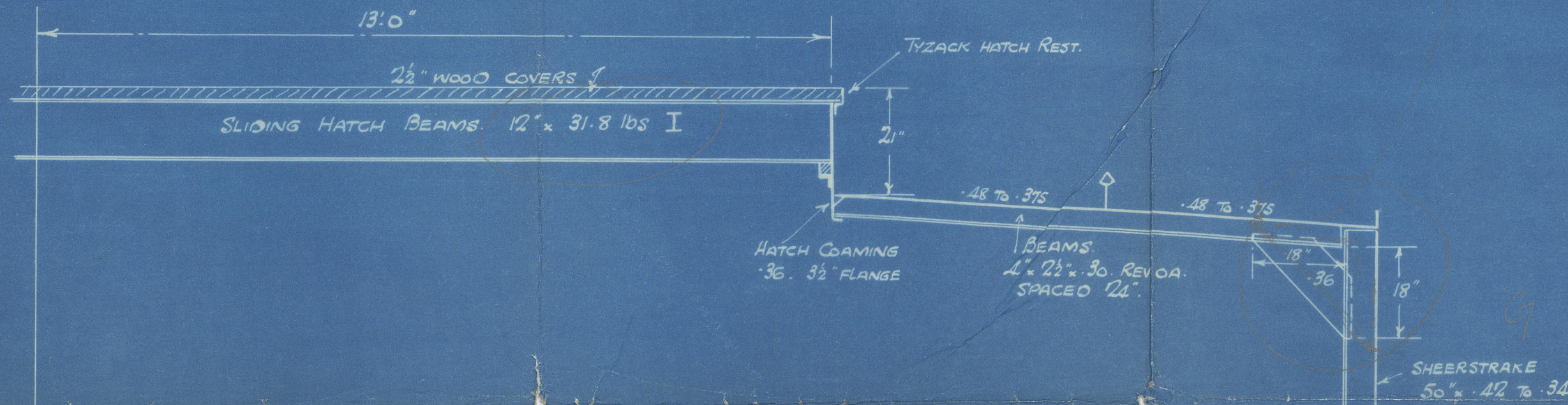
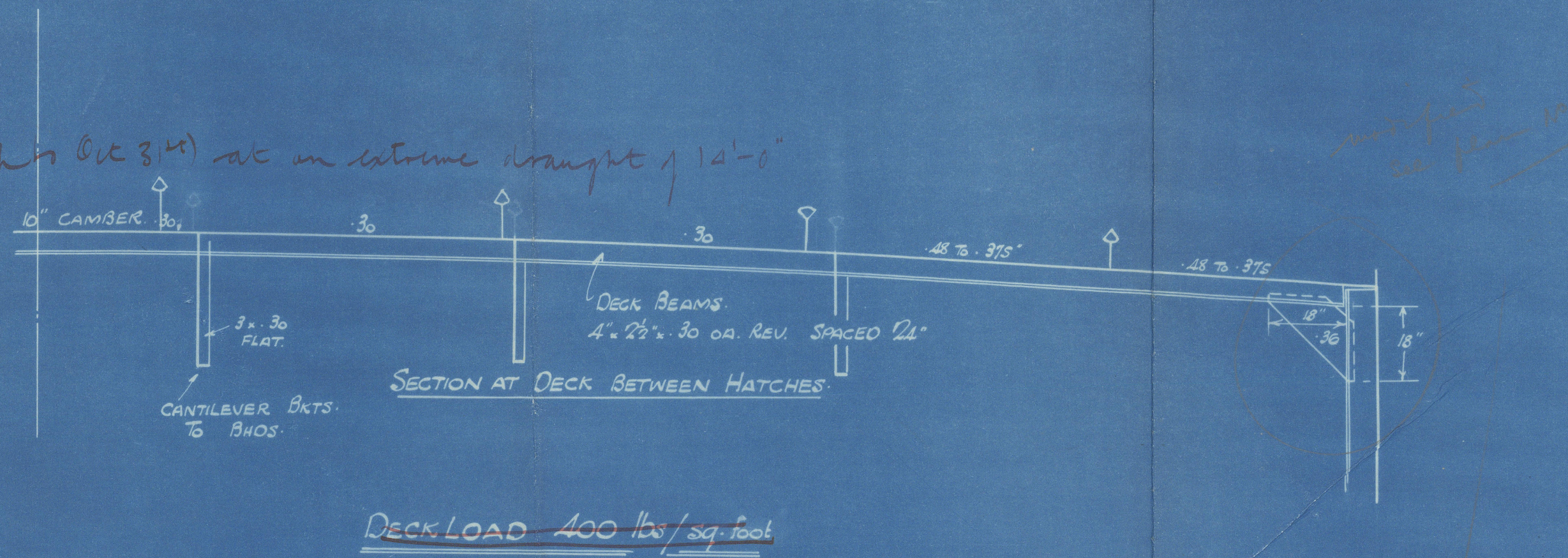
" " " DECK = 43' 10"

DEPTH MLD = 22' 0"

ALL WELDED CONSTRUCTION.

See H.M. Sec.
as built

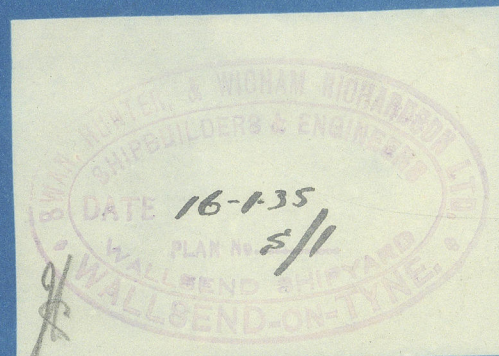
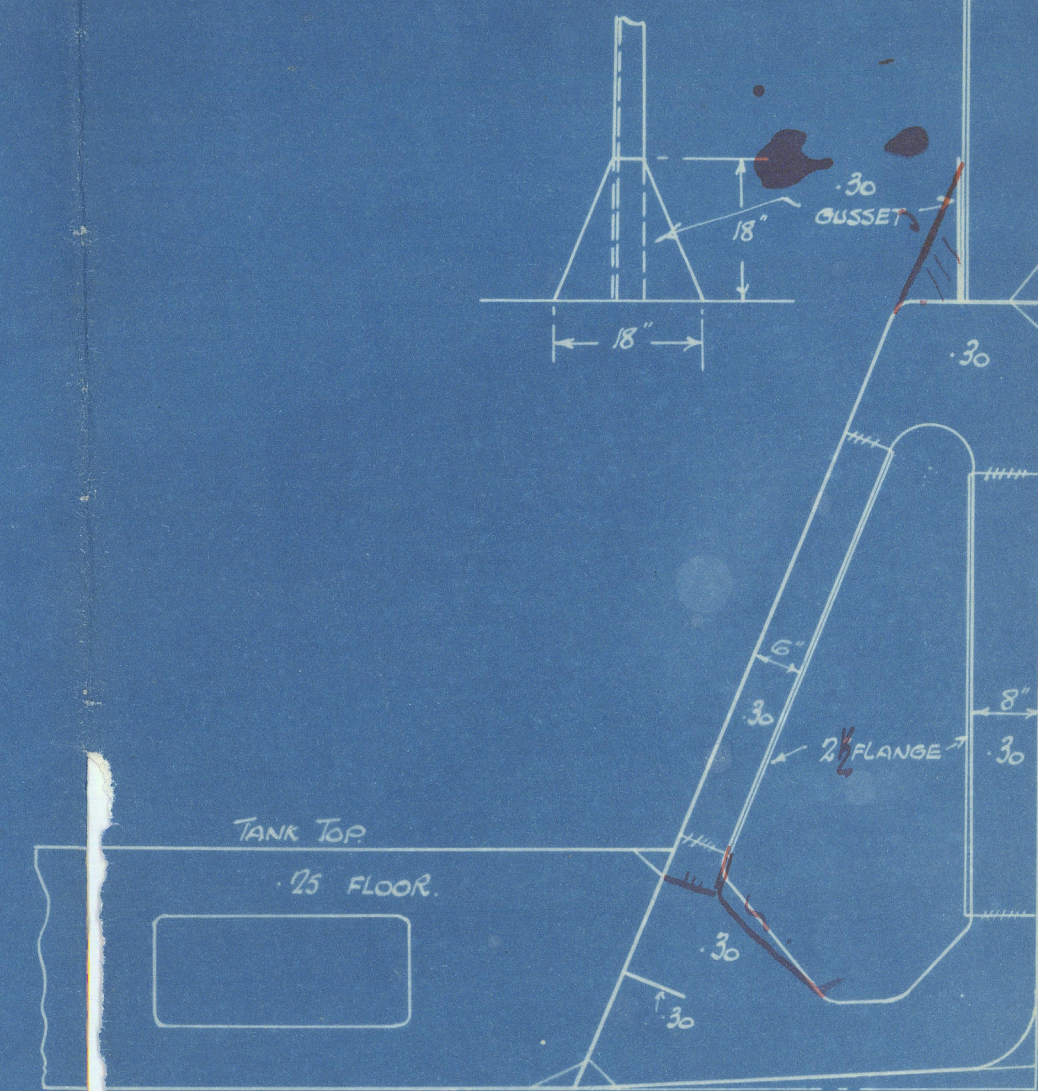
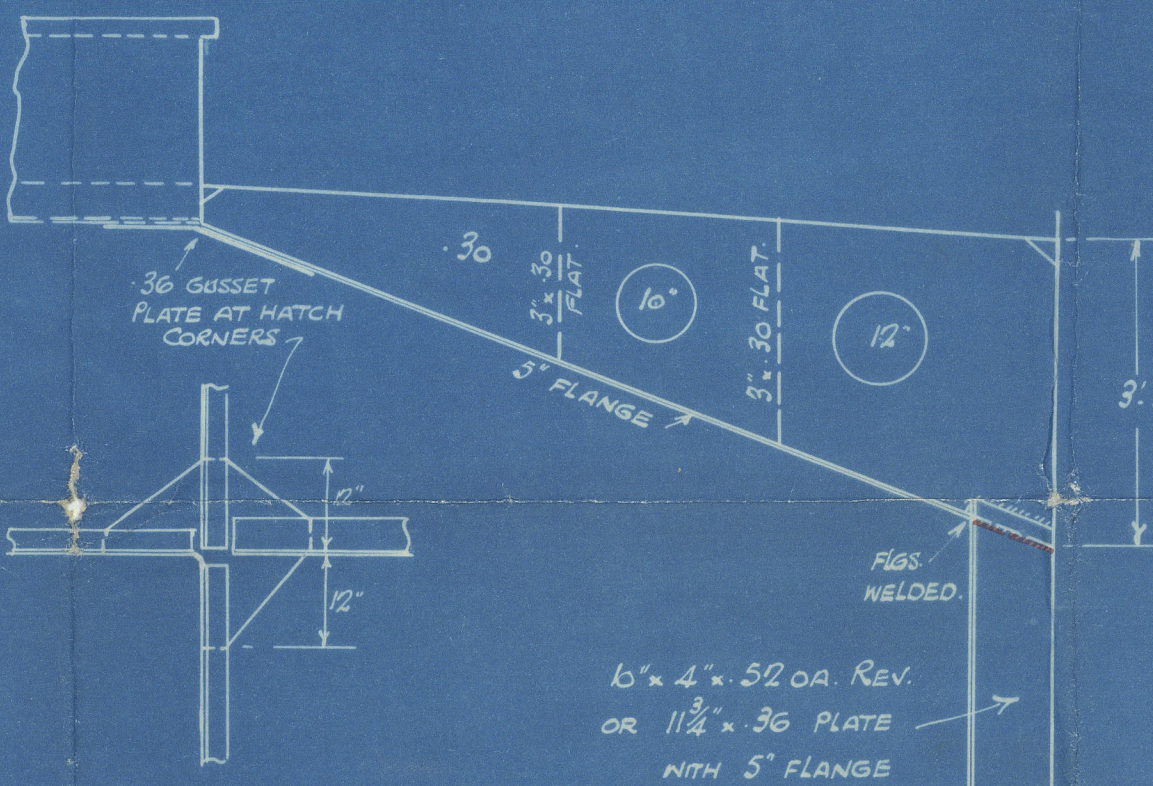
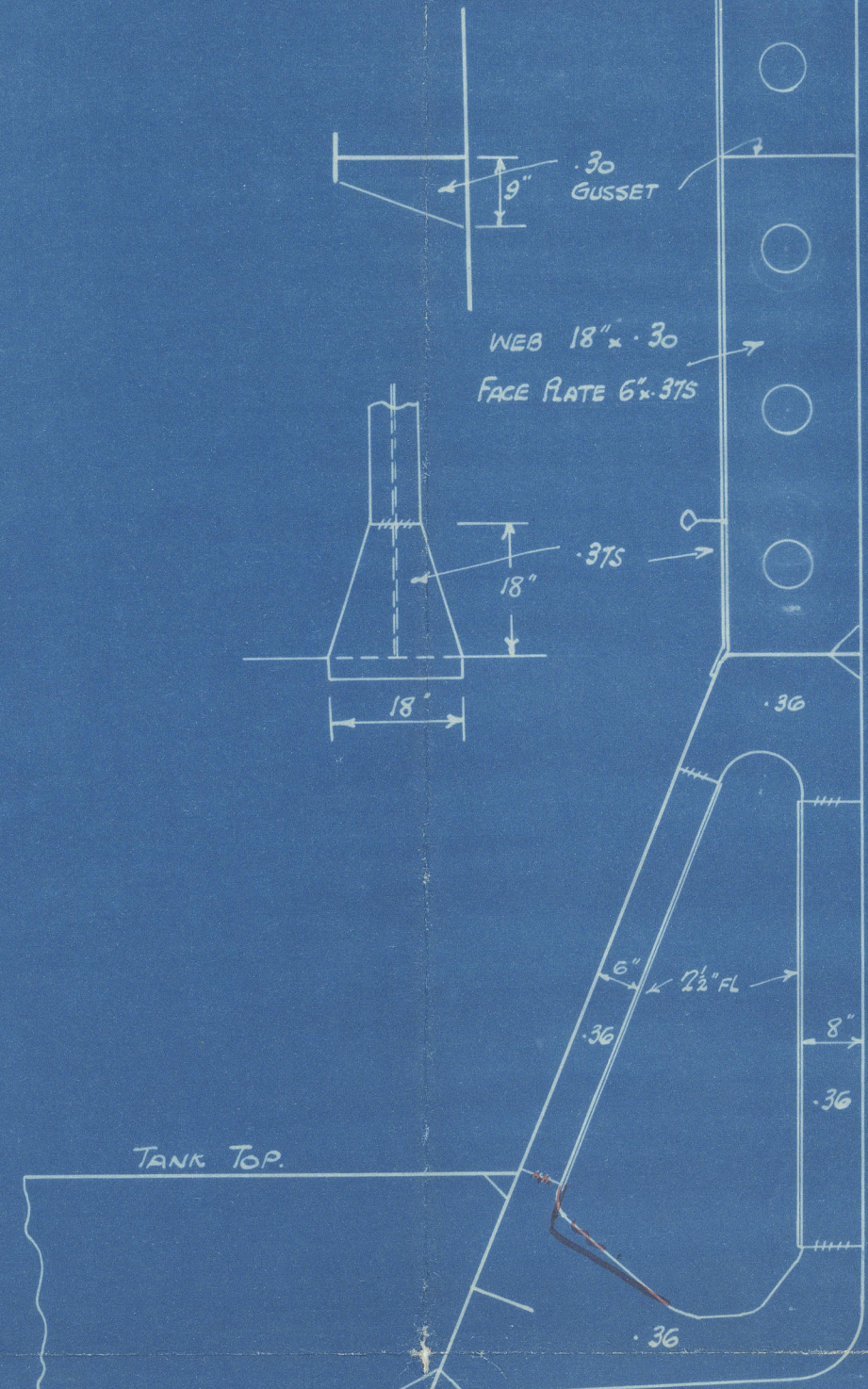
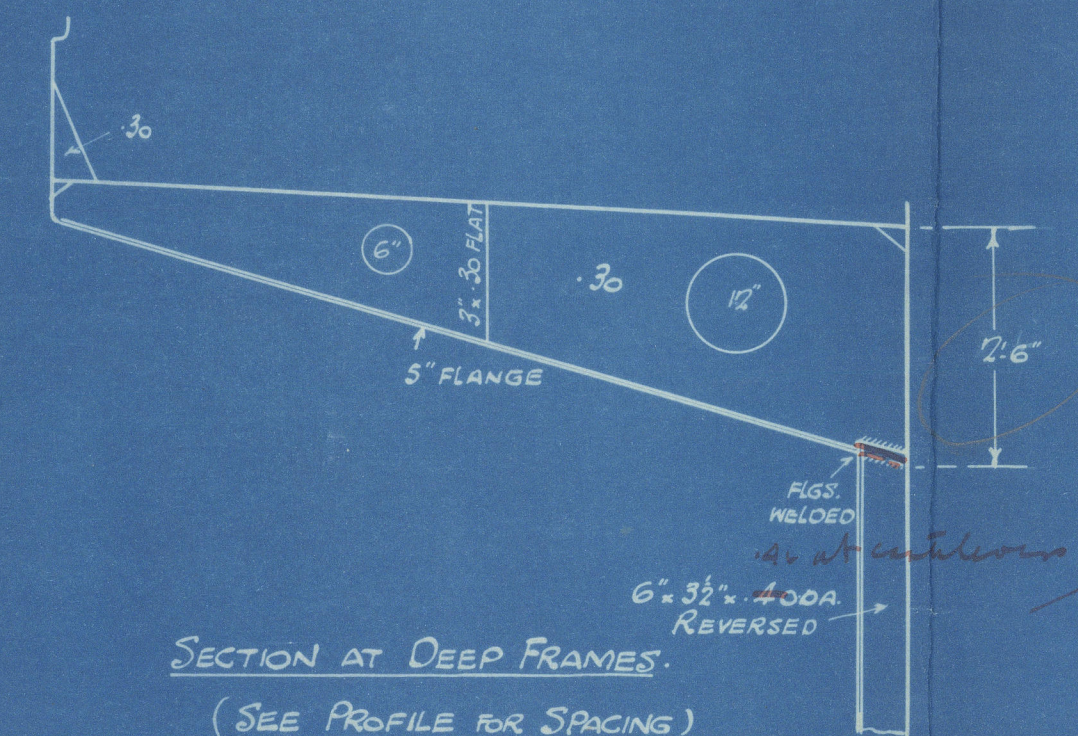
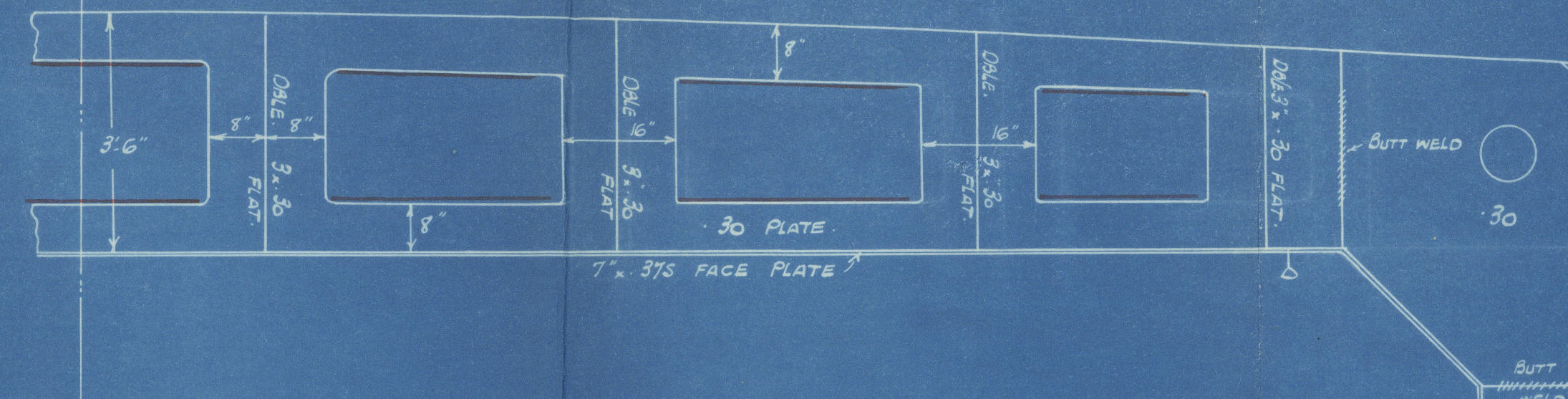
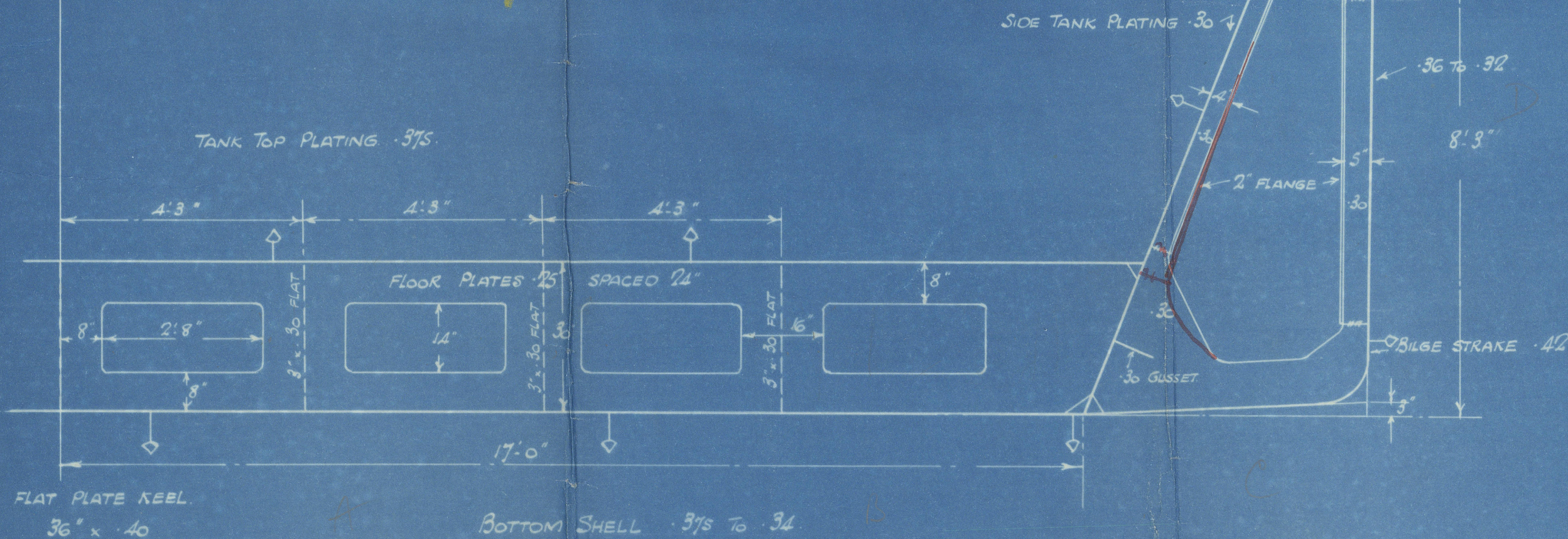
Notation: electrically welded



EQUIPMENT.

1. BOWER ANCHOR 30 1/2 CWT. STOCKLESS
 1. " 26 " " "
 1. STREAM " 7 1/2 " EX. STOCK.
 - 180 FATHOMS 1 1/2" STUO LINK CABLE
 - 75 3 1/2" CIRCUM. STEEL WIRE
 - 90 1 1/2" " " " TONLINE
 - 2 @ 90 2 1/2" " " " HAWSERS.
 - 2 @ 90 1 1/2" " " " WARPS.
- 2 @ 50 6" MANILLA

See Letter 22 June 35



290

1507

L291

(1) ^{410.}
Swan Hunters No 1507

Midship Section

MS. "JOSEPH MEDILL"
NEWCASTLE ON TYNE.

Report No. 92860.

W475-0127 © 2019



Lloyd's Register
Foundation