

TENSILE STRENGTH OF MATERIAL: IN SHELL PLATES	42.5 - 47	KG. PS. SQ. IN.
END	42.5 - 47	
FURNACES	42 - 45	
OTHER PLATES	42 - 45	
STAY	42.5 - 47	
STAY BOLTS	42.5 - 47	

WORKING PRESSURE = 185 LBS. SQ. INCH.
HEATING SURFACE IN ONE BOILER = 1818 SQ. FOOT.
GRATE AREA = 435 "

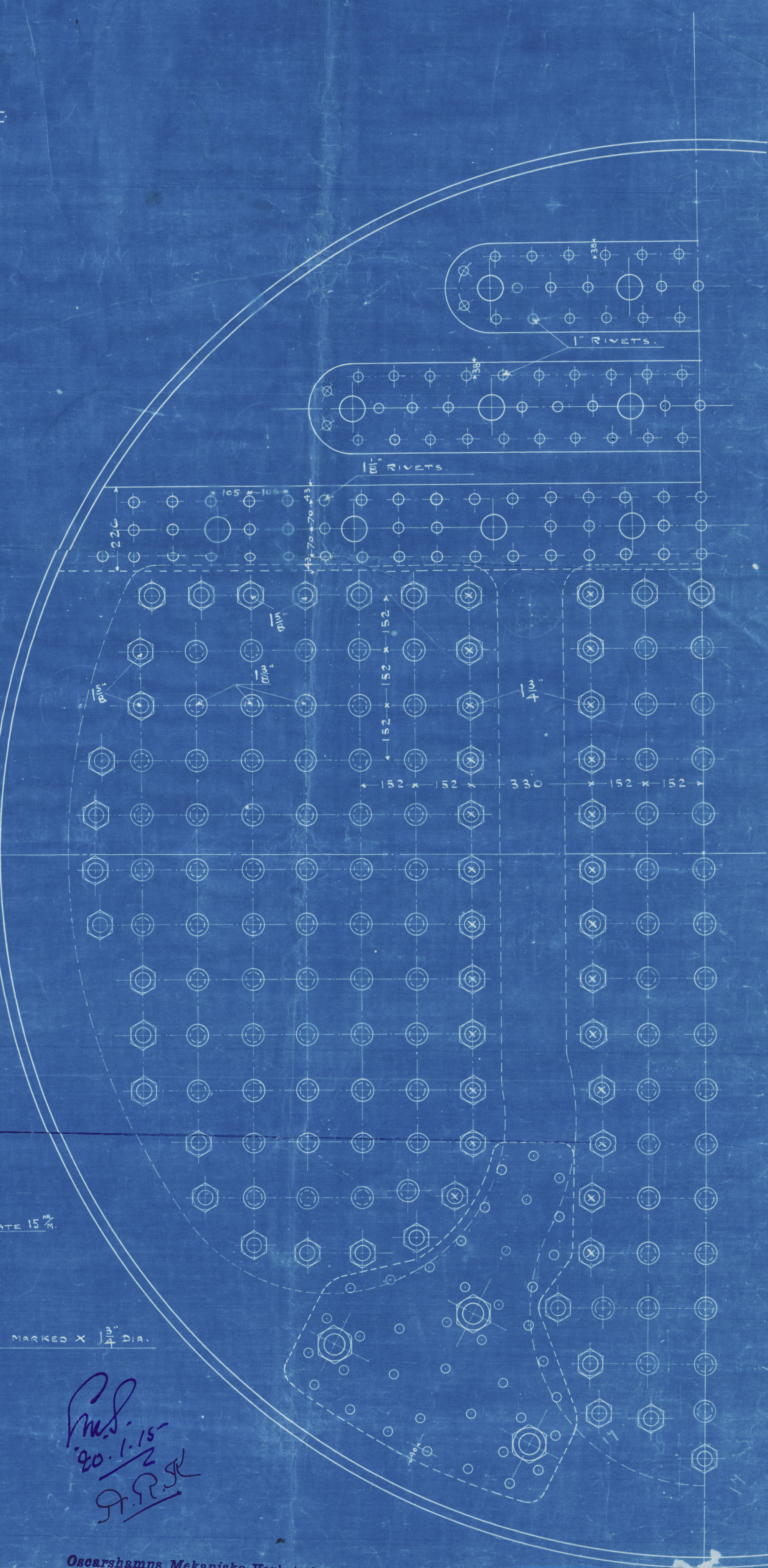
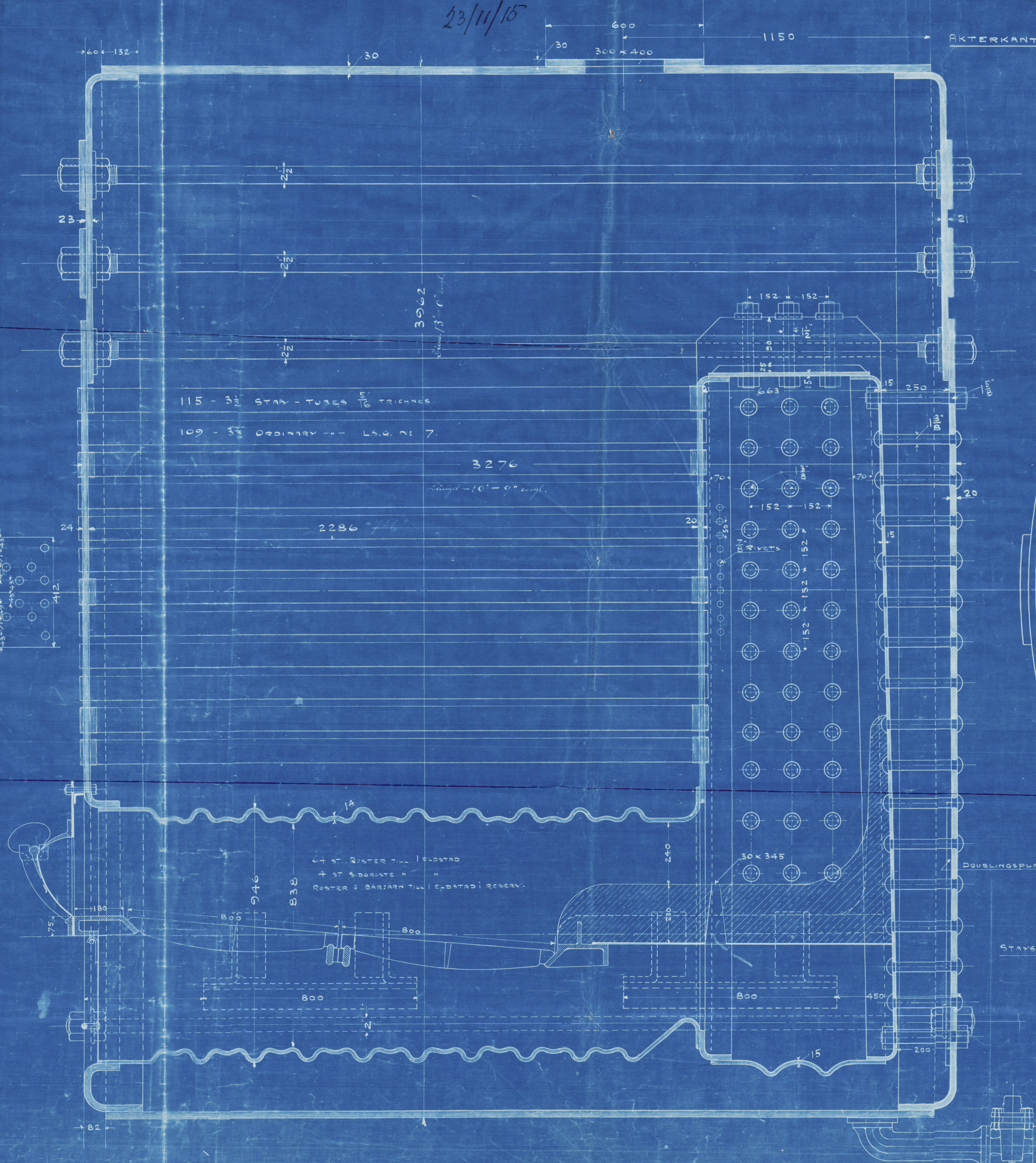
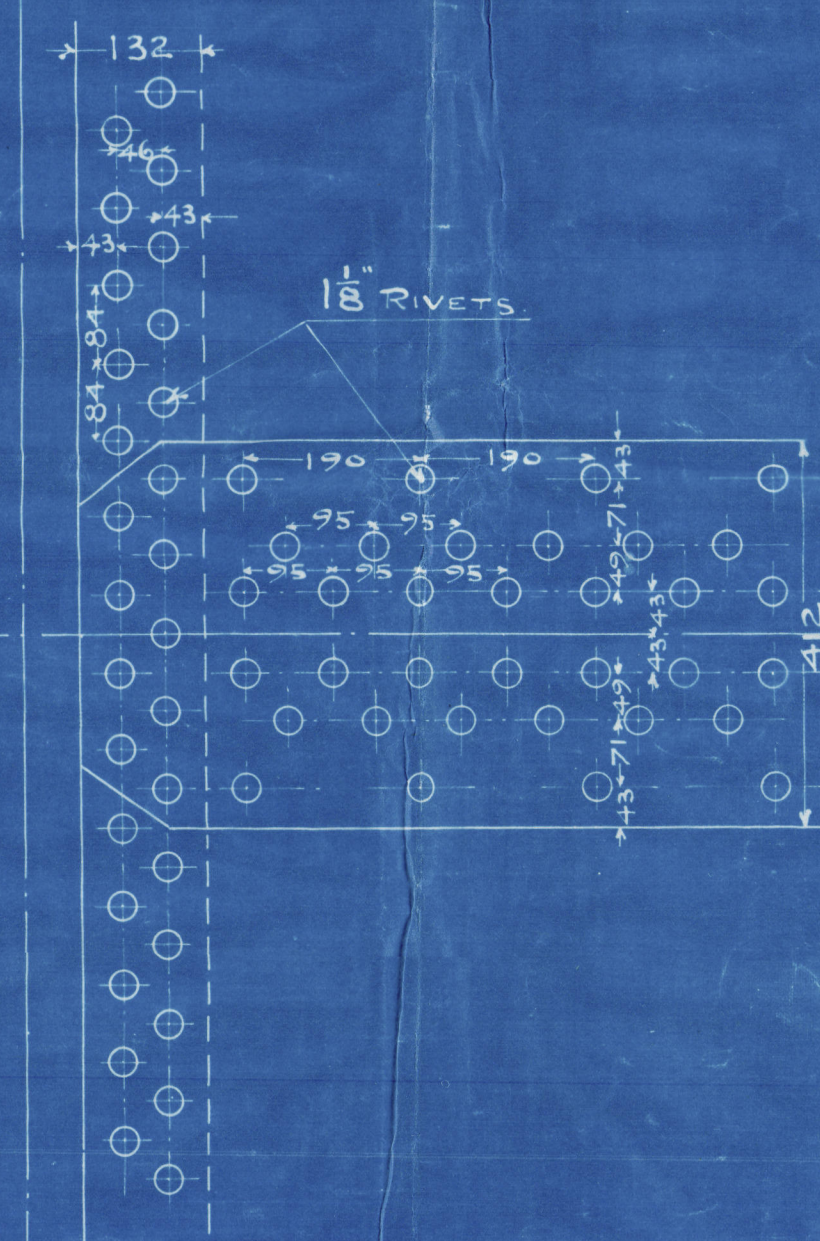
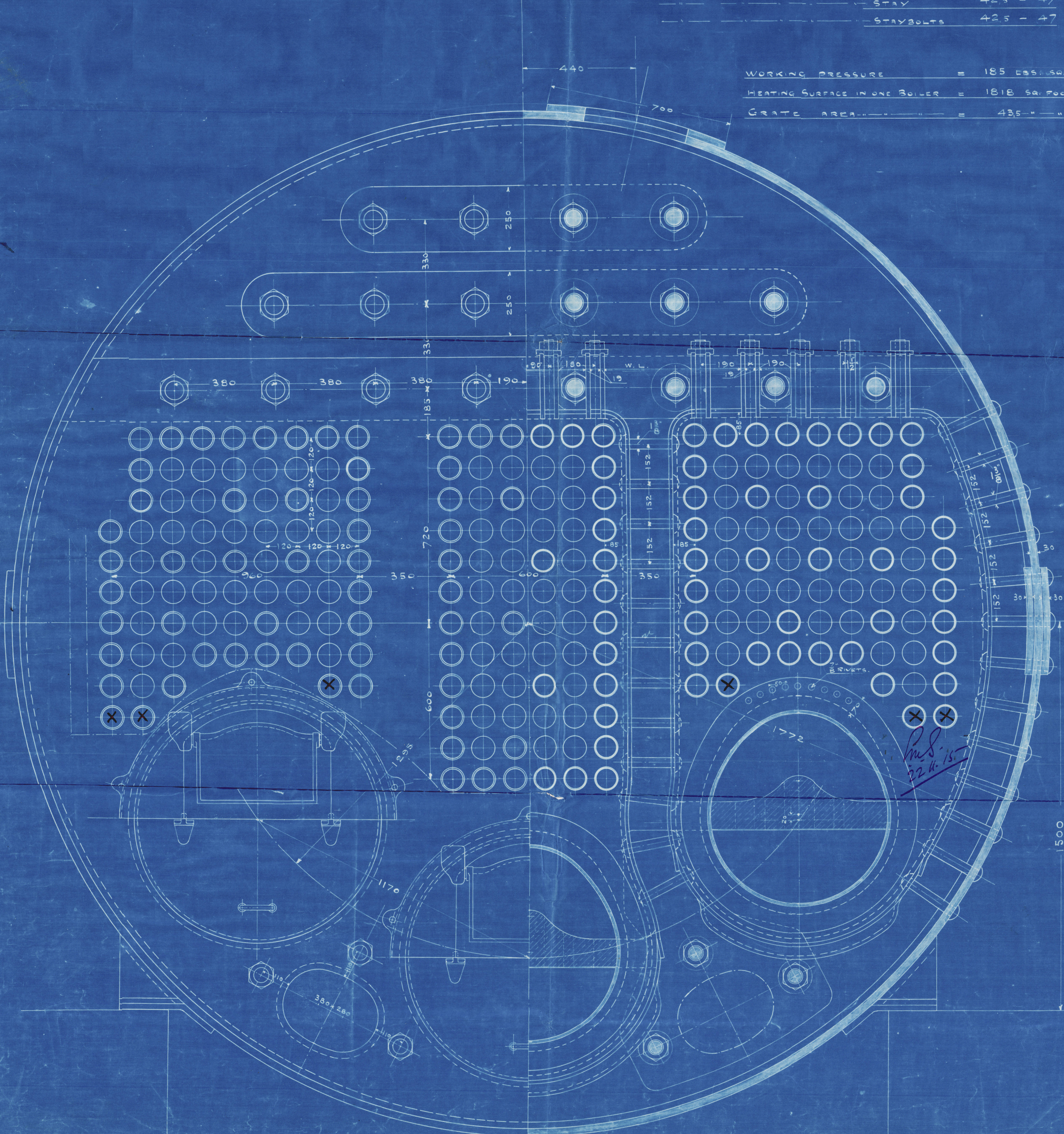
2 BOILERS FOR S.S. 254

SKALA 1:8

20/1/15

23/11/15

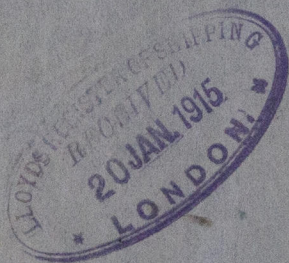
SKURSTENAREA = 33.18 KV. FOT ENL.
TUBSEKTION A 2 RÄNNOR = 22 " " "
AREA ÖFVER ELDBRYGGA 11 1/2 AF RÖSTYTAN
" AF DRAGHÅL 0.76% " " "



20/1/15
23/11/15
J.P.R.

Oscarshamns Mekaniska Verkstad
& Skeppsvärks Aktiebolag
År 30 / 1913

W472-0104



$\frac{8}{5}$ "Andalusia"
Got to 3307.

Main Boilers

RETAIN

S.S. N^o 254

Oscarshamnns Mek. Verkstad

Oscarshamn.

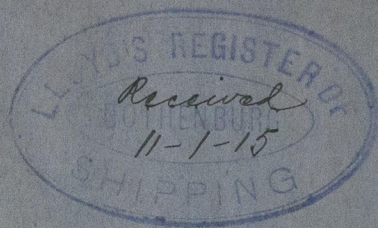


W.472-0104



© 2020

Lloyd's Register
Foundation



© 2020

Lloyd's Register
Foundation