

S.S. N: 254.

DIMENSIONS: 240'-0" x 37'-6" x 17'-9" MOULDED

CLASS: LLOYD'S REGISTER * 100 A1 SHELTERDECK WITH FREEBOARD

SCALE 1:66

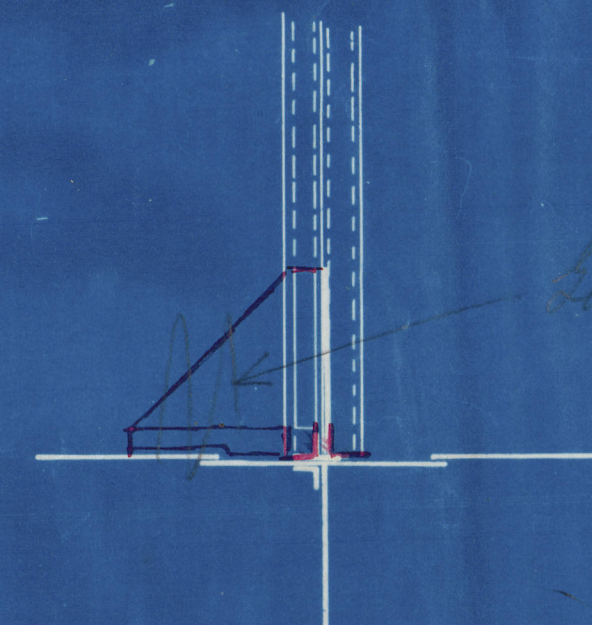
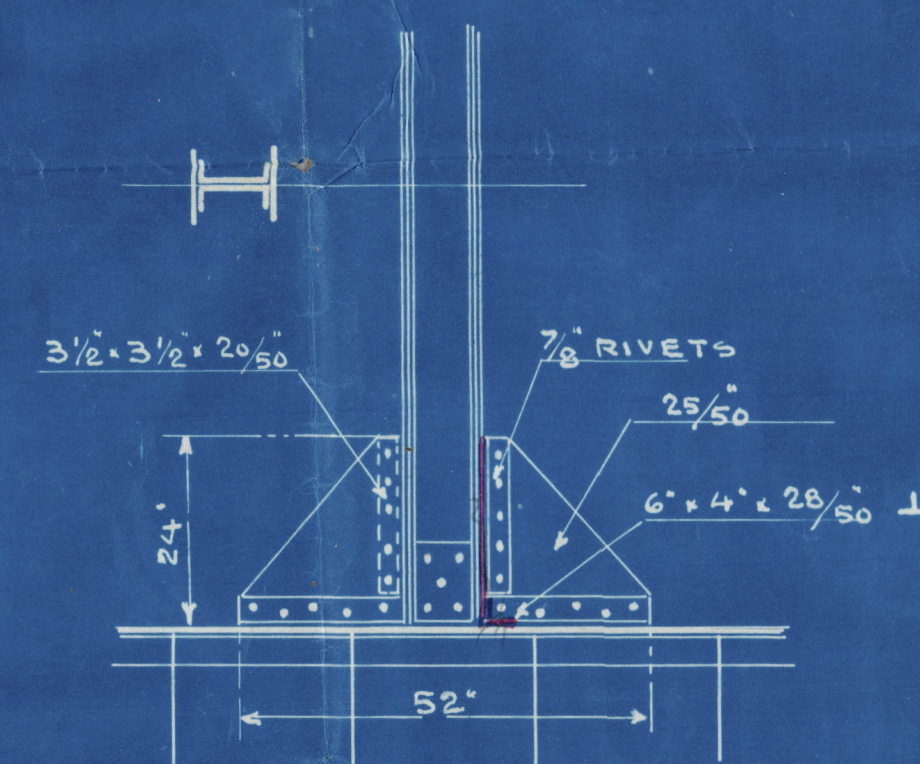
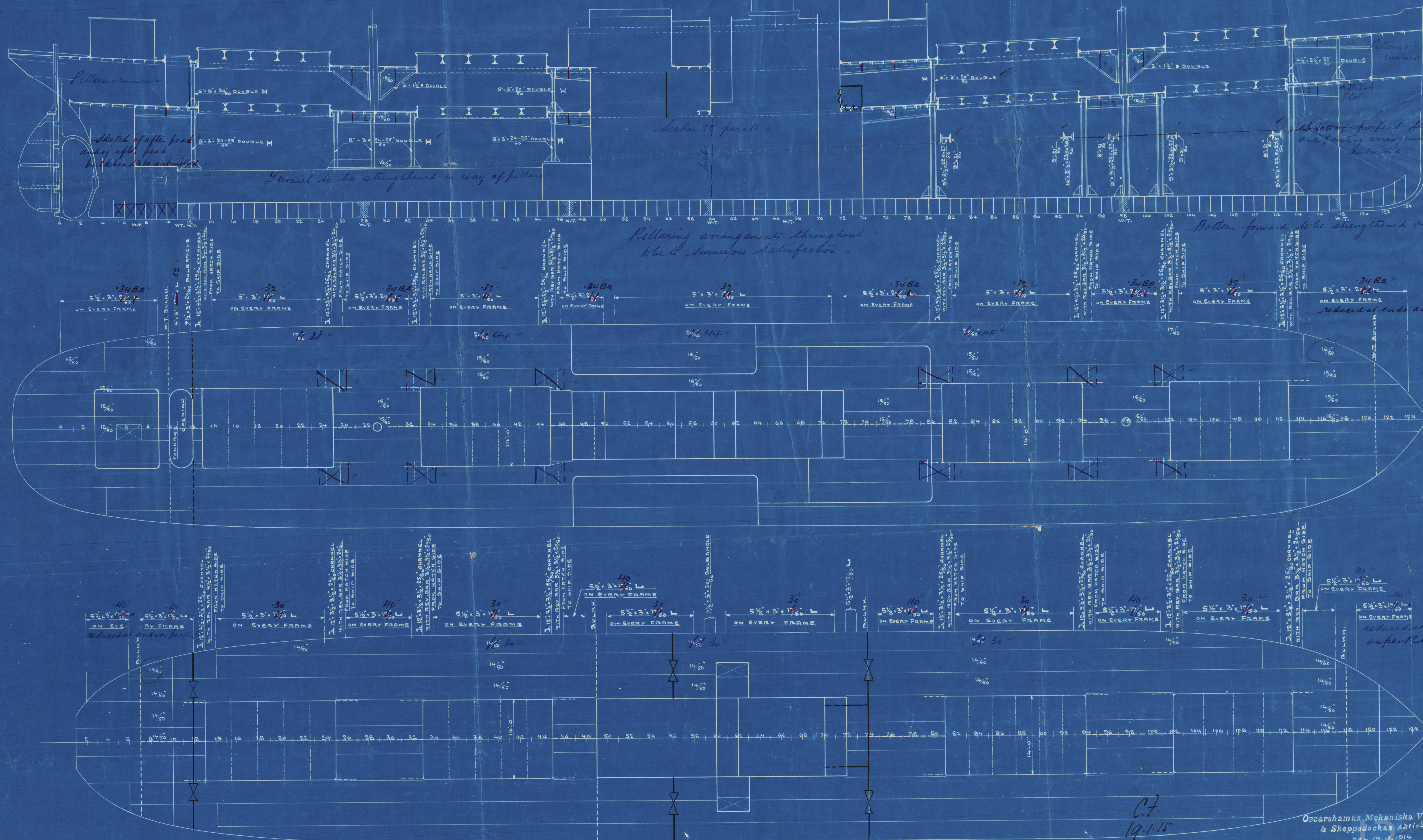
B + D = 55.25

L : B = 6.4

L x (B + D) = 13260

L : D = 13.52

SHEER AT STEM 80 1/2"
 " " 1/2 FROM STEM 40 3/4"
 " " " STERN 13 1/4"
 " " STERN 32"



SKETCH SHOWING THE HEEL OF PILLARS IN FORE HOLD

PILLARS CONNECTED TO DECK WITH THWARTSHIP BRACKETS and tank top

Pillaring arrangements throughout to be satisfactory

Bottom forward to be strengthened as required by the Rules

Oscarshamn's Mekaniska Verkstads
 & Skeppsdoockas Ati-volag
 DAN 19.12.1914

C.F.
 19.1.15

Lloyd's Register
 1914-1915

S.S. "Andalusia"

Oct. 1897.

Profile

RETAIN

S.S. No 254

Oscarshammns Mek. Verkstad

Oscarshamm.



W472-0103



© 2020

Lloyd's Register
Foundation