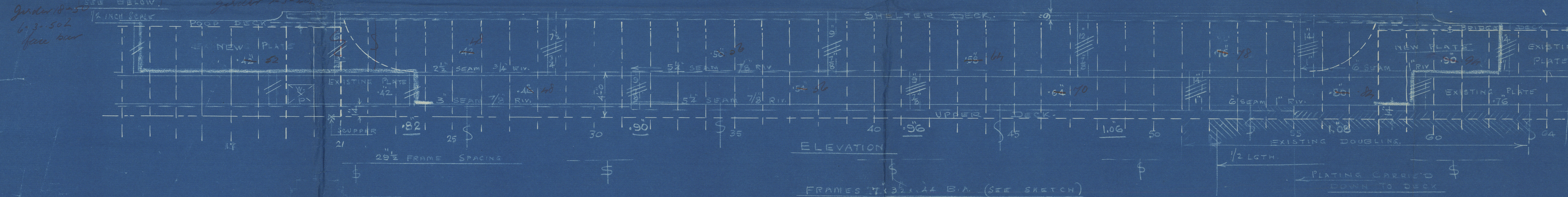
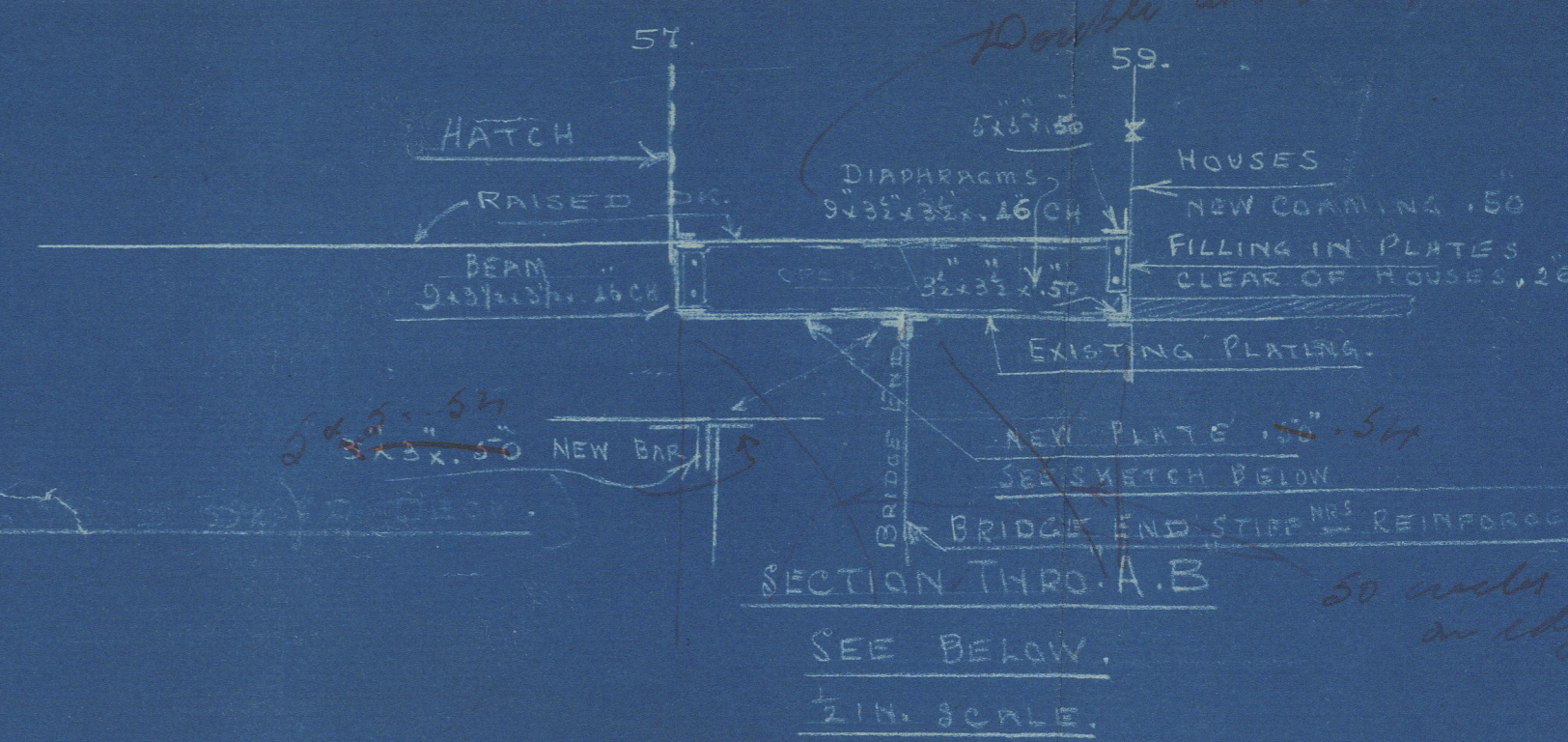
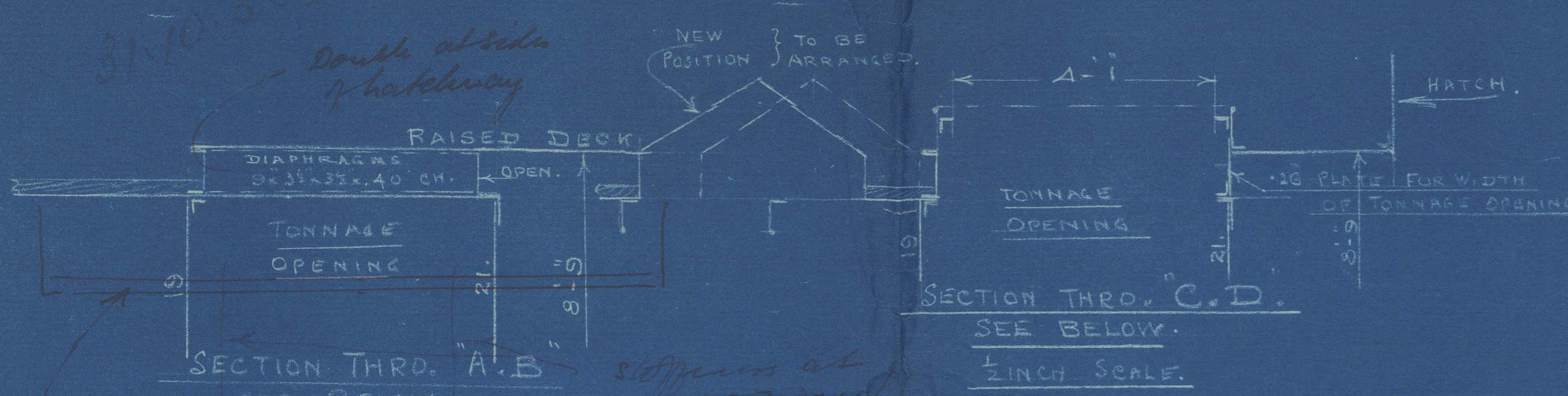


PALMER ENGINEERING CO.

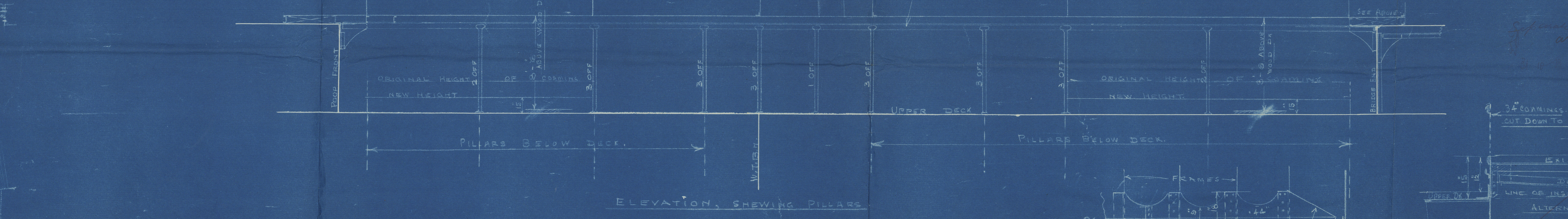
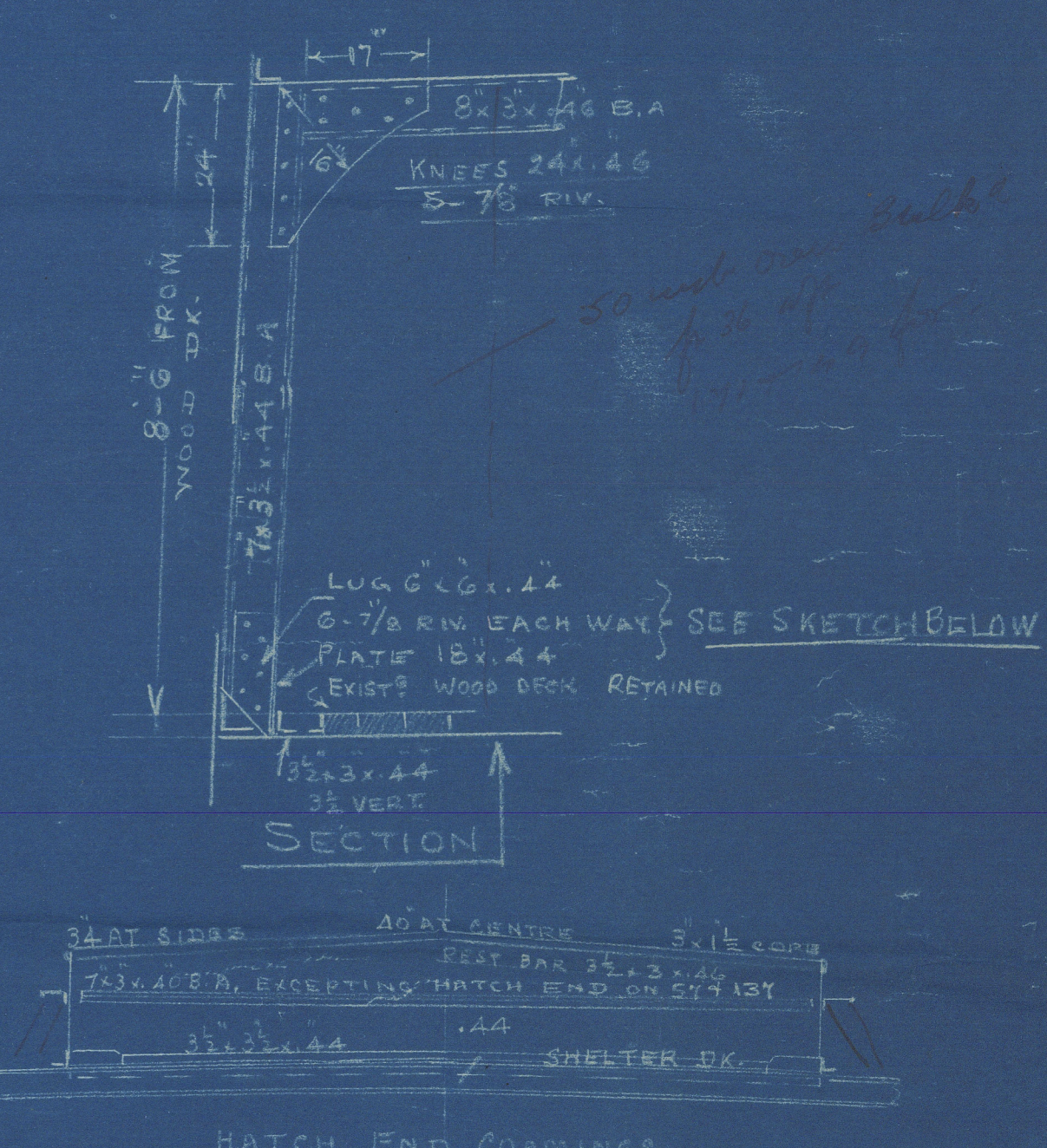
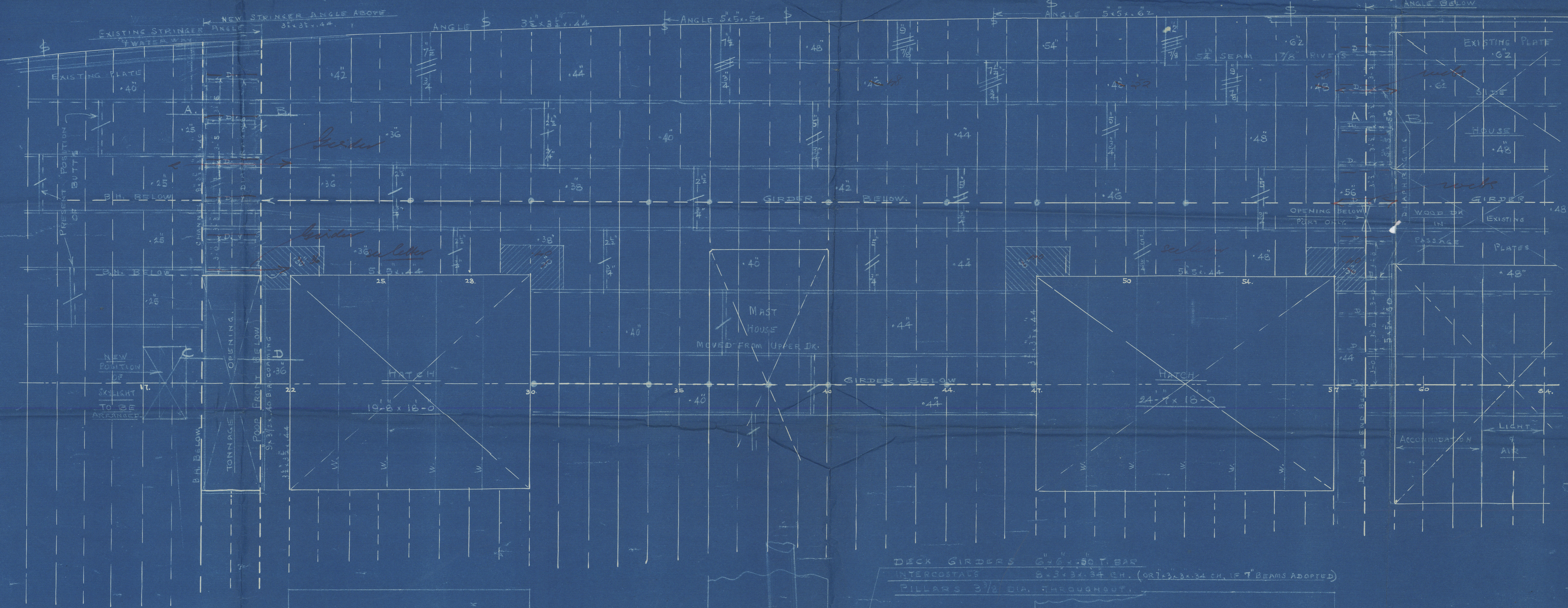
PLAN NO. 27
- 10-10-25

AMENDED.
ARRANGEMENT FOR FILLING IN AFTER WELL.
S.S. DORIC STAR.

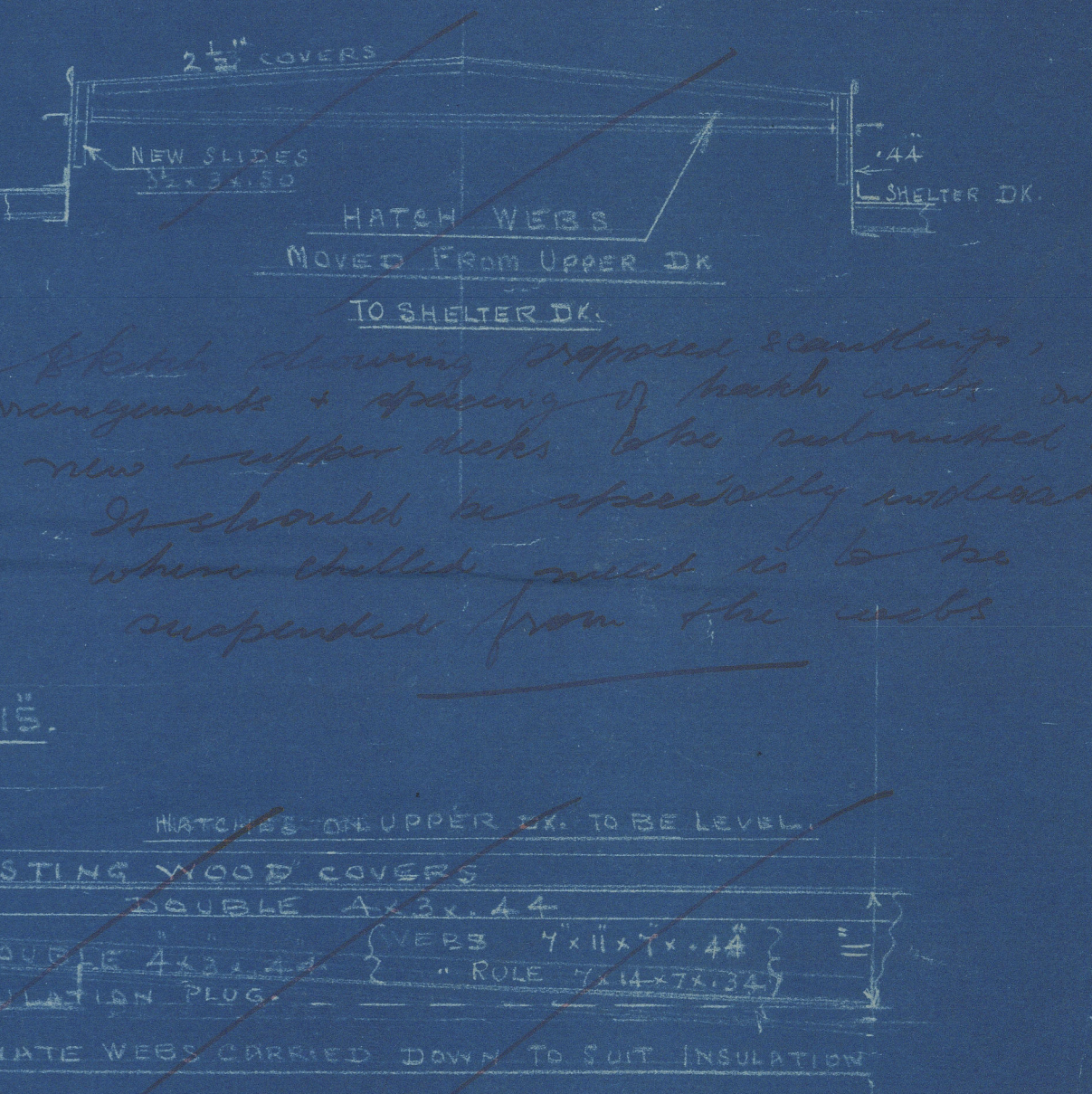
SCALE 1/4" IN. = 1 FOOT



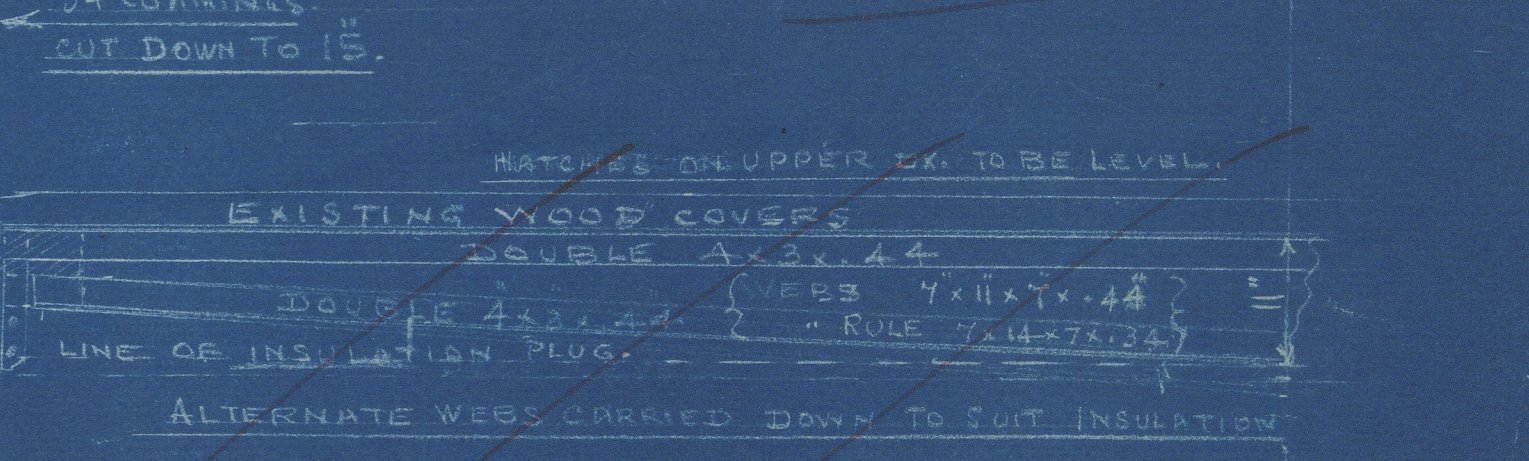
BEAMS 8"x3"x.46 B.A. OR 7"x3"x.36 CHANNEL EQUIVALENT.
KNEES 24"x.46 5-7/8 RIV.



DECK GIRDERS 8"x6"x.80 T.BAR
INTERCOSTALS 5"x3"x.34 CH. (OR 3"x3"x.34 CH. 16 T.BEAMS ADOPTED)
PILLARS 3 1/2 DIA. THROUGHOUT.



Separate plan showing proposed arrangement of hatch with new upper deck also submitted. It should be specially indicated where shells failed to be suspended from the ribs.



W468-0200

Aft Well

E

8-9

analysed

Lower Sta-

MIN
A
T
E

"DORIC STAR"

NEWCASTLE ON TYNE.

Report No. 90974

19

W468-



0200

© 2019

Lloyd's Register
Foundation