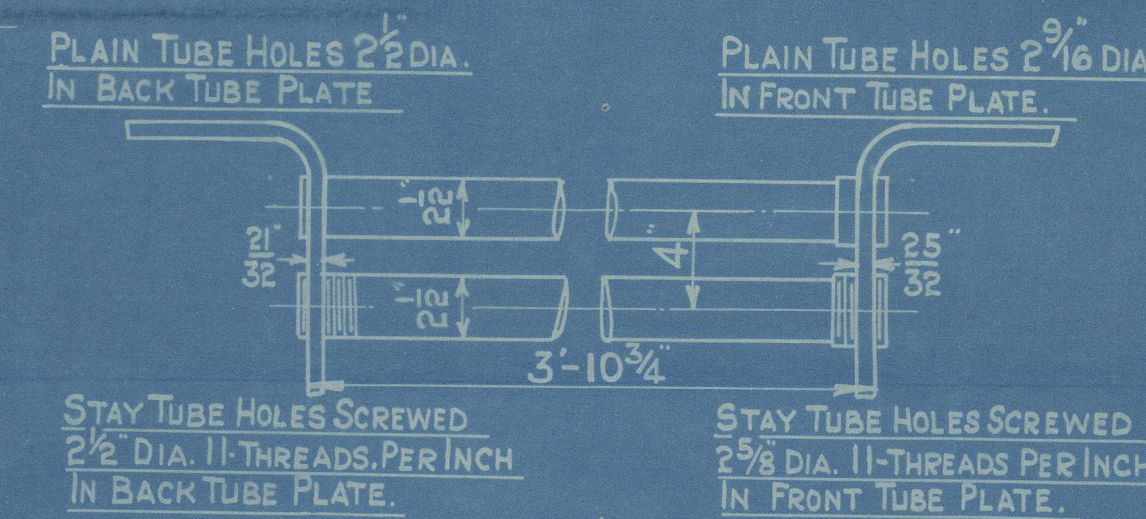
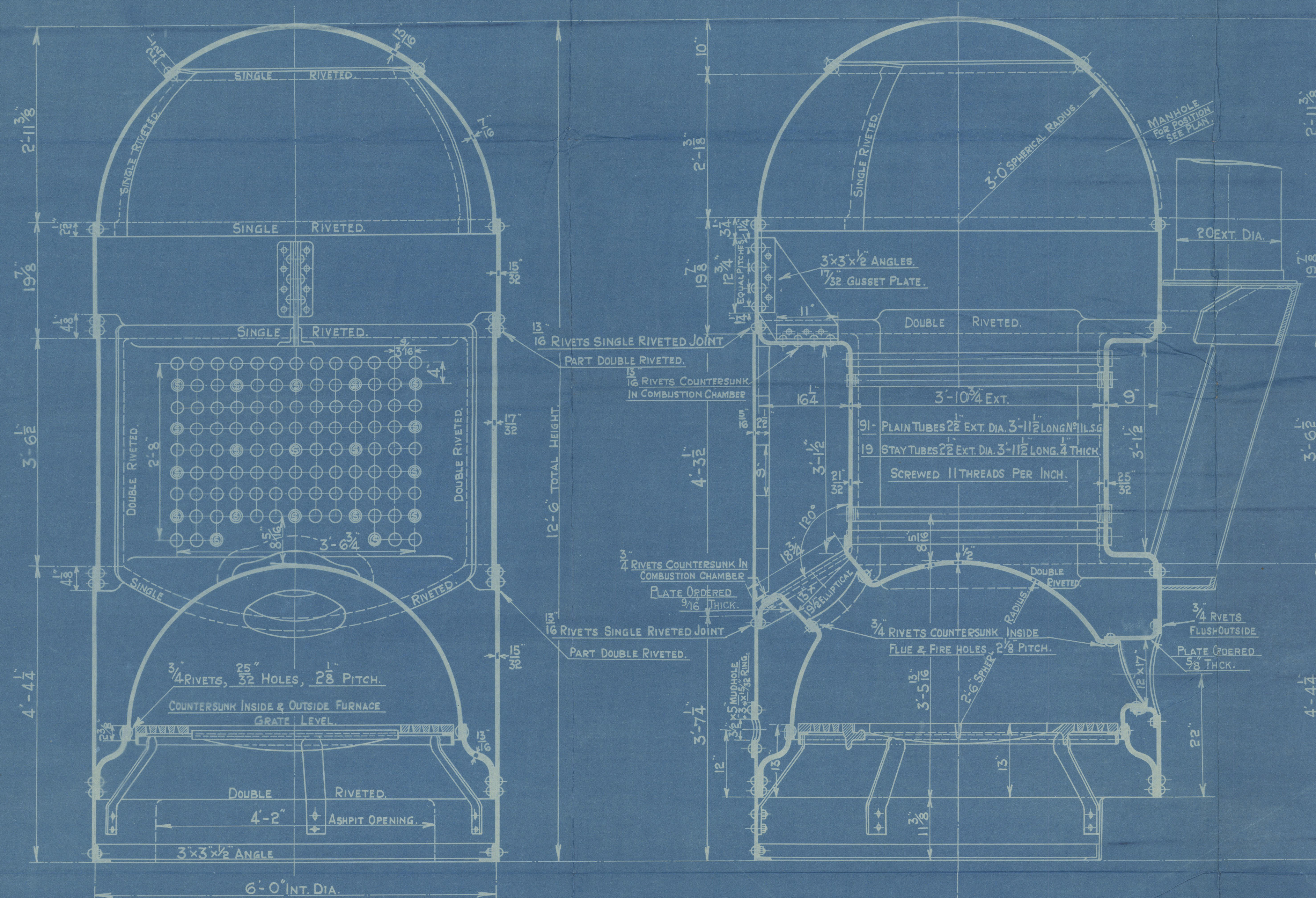


COCHRAN PATENT VERTICAL MULTITUBULAR BOILER.

HORIZONTAL FLUE TUBES.

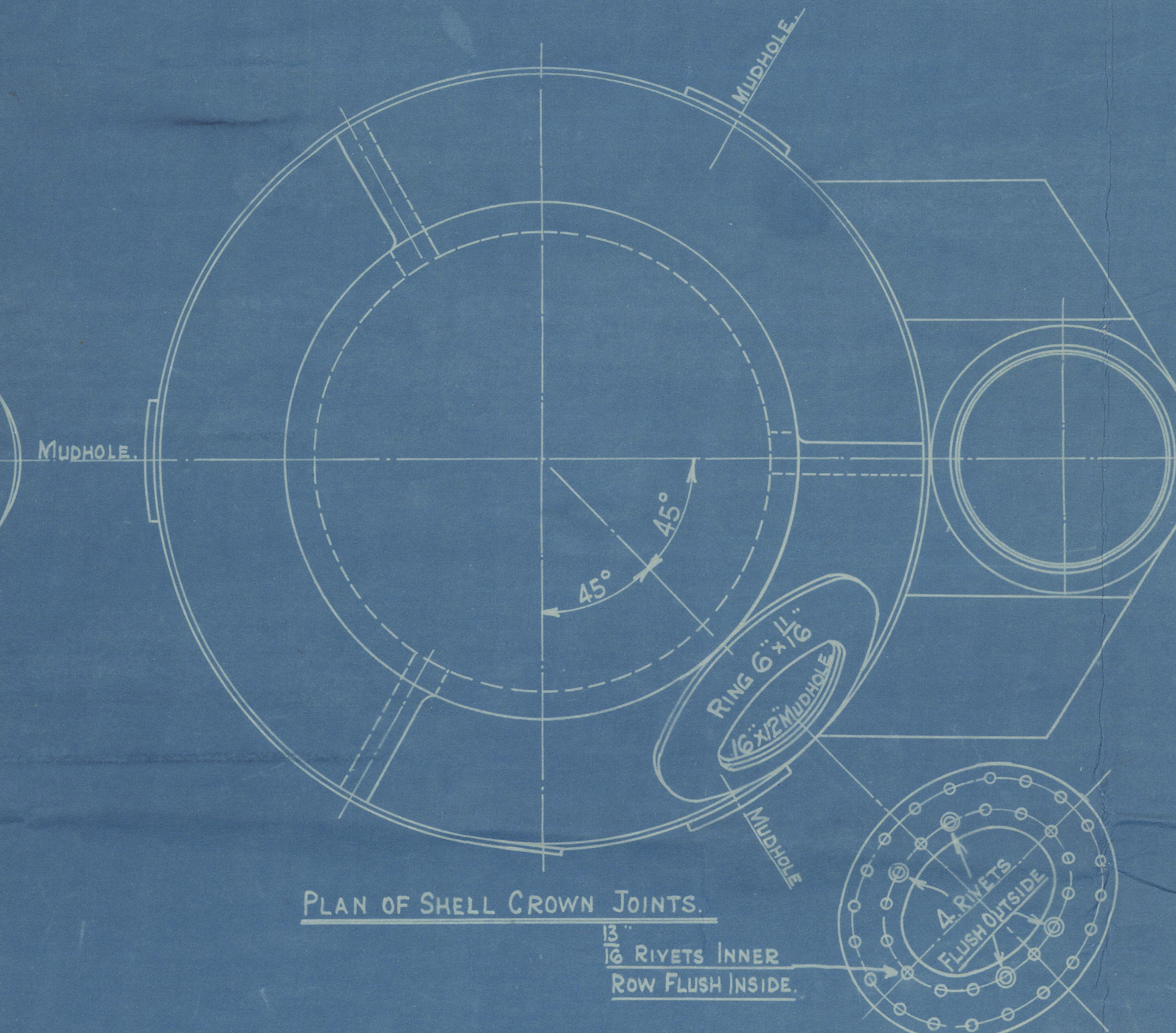
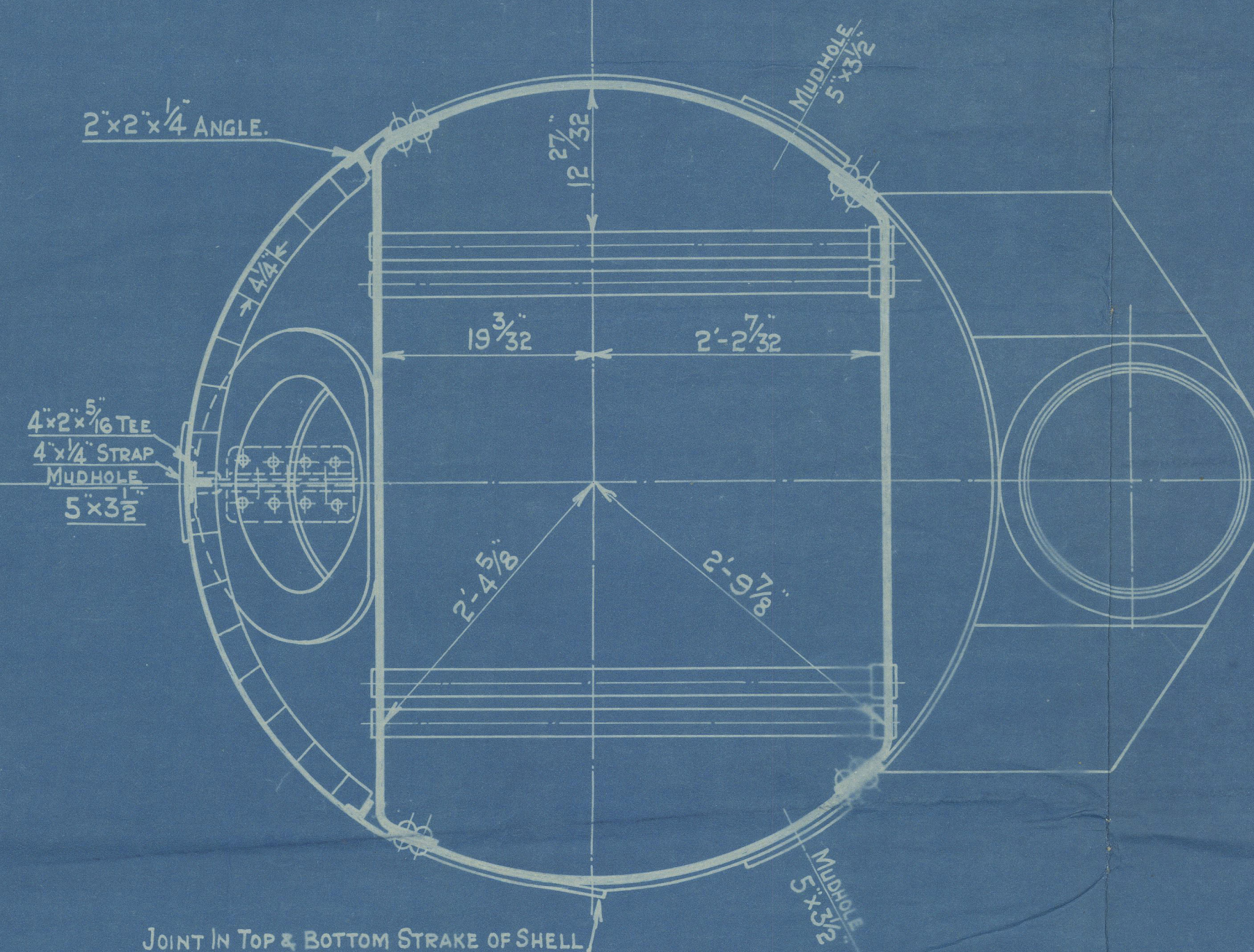
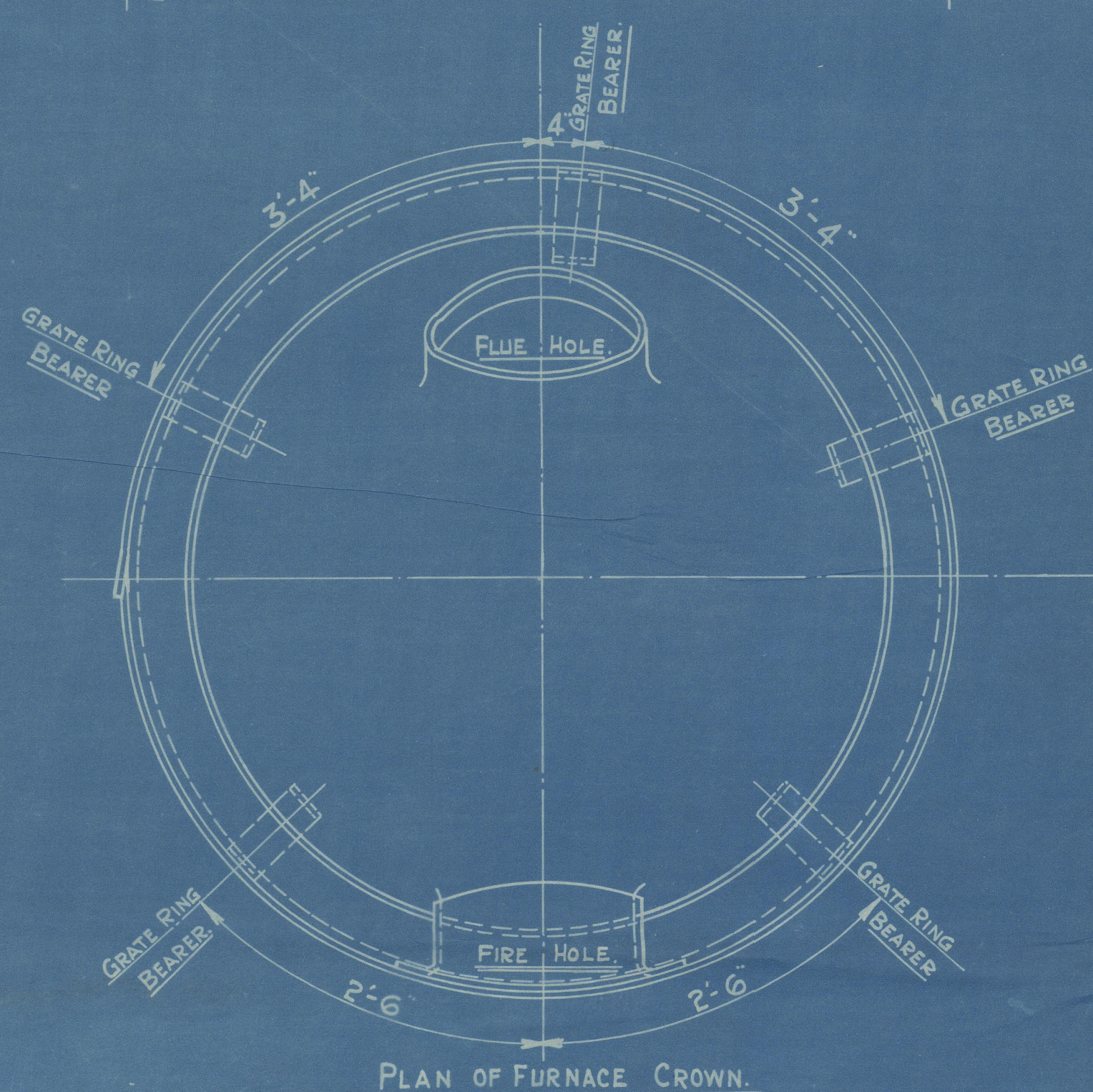
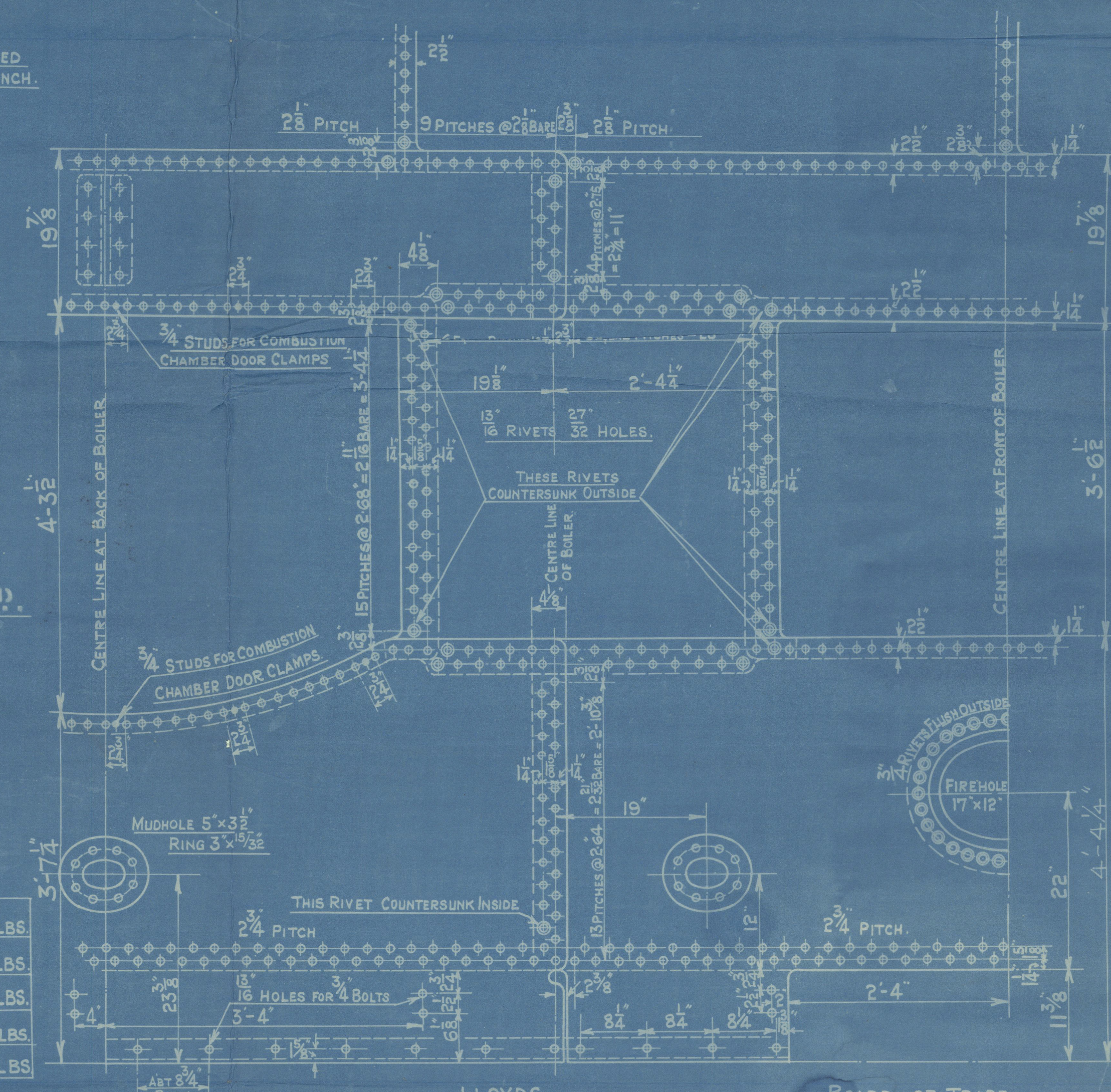


SCALE 1/2" = 1 FOOT.

HEATING SURFACE.	
TUBES	273 SQ. FT.
PLATE	77 "
TOTAL	350 "
GRATE AREA	18.7 "

COCHRAN & CO ANNAN LD.
ENGINEERS & BOILERMAKERS
ANNAN, SCOTLAND.

BUREAU VERITAS.	
SHELL.	168x2x28x2240x(46875-04) = 127 LBS.
RIVETS	2x2x.5591x24x2240 = 121 LBS.
FRONT TUBE PLATE.	10400x78125(4-2-59375) = 126 LBS.
BACK TUBE PLATE.	10400x65625(4-2-5) = 112.9 LBS.
FURNACE.	600(8-2) = 120 LBS.



LLOYDS.		BOARD OF TRADE.	
PLATE	2'-64 - .84375 x 100 = 68%	2'-64 - .84375 x 100 = 68%	
RIVETS	2 x .5591 x 85 = 73.3%	25 x .5591 x 24 x 5 = 77%	
FRONT TUBE PLATE.	4 - 2'-59 x 100 = 35.2%	28 x 2'-75 x 46875 x 4.5 = 35.2%	
BACK TUBE PLATE	4 - 2'-5 x 100 = 37.5%	4 - 2'-53 x 100 = 37.5%	
SHELL.	20.5 x (7.5-2) x 68 = 106 LBS.	28 x 2240 x 68 x 2.2 x 16875 = 113 LBS.	
FRONT TUBE PLATE.	20.5(12.5-2)x352 x 26 = 103.8 LBS.	26 x 2240 x 35.2 x 78125 = 136 LBS.	
BACK TUBE PLATE.	20.5(10.5-2)x37.5 x 26 = 105.9 LBS.	26 x 2240 x 37.5 x 65625 = 168 LBS.	
FURNACE.	1250 x (8-2) = 125 LBS.	14000 x 1 = 116 LBS.	
OGEE RING.	516 x 12 = 100.9 LBS.	60 x 2 = 116 LBS.	

Approved 8-4-13.
PATENT BOILER N° 7360
W. H. Cochran
19-2-11.
6'-0" x 12'-6" x 350# x 100 LBS.

SCALE 1 INCH TO 1 FOOT

SIEMENS MARTIN MILD STEEL PLATES.
TENSILE TESTS:-

PLATES NOT EXPOSED TO FLAME OR FLANGED ----- 28 TO 32 TONS.
PLATES EXPOSED TO FLAME OR FLANGED, EXCEPT FURNACE CROWN ----- 26 TO 30 TONS.
FURNACE CROWN ----- 26 TO 29 TONS.

DRAWING N° 1235.

STANDARD
SURVEY - LLOYDS.

COCHRAN & CO., ANNAN, LD.

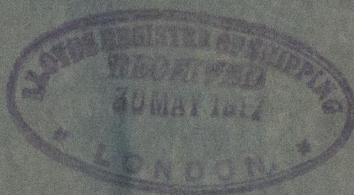
Boiler No. 7360

Drawing No. 9285

100 LBS.

GLASGOW REPORT No. 36903

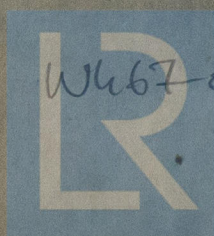
S. S. "Burnhope"



S.S. "BURNHOPE"

NEWCASTLE ON TYNE.

Report No. 70118.



© 2020

W467-0248

Lloyd's Register
Foundation