

— SHIP N° 80 — MIDSHIP SECTION.

Scale 1:25

Cargo Motorship to Class, Loads Reg. 100 AT*
Compl. Superstructure Vessel Draught 7.95 m.

Dimensions: 128.0 x 1737.8 x 11.66
Scaffolding Numerals:
L = 128.0 + 5.4 m = 133.4 133.4 x 0.96 = 128.06 m (Cruiser stern)
L x D = 128.06 x 11.36 = 1455
L x (B+D) = 128.06 x (1737.8 + 11.36) = 3680
L x D = 128.06 x 11.66 = 1497
d = 8.92 + 1.12 = 10.04 m
d in Motorspace = 8.92 + 0.5 m = 9.42 m

Equipment Numbers:
L (B+D) = 3716
Pooch & Forecastle = 78
Deckhouse = 106
3894

Equipments: 2 off Success Anchors à 3685 kg Col. weight 10515
1 - Streamanchor à 1040 kg + 25% for Stock
550 m 60 mm Stud Chain Cable min weight 4250 kg
220 m Steelwire 127 mm for Streamanchor 6-12 flexible steel wire rope
240 m 127 mm 6-24 special flexible steel wire rope
2 off 185 m 205 mm Manila or 70 mm Steelwire 6-12 flexible steel

— UPPER DECK —

Steel plate 1285 x 78
at every 3rd frame
Hatch and beams (D) Number of rivets
Hatch No 1 650 x 11 12 off 22 mm riv 75%
2 700 x 11 13 22 75
3 700 x 11 14 22 75
4 830 x 11 16 22 75
5 900 x 11 18 22 75

— 2ND DECK —

Hatch and beams (D) Number of rivets
Hatch No 1 1500 x 12 21 off 22 mm riv 75%
2 1300 x 12 23 22 75
3 1375 x 12 26 22 75
4 1400 x 12 27 22 75
5 1600 x 12 28 22 75

— LOWER DECK —

Hatch and beams (D) Number of rivets
Hatch No 1 900 x 11 18 off 22 mm riv 75%
2 1100 x 12 21 22 75
3 1300 x 12 25 22 75

Beamknee at 320 frame in afterhold

Side Shell plating 150 x 12 at end
Ends: triple riveted

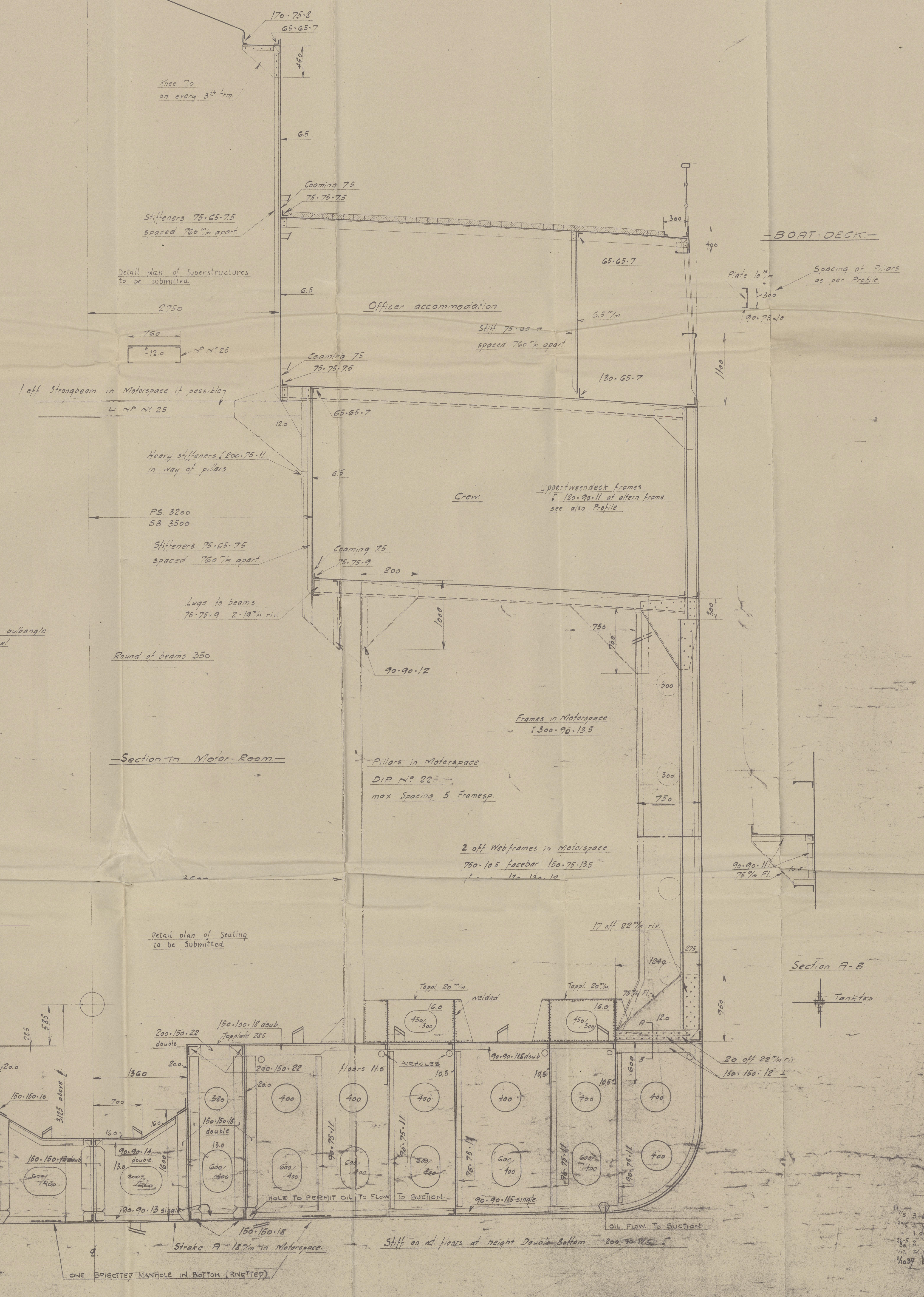
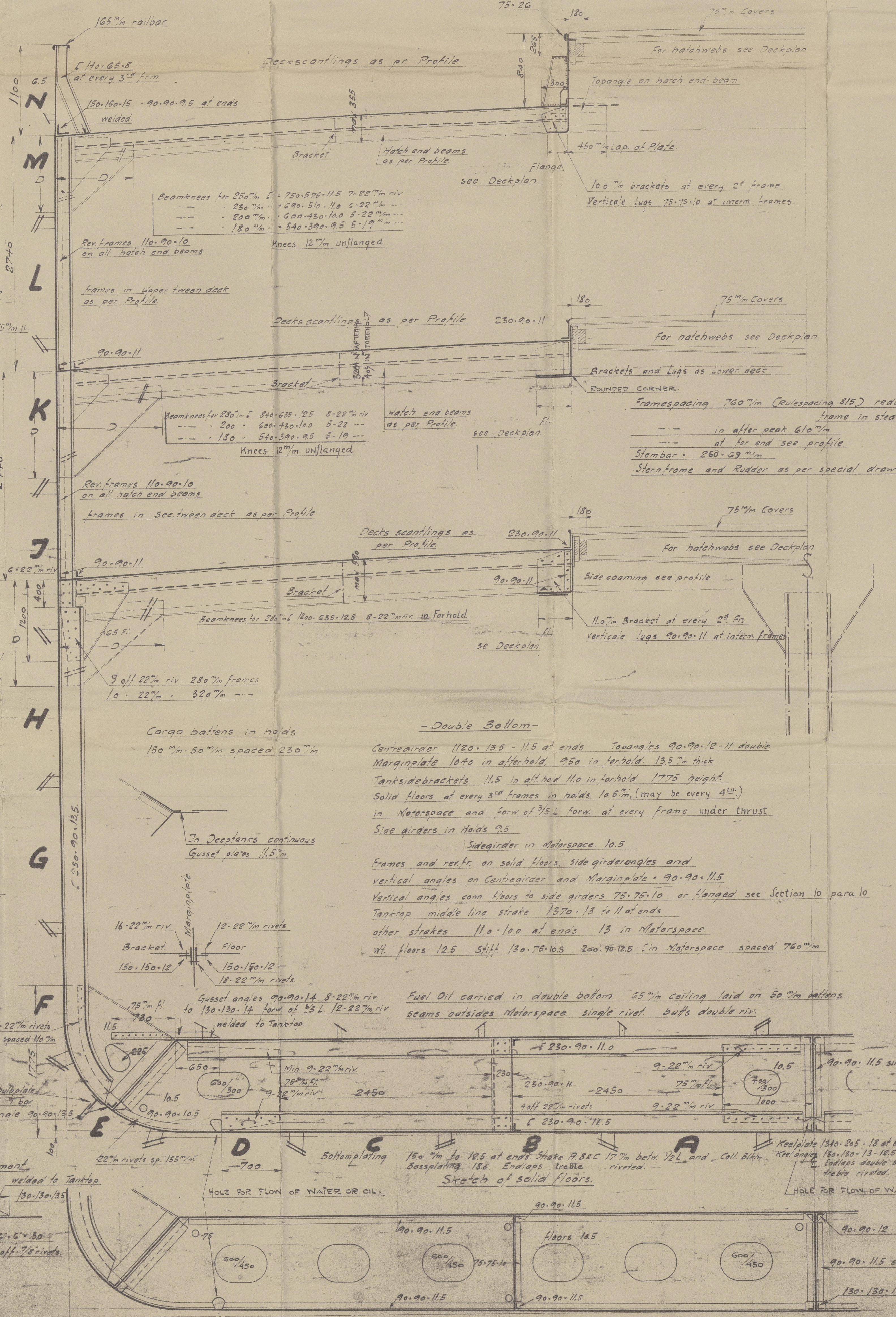
Blug keel 240 x 11 bulbracket
150 x 10 x 10
Margin plate 70 x 10

Margin plate connection to
Frame Bracket and Floors
in way of painting arrangement
where Tankside

Hole for flow of water or oil

6-6 x 50
20 off 75 rivets

150 x 10 x 10



ALEX. VAN OPSTAL.

Bygning N° 80
Midshipspan

RETTET I OVERENSSTEMMELSE MED LLOYD'S TEGNING DEN 20 MAJ 1936

1425 1:25

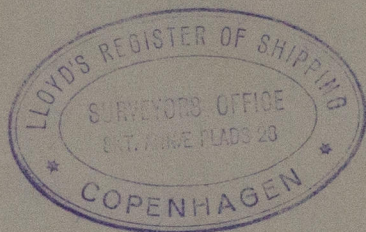
M.V.

1425 1:25

1425 1:25

1425 1:25

1425 1:25



M/ "Alex. van. Epsdal"

Messrs. Nakslov. Skibsværft. Yard. N^o 80

Midship Section

"as. built"

Gen. Report No. 10355.

RETAIN

W467-0195



© 2020

Lloyd's Register
Foundation