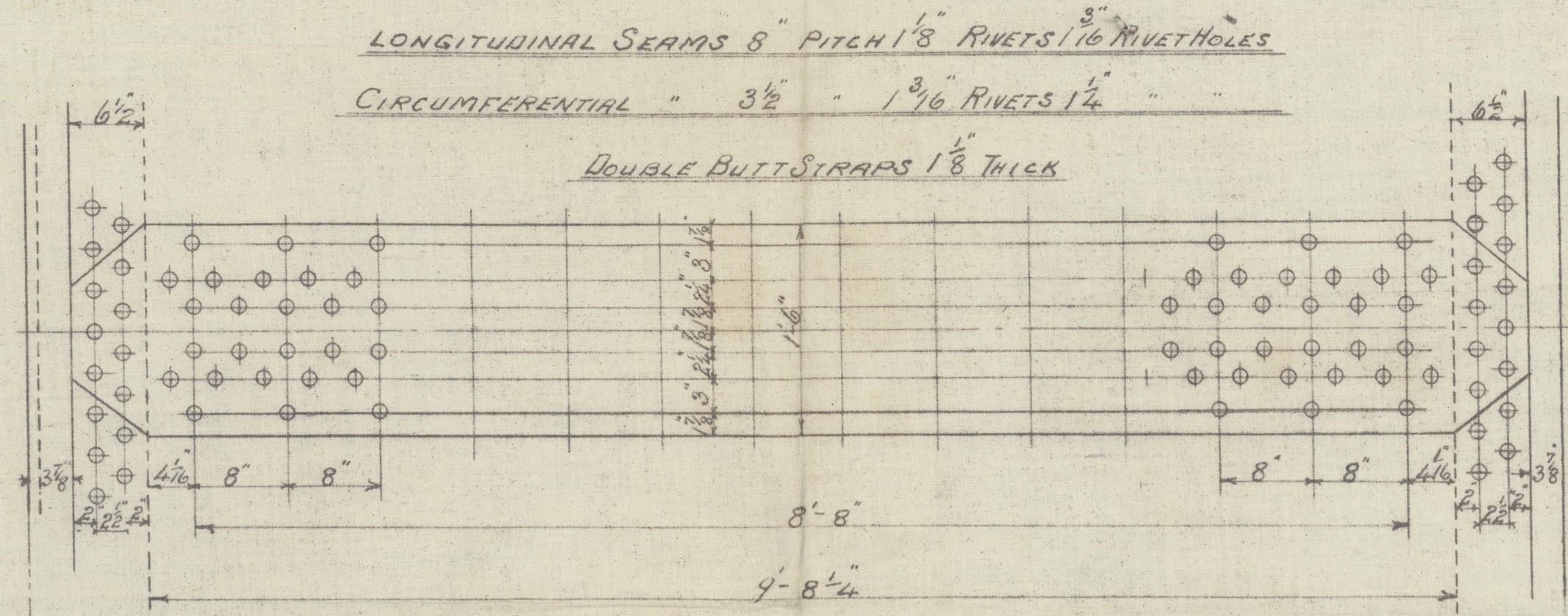


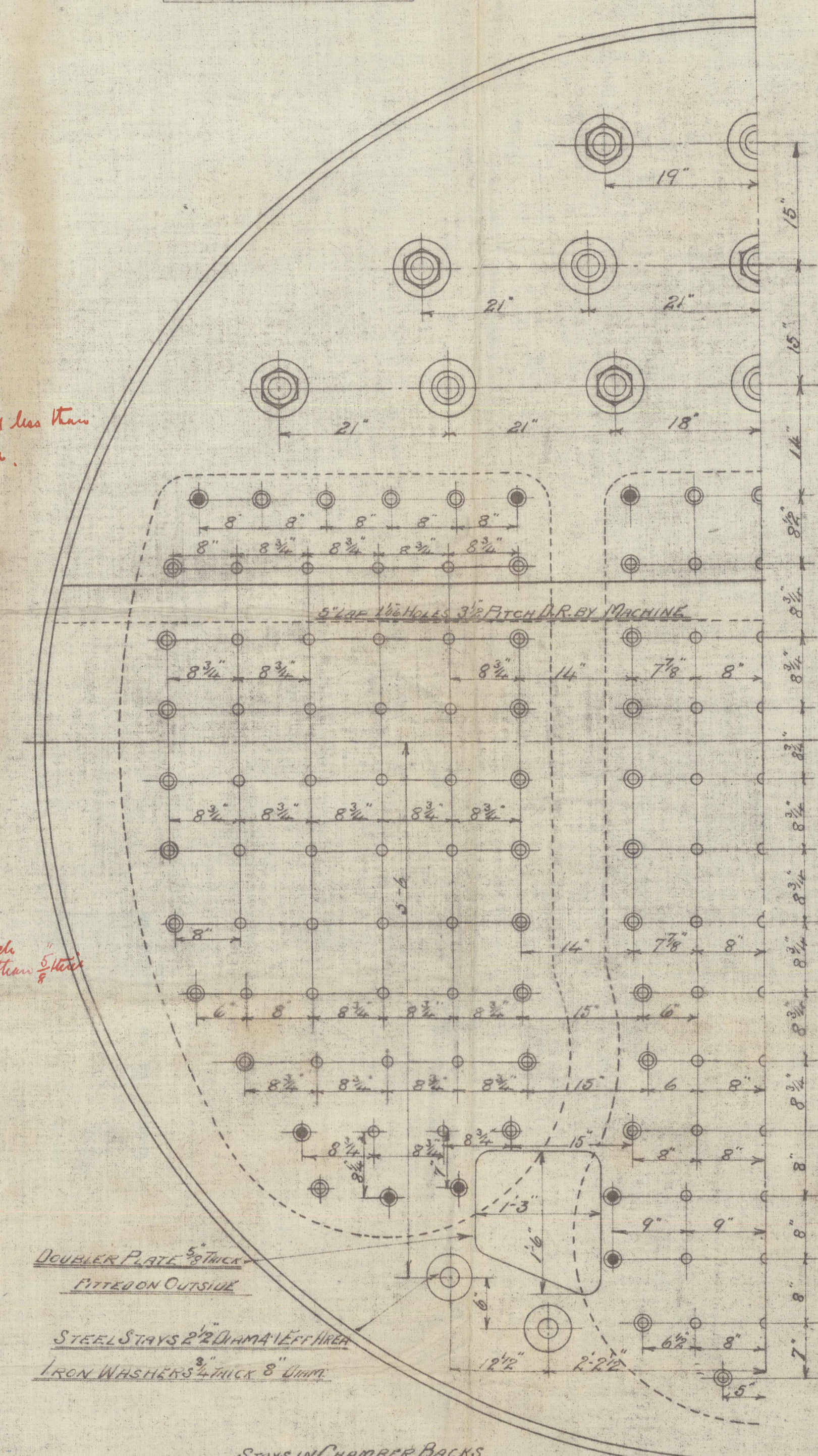
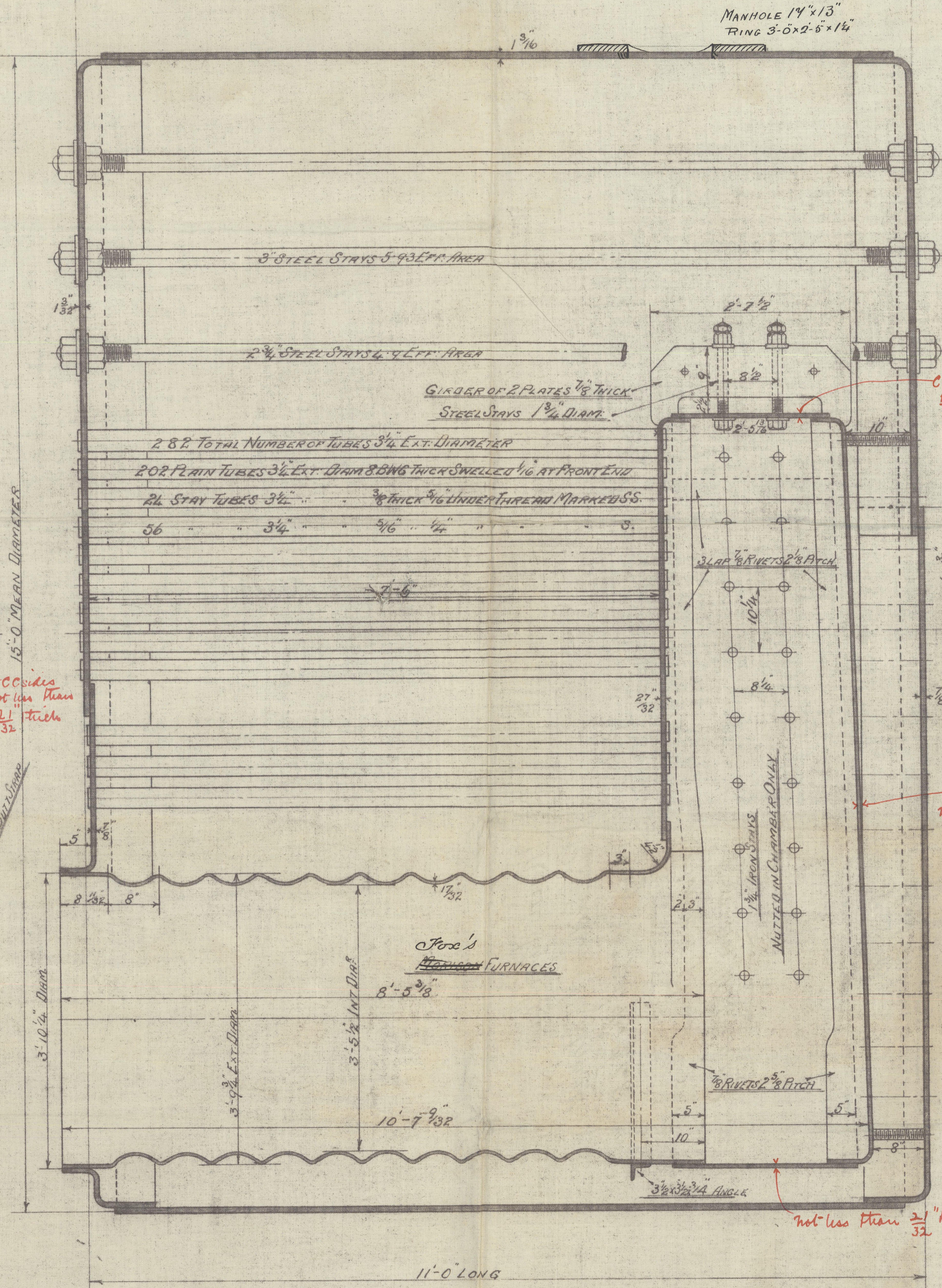
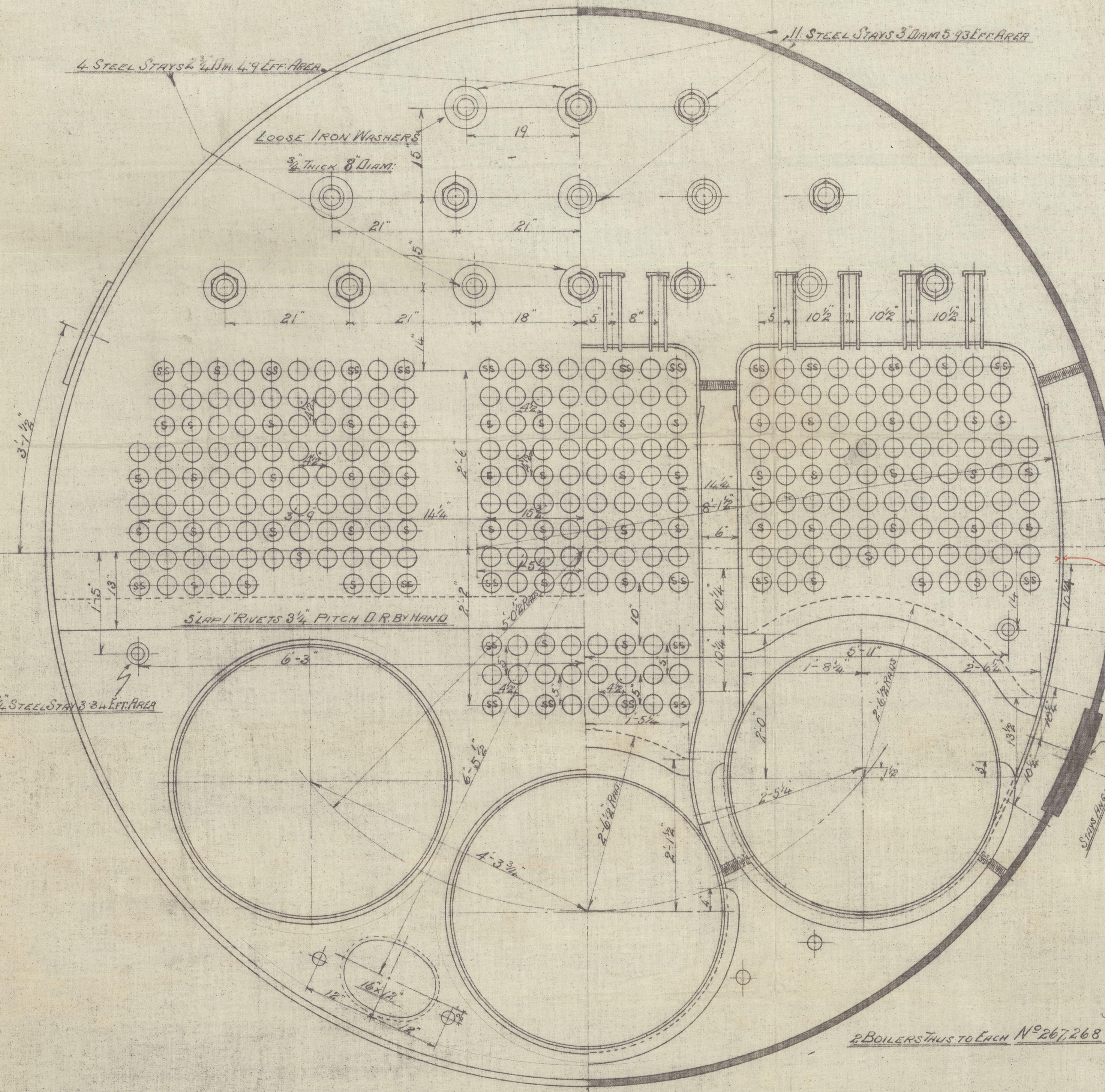
Ln 21. 12. 03.

HEATING SURFACE	
TUBES	1796
FURNACES	128
CHAMBERS	245
FRONT TUBE PLATE	31
ONE BOILER TOTAL	2200



THICKNESS OF PLATE	
SHELL	1 3/16
BUTTS	1 1/8
TOP OF ENDS	1 3/32
BOTTOM OF FRONT	1/8
BOTTOM OF BACK	1/8
BACK TUBE PLATE	27/32
GIRDERS	7/8
FURNACES	1 1/8
COMB. CHAMBER TOPS	1/16
DO: SIDES & BOTTOM	1/16
DO: BACKS CENTRE	5/8
BACK WINGS	5/8

WING TUBE PLATES 1 3/16 THICK



TO PASS LLOYD'S SURVEY FOR A WORKING PRESSURE OF 170 LBS PER SQ. INCH

TENSILE STRENGTH OF SHELL PLATES AND BUTT STRAPS 28 TO 32 TONS	
- DO -	OF OTHER PLATES 26 TO 30 TONS
- DO -	OF LONGITUDINAL STAYS 27 TO 32 TONS
- DO -	OF STEEL SCREW STAYS 26 TO 30 TONS

BOILERS N°267-268

MESS^{RS} R. ROPNER AND SONS S/S N° 406-407

SCALE 1"=1 FOOT



Cal.
21. 12. 03



Main Boilers
Richardsons Westgarth
Eng Nos 267 & 268.

Ropner & Sons
S. S. Nos 406 & 407



S S "Crane"
Mat Rpt. no 3904

S S "Stork"
Mat Rpt. no 3947

RETAIN

W466-0136



© 2020

Lloyd's Register
Foundation