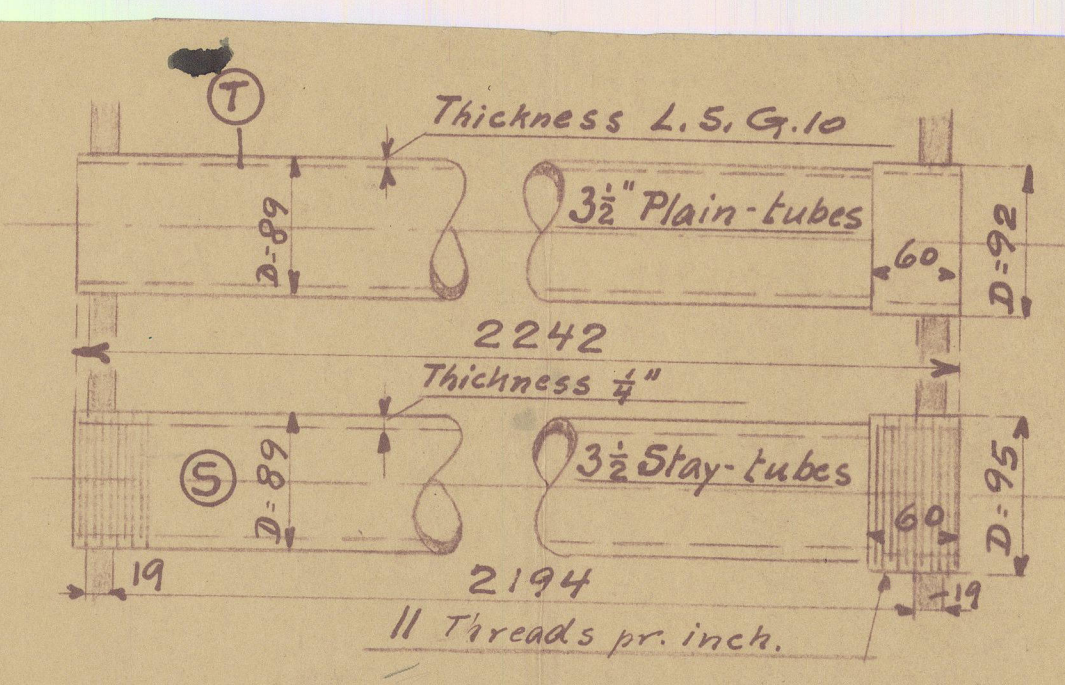
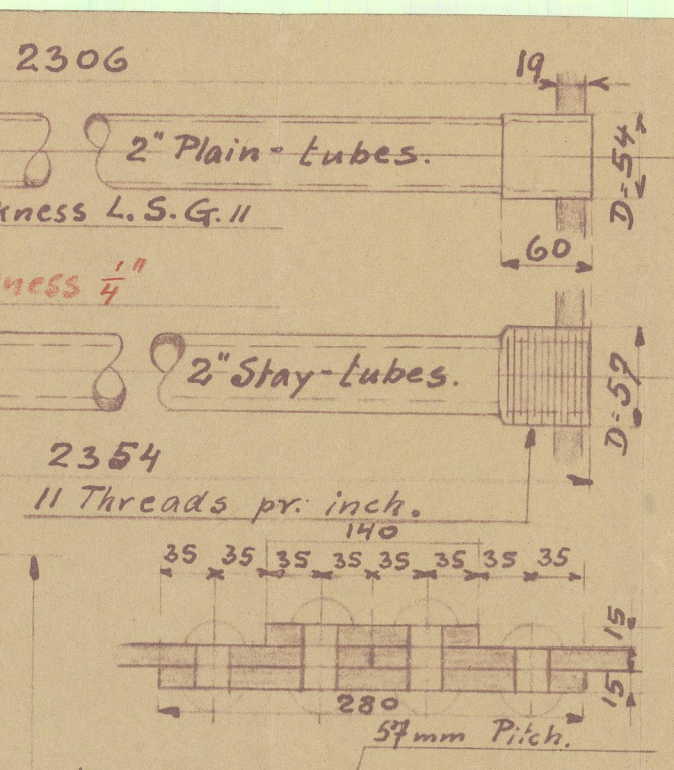
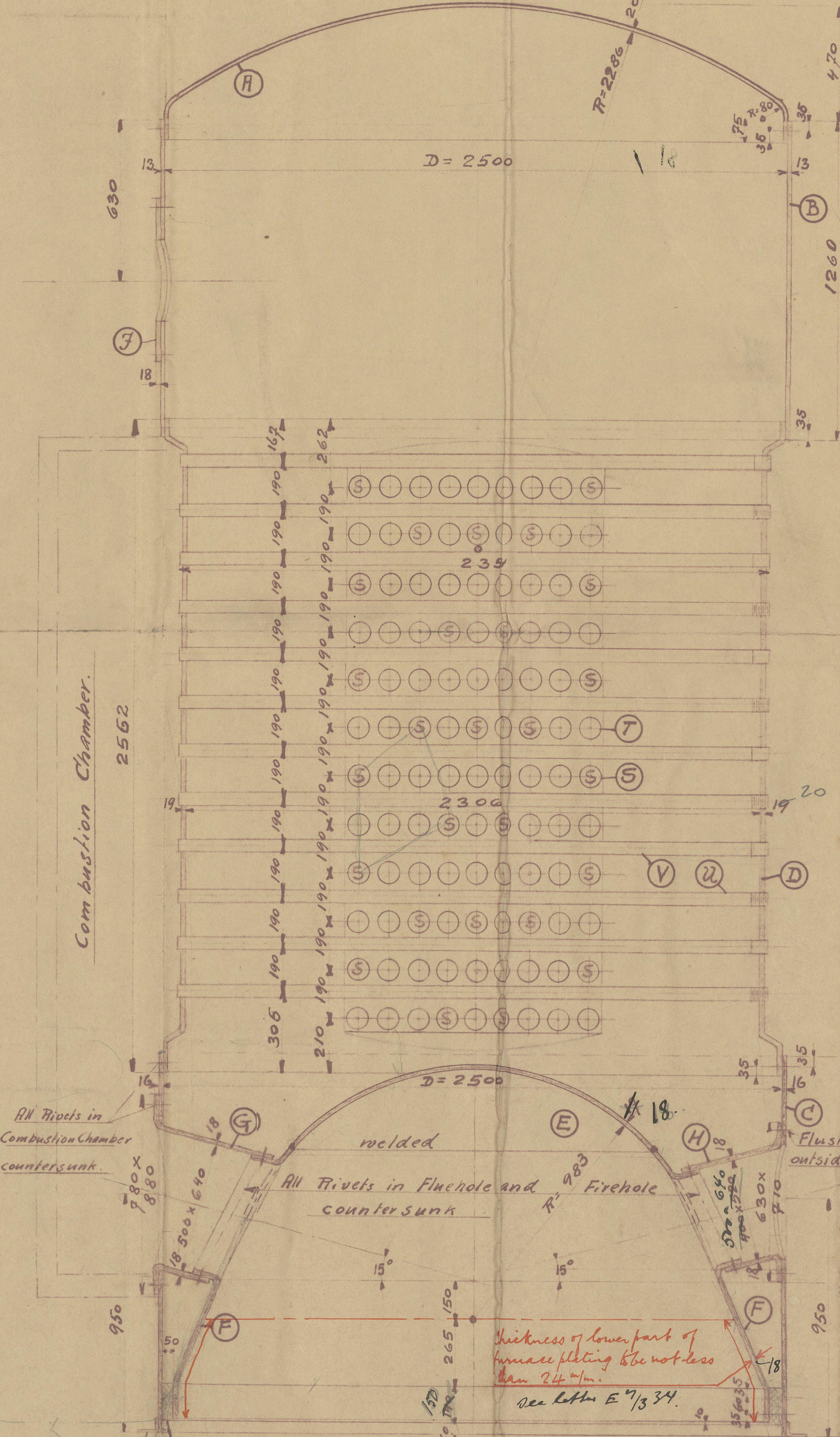
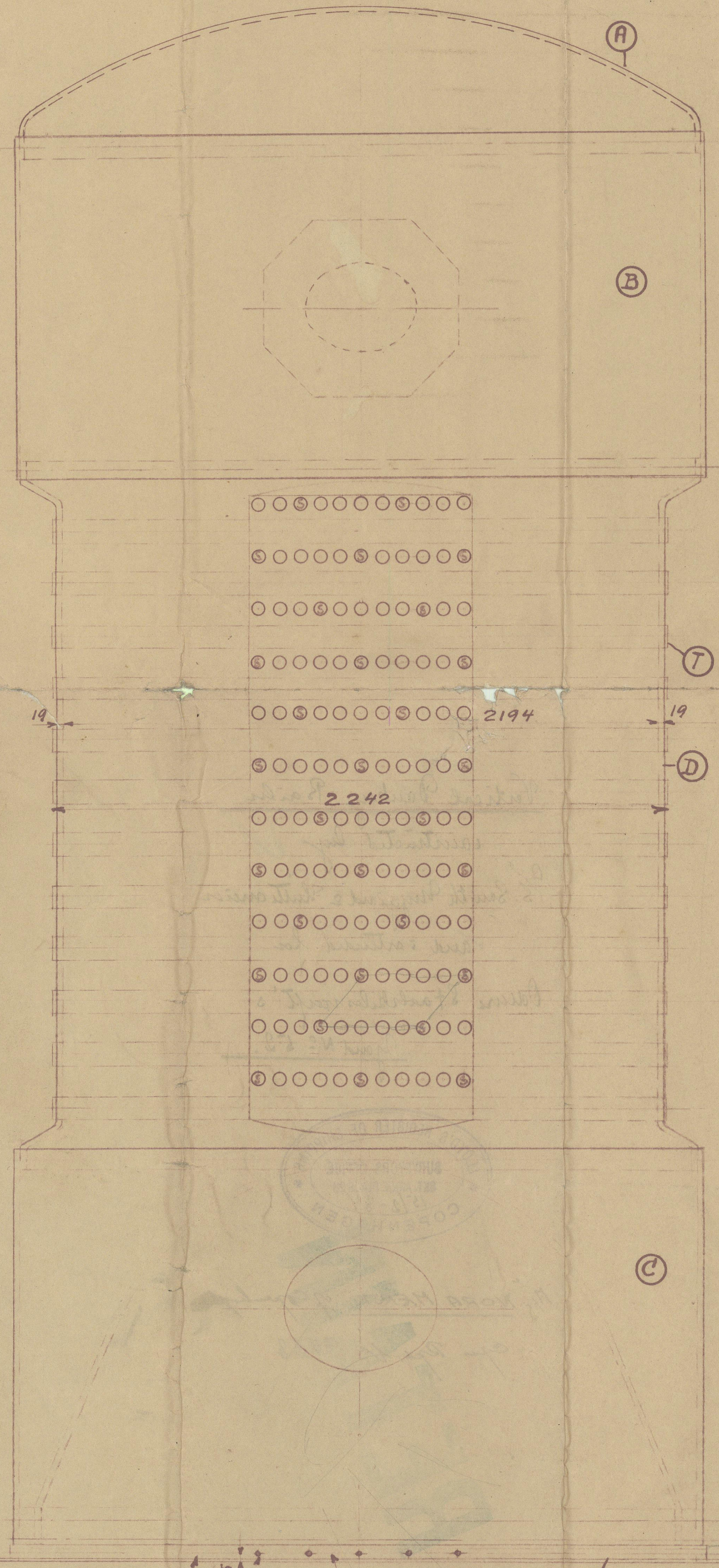


24/2/34



Heating Surface.

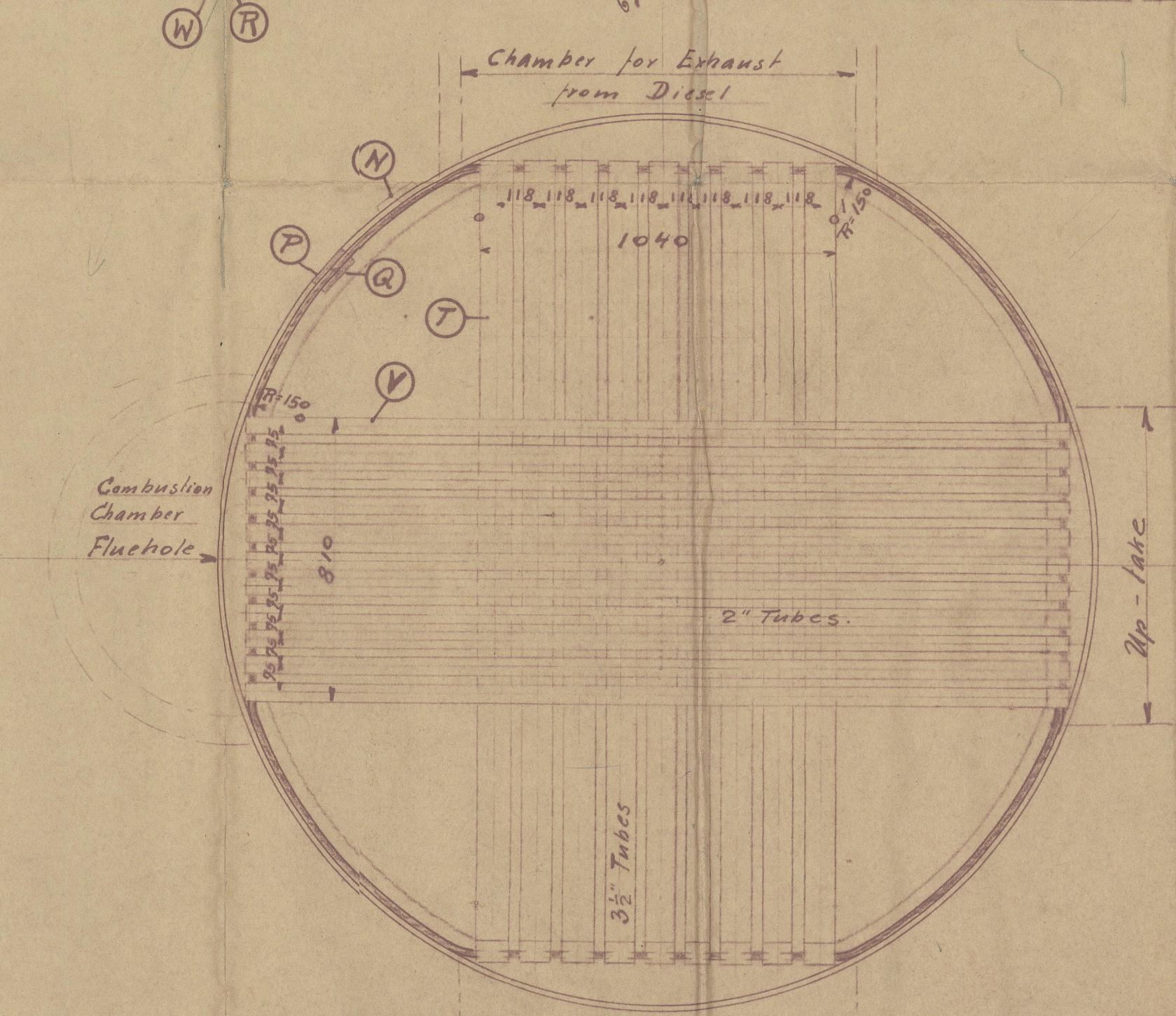
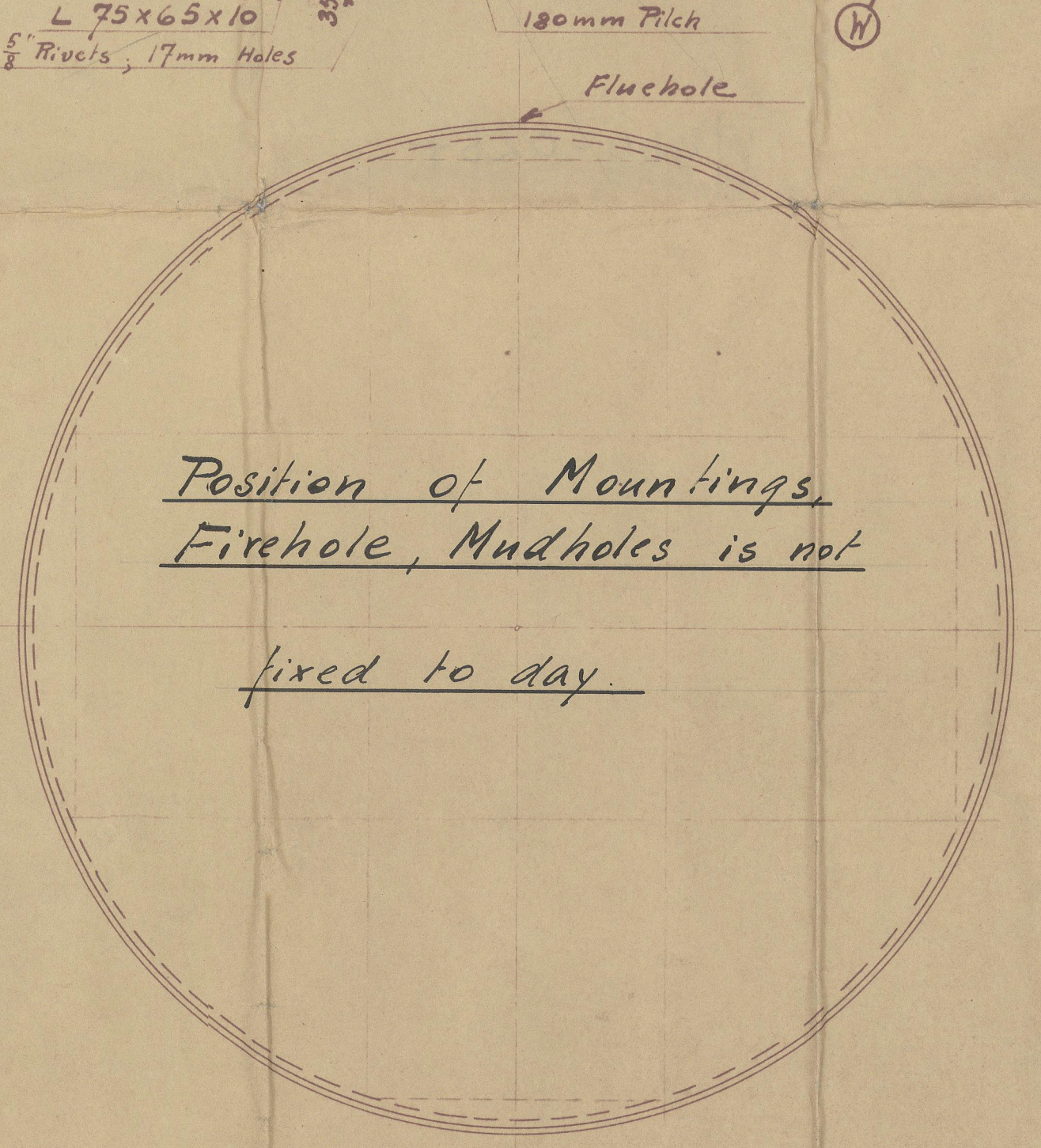
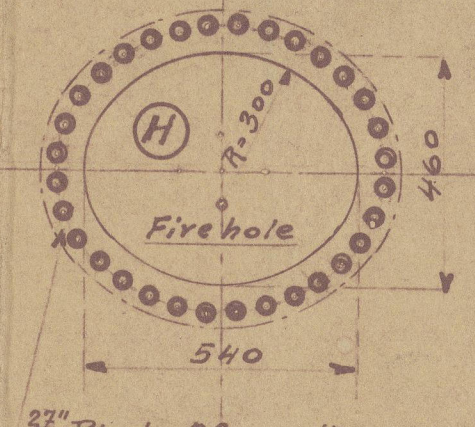
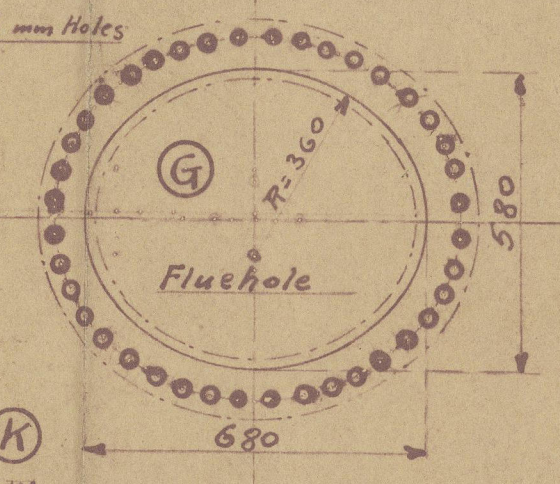
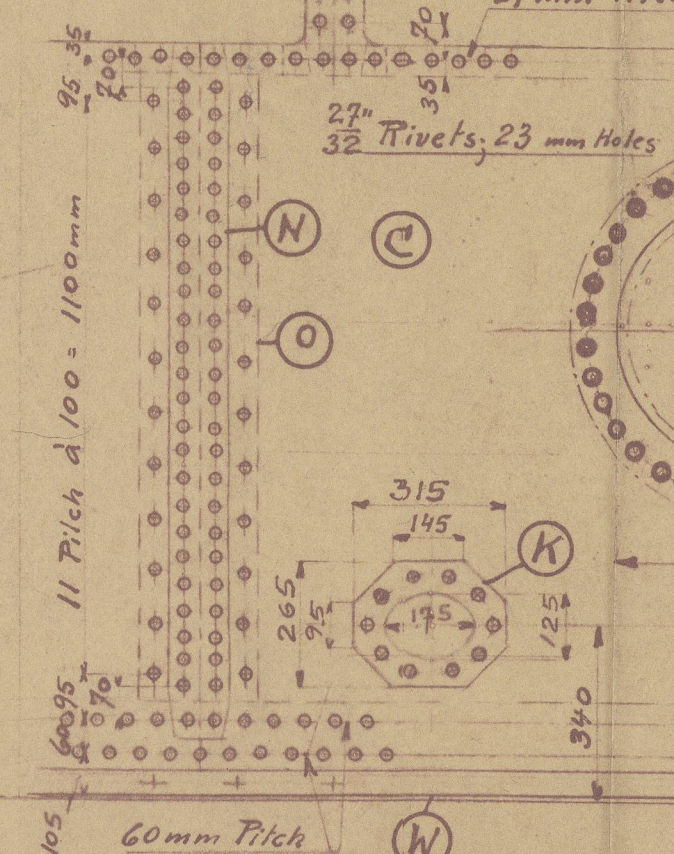
For Oil-Burners:	
Furnace:	6,2 m ²
Tube Plates:	4,3 m ²
Tubes:	48,5 m ² 59,0 m ²
For Exhaust:	
Tube Plates:	3,5 m ²
Tubes:	65,0 m ² 68,5 m ²
Total	127,5 m ²

Lloyds

Crown	15.26. (25-1)	= 104 Lb
Plate	100-23. 100 = 77%	
Rivets	100.23.0.83. (2.1875+1)	= 197%
Shell	26.3.38.0.5 = 197%	
Tube-Plate	19.0.45.100 = 50%	
Tube-Plate	57-23. 100 = 60%	
Rivets	100.23.0.83.1.1.875	= 82%
Tube-Plate	26.3.25.0.75 = 82%	
Tube-Plate	27.5.96	= 130 Lb
Tube-Plate	24-21.26.50	= 103 Lb
Furnace-Crown	27.5. (21-1)	= 137.5 Lb
Furnace-conical	50. 83. [10. (21-1) - 25]	= 105 Lb
Ogee-Ring	140. (64-1) 2	= 240 Lb

All Rivets 32" Tensile Strength: 26-30 T₅₀ inch.
Elongation at Break: 25%
All Holes 23mm.

Estimated expansion: 776 in D.T.H.S



W	L	Ring	Material	Tensile Strength	Elongation	Remarks
102	2"	Plain-tubes	Mild-Steel	28-32 T ₅₀ inch	20%	
30	2"	Stay-tubes		28-32 T ₅₀ inch	20%	
81	3 1/2"	Plain-tubes		26-30 T ₅₀ inch	23%	
27	3 1/2"	Stay-tubes		26-30 T ₅₀ inch	23%	
1		Ogee-Ring		26-30 T ₅₀ inch	23%	
1		But-strap		26-30 T ₅₀ inch	23%	
1		"		26-30 T ₅₀ inch	23%	
1		"		26-30 T ₅₀ inch	23%	
1		"		26-30 T ₅₀ inch	23%	
1		But-strap		26-30 T ₅₀ inch	23%	
4		Mudholes		26-30 T ₅₀ inch	23%	
1		Manhole		26-30 T ₅₀ inch	23%	
1		Firehole		26-30 T ₅₀ inch	23%	
1		Fluehole		26-30 T ₅₀ inch	23%	
1		Furnace-conical		26-30 T ₅₀ inch	23%	
1		Furnace-Crown		26-30 T ₅₀ inch	23%	
1		Tube-Plate		26-30 T ₅₀ inch	23%	
1		Shell		28-32 T ₅₀ inch	20%	
1		Shell		28-32 T ₅₀ inch	20%	
1		Crown		26-30 T ₅₀ inch	23%	

SMITH, MYGIND & HÜTTEMEIER
KØBENHAVN

DATE 13. 2. 34. TECH. NR. 39 868

SCALE 1:15

Vertical - Boiler.
System S.M.K.H.

Diam: 2500mm, Height: 5642mm

Working pressure: 7 Atm.
Hydraulic test pressure: 14 Kg/cm²

23/2/34

W 464-0215.3

Vertical Tanker Bailer

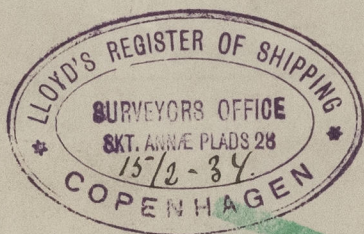
constructed by

A/S. Smith, Mygind & Thümmen

and intended for

Odense Staalskibsværft's

Yard No 52.



M/S "NORA MERSE" of Copenhagen

Cop. Rpt. No 9423



© 2020

Lloyd's Register
Foundation

W464-0215.3

2 (165 x 20)



© 2020

Lloyd's Register
Foundation