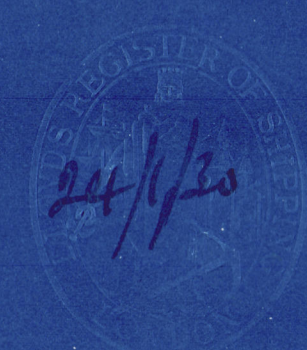


Nº 1449.



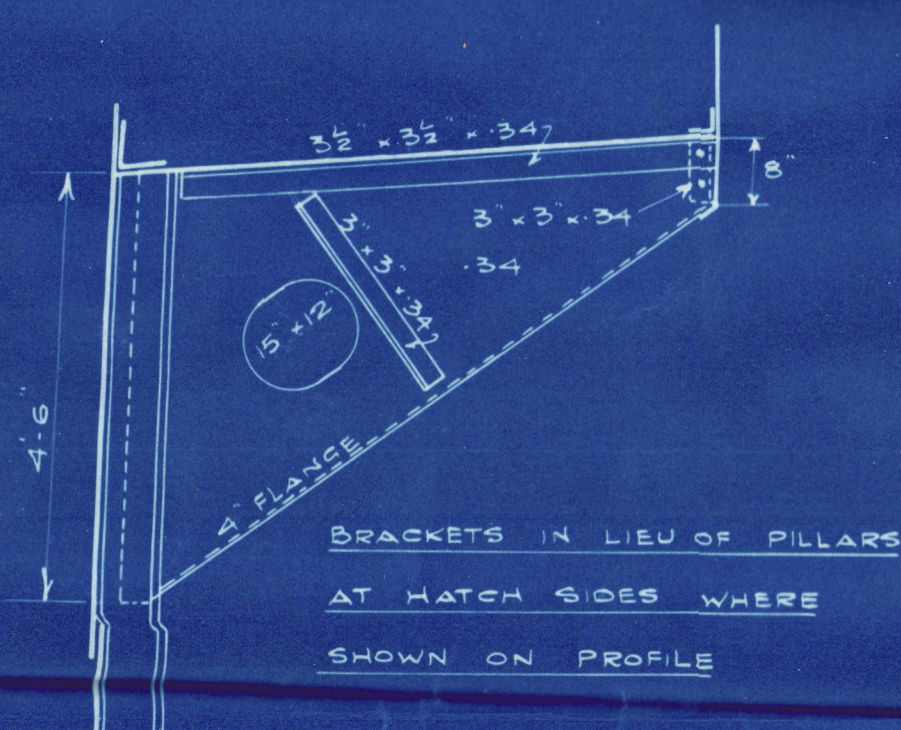
MIDSHIP SECTION.

DIMENSIONS - LENGTH BP 290-0 * BREADTH MLD 42-10 * DEPTH MLD 20-10

CLASS 100 A.I. LLOYDS

SCALE: 1" = 1 FOOT

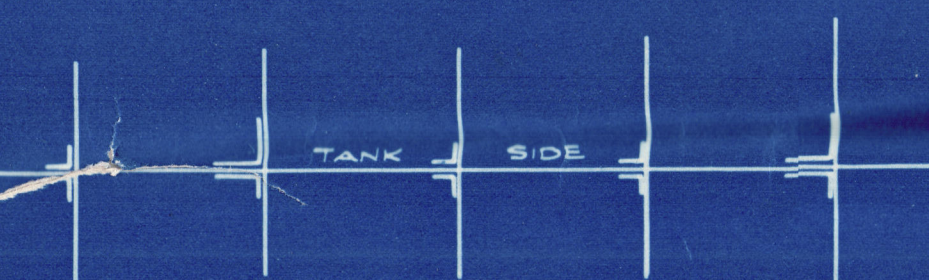
NUMERALS			
L	=	290-0	
B	=	42-10	
D	=	20-10	
1ST No	L x D	=	6040
2ND No	L x (B+D)	=	18461
100	UPPER DECK	=	13.92
100	BRIDGE DECK	=	10.23
0	FOR FRAMING	=	17.17
0	WITH NORMAL BEAM KNEE		
4	NORMAL FRAME KNEE		17.92
	FRAME KNEE ABOVE NORMAL	1-6-12	17.5
			17.17



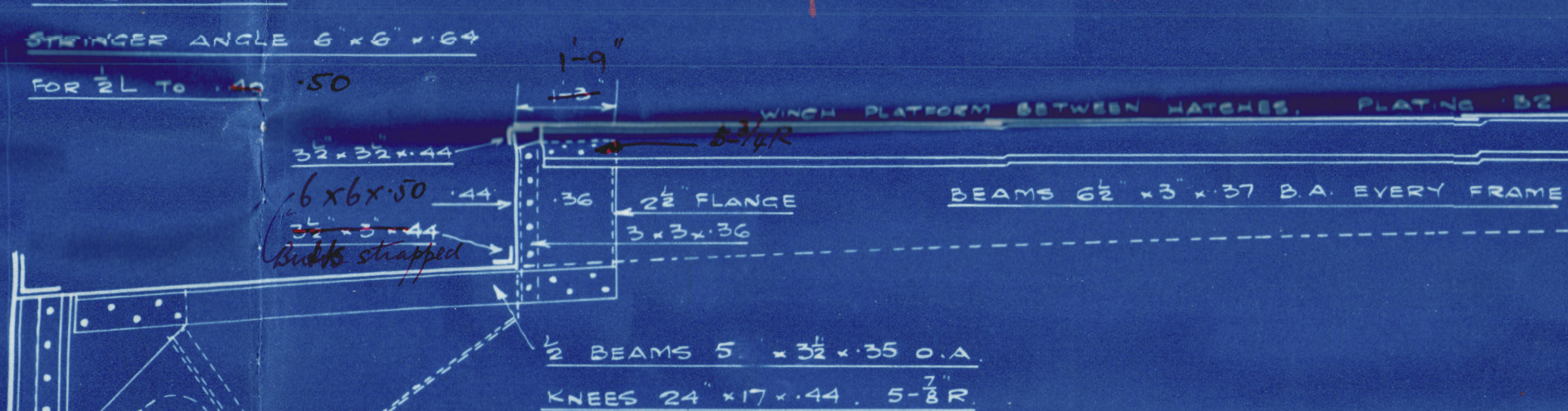
EQUIPMENT NO.			
L x (B+D)			18461
ERECTOR 116 x 7.5			652
HOUSES 66 x 7.5 x 5			247
			19360

EQUIPMENT			
2 BOWER ANCHORS	38 1/2	CHTS EACH STOCKLESS	
1 " "	32 1/2	" "	
1 STREAM	"	10	EX STOCK
240 FATHOMS	1 1/2	STUD CHAIN CABLE	
75	4 1/2	STEEL WIRE STREAM	
90	4	" "	
2 @ 90	2 1/2	" "	
2 @ 90	2 1/2	" "	
		HAWSEYS	
		WARPS	

RULE, GUSSETS EVERY 3RD FRAME AFT OF 1/2 L, EVERY 2ND FRAME FORD OF 1/2 L. PROPOSED SINGLE ATTACHMENT ANGLE TO TANK SIDE & KNEE 6-6-45 EVERY 3RD FRAME AFT OF 1/2 L AND EVERY 2ND FRAME FORD OF 1/2 L.



STRINGER PLATE IN WELLS 76-100 *see note on profile*
FOR 1/2 L TO 100-05
STRINGER ANGLE 6-6-45
FOR 1/2 L TO 100-05



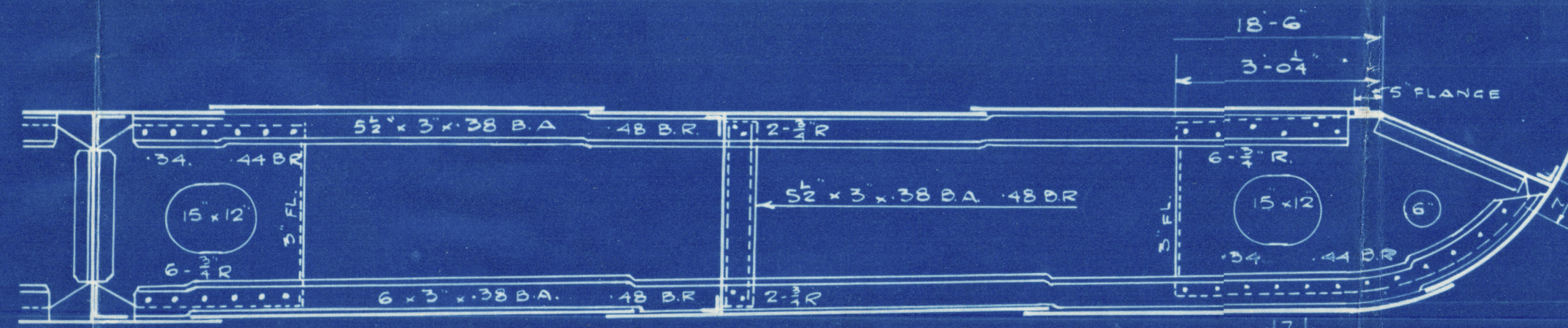
FORGINGS	
STERN POST	8 1/2 x 6 1/2
RUDDER	7 1/2 x 5 1/2
STEM BAR	7 1/2 x 2 1/2
BOSS PLATE	52

CENTRE GIRDER 35 x 44 FOR 1/2 L 36 ENDS
54 BR BUTTS TREBLE TO DOUBLE
TOP BAR 5 x 5 x 42 SINGLE FOR 1/2 L TO 40 ENDS DOUBLE 3-3-42 IN ER & UNDER THRUST 3 x 3 x 40 FORD OF 3/5 L
BOTTOM BAR 3 1/2 x 3 1/2 x 46 FOR 1/2 L 44 ENDS
DOUBLE FORD AFT OR 6-6-45 SINGLE
EXCEPT FORD OF 1/2 L
VERTICALS 3-3-34 SINGLE 44 BR
5-5-34 SINGLE UNDER ENGINE THRUST
5-5-44 UNDER BOILER BEARERS

MARGIN PLATE 40 HOLDS 4 ER 50 BR
RULE DEPTH 25 1/2 PROPOSED 3 1/2
BUTTS DOUBLE ALL FORD & AFT
ANGLE 3-3-42
VERTICAL ANGLE 3-3-34 SINGLE 44 BR
INCREASED IN PANTING AREA
TANK OUTSIDE KNEES 37-47 BR

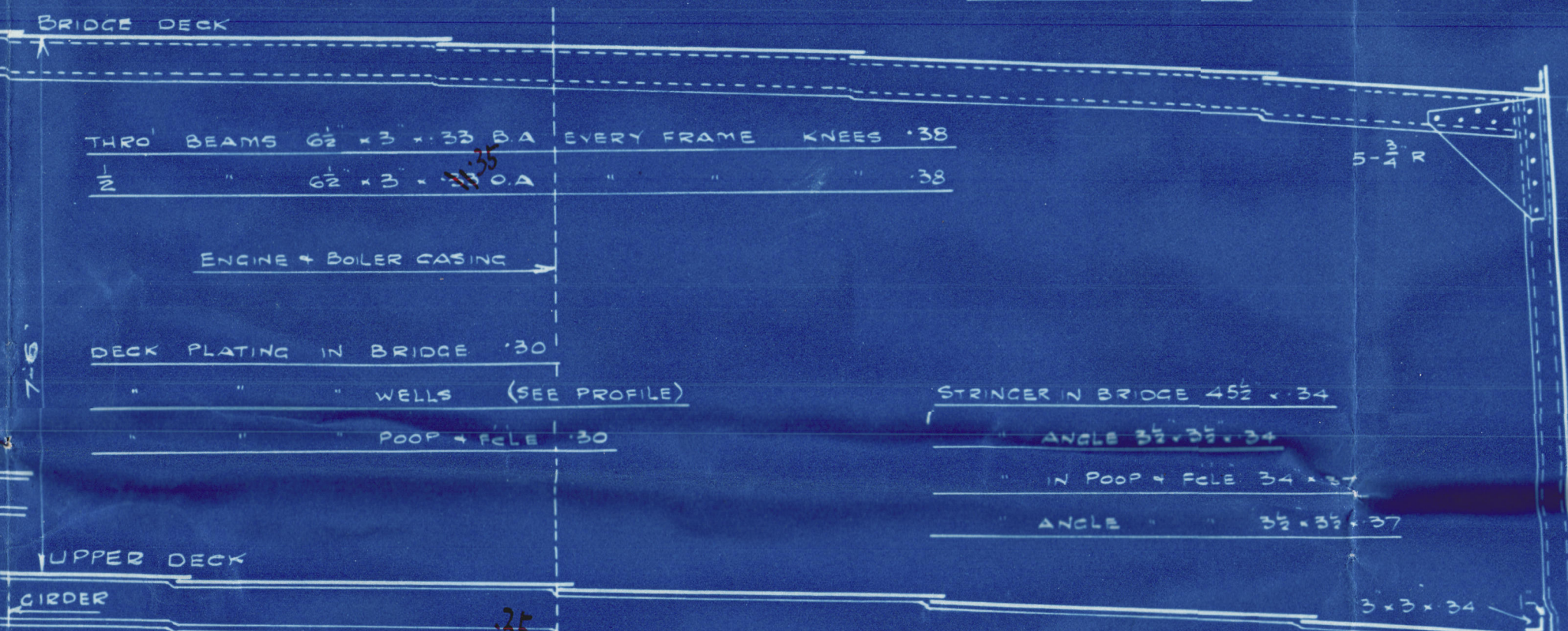
BOTTOM SHELL 47 FOR 1/2 L 40 ENDS BUTTS TREBLE TO DOUBLE WHERE NOT EXCEEDING 42
THREE STAKES NEXT TO KEEL TO HAVE MIDSHIP THICKNESS MAINTAINED FORWARD TO RULE POSITION OF COLLISION BULKHEAD

KEEL 44 1/2 x 59 FOR 3/5 L 55 ENDS
BUTTS TREBLE RIVETED FORD AFT



BRIDGE DECK PLATING	30 BETWEEN OPENINGS
"	34 ABBEAST
POLE	30 UNSHEATHED
POOP	26 SHEATHED

BRIDGE DECK STRINGER	46 x 42
ANGLE	3 1/2 x 3 1/2 x 42
POOP DECK STRINGER	27 x 31
ANGLE	3 x 3 x 31
POLE DECK STRINGER	27 x 32
ANGLE	3 x 3 x 32



THIRD BEAMS IN BRIDGE	8 1/2 x 37 B.A. EVERY FRAME KNEES 24 x 17 x 40 5-3 R
"	6-3 x 24 B.A. 24 x 17 x 40 5-3 R
"	WELLS 5 x 32 x 35 O.A. 24 x 17 x 44 5-3 R

FRAMES SPACED 24" THROUGHOUT
MAIN FRAMES 8 x 3 x 42 B.A. OR 8 x 3 x 40 B.A. N.B.S.
INCREASED 06 IN BOILER ROOM & PERMANENT BUNKERS
PEAK FRAMES 5 1/2 x 3 x 42 B.A.
BRIDGE FRAMES FOR 4 SPACES AT EACH END 4 ON ALT. FRAMES 5 x 3 x 42 B.A. SCARPHED 15 TO MAIN FRAMES
POOP TWEEN DECK FRAMES 5 x 3 x 42 B.A. ON ALT. FRAMES
BRACKETED TO UPPER DECK WITH INTERMEDIATE FRAMES
31 x 3 x 32 NOT ATTACHED AT BOTTOM
Panting frame 10 x 3 1/2 x 52 L.M.B.S. or 10 x 3 1/2 x 48 L.O.B.S.

SOLID FLOORS 34 44 BR SPACED AS PER PROFILE
SIDE GIRDERS 34 44 BR
REVERSE FRAMES ON FLOORS 3 x 3 x 34 44 BR SINGLE
DOUBLE IN E.R. UNDER THRUST & BOILER BEARERS
OR 5 x 5 SINGLE IN E.R. 4 x 6 UNDER BOILER BEARERS
FRAMES ON SOLID FLOORS 3 x 3 x 34 SINGLE
DOUBLE FORD OF 3/5 L OR 5 x 5 SINGLE
SOLID FLOORS ON TANK ENDS INCREASED 08
(EXCEPT IN E.R.) AND STIFFENED AS PER RULE
SIDE GIRDER VERTICAL ANGLES 3 x 3 x 34 44 BR
Top 3 x 3 x 34 44 BR
Bottom 3 x 3 x 34
EXTRA GIRDER UNDER ENGINE THRUST

BRIDGE SIDE PLATING 45
BUTTS TREBLE
POOP SIDE PLATING 33
BUTTS SINGLE
POLE SIDE PLATING 35
BUTTS SINGLE

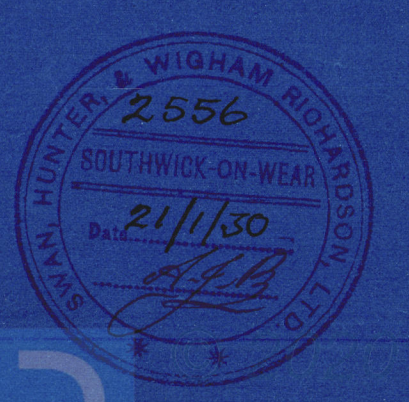
G OUT SHEERSTAKE RULE 48 x 69 FOR 1/2 L 40 ENDS
PROPOSED 72 x 57 FOR 1/2 L 40 ENDS
INCREASED AT BREAK (PLAN TO BE SUBMITTED)
47 IN WAY OF BRIDGE
BUTTS TREBLE TO DOUBLE WHERE NOT EXCEEDING 42 *at ends*

F IN RULE 48 x 59 FOR 1/2 L 40 ENDS
PROPOSED 72 x 54 FOR 1/2 L 40 ENDS
47 IN WAY OF BRIDGE
BUTTS TREBLE TO DOUBLE WHERE NOT EXCEEDING 42

E OUT 72 x 47 FOR 1/2 L 40 ENDS
BUTTS TREBLE TO DOUBLE WHERE NOT EXCEEDING 42

D IN 47 FOR 1/2 L 40 ENDS
BUTTS TREBLE TO DOUBLE WHERE NOT EXCEEDING 42

BLICE KEEL 9 x 40 BULB
3 1/2 x 3 1/2 x 40 ANGLE



W463-01265

①

SUNDERLAND

SWAN HUNTER & W. R. LD

MIDSHIP SECTION

N° 1449 & 1451

S/S "Sea Venture"

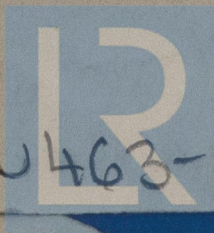
SUNDERLAND RPT. No. 30464

S/S. Sea Rambler 1449

RETAIN

© 2020

W 463-0253



Lloyd's Register
Foundation