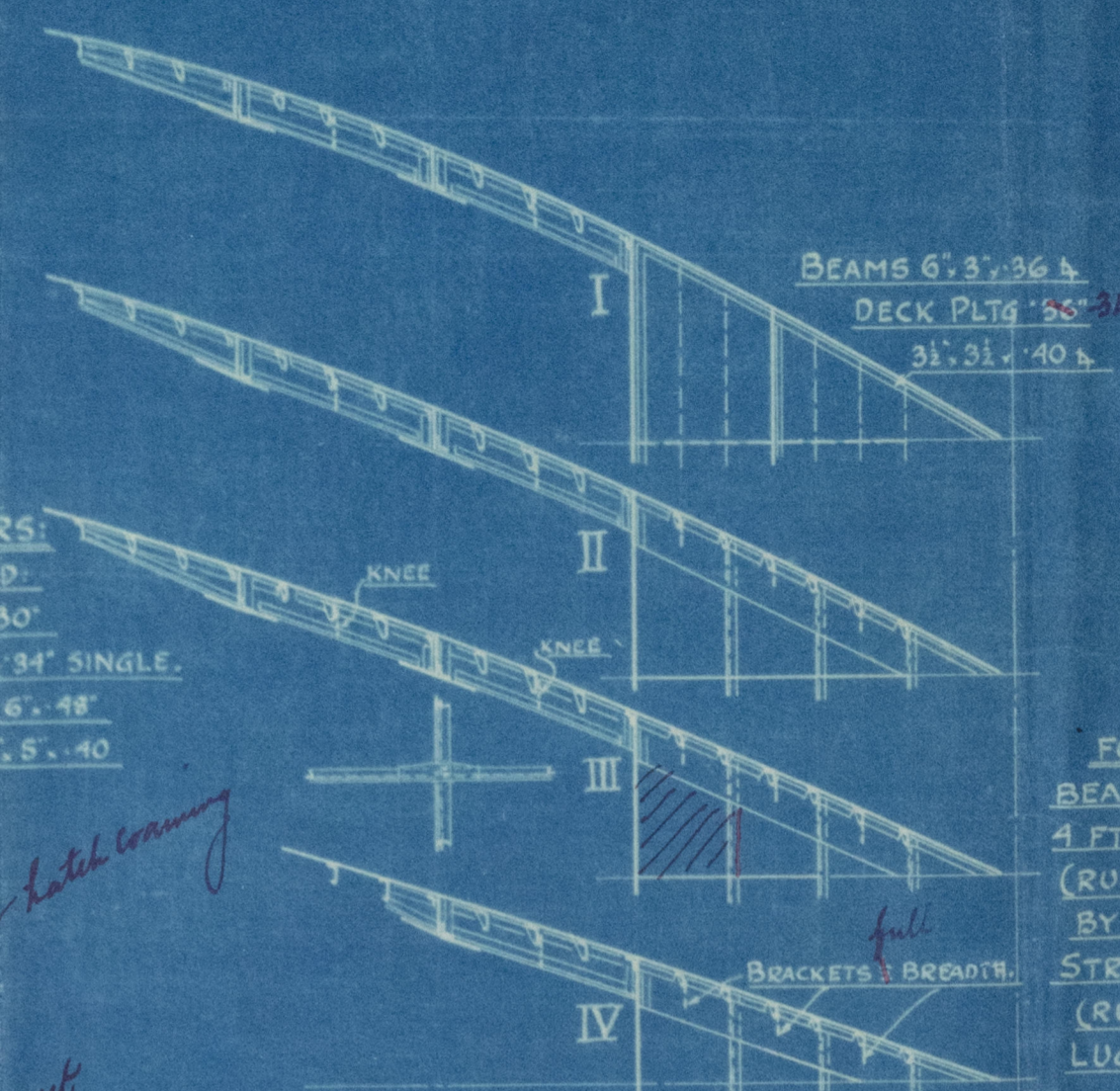
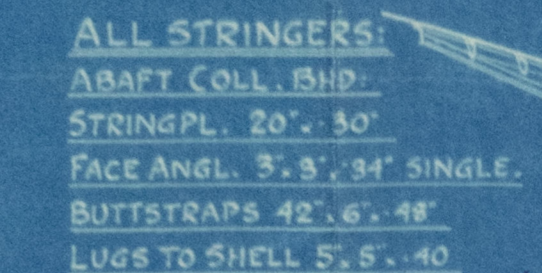
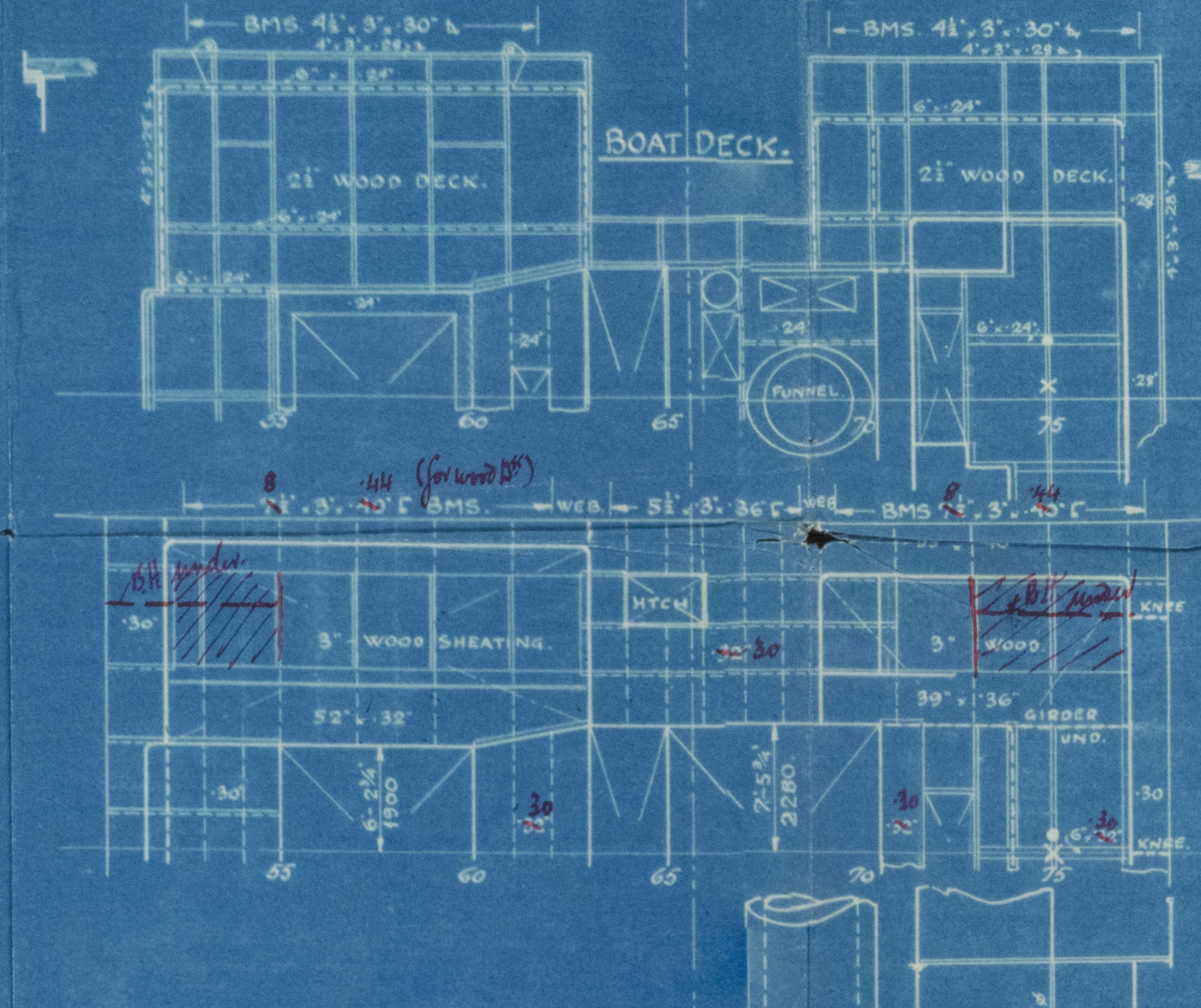
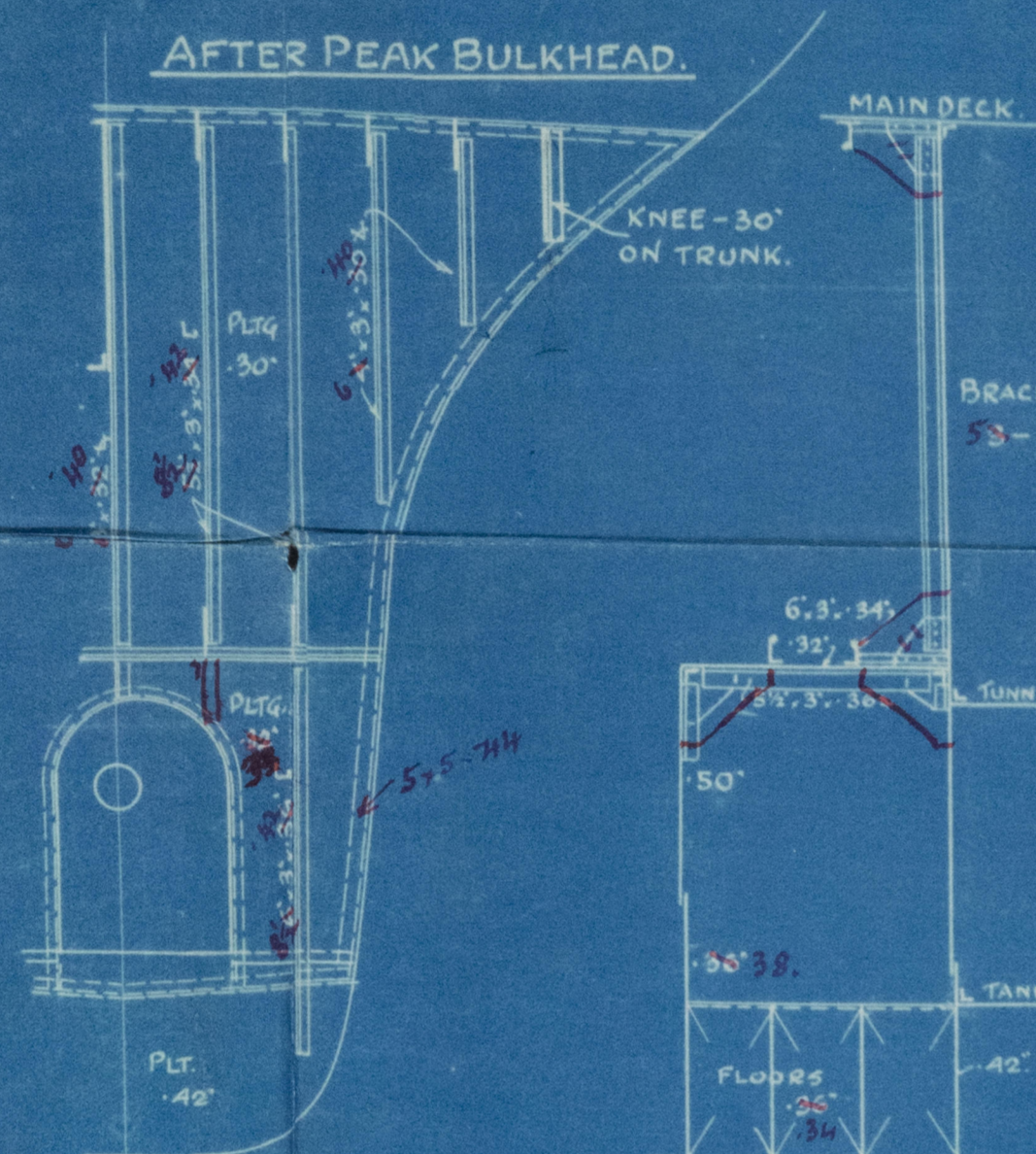
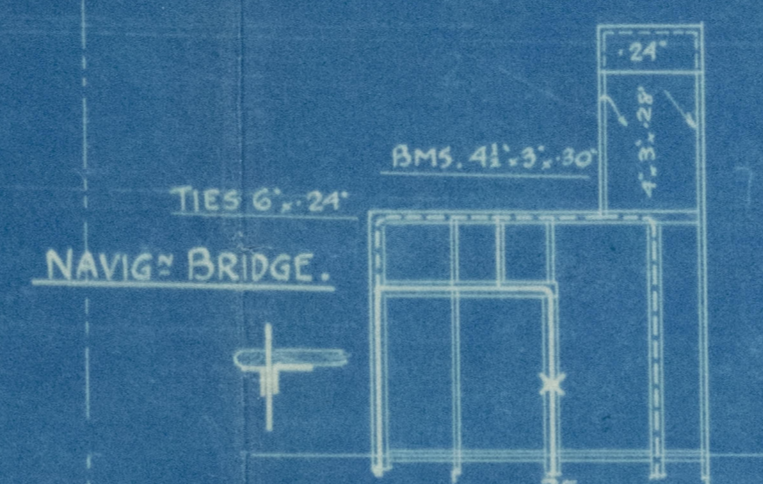
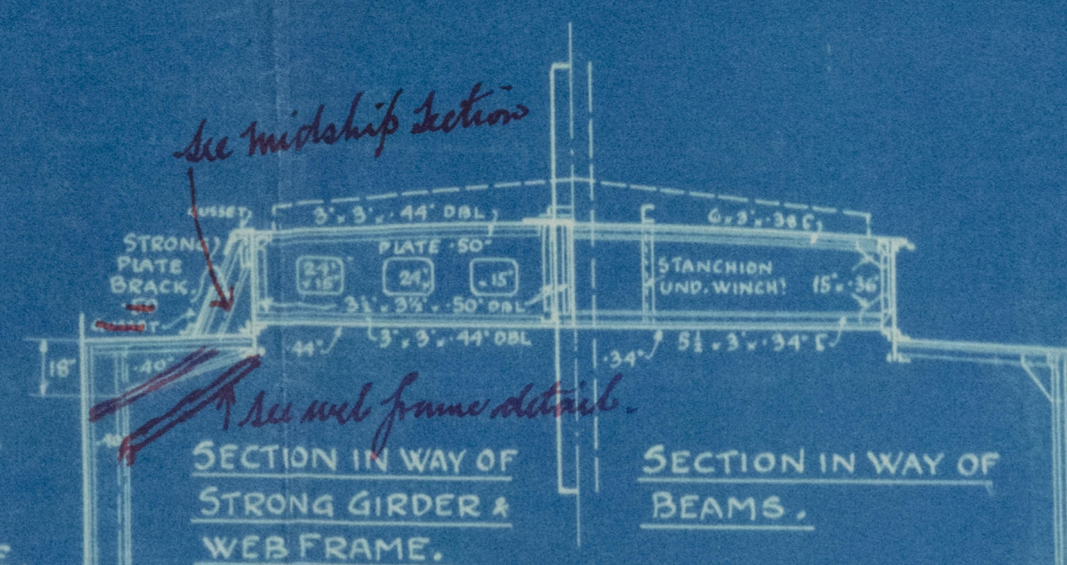


BUILDING No 9.  
PROFILE AND DECKS.

TYPE: SINGLEDECKER WITH POOP, LONG BRIDGE & FOREC'L.

$$\frac{L \times D = 6300}{L \times (B+D) = 18750}$$

CLASS: LLOYDS 100 A. 1. +. A & C.P.



FORWP OF COLL. BHD:  
BEAMS <sup>5/8"</sup> 3" x <sup>3/4"</sup> 34" C  
4 FT. SPACG OF TIERS.  
(RULE: ~~5/8"~~ 3" x ~~3/4"~~ 34" C  
BY 6 FT. SPACG OF TIERS)  
STRINGER RATE: 24" x 34"  
(RULE: 2 1/2" x 34")  
LUGS TO SHELL PL. 5" x 5" x 40"



001.  
 23.0.22.

13 FEB 1953  
 KONGE VERFT  
 ØSTERS MÅSKINER

DATO	TEGN	KONT	KONT	KONT	AREW
1953		AS	KONGE VERFT	AFD SKR	5.9. K.3

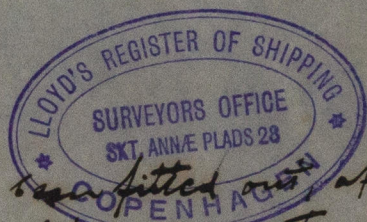
RETAIN

Køge Værft, 4/5.

Køge, Danmark.

Longitudinal Section  
& Deck plans.

Newbuilding No 9.

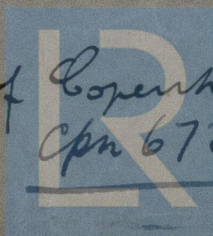


The vessel has been fitted out after  
launch, by the Kjöbenhavn Skibsbyggeri  
& Skibsverft, Copenhagen, as their No. 9.  
No. K. 9.

s.s. Scitia of Copenhagen,  
Cpn 6737.

Copy to Bureau 3. 23.

3463-0047



© 2020

Lloyd's Register  
Foundation