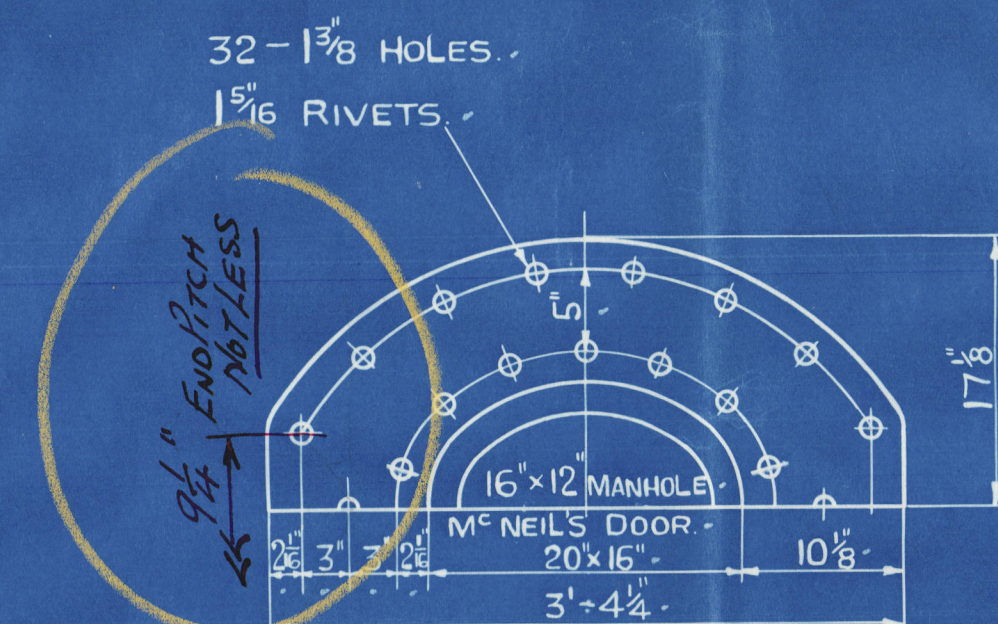
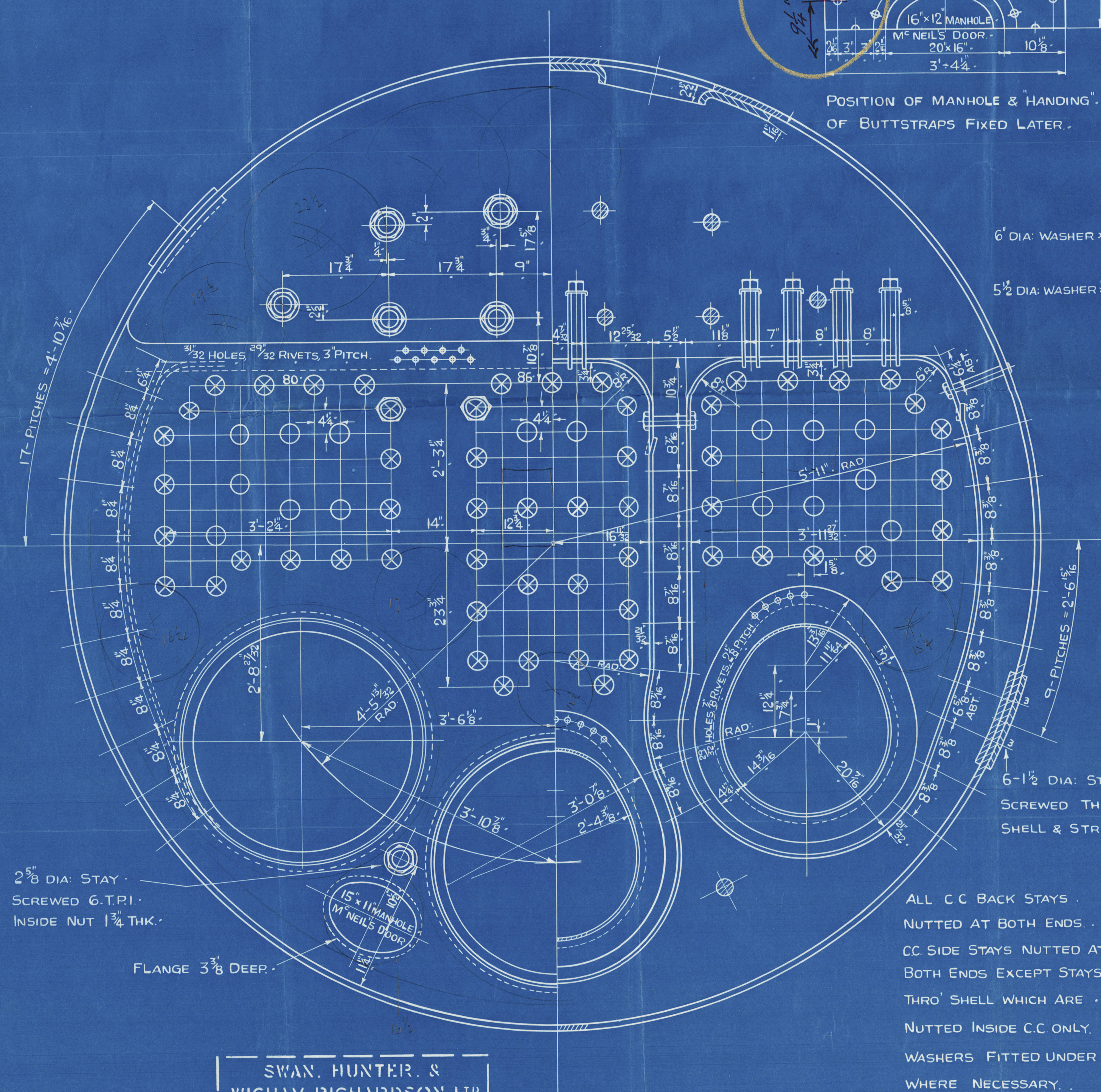


ALL PLATES OF STEEL ✓  
ALL STAYS OF STEEL ✓  
ALL RIVETS OF STEEL ✓  
ALL TUBES OF WROG IRON ✓

WORKING PRESSURE = 180 LBS / 0"  
TEST PRESSURE = 320 LBS / 0"



POSITION OF MANHOLE & "HANDING"  
OF BUTTSTRAPS FIXED LATER.



2 $\frac{5}{8}$ " DIA: STAY · —  
SCREWED 6.T.P.I. ·  
INSIDE NUT 1 $\frac{3}{4}$ " THK. ·

FLANGE  $3\frac{3}{8}$ " DEEP

SWAN, HUNTER, &  
WIGHAM RICHARDSON LTD  
ENGINEERING DEPARTMENT.  
NEPTUNE WORKS.  
NEWCASTLE-ON-TYNE.  
DATE: \_\_\_\_\_

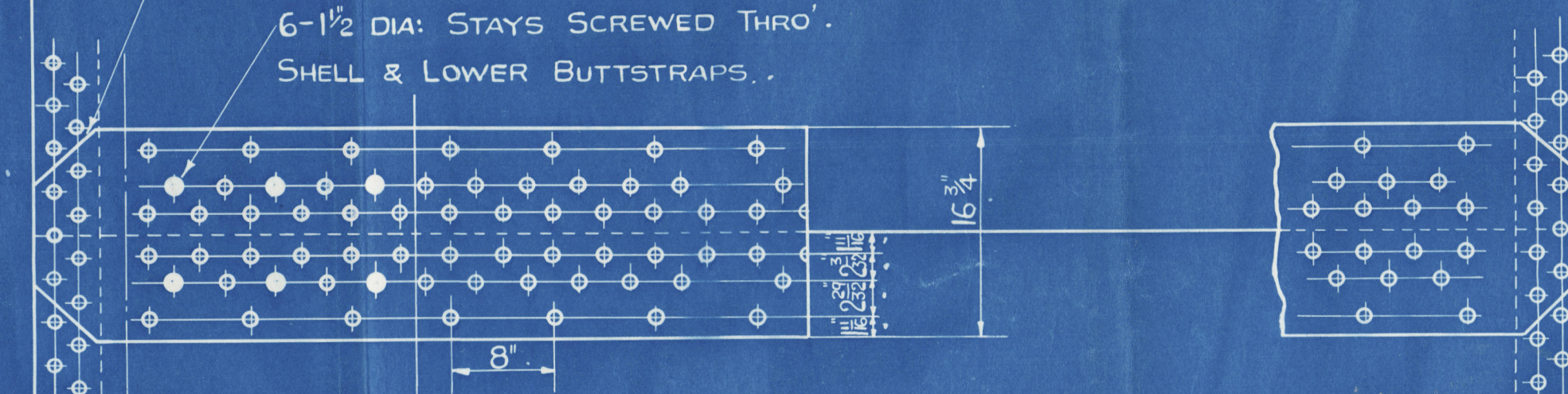
J.H.  
H.W.W.B.  
GLE.

MACHINE RIVETED.  
CIRC<sup>LE</sup> JOINT  $1\frac{1}{8}$ " HOLES,  $1\frac{1}{16}$ " RIVETS, 3.438" PITCH  
14.8 PITCHES, PLATE = 67.27% RIVET = 43.16%

INSIDE BUTTSTRAP SCARPHED TO  
CL OF INNER ROW OF RIVETS.

OUTER BUTTSTRAP  $13\frac{1}{16}$ " THICK.

INNER BUTTSTRAP  $15\frac{1}{16}$ " THICK.



LONG<sup>L</sup> JOINT 1<sup>1</sup>/<sub>8</sub> HOLES. 1<sup>1</sup>/<sub>16</sub> RIVETS, 8" PITCH.  
HYDRAULIC MACHINE RIVETED.  
ALL HOLES DRILLED IN POSITION.

PLATE = 85.937%  
RIVET = 86.94%  
COMBINED = 89.26%

CIRC<sup>1</sup> JOINT 1<sup>1</sup>/<sub>8</sub> HOLES, 1<sup>3</sup>/<sub>32</sub> RIVETS, 3.438" PITCH.  
48 PITCHES, PLATE = 67.27% RIVET = 43.16%

HAND RIVETED.

TOTAL HEATING SURFACE WINGS (2 BOILERS)= 2630  $\text{ft}^2$   
TOTAL HEATING SURFACE CENTRE (2 BOILERS)= 1400  $\text{ft}^2$

TO LLOYD'S SURVEY.

ALL C.C BACK STAYS .  
NUTTED AT BOTH ENDS .  
C.C SIDE STAYS NUTTED AT .  
BOTH ENDS EXCEPT STAYS .  
THRO' SHELL WHICH ARE .  
NUTTED INSIDE C.C ONLY .  
WASHERS FITTED UNDER NUTS .  
WHERE NECESSARY .

ALL COMB. CHAMBER  
RIVETING C'SK.  
ON BOTH SIDES.

PLATE =  $10' - 2\frac{9}{32}$   
11'-0" MEAN LENGTH

Cancelled <sup>see</sup> plan  
appd. 12/6/37 <sup>WST</sup>

6.37 №	DATE
1562	24.5.37

## 2-THUS

# WASTE HEAT & OIL FIRED BOILER

SCALE:- 1" = 1 FOOT. LLOYDS



W462-0047

Messrs Swan Hunter & Wigham  
Richardson's Yard No 1545

Plan of Waste Heat & Oil  
fired donkey Boiler.

RETAIN

SWAN, HUNTER, & WIGHAM  
RICHARDSON LTD.

Regent Tiger.

SHIP NO. 1545

ENGINE NO. 1562

22

Drg. B810.

Waste Heat & Oil Fired  
Donkey Boiler (2 off.)

27 MAY 1937

LONDON

LR

© 2020

Lloyd's Register  
Foundation