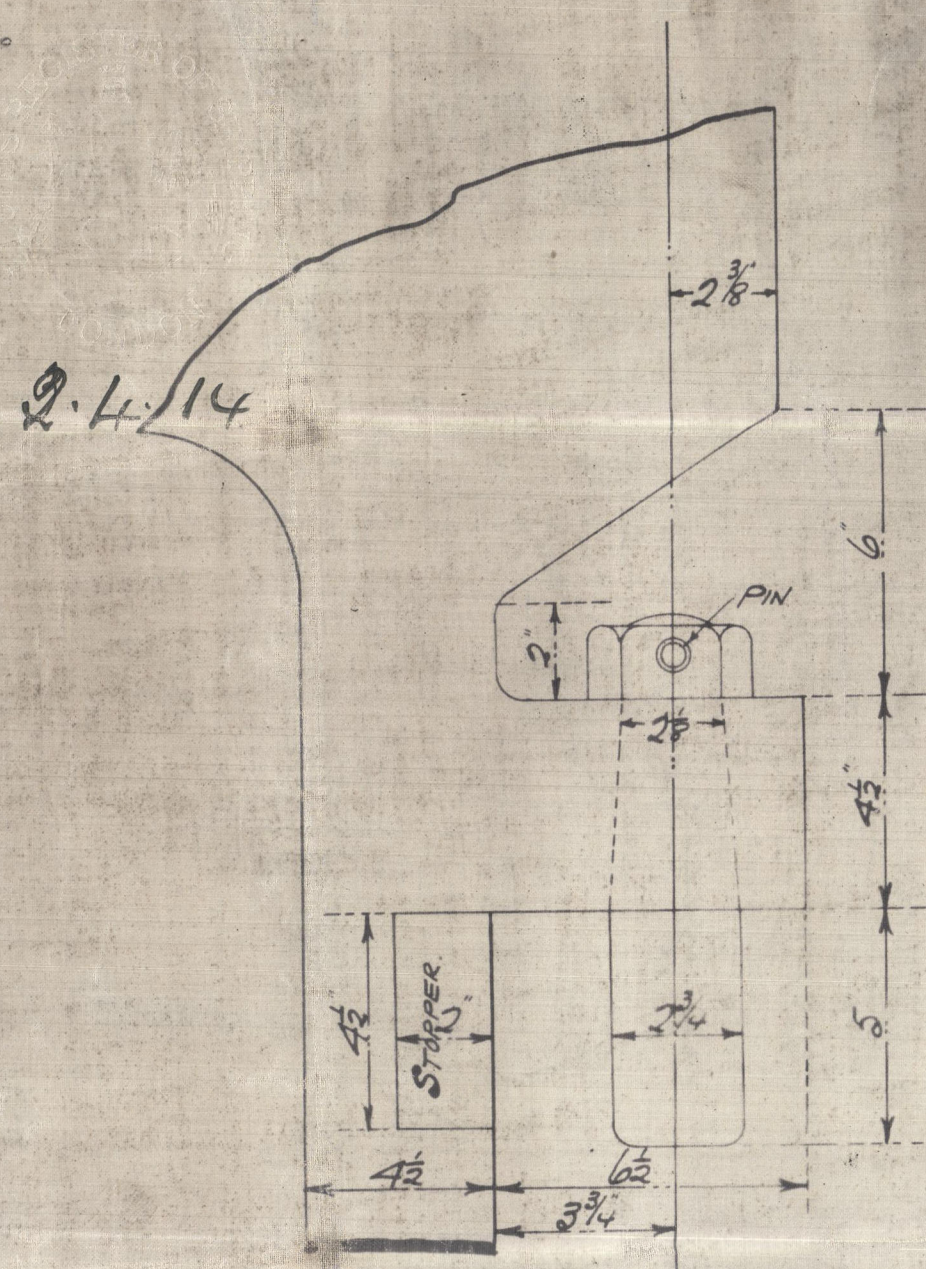


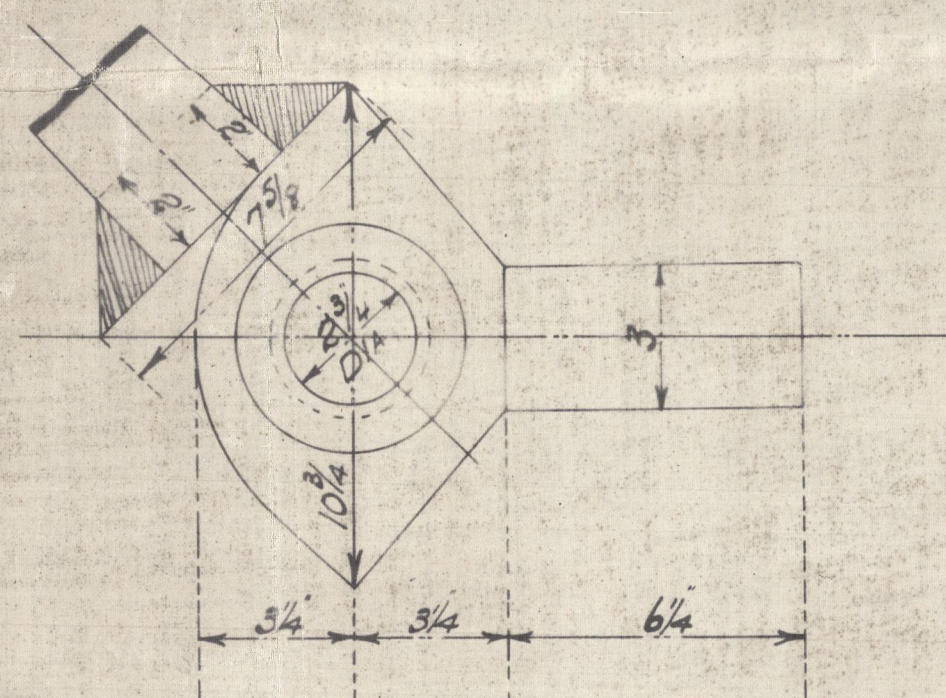
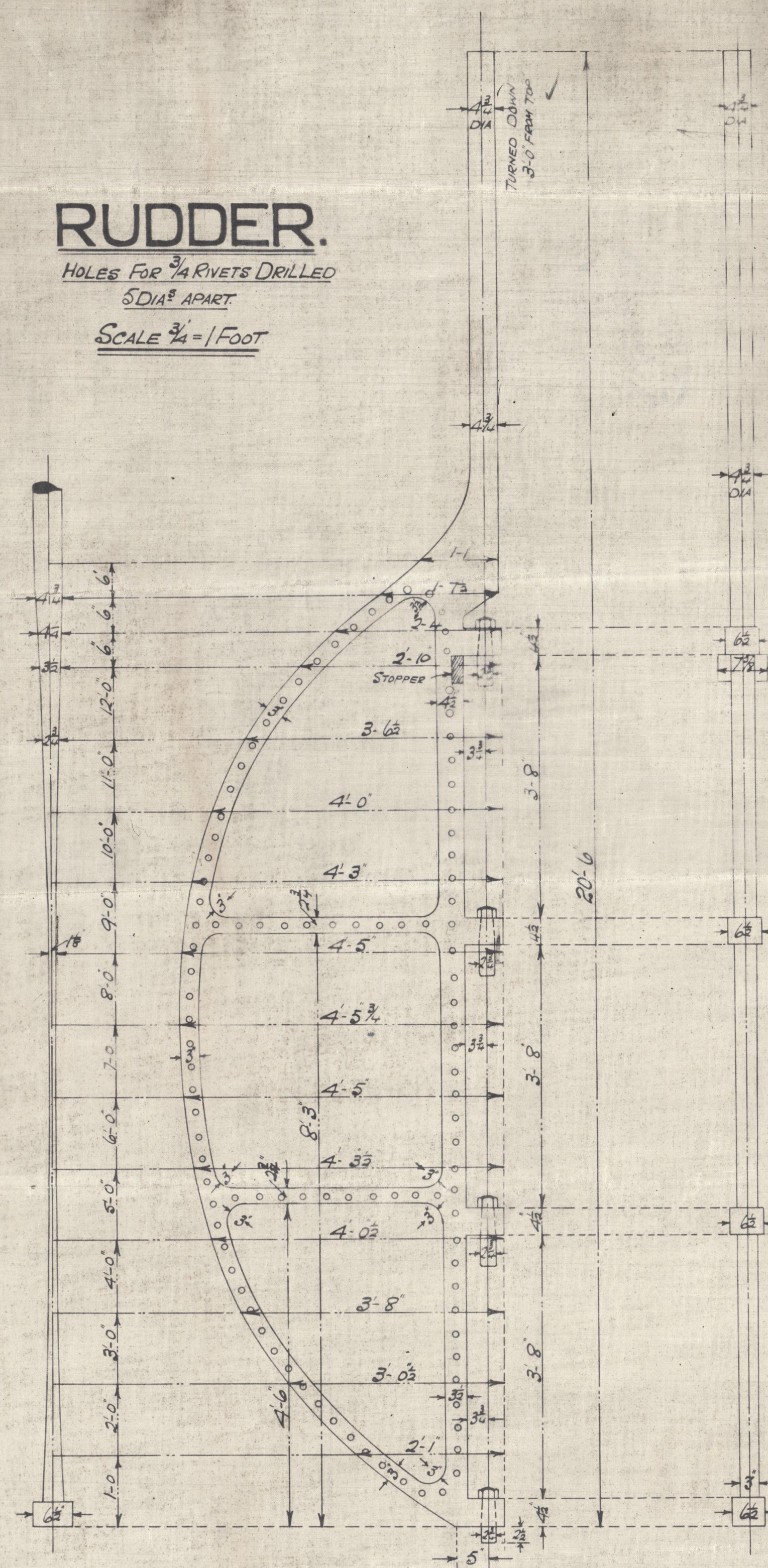
2.4.14



# **RUDDER.**

HOLES FOR 3/4" RIVETS DRILLED  
5 DIA. APART.

SCALE 3/4" = 1 FOOT.



ENLARGED VIEW OF STOPPERS.  
RUDDER TO HEEL OVER TO AN ANGLE OF 45° EXACTLY.

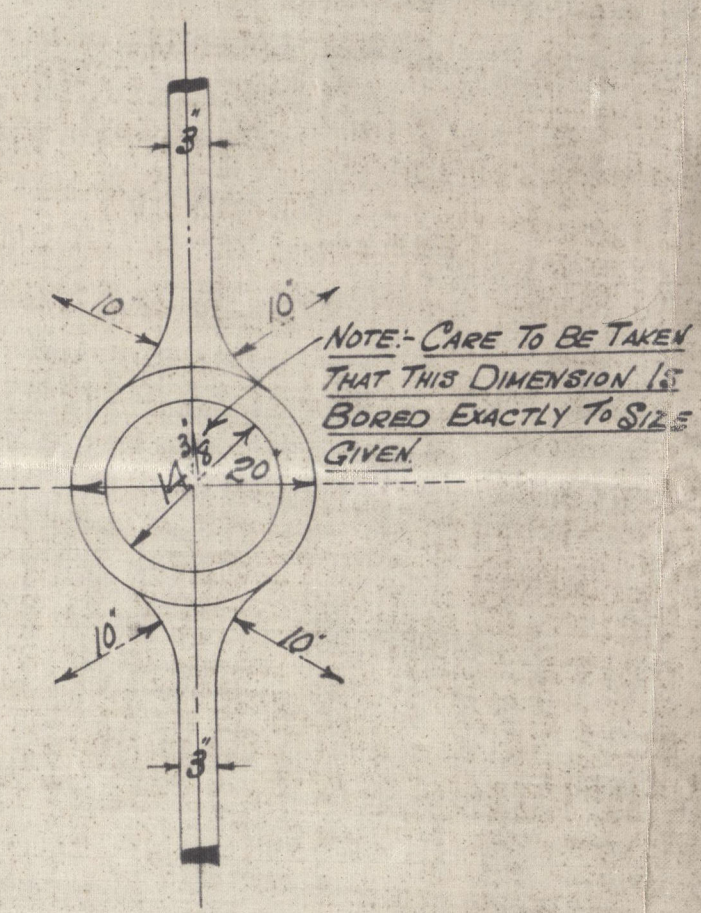
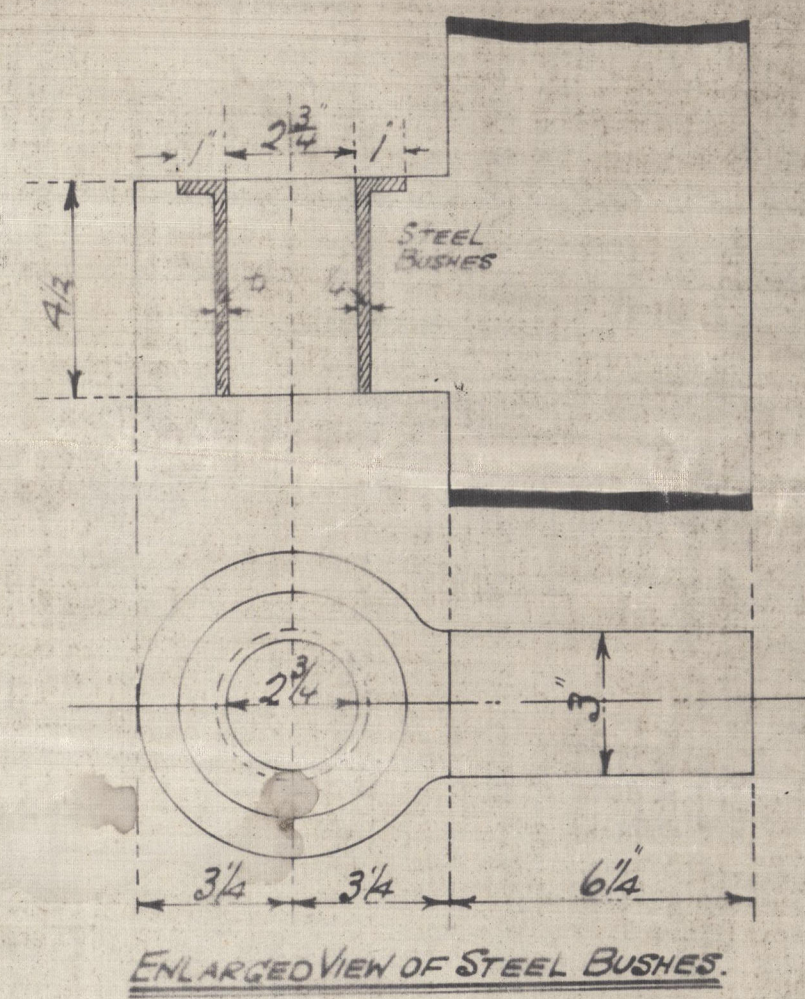
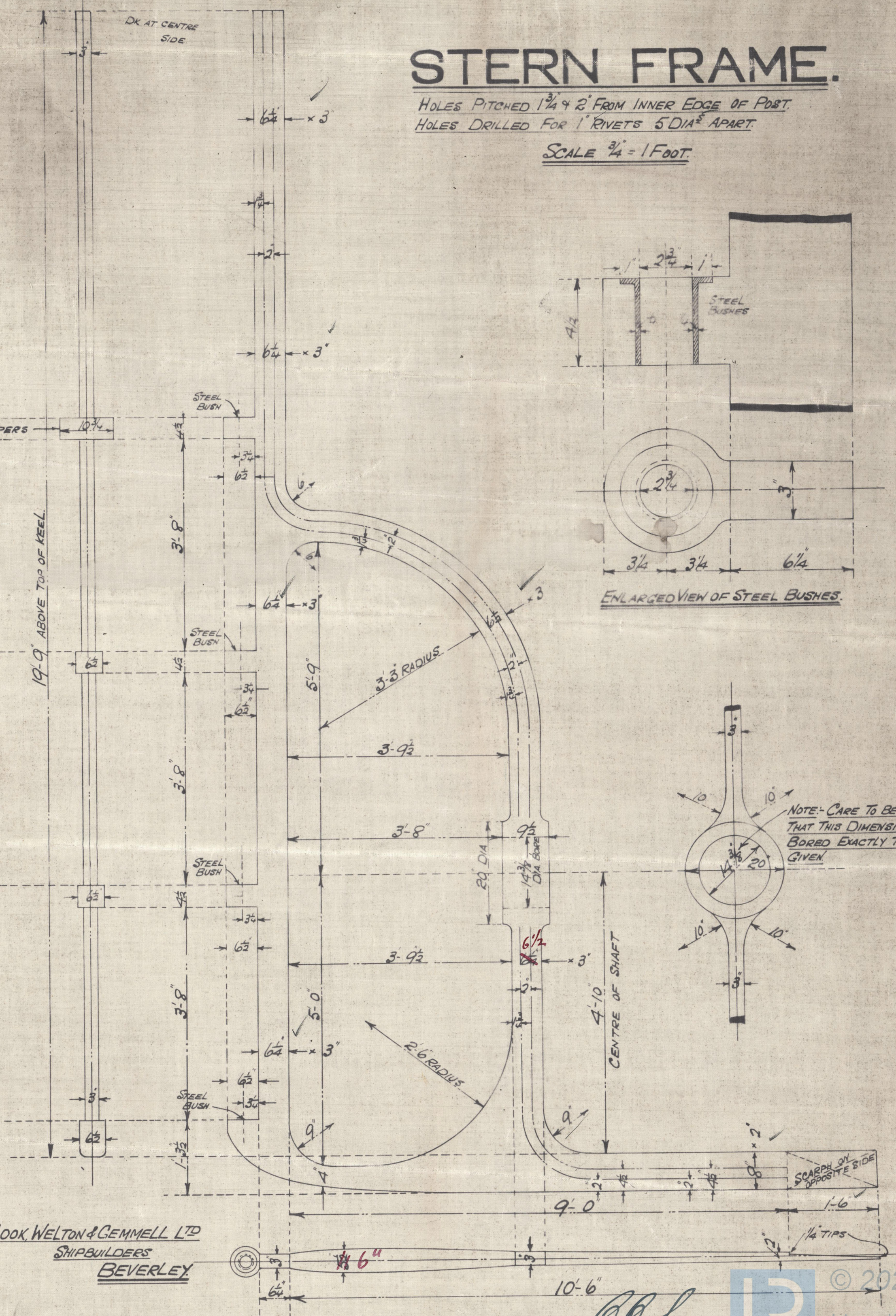
**Nºs 309-10-11 & 15**

COOK, WELTON & GEMMELL LTD  
SHIPBUILDERS  
BEVERLEY

# **STERN FRAME.**

HOLES PITCHED 1 3/4" & 2" FROM INNER EDGE OF POST.  
HOLES DRILLED FOR 1" RIVETS 5 DIA. APART.

SCALE 3/4" = 1 FOOT.





*2*

Cook. hull <sup>Small's</sup> no

309-10-11 + 315

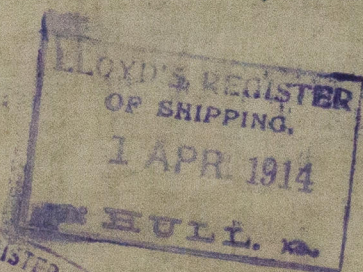
New France & Russia

sp "Sir John French" no 310

Hull Rpt no. 28387  
sp "Lord. Fisher" Hull Rpt. no. 28422

Kopanes

s/s Sir John Jellicoe Hull Rpt. 28510  
- Earl Kitchener - - 28700



V46-0181



© 2020

Lloyd's Register  
Foundation