

LLOYDS
STAMP
24/6/13

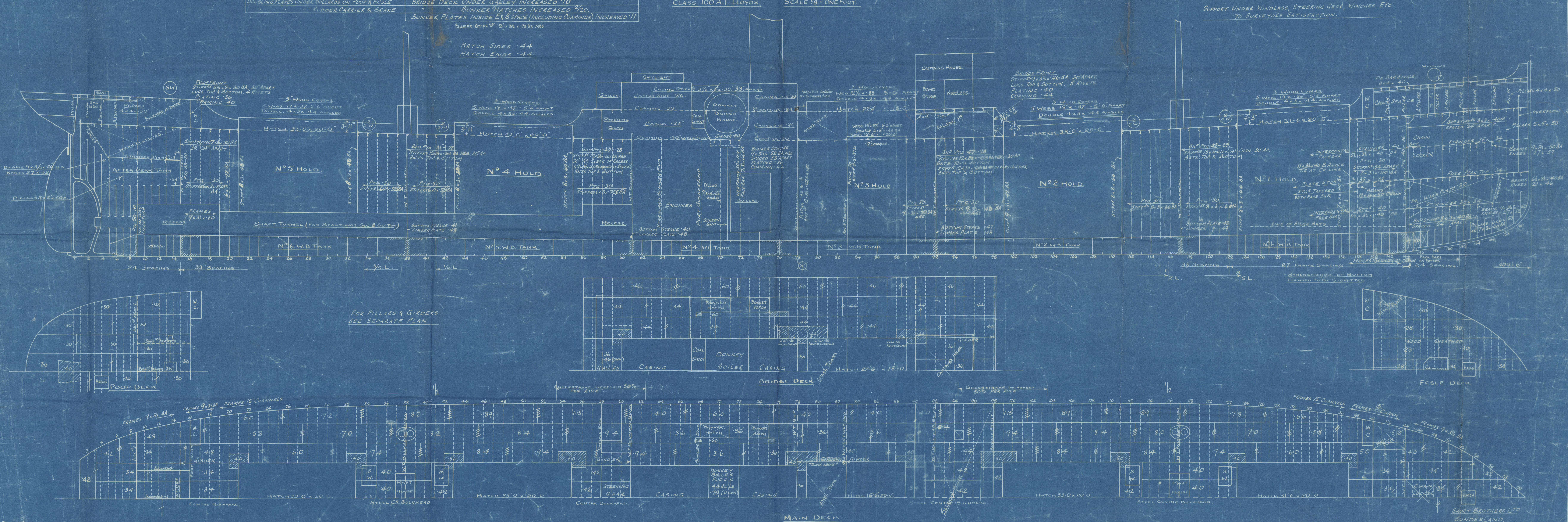
OWNERS INCREASES	
COAL SHOOT SLOPES $\frac{1}{2}$ THICK	TANK TOP, FLOORS, MARGIN PLATES, GIRDERS ETC IN BOILER SPACE
" END RIDS $\frac{1}{2}$ THICK	" 14" OVER LLOYDS, AND IN ENGINE SPACE " 14" OVER LLOYDS (I.E. ALL
CORNER BARS EXTRA HEAVY	STEELWORK IN E&B TANKS BETWEEN E&B BIDS INCREASED.
CASING SIDES IN WAY COAL SHOOT INCREASED $\frac{1}{2}$ THICK	TANK END FLOORS AT FORE & AFTER ENDS OF ENGINE & BOILER R/TANK
CHAIN PIPES $\frac{1}{2}$ THICK	INCREASED " 10", THIS INCREASE TO BE IN ADDITION TO ANY INCREASES
MASTS 27" x 42" AT DECK TO 22" x 36" AT HEAD	ALREADY SPEC' FOR THESE T.E. FLOORS (I.E. ENGINE " 10" & R/T " 20" OVER LLOYDS)
DOUBLING PLATES UNDER BOLLARDS ON POOP & FCSLE	DONKEY BOILER FLOOR TO BE $\frac{1}{2}$ THICK. CORNER ANGLES $\frac{1}{2}$ THICK.
" " " RUDDER CARRIER & BRAKE	BRIDGE DECK UNDER GALLEY INCREASED " 10
	" " " BUNKER HATCHES INCREASED $\frac{1}{2}$ THICK.
	BUNKER PLATES INSIDE E&B SPACE (INCLUDING COAMINGS) INCREASED " 11

PROFILE & DECKS.

$\frac{5}{8}$ BRIGHTON.

DIMENSIONS. LENGTH ON L.W.L. 409'5" x 53'66" B.M.L. x 31'5" D.M.L.
CLASS 100 A.I. LLOYDS. SCALE $\frac{1}{8}$ " = ONE FOOT.

YARD No 428.



PLAN No

SHORT BROTHERS LTD
SUNDERLAND.

Sunderland.

Short Bros Ltd

Profile & dk plan

No. 428

(As Built)

S. S. "BRIGHTON"

old Rpt No 2963 D.

RETAIN
R

W459- 0164

© 2020

Lloyd's Register
Foundation