

RIVETING AS PER RULES.

28/1-24

HATCH CORNERS UPPER DECK HATCH 1/2" x 1"

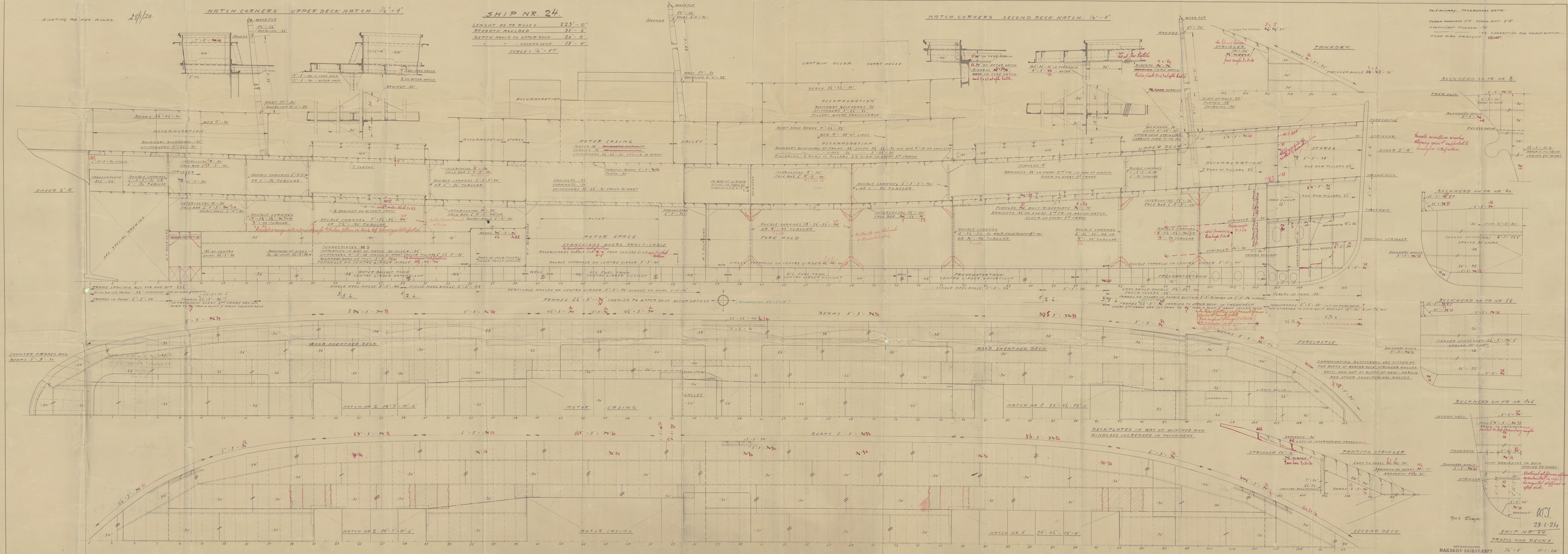
SHIP NR. 24.

LENGTH AS PER RULES 223'-0"
BREADTH MOULDED 35'-6"
DEPTH MOULD TO UPPER DECK 20'-0"
SECOND DECK 13'-0"
SCALE 1/4" = 1'

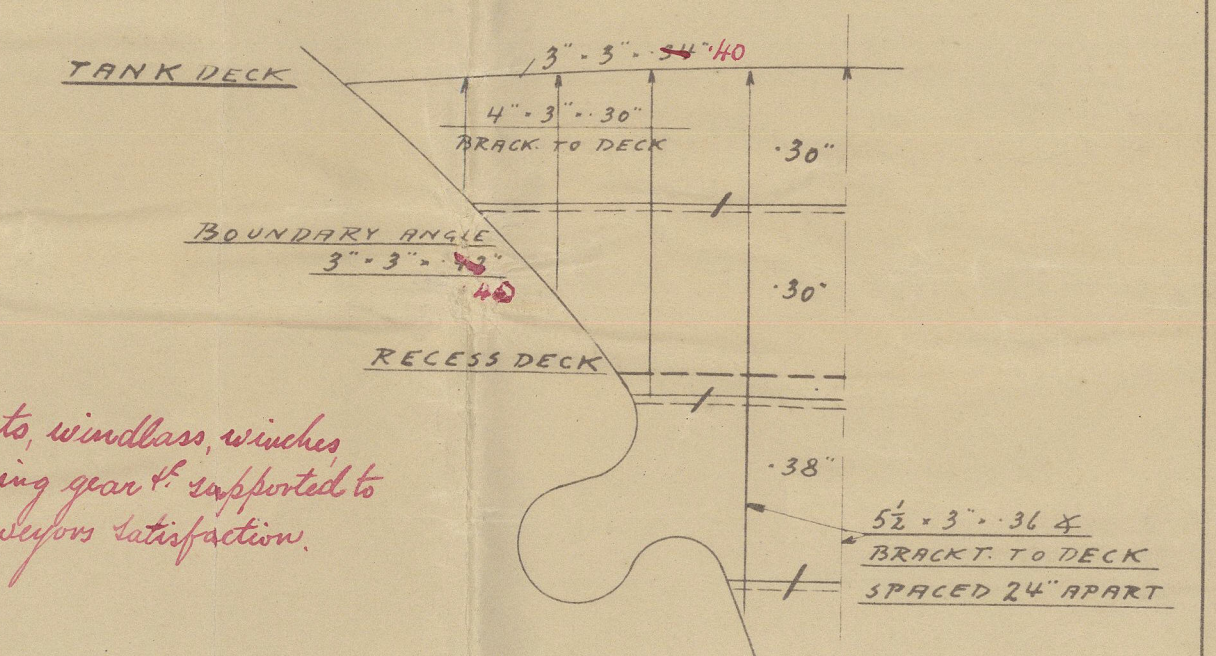
HATCH CORNERS SECOND DECK HATCH 1/2" x 1"

PRELIMINARY, FREEBOARD DATA:

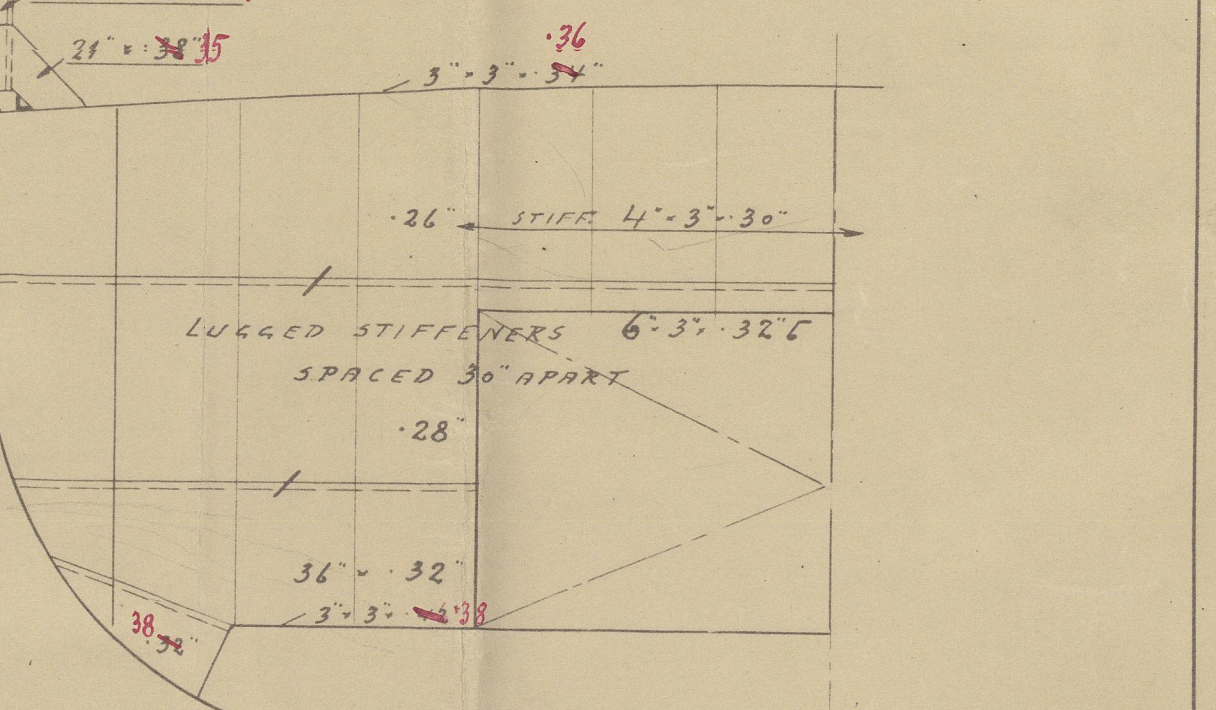
SHEER FORWARD 5'-9" STEEL ART 2'-9"
COEFFICIENT FINESSE .79
CORRECTION FOR DOUBLE BOTTOM .12
FIXED MAX DRAUGHT 12'-4"



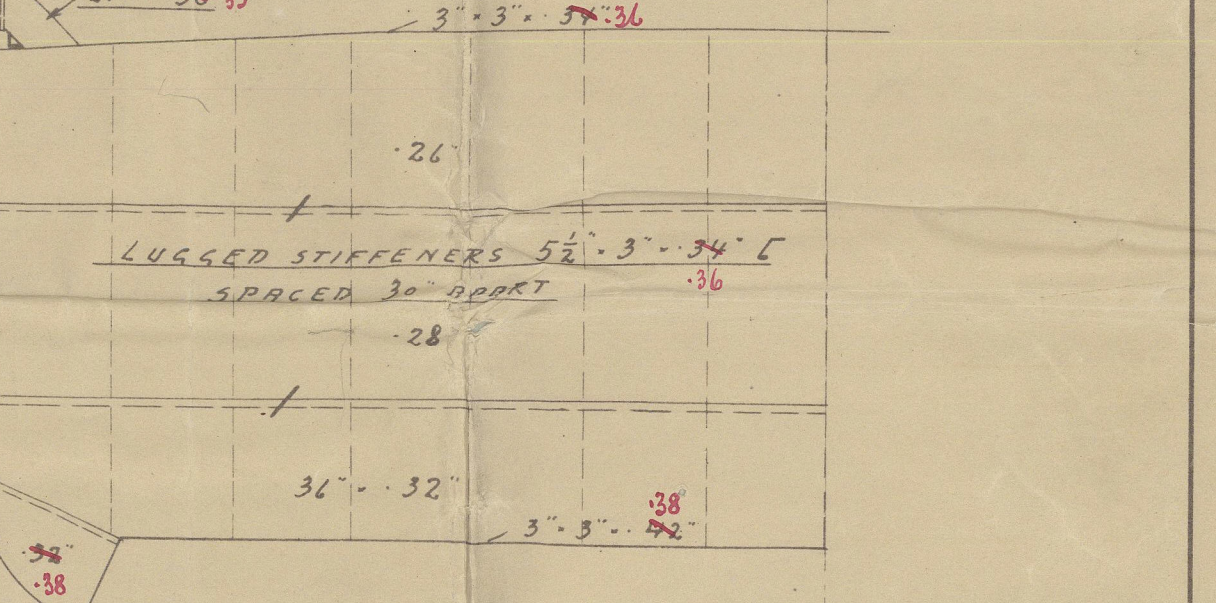
BULKHEAD ON FR. NR. 8



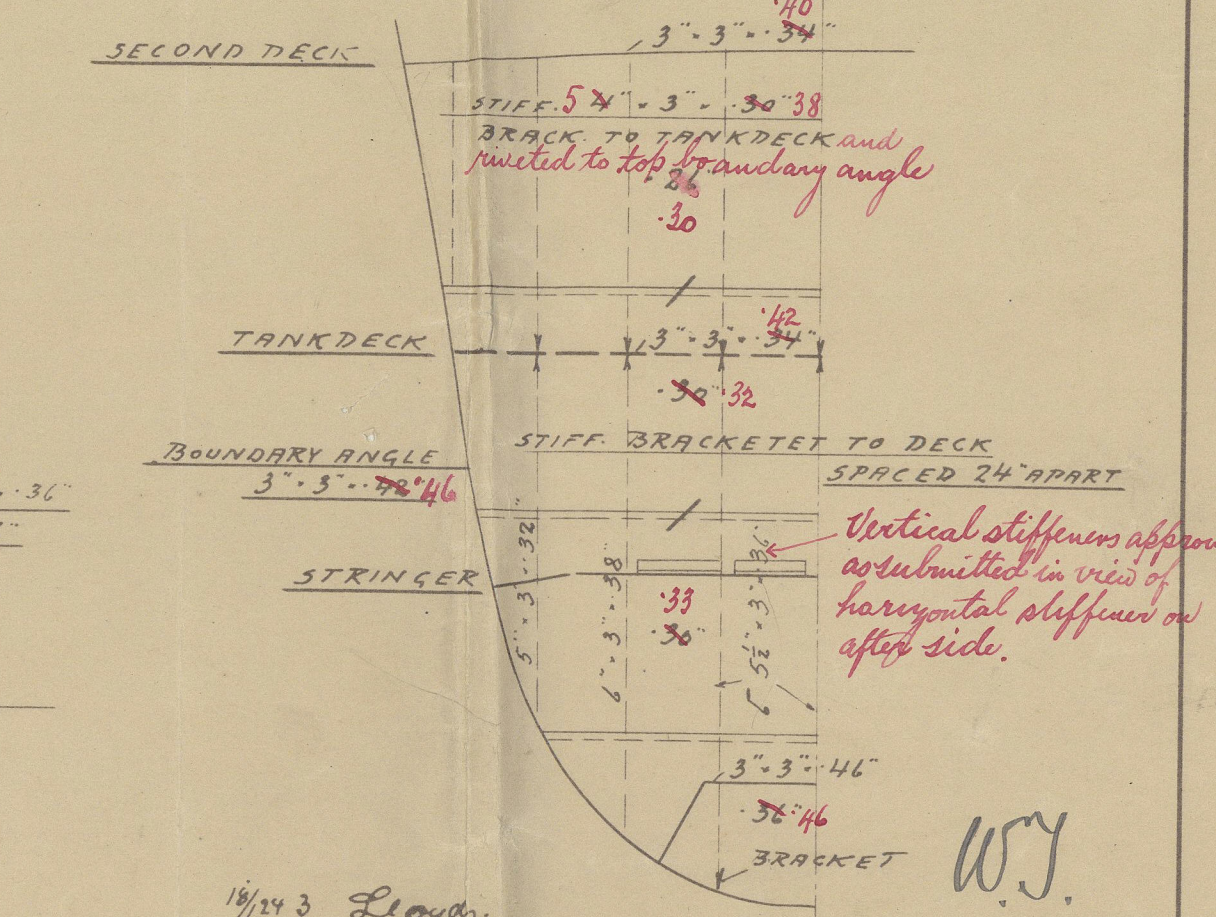
BULKHEAD ON FR. NR. 40



BULKHEAD ON FR. NR. 56



BULKHEAD ON FR. NR. 106



SHIP NR. 24.
PROFIL AND DECKS

AKTIESELSKABET
NAKSKOV SKIBSVÆRFT

1/4" = 1' 15-1-24

28-1-24

28-1-24

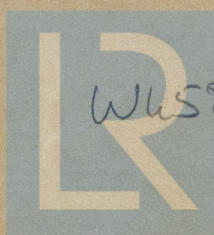
PROFILE & DECK PLANS
NARSKOV SKIBSVERFT
Nº 24



(2)

m/s. Malini
Gym. Rpt. No. 7087.

RETAIN



© 2020

WUS8-0073

Lloyd's Register
Foundation