

PLAN No 3.

SHIP No 316.

PROFILE & DECKS.

DIMENSIONS:- 212'-0" x 32'-6" x 14'-6" TO UPPER DECK.

SCALE 1/8" = 1'-0"

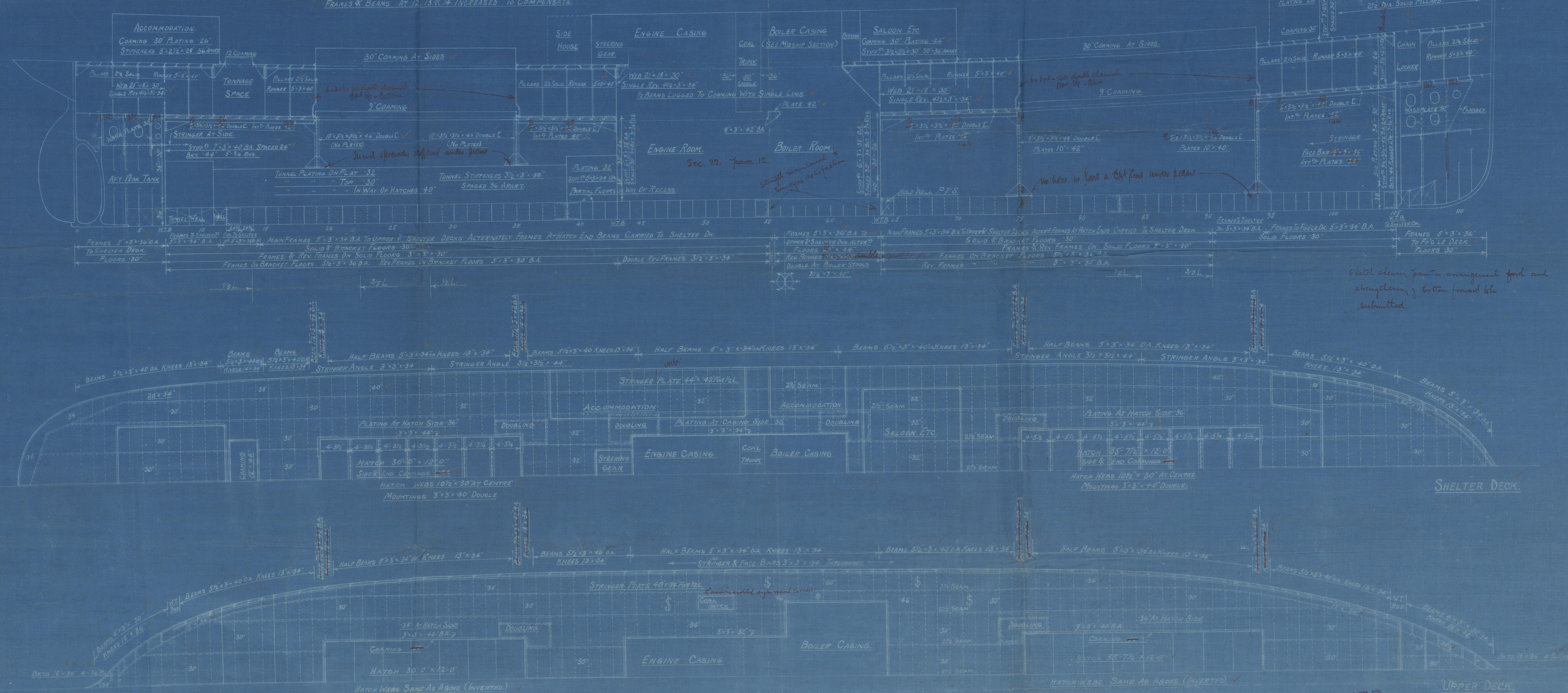
8th  
RA

NOTE: FRAMES SPACED 22 1/2" THROUGHOUT EXCEPT NOS 12-14 WHICH ARE SPACED 24"  
FRAMES & BEAMS AT 12, 13 & 14 INCREASED TO COMPENSATE

TO CLASS 100A.1 (LLOYD'S) Shells & hull (particular)

TYPICAL SKETCH OF PILLARS.

FORECASTLE DECK.



Detail sketch of strengthened hatch coamings and  
hatch end beams for submitted.

Detail sketch of strengthened hatch coamings and  
hatch end beams for submitted.

APPROVED  
LLOYD'S REGISTER OF SHIPPING

M. J. S. S. S.

DATE 12-9-19



Ardrasan Co's  
No. 316.

Profile.

~~Canceled~~

S.S. Langford.

GLASGOW REPORT No. 41522

RETAIN



© 2020

Lloyd's Register  
Foundation

W457-0199