

10.10.13  
20.10.13 (No 807)

PROFILE SHEWING:- AMENDED HATCHWAYS,  
" CROSS PLATING & THRO. BEAMS  
IN ENG. & BOILER SPACE, & BEAMS IN WAY OF WORKSHOP  
AMENDED POSITION OF WEB FRAME IN E. & B. SPACE.

S. S. No 506. 1507

385'0" B.P. x 55'3" EXT. x 26'0 3/4 MLD.

SCALE 1/8" = 1'00"

AFTER MAIN HATCH SHELTER DECK 25'6" x 30'0"  
SIDE COAMINGS .50, END COAMINGS .40  
4 HATCH WEBS ABOUT 5'1" APART 30'0" x 25'6" x .44 .52  
2 - 5'3" x .44 ANGLES ON UPPER & LOWER EDGES  
BRACKETS ON WEBS, OR WEBS INCREASED 3"  
6'6" x .50 AT SIDES  
6'6" x .40 - ENDS  
7 BEAMS  
6'3 1/2" x .46  
6" FLANGE

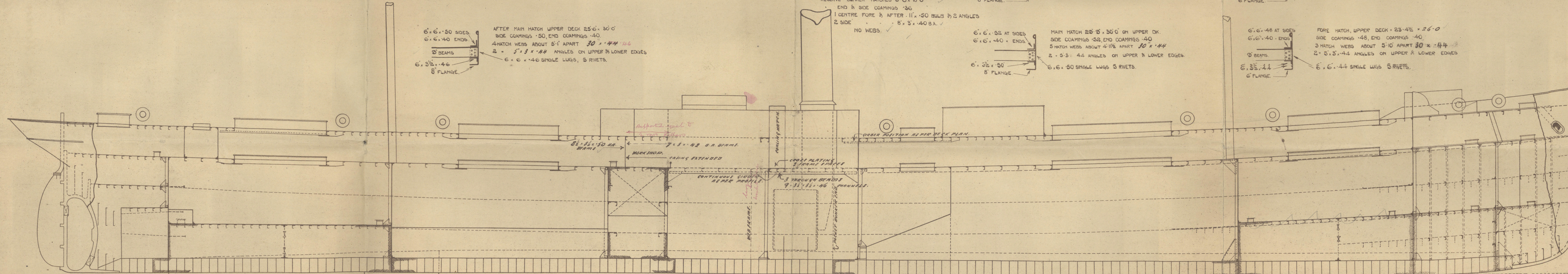
AFTER MAIN HATCH UPPER DECK 25'6" x 30'0"  
SIDE COAMINGS .50, END COAMINGS .40  
4 HATCH WEBS ABOUT 5'1" APART 30'0" x 25'6" x .44 .52  
2 - 5'3" x .44 ANGLES ON UPPER & LOWER EDGES  
6'6" x .46 SINGLE LUGS, 5 RIVETS.  
6'6" x .50 SIDES  
6'6" x .40 ENDS  
7 BEAMS  
6'3 1/2" x .46  
6" FLANGE

MAIN HATCH, SHELTER DECK 25'3" x 30'0"  
SIDE COAMINGS .52, END COAMINGS .40  
5 HATCH WEBS ABOUT 4'11 1/2" APART 30'0" x 25'3" x .44 .48  
2 - 5'3" x .44 ANGLES ON UPPER & LOWER EDGES  
BRACKETS ON WEBS OR WEBS INCREASED 3"  
6'6" x .52 AT SIDES  
6'6" x .40 - ENDS  
6'3 1/2" x .50  
6" FLANGE

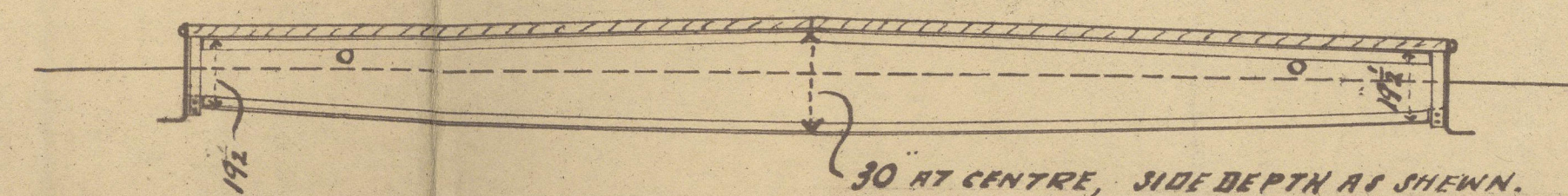
MAIN HATCH 25'3" x 30'0" ON UPPER DK.  
SIDE COAMINGS .52, END COAMINGS .40  
5 HATCH WEBS ABOUT 4'11 1/2" APART 30'0" x 25'3" x .44  
2 - 5'3" x .44 ANGLES ON UPPER & LOWER EDGES  
6'6" x .50 SINGLE LUGS 5 RIVETS.  
6'6" x .52 AT SIDES  
6'6" x .40 - ENDS  
6'3 1/2" x .50  
6" FLANGE

FORE HATCH, SHELTER DECK 23'4 1/2" x 24'0"  
SIDE COAMINGS .48, END COAMINGS .40  
3 HATCH WEBS ABOUT 5'10" APART 30'0" x 23'4 1/2" x .40 .48  
2 - 5'3" x .40 ANGLES ON UPPER & LOWER EDGES  
BRACKETS ON WEBS, OR WEBS INCREASED 3"  
6'6" x .48 AT SIDES  
6'6" x .40 - ENDS  
7 BEAMS  
6'3 1/2" x .44  
6" FLANGE

FORE HATCH, UPPER DECK 23'4 1/2" x 26'0"  
SIDE COAMINGS .48, END COAMINGS .40  
3 HATCH WEBS ABOUT 5'10" APART 30'0" x 23'4 1/2" x .44 .48  
2 - 5'3" x .44 ANGLES ON UPPER & LOWER EDGES  
6'6" x .44 SINGLE LUGS 5 RIVETS.  
6'6" x .48 AT SIDES  
6'6" x .40 - ENDS  
9 BEAMS  
6'3 1/2" x .44  
6" FLANGE



SKETCH SHEWING UPPER DK. HATCH WEBS.



6446  
506  
6.10.13

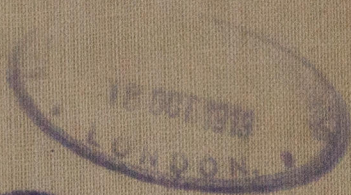
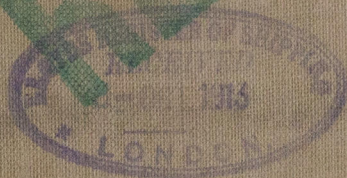




Sketch of Profile  
showing  
enlarged hatchways  
tc

S.S. No. 506 <sup>ny</sup>

J. L. Thompson & Co.



W455-0138

506 S.S. Boden

Std Rpt. No 26116

507

S.S.

NARYIK

Std Rpt. No 26161

© 2020  
Lloyd's Register  
Foundation