

- N° 551. - MIDSHIP SECTION

NUMERALS
 BREADTH MLD = 53.75
 DEPTH MLD = 29.00
 LENGTH B.P. = 82.75 TRANS N°
 420
 34755 = LONGT N°
 SHELTER 420'8"75 = 2520
 HOUSES CASINGS ETC = 312
 37587 = EQUIPMENT N°
 PL (1) = 14.48
 PL (3) = 11.35
 a = 25.62

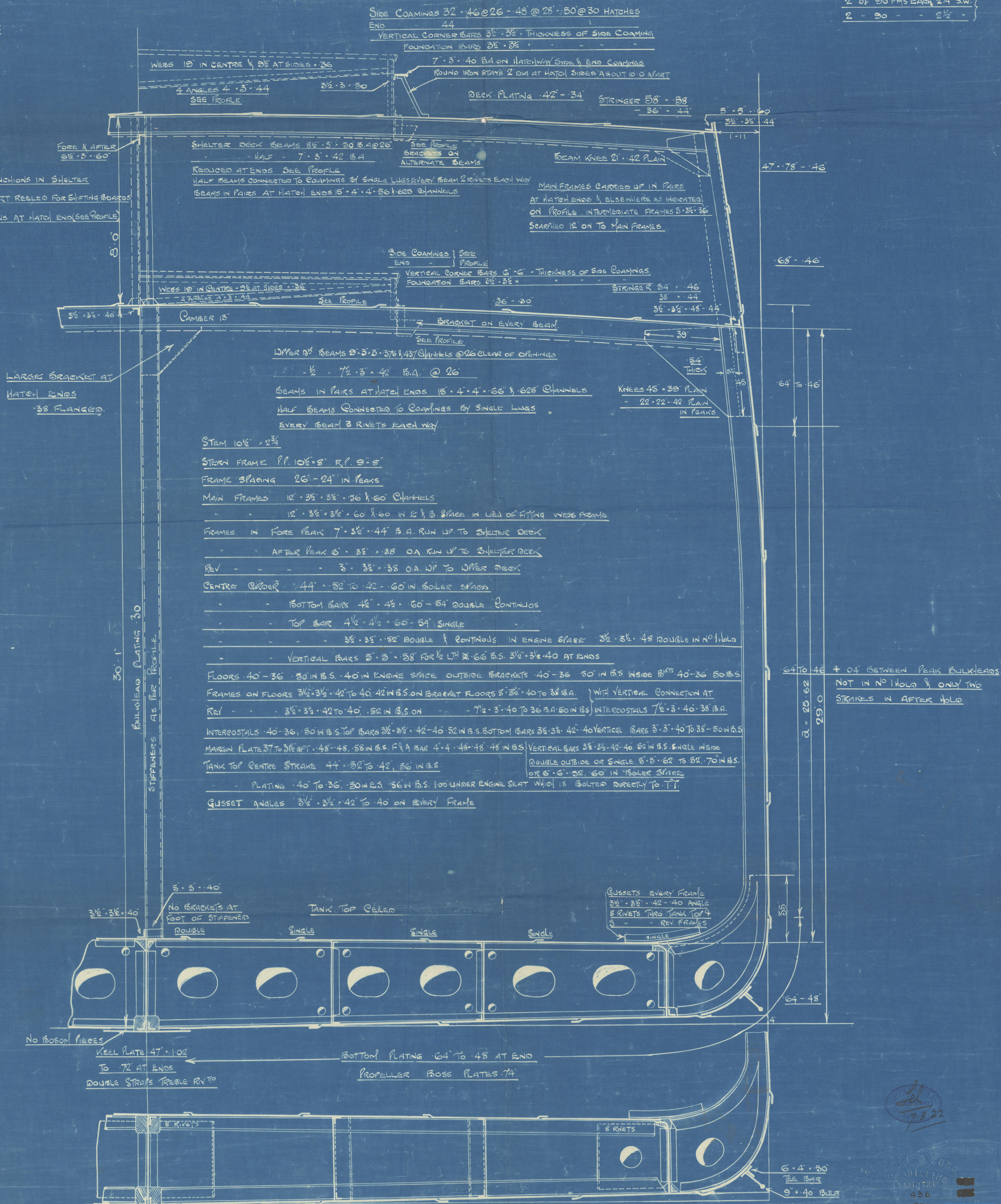
420-0 B.P. 53.9 MLD 29.0 MLD

TO CLASS 100. A.I. LLOYDS.

SCALE $\frac{1}{2}$ = 1 FOOT.

EQUIPMENT

3 BOWERS STOCKLESS COLLECTIVE WEIGHT 182 CWT
 1 STREAM ANCHOR 17½ CWTs EX STOCK
 1 KEDGE 7½ CWT EX STOCK
 270 FMS 2 1/16 STD-CHAIN CABLE
 90 FMS 4 3/4 S.W. ROPE
 120 - 5' S.W. ROPE
 2 OF 90 FMS EACH 2 3/4 S.W.
 2 - 90 - - 2 1/2 -



W. & A. R. & SONS
 ENGINEERING
 436
 551
 22-2-22



© 2020 Lloyd's Register Foundation

SUNDERLAND

Messrs W^m DUNFORD & SONS L^{td}

MIDSHIP SECTION

(AS BUILT)

No 551

P. S. "BLYTHMOOT"

SUNDERLAND RPT. NO. 28299.

W454-0066



© 2020

Lloyd's Register
Foundation