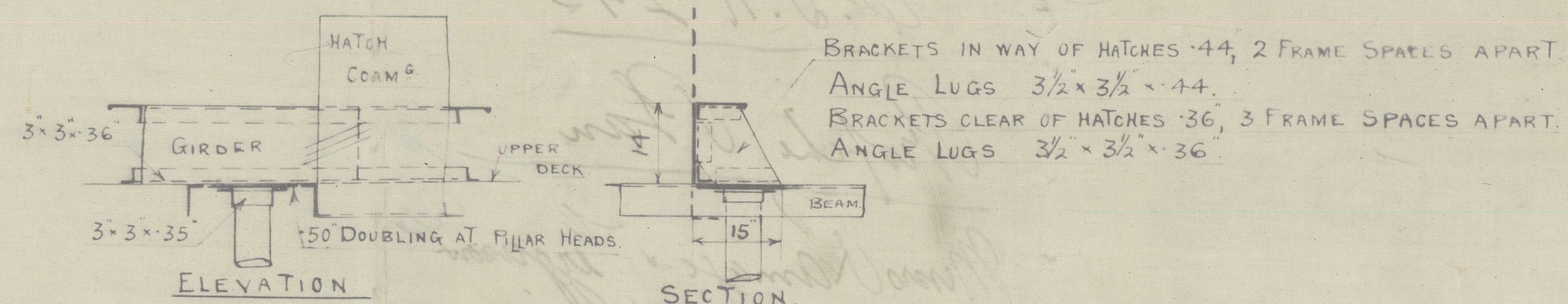
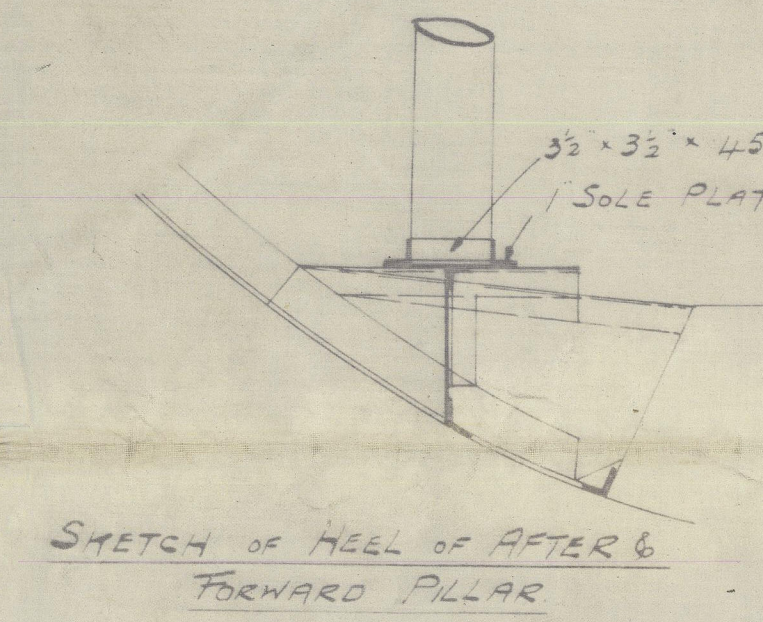
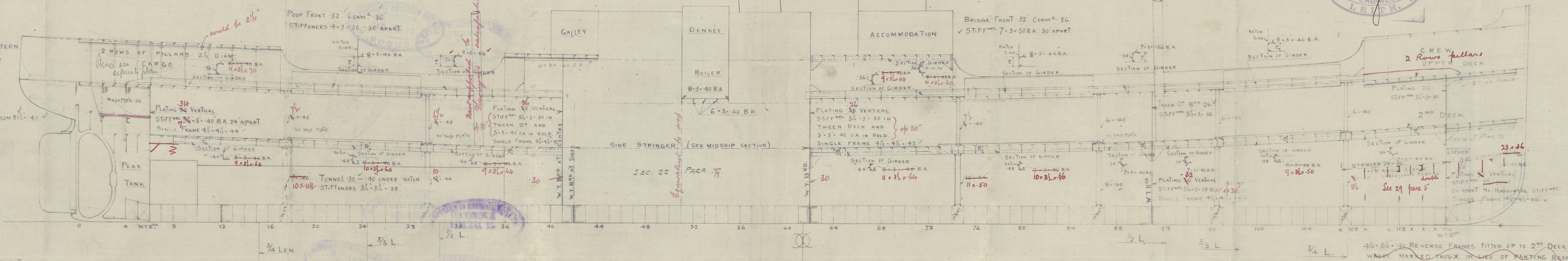
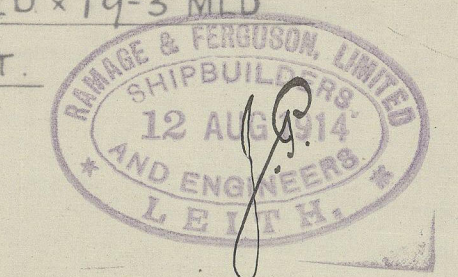


17.8.14.  
28.8.14  
31.8.14  
3.9.14.  
19.10.14  
12.1.15  
12.3.15  
22.1.17  
3-4-17



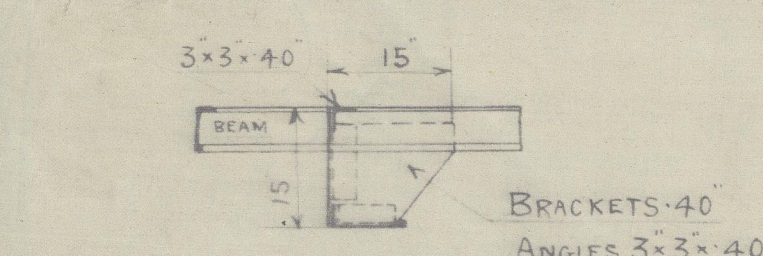
N<sup>o</sup> 243  
PROFILE  
STEEL SCREW STEAMER  
TO CLASS 100 A.I. LLOYDS  
DIMS:- 236'-0" BP - 36'-3" MLD - 19'-3" MLD  
SCALE 1/8" = 1 FOOT.



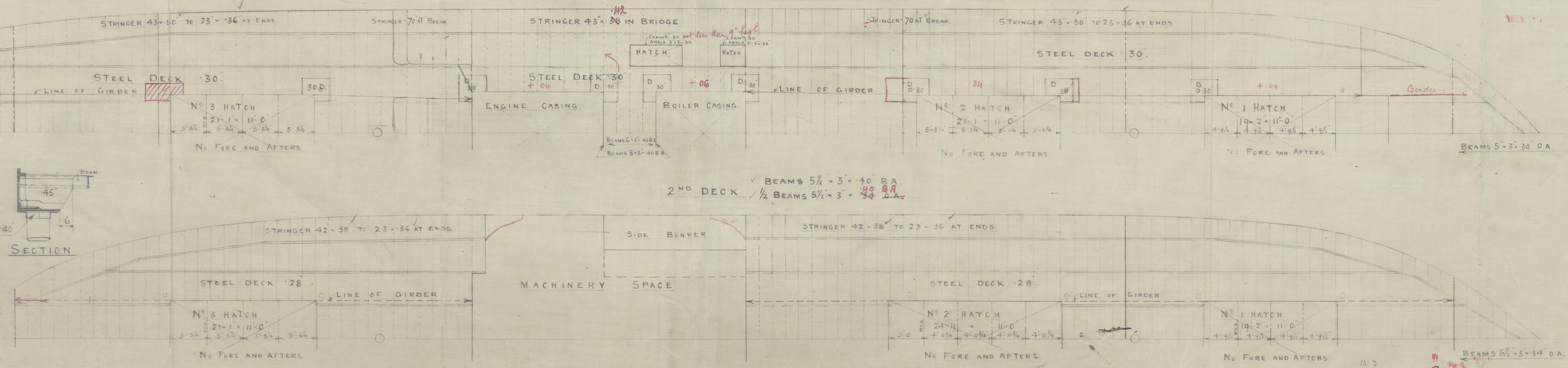
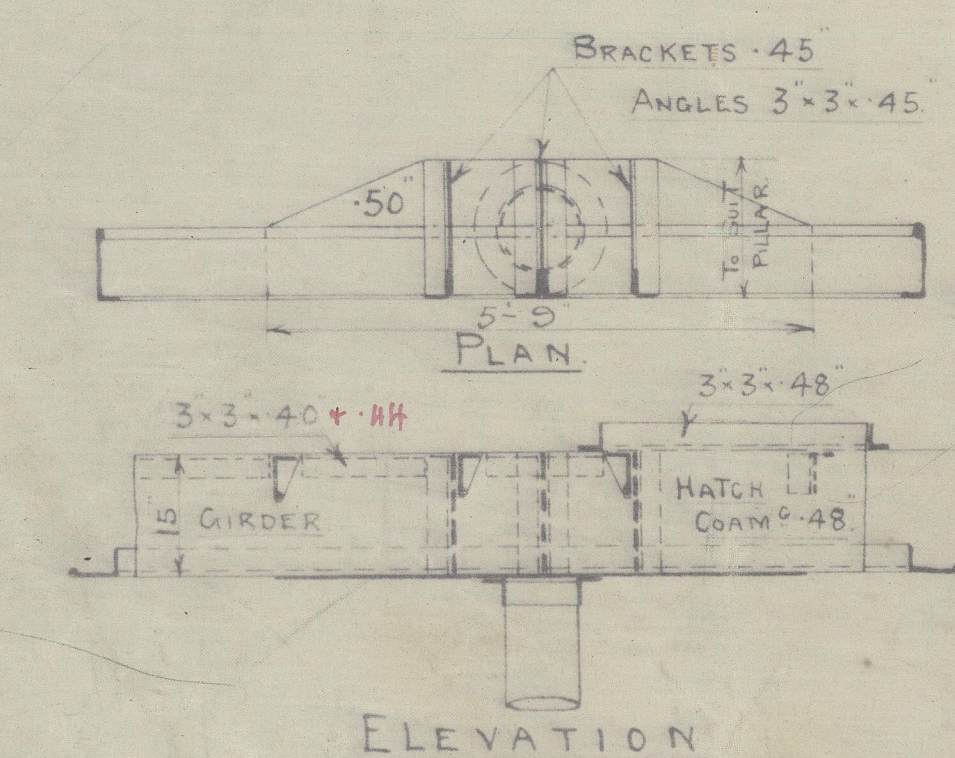
SKETCH SHOWING FINISH OF 2<sup>ND</sup> DECK GIRDER AT FRAME 8

NOTE:-  
✓ RIVETS IN THE PLATING AND FRAMES IN WAY OF BOTTOM FORWARD  
✓ OF 3/5 L ARE TO BE SPACED NOT MORE THAN 5 1/2 DIAMS APART  
✓ AN ADDITIONAL INTERCOSTAL SIDE GIRDER ONE HALF THE DEPTH  
✓ OF CENTRE GIRDER IS TO BE FITTED FROM 3/5 L TO AS FAR FORWARD  
✓ AS PRACTICAL  
✓ FRAMES DOUBLED FROM 3/5 L TO COLLISION BULKHEAD FROM  
✓ MARGIN PLATE TO MARGIN PLATE OF DOUBLE BOTTOM  
✓ THREE STRAKES OF OUTSIDE PLATING NEXT THE KEEL ARE TO HAVE  
✓ THE MIDSHIP THICKNESS MAINTAINED TO COLLISION BULKHEAD  
✓ TUBULAR PILLARS OF STEEL OF TENSILE STRENGTH OF FROM 28-32 TONS  
✓ PER SQUARE INCH

4x3x36 REVERSE FRAMES FITTED UP TO 2<sup>ND</sup> DECK.  
WAS MARKED THUS IN LIES OF PAINTING BEAMS  
Sketch of painting arrangements to be submitted.



BRACKETS TO GIRDERS UNDER 2<sup>ND</sup> DECK  
SPACED 3 FRAME SPACES APART.  
✓ 2 FRAME SPACES APART IN WAY OF HATCHES  
SCALE 1/2" = 1 FOOT.



C.B.  
17.8.14.



S. S. N<sup>o</sup> 243

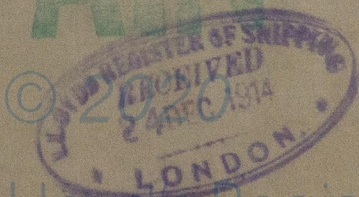
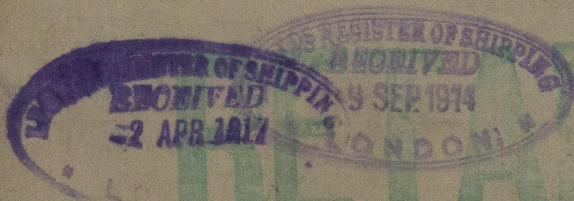
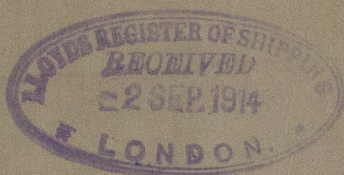
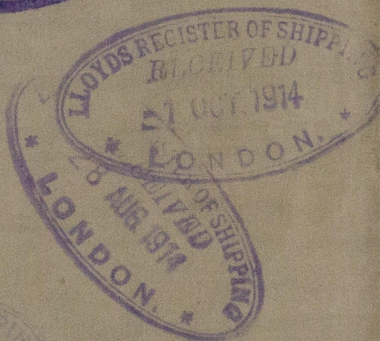
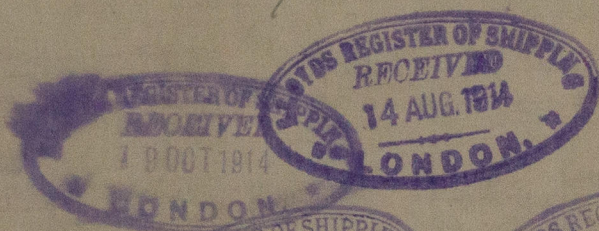
Profche Plan

Messrs Ramage & Ferguson<sup>Lea</sup>  
Lth

S's Darins

Lth. 15

15270



W452-0148

Lloyd's Register  
Foundation