

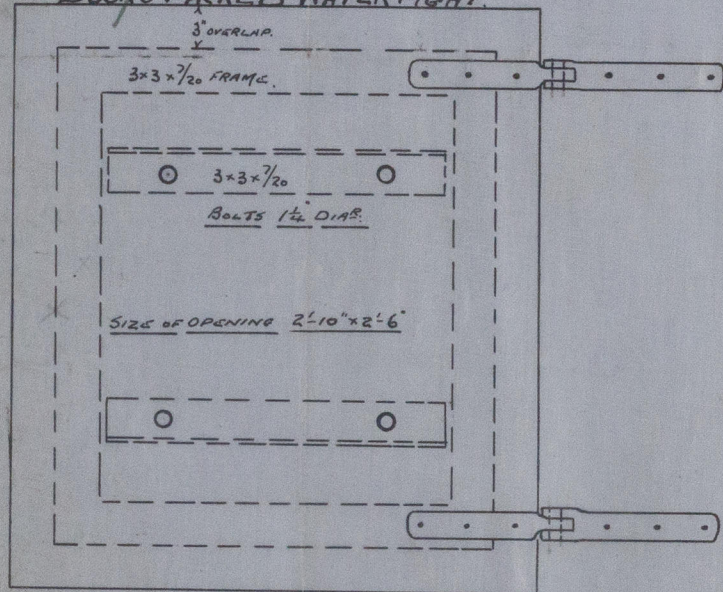
PLAN OF BULKHEAD CARGO DOORS. (WATERTIGHT)

S. S. No. 83.

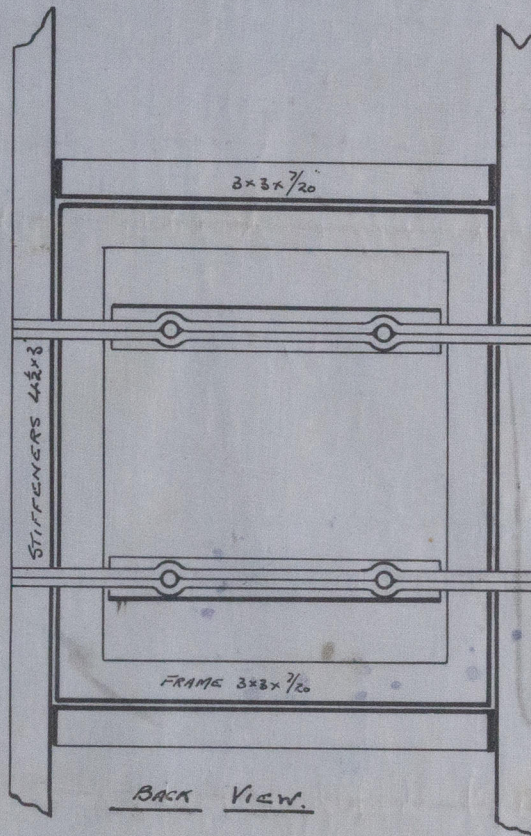
SCALE 1 INCH LONG FOOT.

22.11.07

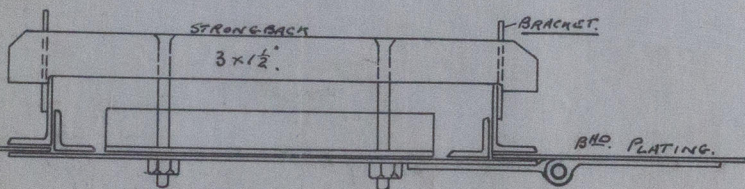
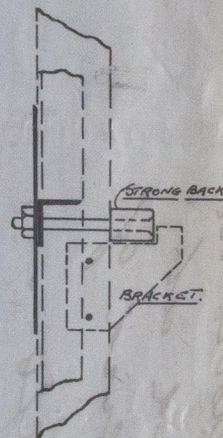
DOORS PACKED WATERTIGHT.



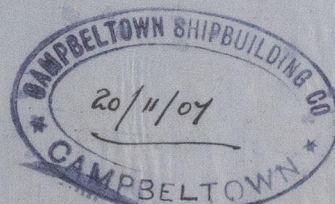
FRONT VIEW.



BACK VIEW.



SECTION.



G.R.M.
22-11-07



© 2019

Lloyd's Register Foundation

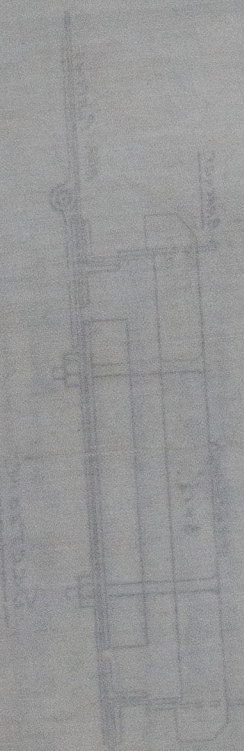
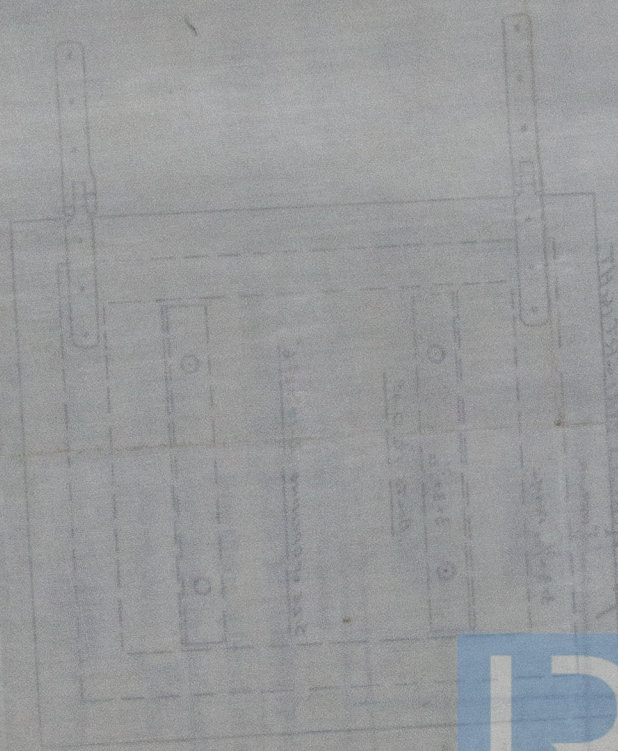
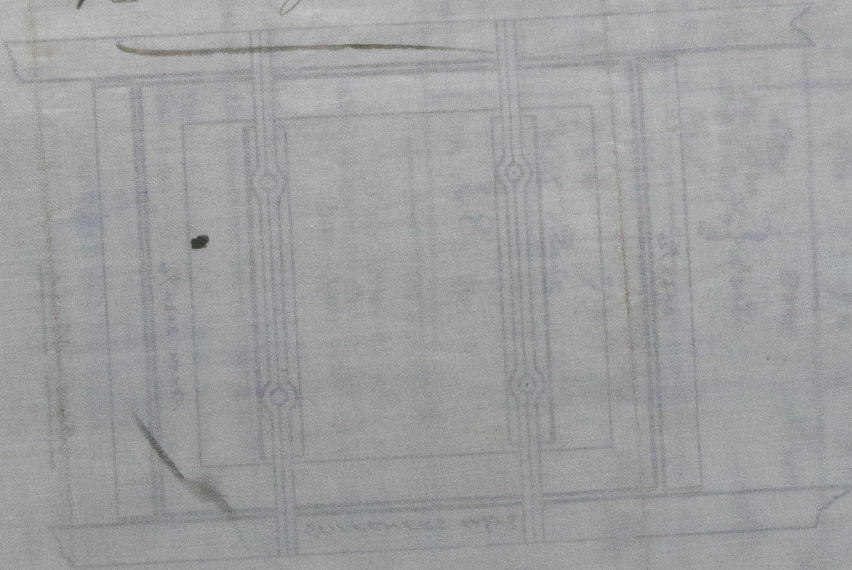
W451-0139

Is the fore-castle at least as high as the main deck? Are the Engine and Boiler openings covered by a Bridge, Poop, Raised Quarter Deck, or enclosed by a Strong Iron or Steel Deckhouse? If the openings are not so protected are the exposed parts of the Casings efficiently constructed?

Covered by a Poop

Messrs. Campbellton & Co. B. C. No. 83

Plan of doors in bulkhead at after end of Bridge



© 2019

Lloyd's Register Foundation



Part of the original drawing is missing. The drawing is a plan of a door in a bulkhead at the after end of a bridge. The drawing is oriented horizontally on the page. The drawing is a plan of a door in a bulkhead at the after end of a bridge. The drawing is oriented horizontally on the page. The drawing is a plan of a door in a bulkhead at the after end of a bridge. The drawing is oriented horizontally on the page.