

18/3/1919

MIDSHIP SECTION

S.S. No 509 482' x 58' x 35'4" KEEL TO UPPER DK.

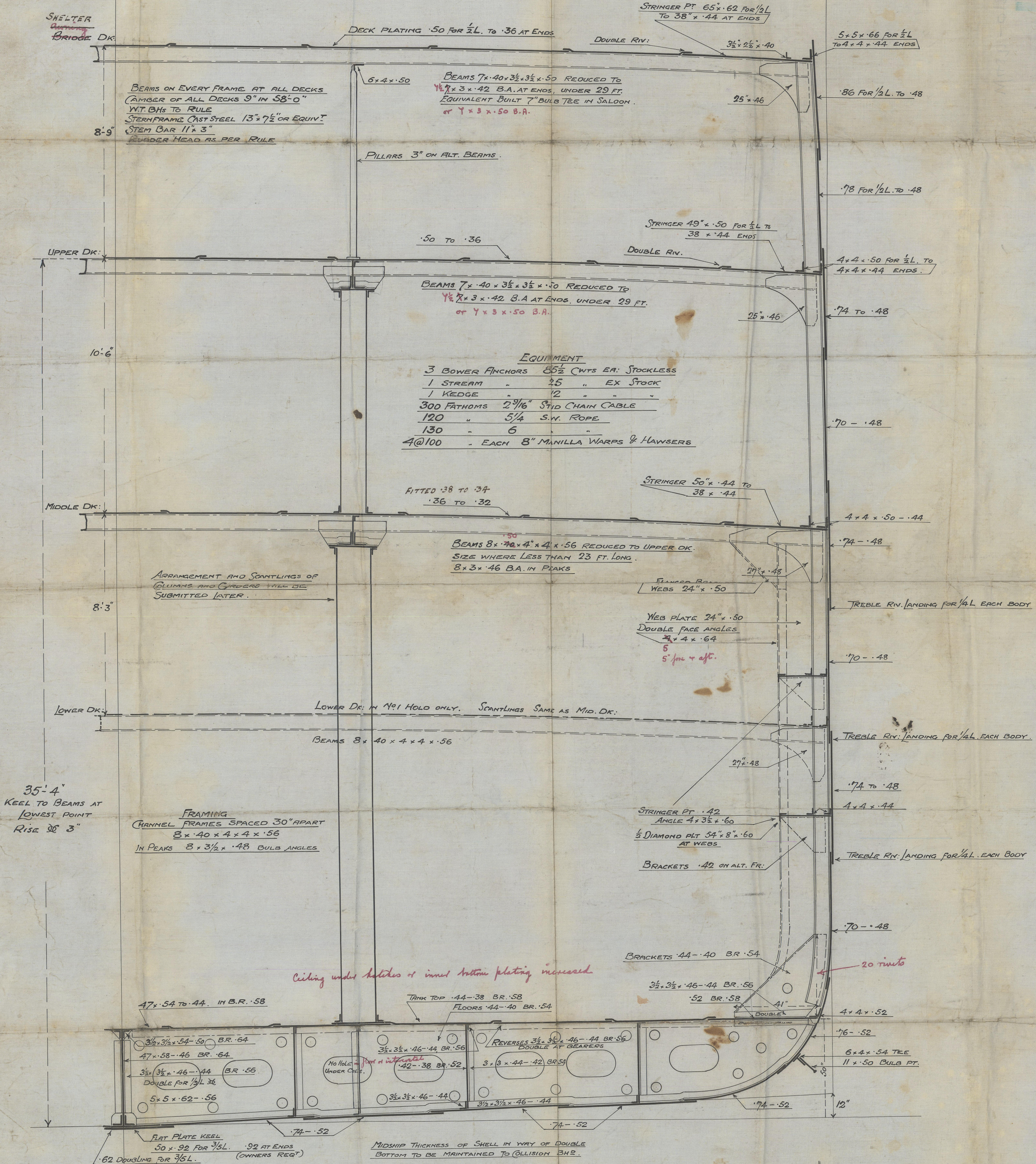
SCALE 1/2" = 1 FOOT

22.12.16 1.11.16
TO CLASS AT LLOYDS 100 A1

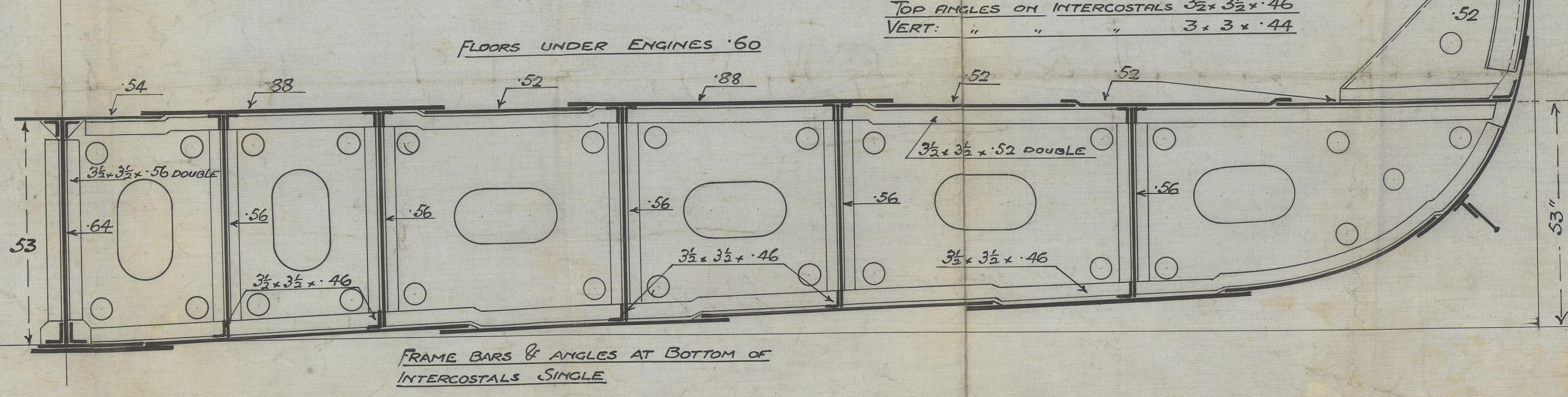
NUMERALS
58 + 35.58 = 93.58
93.58 x 482 = 45105
d = 20.17 TO MID. DK.

EQUIPMENT
L x (B + D) 45105
FOOT BR. Y FC. 3281
ON D° D° 1034
ON BOAT DK. Y ABOVE 1060
50480

PROPORTIONS
DEPTHS TO LENGTH: 11.06
BREADTHS 8.31



SECTION IN WAY OF ENGINES



bb/
1. 11. 16.



Harland & Wolff Ltd.

Nº 509.

Midship Section

W450-0131



Lloyd's Register
Foundation