

SUNDERLAND ENGINE WORKS

BOILER

TRACING 2537 SCALE - 1-INCH TO A FOOT - SCHEDULE L.

WRITTEN DIMENSIONS ONLY TO BE TAKEN

APPROVED BY LLOYD'S



4/6/08

RIVET HOLES 1 1/2" DIA.

PLATE 1 1/2" THICK
RIVET HOLES 1 1/2" DIA.
PITCH = 9"

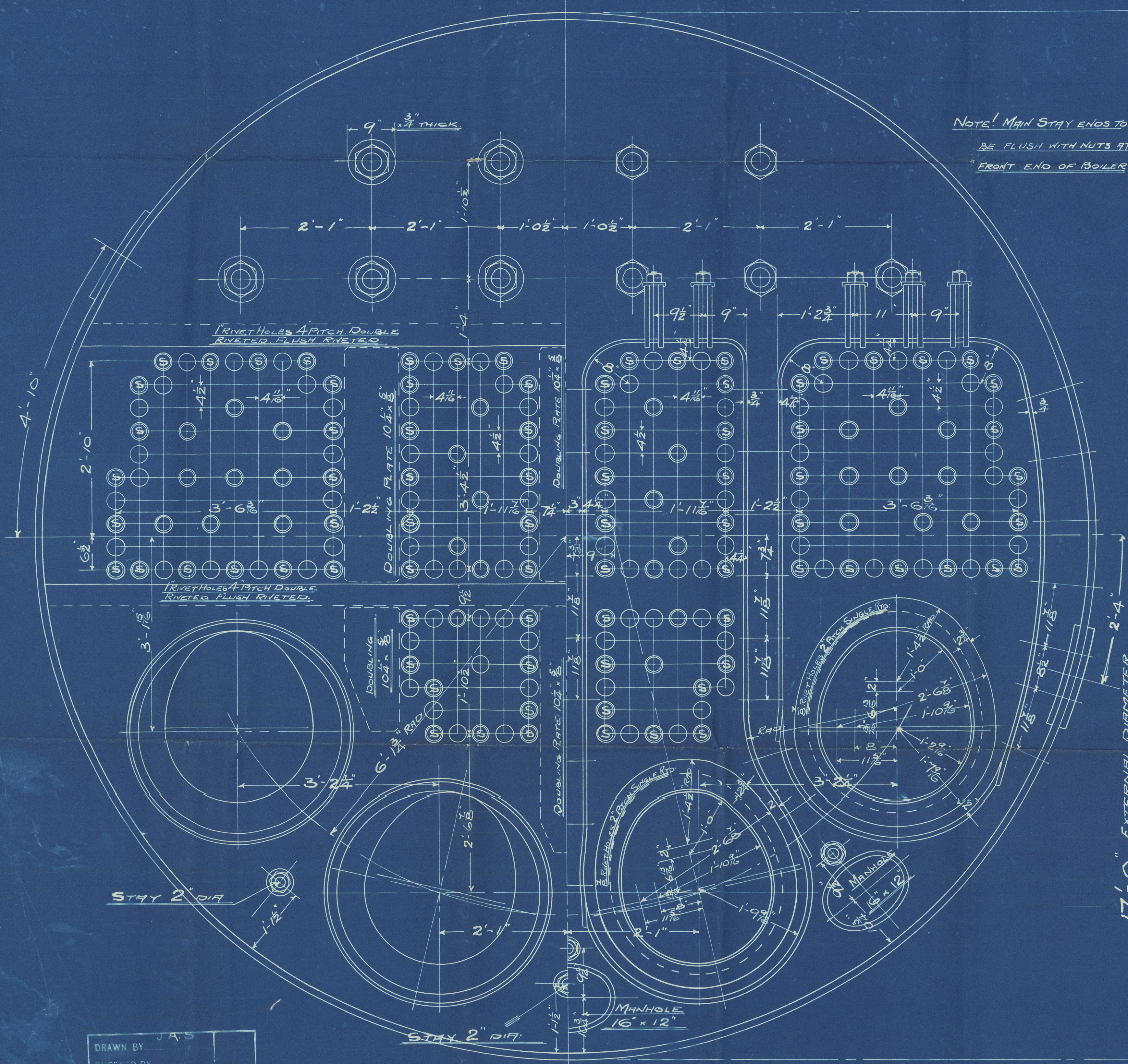
PLATE SECTION = 85.8 %
RIVET " " = 84.64 %

RIVET HOLES 1 1/2" DIA.

BUTT STRAPS { 1-SIDE 3/16"
OUTSIDE 1/16"

EVERY ALTERNATE RIVET TO BE LEFT OUT OF INSIDE ROW
FOR 3 CIRCUMFERENCE TOP OF BOILER AND ALL RIVETS
TO BE PUT IN 3 CIRCUMF. BOTTOM - AT BACK END OF BOILER

TO PASS LLOYD'S SURVEY.			
SHELL = 22.88 (21.2) 84.64	=	180.2	LBS PER SQ. IN.
WORKING PRESSURE =	180	"	"
TEST	=	360	"
HEATING SURFACE ON TUBES	2354	SQ. FEET	
" " OTHER PARTS	646	"	
TOTAL	3000	"	
EX. FRONT TUBE PLATE	2938	"	
EFFECTIVE AREA OF STAYS			
3 1/2" STAY TUBES 10 IN. 9 THREADS PER IN.	2.17	SQ. INCHES	
3 1/2" " 9 " " " "	1.64	"	
3 1/2" MAIN STAYS 6 " " " "	9.82	"	
2 " " 6 " " " "	2.51	"	
2 " SCREWED " 11 " " " "	2.79	"	
1 1/2 " " 11 " " " "	2.43	"	
1 1/2 " " 11 " " " "	2.1	"	
ALL PLATES, RIVETS & STAYS - STEEL -			
TUBES - WROUGHT IRON			
HOLES TO BE DRILLED IN PLACE AFTER BENDING.			
TENSILE STRENGTH OF SHELL PLATES BUTT STRAPS NOT LESS THAN 28 TONS			
" " MAIN STAYS	28	"	
" " GIRDER PLATES	28	"	



NOTE: MAIN STAY ENDS TO
BE FLUSH WITH NUTS AT
FRONT END OF BOILER

3 1/2" STAYS 3 1/2" SCREWS.

260 SMOKE TUBES 3 1/2" EXT. DIA. NO. 8 B.W.G. THICK.
80 STAY " 3 1/2" " " 3/8" MARKED S
32 " 3 1/2" " " 1/2" THICK
372 TUBES TOTAL

7'-5" OVER TUBE PLATES.

FIRE-BARS 5'-6"
GRATE AREA 74 sq
SAFETY VALVES

DRAWN BY JAS
CHECKED BY H.M.
TRACED BY
CHECKED BY 2537
TRACING No



CONTRACT 1850
CONTRACT 1 OFF

No. 1000
has been altered
in accordance with
order of the Board

W446-0000

RETAIN



© 2020

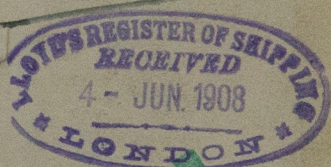
Lloyd's Register
Foundation

J. Priestman 400 No 125 vessel
H. E. M. E. C 1850

s/s. "Greenbatt"

No 2726
Lloyds Test
360 lbs
Arr. C. 15.10.08

~~led 23901.~~



RETAILED



© 2020

W446-0060

Lloyd's Register
Foundation