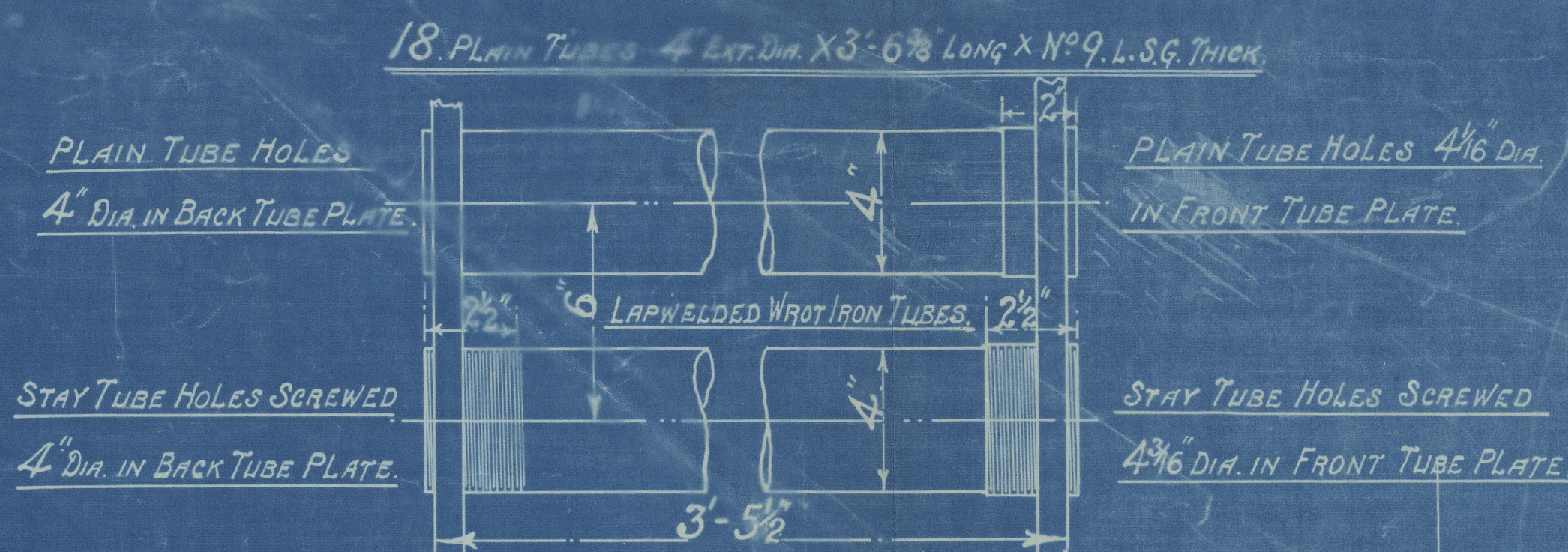
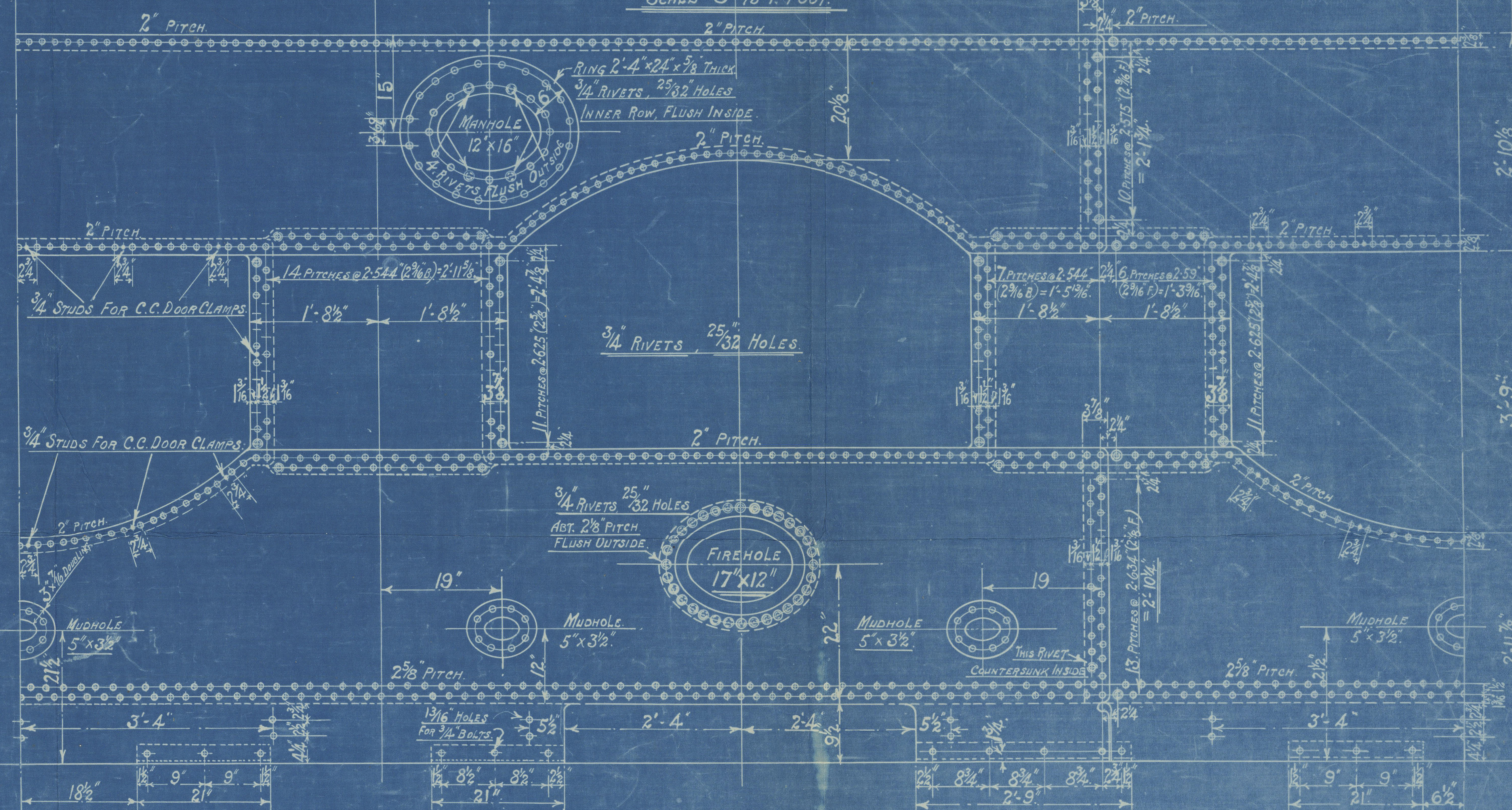


LOYDS		
PLATE	$\frac{2.575}{2.575} \times 100$	= 69.7%
RIVETS	$\frac{23 \times 4.7937 \times 2.31}{23 \times 2.575 \times 4.7937} \times 100$	= 68.3%
FRONT TUBE PLATE	$\frac{6-4}{6} \times 100$	= 31.25%
BACK TUBE PLATE	$\frac{6-4}{6} \times 100$	= 33.3%
SHELL	$\frac{(14-2) \times 23 \times 68.3}{2.9 \times 72}$	= 110. Lbs.
FRONT TUBE PLATE	$\frac{(26-2) \times 26 \times 31.25}{2.9 \times 57.5}$	= 116.9 Lbs.
BACK TUBE PLATE	$\frac{(26-2) \times 26 \times 33.3}{2.9 \times 57.5}$	= 124.5 Lbs.
FURNACE	$\frac{275 \times (16-1)}{30}$	= 137.5 Lbs.
OGEE RING	$\frac{140 \times (26-1) \times 112}{72 \times (72-60)}$	= 101.2 Lbs.
SHELL CROWN	$\frac{15 \times 26 \times (18-1)}{60}$	= 110. Lbs.



10. STAY TUBES 4" EXT. DIA. X 3'-6 3/8" LONG X 1/16" THICK.
SCREWED 9 THREADS PER INCH, CONTINUOUS THREAD.
EFFECTIVE SECTIONAL AREA AT BOTTOM OF THREAD = 3.072 sq. in.

SCALE 3" TO 1 FOOT.



HEATING SURFACE.	
TUBES	95 Sq. Ft.
PLATE	50 Sq. Ft.
TOTAL	145 Sq. Ft.
GRATE AREA	18.7 Sq. Ft.

MANHOLE & MUDHOLE DOORS TO HAVE STUDS
SCREWED THROUGH DOORS & FITTED WITH
NUTS INSIDE.

Similar to Drawing No. 13896 of 19.12.26 for
Boiler No. 9413, but with Top & Bottom Bolt Vertical
Studs at other side of Boiler.

COCHRAN 'POPULAR' BOILER No. 11454.

6'-0" DIA X 10'-9" HIGH X 145# H.S. X 100 LBS. W.P.

SCALE :- 1 INCH TO 1 FOOT.

SIEMENS MARTIN MILD STEEL PLATES.

TENSILE TESTS.

PLATES NOT EXPOSED TO FLAME OR FLANGED... 28 TO 32 TONS.

PLATES EXPOSED TO FLAME OR FLANGED & RIVETS... 26 TO 30 TONS.

DRAWING No. 11454

STANDARD PLAN OF FURNACE.
SURVEY: LLOYDS.

COCHRAN & CO ANNAN L.
ENGINEERS & BOILERMAKERS
ANNAN SCOTLAND.

PLAN OF SHELL CROWN.

COCHRAN & CO., ANNAN, LD.

Boiler No. 11454

Drawing No. 16178

WP-100 lb

GLASGOW REPORT No. 51785

S/S GREEN BAT

REPAIR

REPAIR

W446-0056



© 2020

Lloyd's Register
Foundation