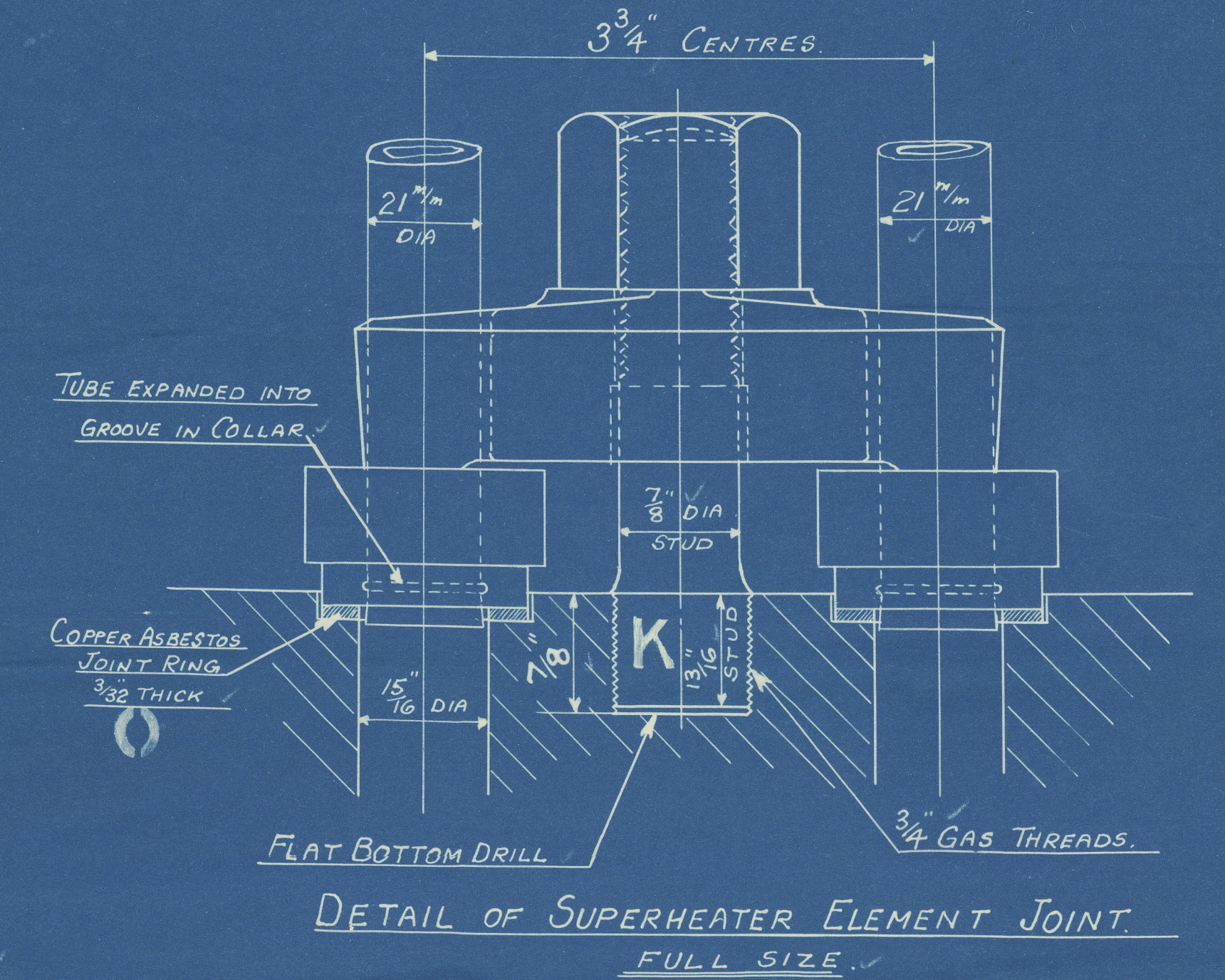
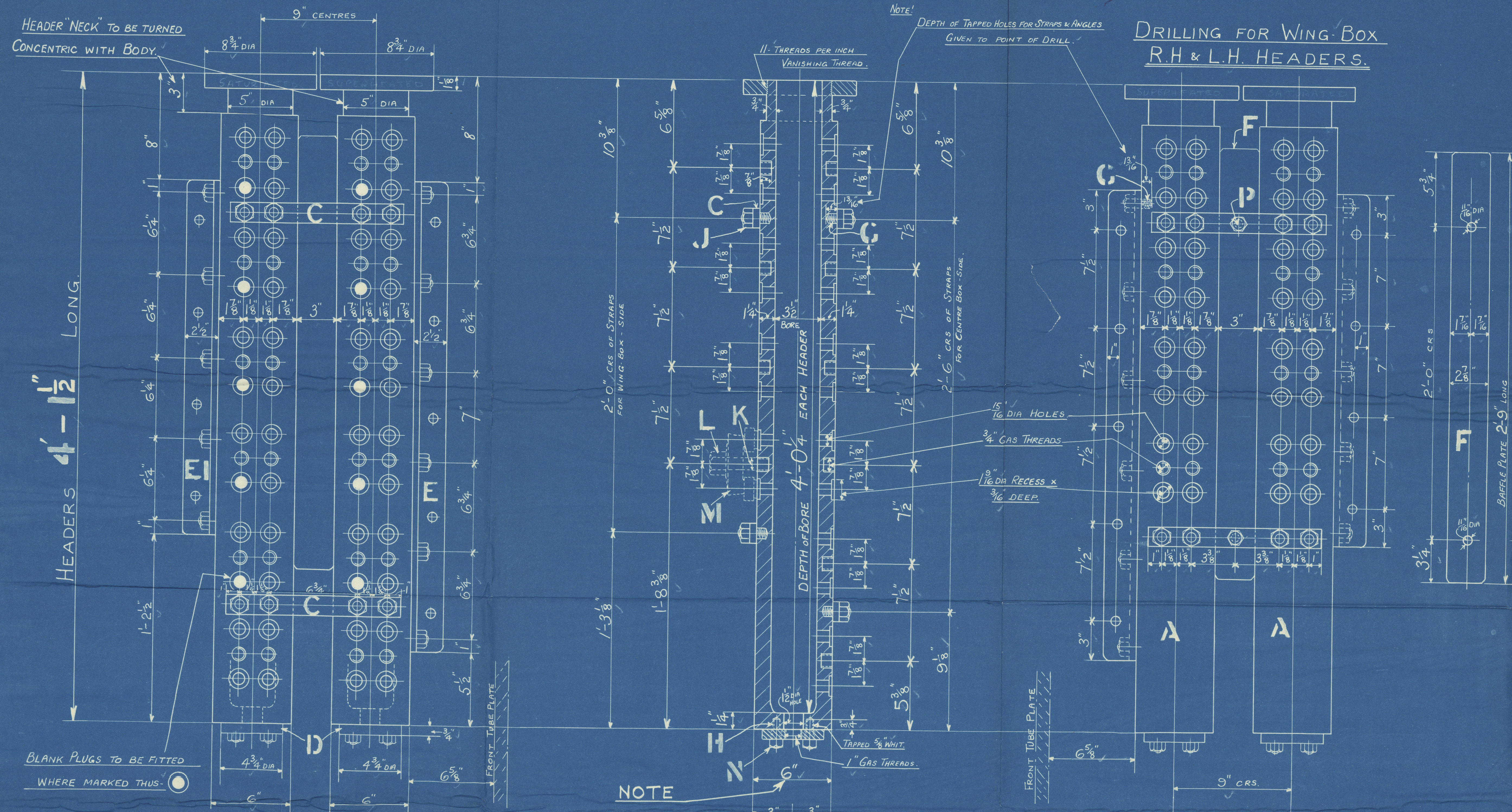


DRILLING FOR CENTRE BOX.  
R.H & L.H. HEADERS.

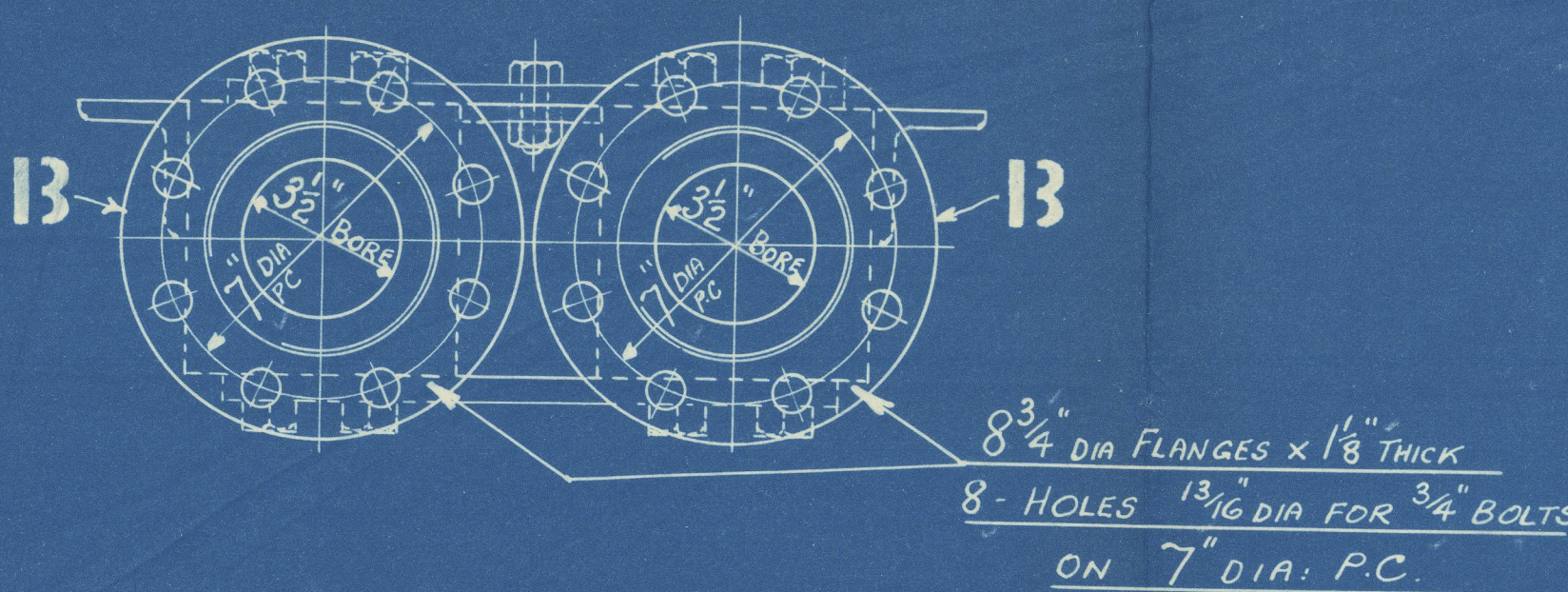
# LEFT HAND HEADERS DRAWN



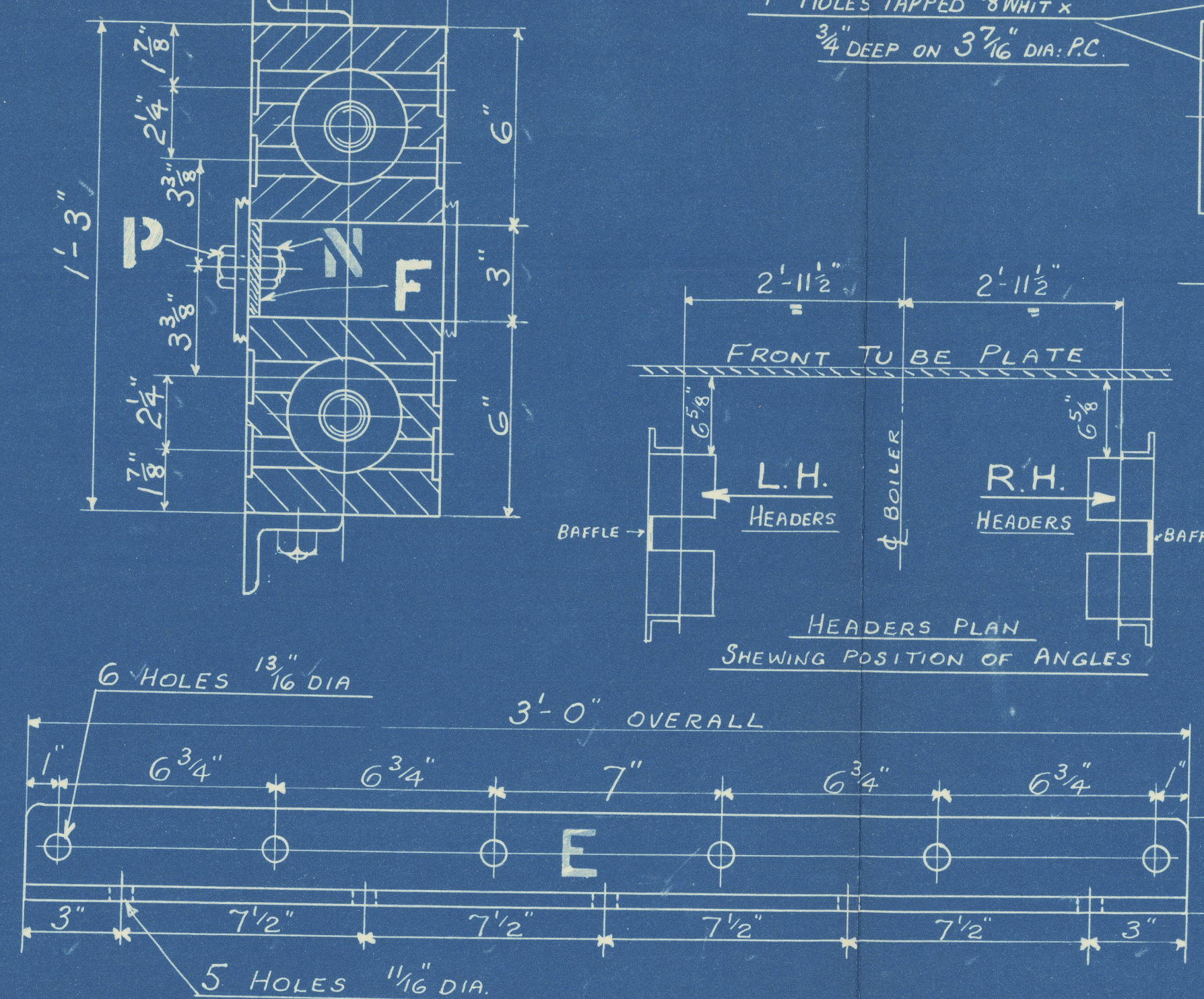
TO PASS LLOYDS SURVEY  
WORKING PRESSURE 180 LBS PER SQ. INCH  
TEST 540

LIST OF MATERIAL FOR ONE BOILER.

MARK	DESCRIPTION	NO OF	MATERIAL	REMARKS
A	HEADERS	4	STEEL FORGINGS	1 PR RH & 1 PR L.H
B	" FLANGES	4	M.S.	8 3/4\"/>



NOTE



NOTE!  
EACH PAIR OF HEADERS TO HAVE "HAND" PAINTED ON -  
(WHITE PAINT) - TO DENOTE POSITION IN SMOKE BOX.

THE SUPERHEATER CO. LTD  
BUSH HOUSE LONDON W.C.2

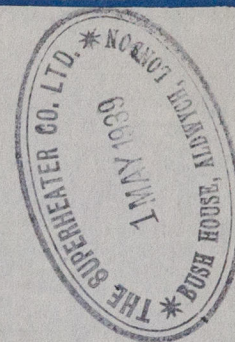
**TITLE HEADERS**

ORDER NOS REF CKD DRAWING NOS  
12724 21/2/39 MA 9250

TURNBULL, SCOTT & CO  
**S.S. "STONEGATE"**

SCALE  
3" = ONE FOOT  
25/4/39





s.s. Stonegate

SUNDERLAND RPT. NO. 32672

Superheater Headers

RETAIN



© 2020

Lloyd's Register  
Foundation

W443-0250